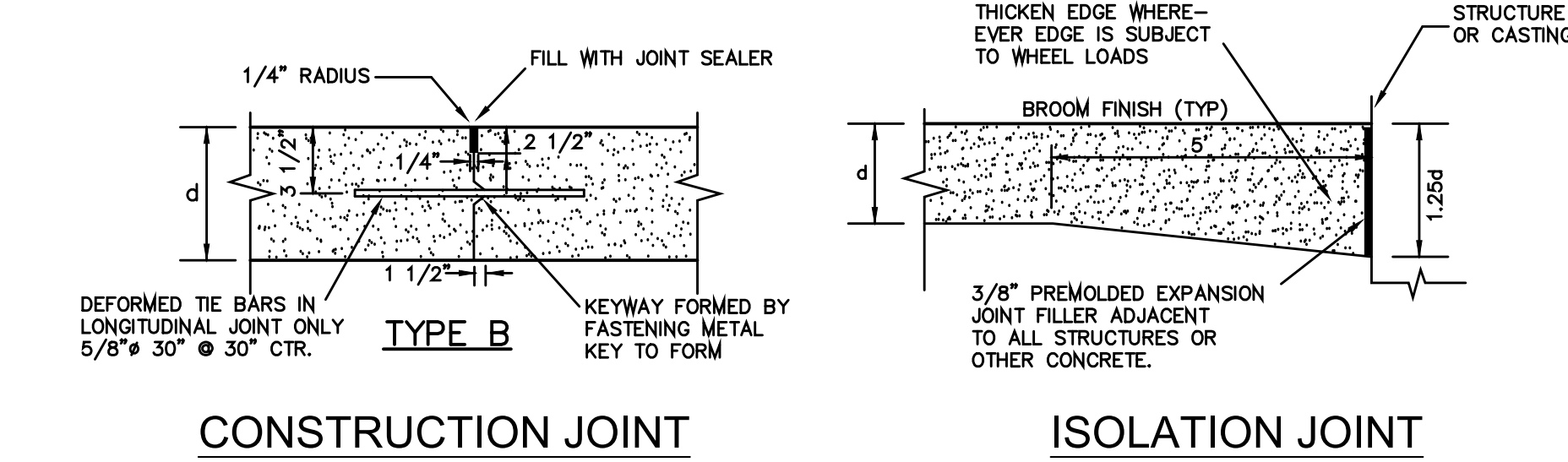


TYPE AA EXPANSION JOINT

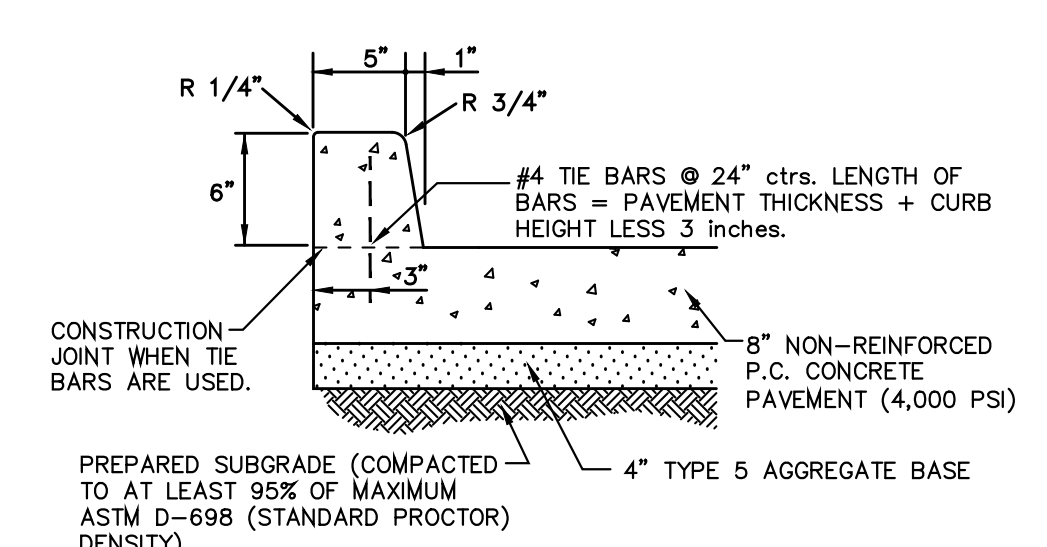
TYPE C CONTRACTION JOINT

NOTES:
 1. CONSTRUCTION JOINTS ARE REQUIRED BETWEEN ALL POURS SEPARATED BY MORE THAN 30 MINUTES TIME.
 2. PLACE LONGITUDINAL CONSTRUCTION JOINT AT CENTERLINE OF ROADWAYS WHEN PAVEMENT IS WIDER THAN 12'.
 3. MAXIMUM OF SIXTEEN FOOT (16') SPACING BETWEEN CONTROL JOINTS FOR 6" THICK PAVEMENT.
 4. FILL JOINTS TO WITHIN 1/8" OF SURFACE WITH JOINT SEALER.
 5. JOINTS TO BE SEALED WITH LimestonE COLORED SEALANT.
 6. WHEN A JOINT FALLS WITHIN 5' OF A MANHOLE, LIGHT POLE BASE, OR OTHER STRUCTURE, SHORTEN ONE OR MORE PANELS ON EITHER SIDE OF STRUCTURE TO ALLOW CONTROL JOINTS TO FALL AT STRUCTURE.
 7. CONTRACTOR MAY SUBMIT ALTERNATE JOINTING PLAN TO ENGINEER FOR REVIEW.

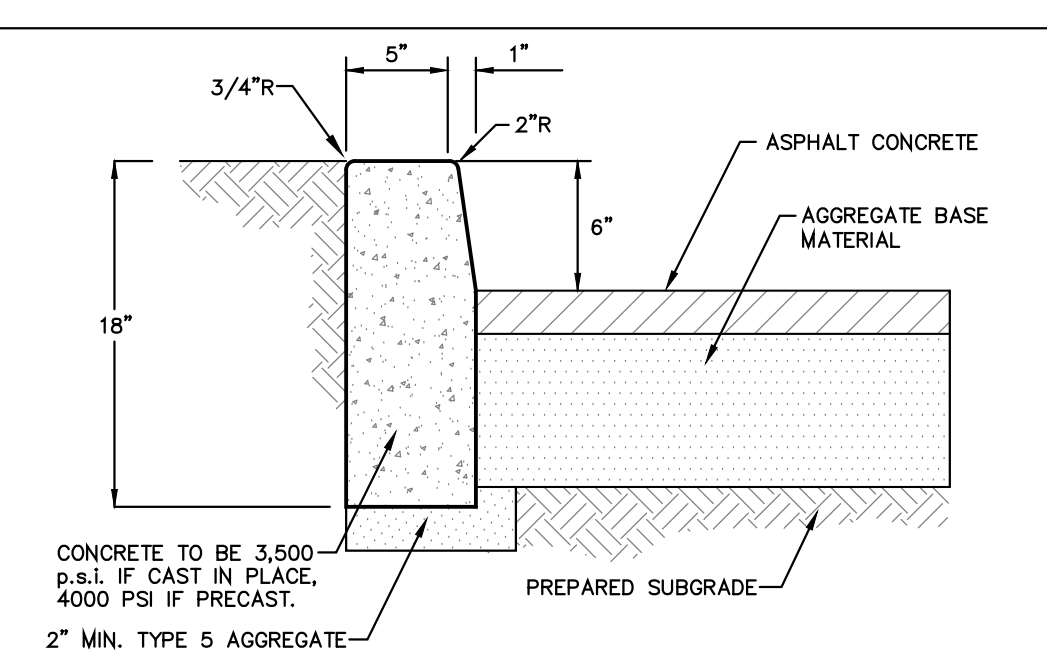


CONSTRUCTION JOINT (TYPE B)

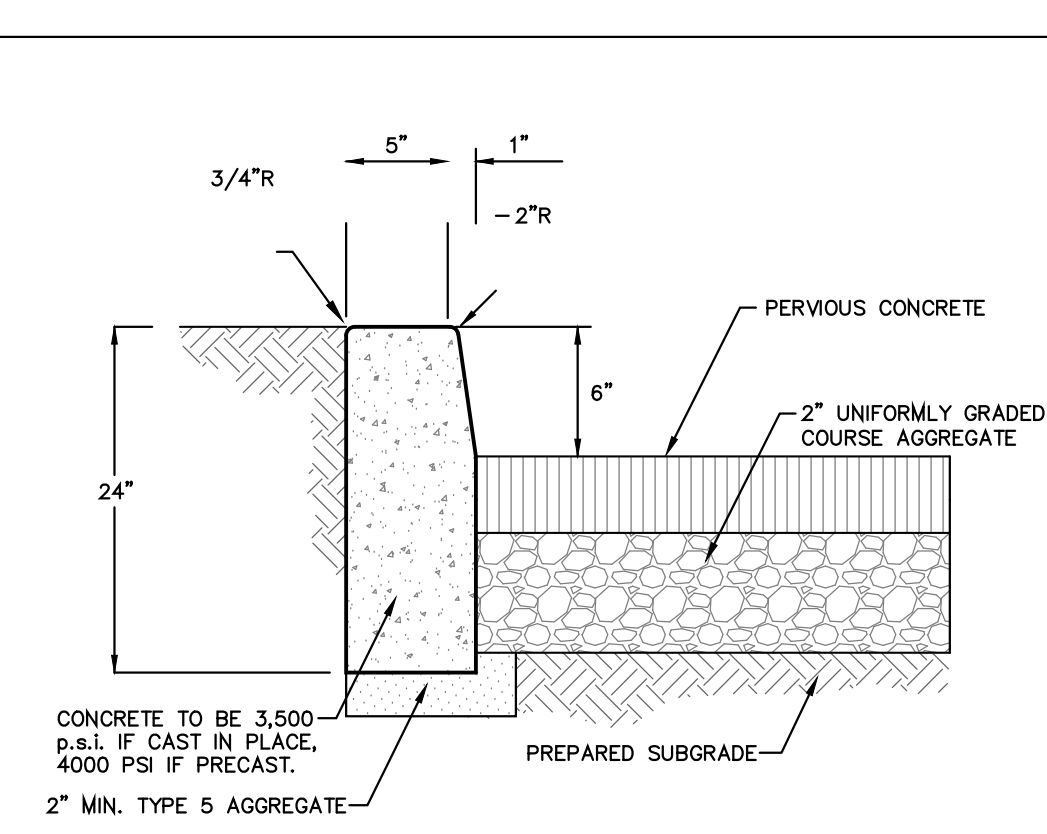
ISOLATION JOINT



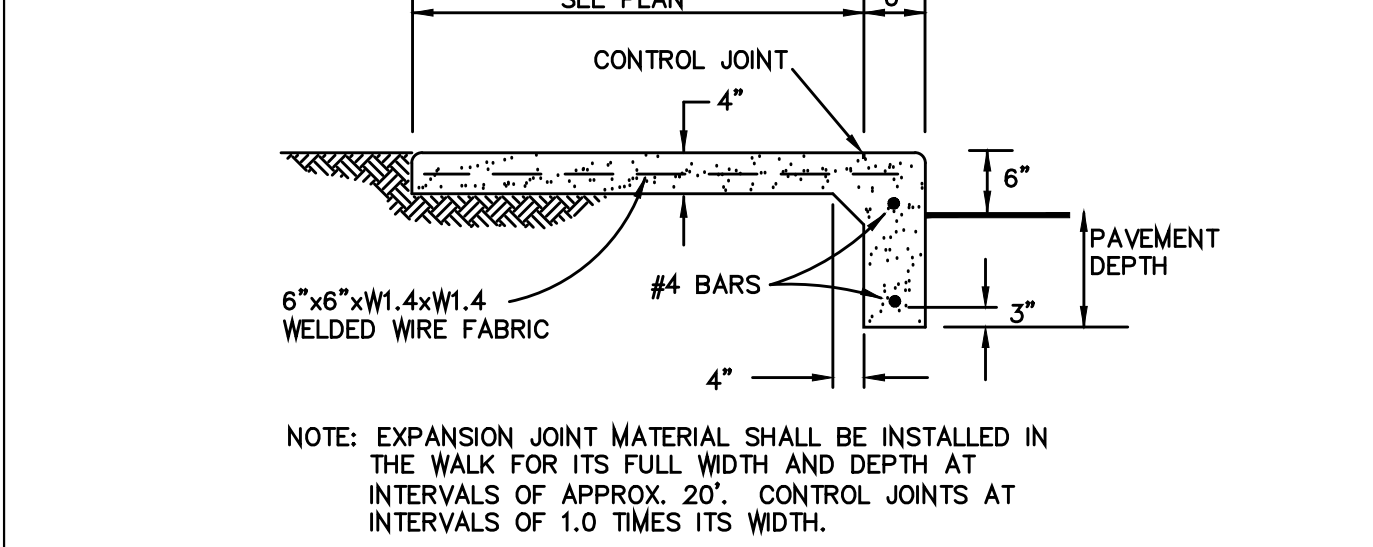
BARRIER CURBING DETAIL
(N.T.S.)



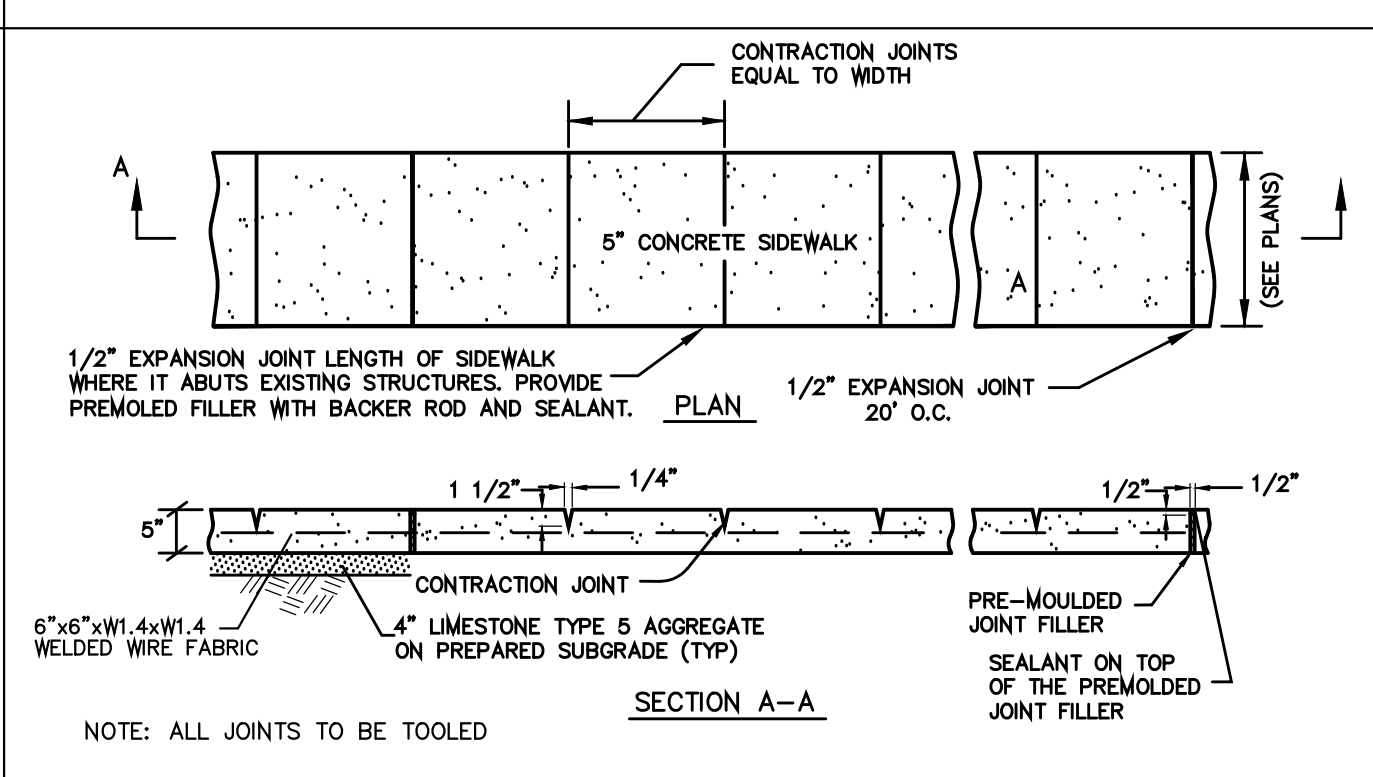
CONCRETE VERTICAL CURB
(NOT FOR USE IN CITY RIGHT-OF-WAY)



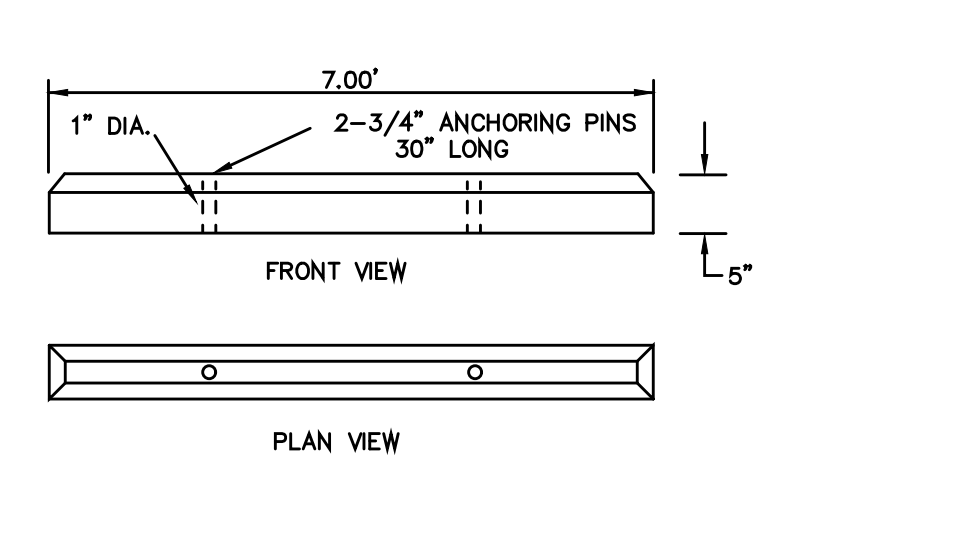
EXTENDED CONCRETE VERTICAL CURB
(ADJACENT TO PERVIOUS CONCRETE)



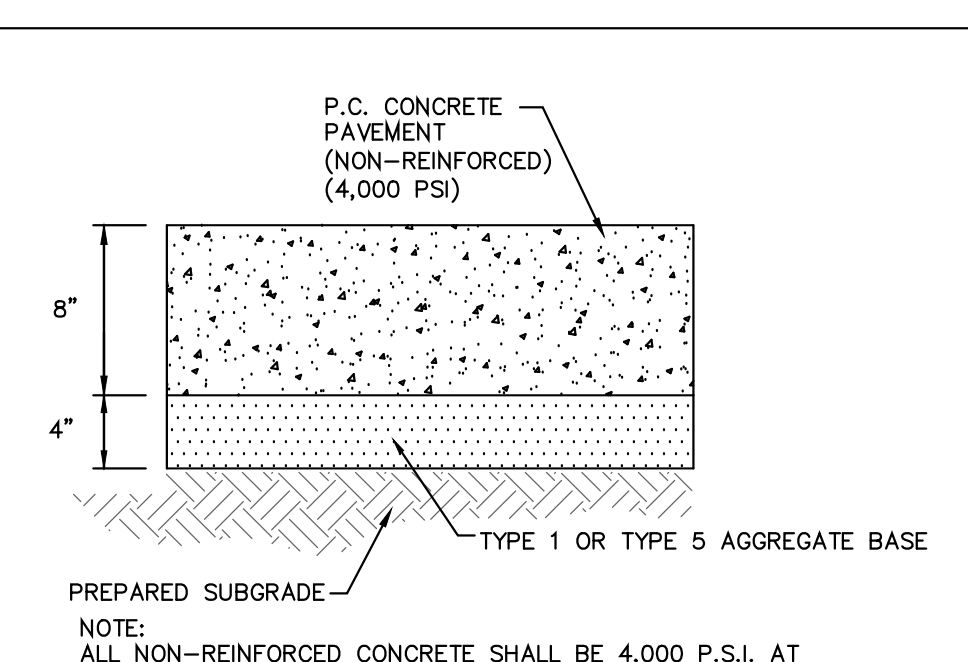
INTEGRAL SIDEWALK/CURB DETAIL



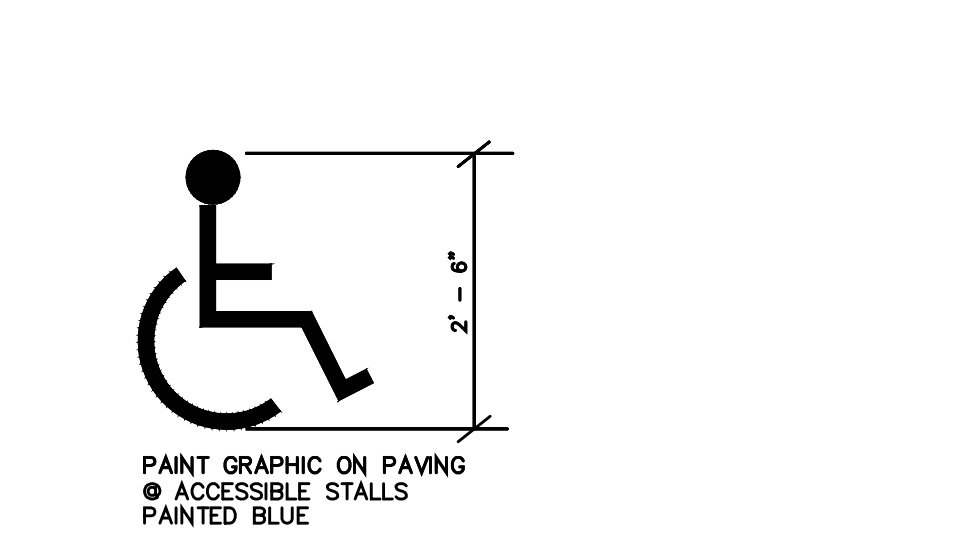
DETAIL OF CONCRETE SIDEWALK
(NOT FOR USE IN CITY RIGHT-OF-WAY)



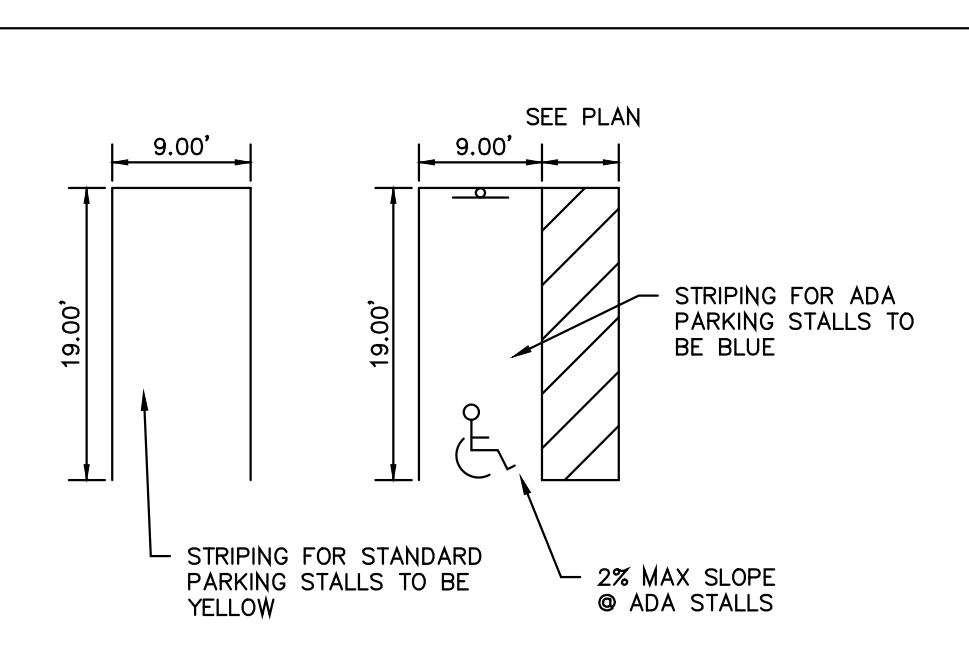
PRE-CAST CURB STOP
(N.T.S.)



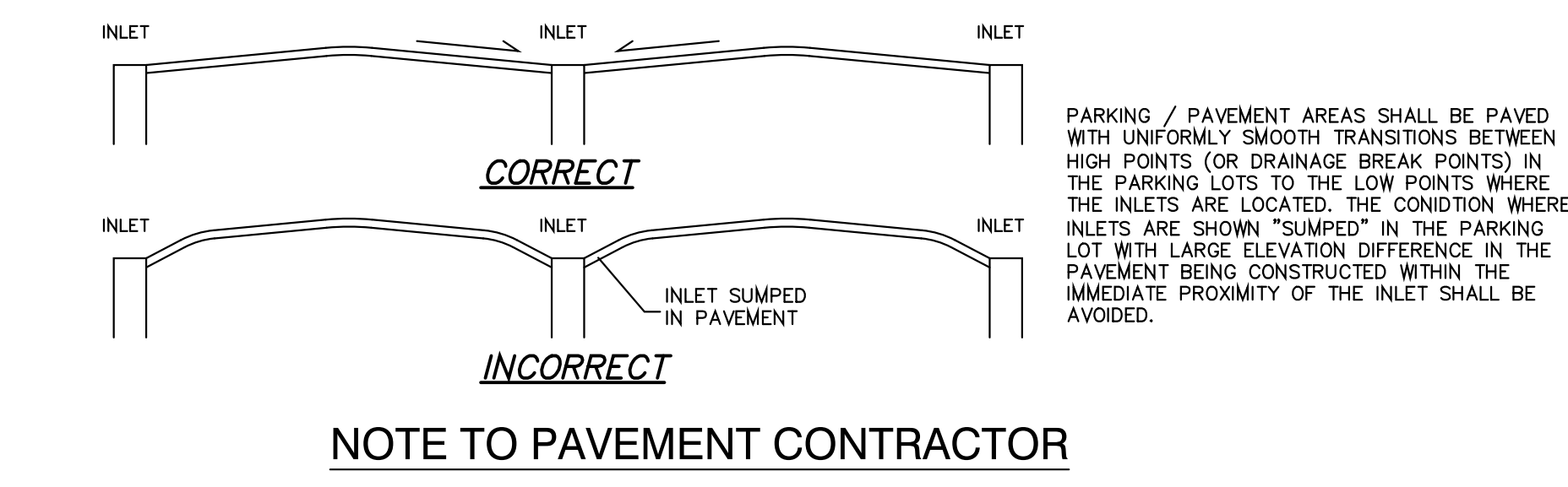
CONCRETE PAVEMENT DETAIL
NOT TO SCALE



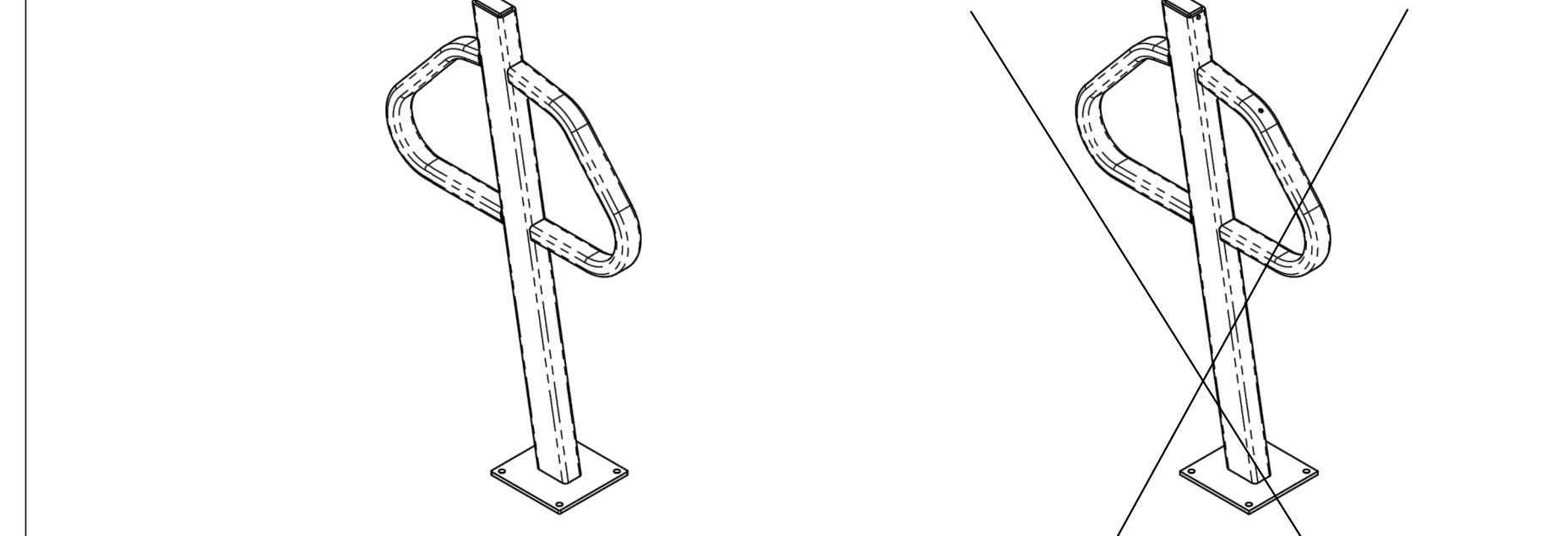
ACCESSIBLE SIGN
(N.T.S.)



TYPICAL PARKING STALLS
(N.T.S.)



NOTE TO PAVEMENT CONTRACTOR



FLANGE MOUNT PAINTED

FLANGE MOUNT GALVANIZED

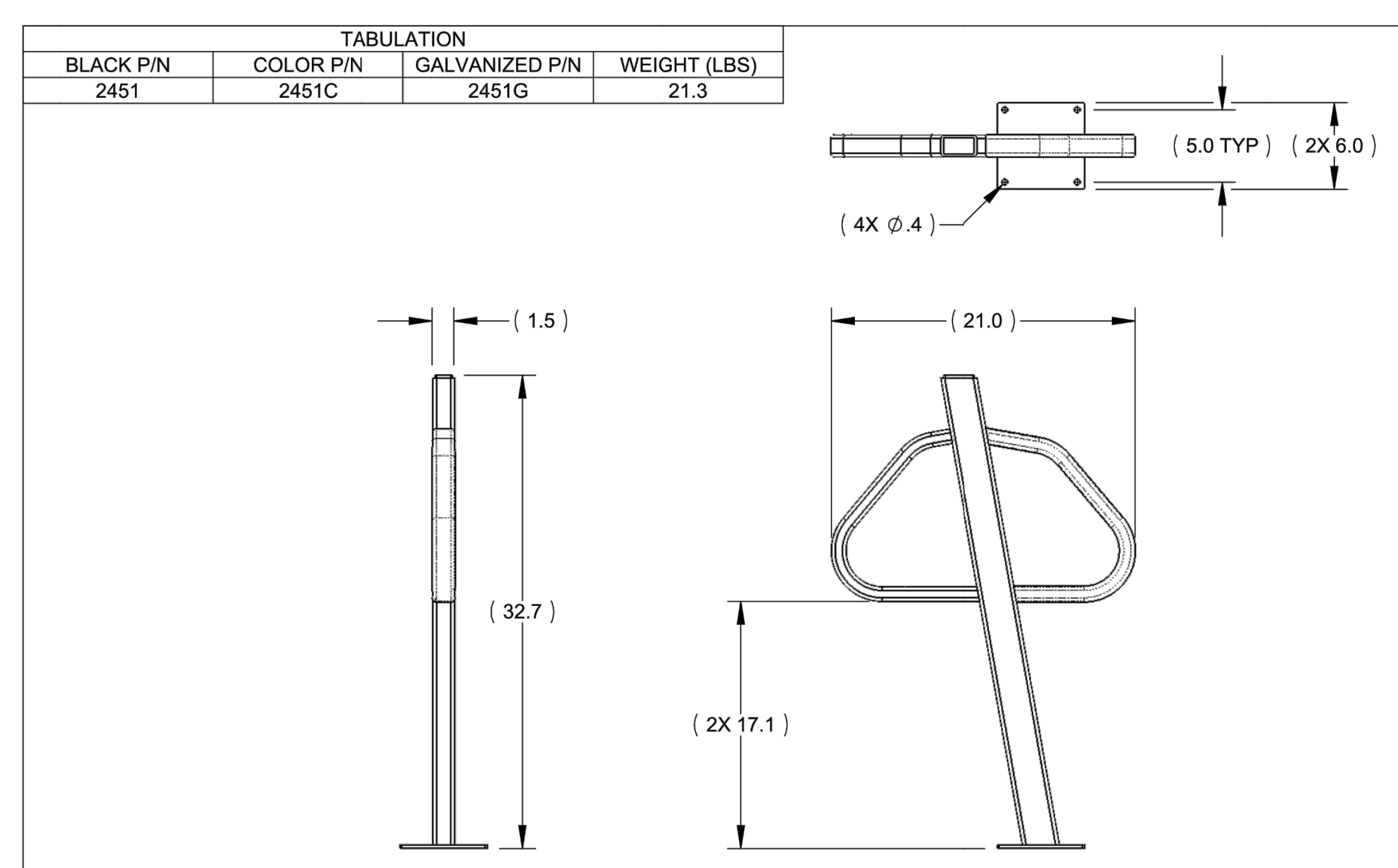
NOTE:
 • BIKE RACK TO BE POWDERCOATED (BLACK)
 • CONCRETE TO BE PREDRILLED.
 • INSTALL BIKE RACK PER MANUFACTURER'S INSTALLATION INSTRUCTIONS.

NOTES:
 1. DO NOT SCALE DRAWING.
 2. INSTALLATION TO BE COMPLETED IN ACCORDANCE WITH MANUFACTURER'S SPECIFICATIONS.
 3. WEIGHT IS RACK ONLY, NOT TO BE CONSIDERED AS SHIPPING WEIGHT.
 4. FINISHING OPTIONS INCLUDE SUPER DURABLE POLYESTER POWDERCOAT AND HOT DIP GALVANIZING.
 5. SEE WEBSITE OR CATALOG FOR POLYESTER POWDERCOAT COLOR OPTIONS.

SARIS CYCLING GROUP
 5253 VERONA RD., MADISON WI, 53711
 1-800-783-7257 / 1-608-274-1702
 WWW.SARISPARKING.COM

THE INFORMATION CONTAINED IN THIS DRAWING IS THE SOLE PROPERTY OF SARIS CYCLING GROUP. ANY REPRODUCTION IN PART OR WHOLE WITHOUT THE WRITTEN PERMISSION OF SARIS CYCLING GROUP IS PROHIBITED.

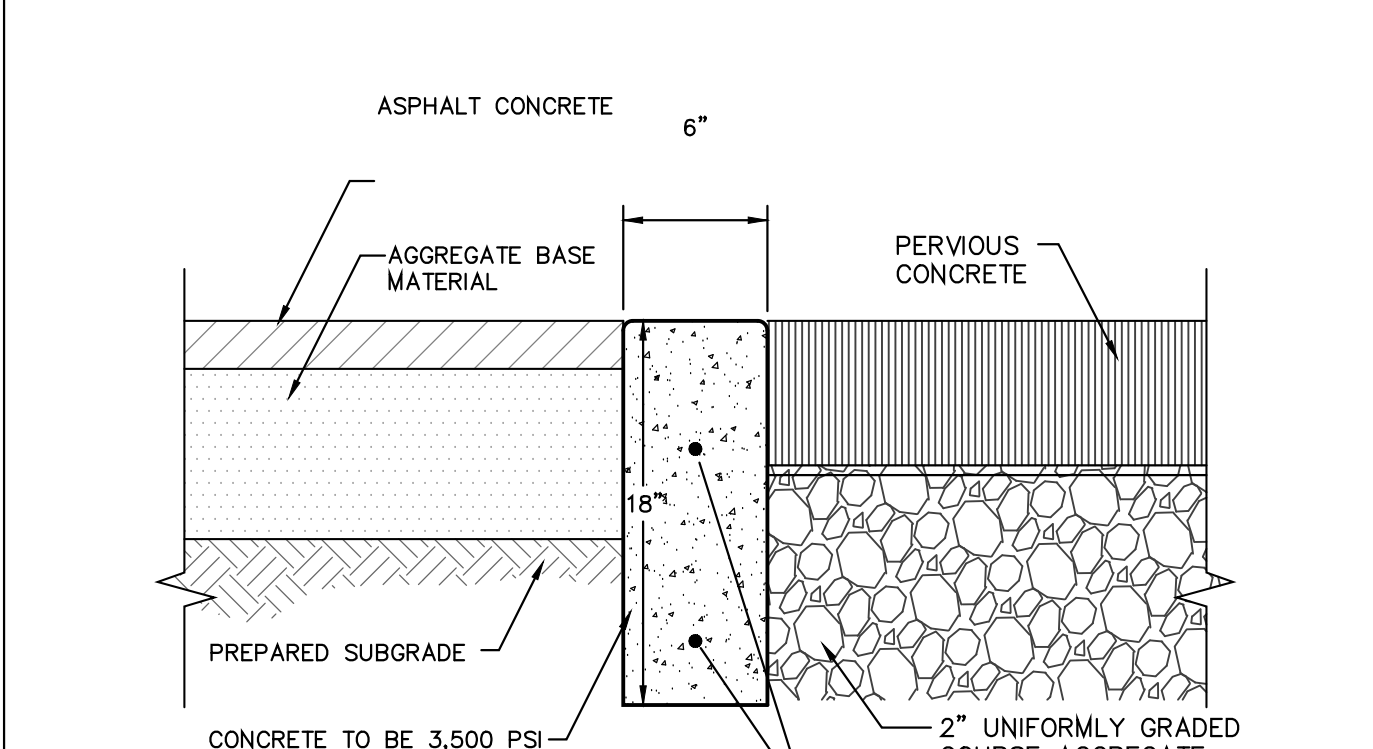
TITLE: **POST AND RING, 2450 SERIES, FM**



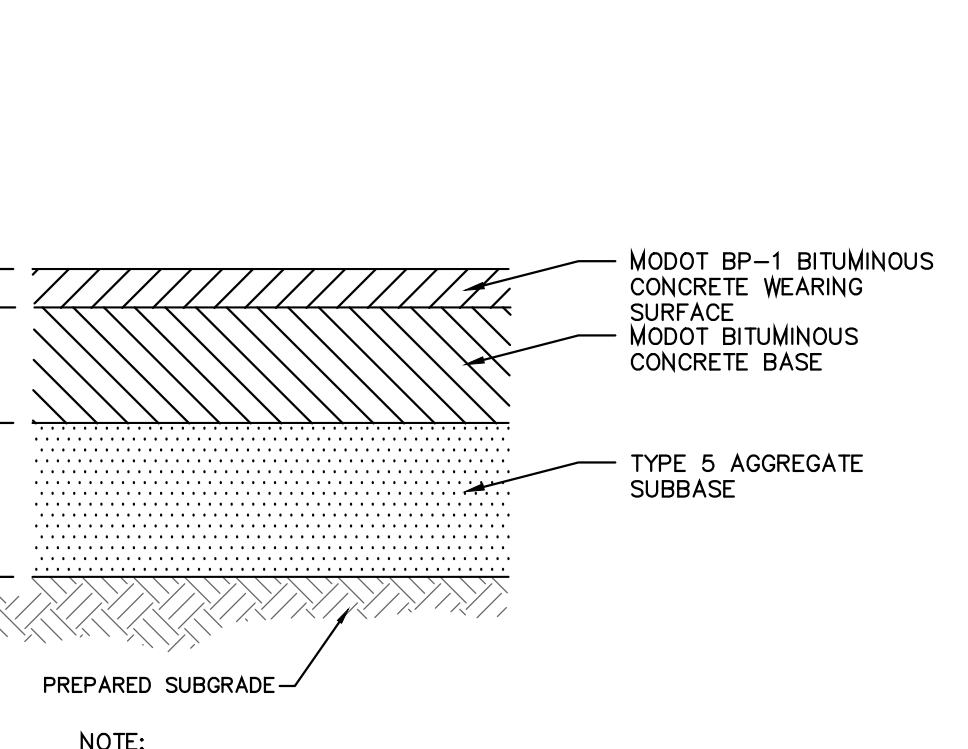
SARIS CYCLING GROUP
 5253 VERONA RD., MADISON WI, 53711
 1-800-783-7257 / 1-608-274-1702
 WWW.SARISPARKING.COM

THE INFORMATION CONTAINED IN THIS DRAWING IS THE SOLE PROPERTY OF SARIS CYCLING GROUP. ANY REPRODUCTION IN PART OR WHOLE WITHOUT THE WRITTEN PERMISSION OF SARIS CYCLING GROUP IS PROHIBITED.

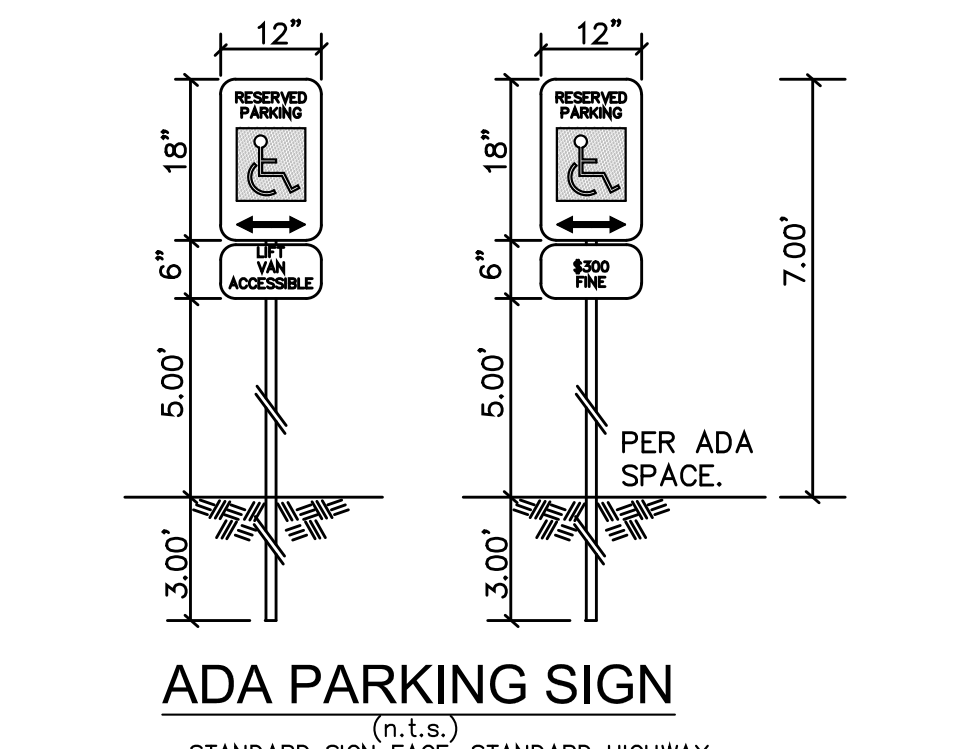
TITLE: **POST AND RING, 2450 SERIES, FM**



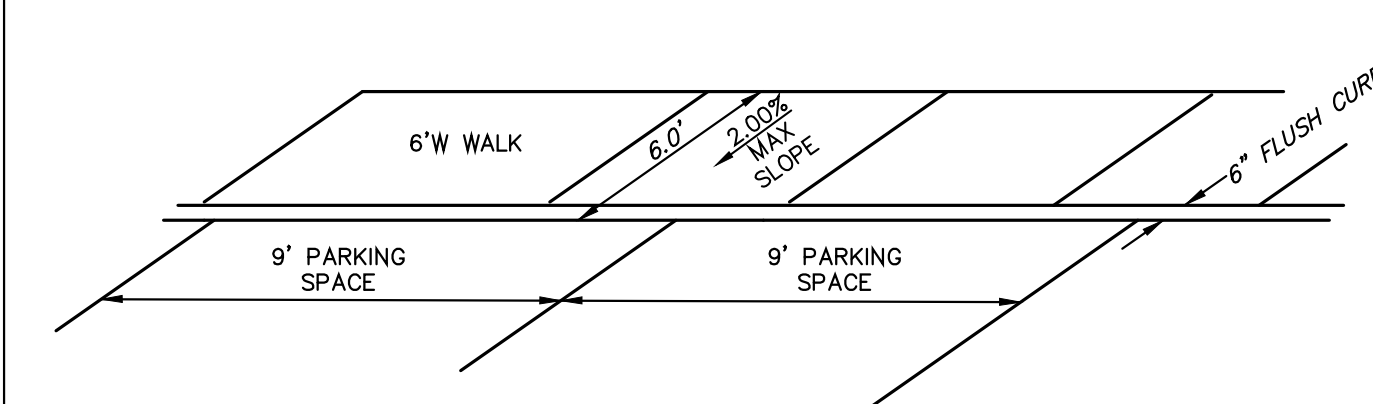
CONCRETE BAND
(N.T.S.)



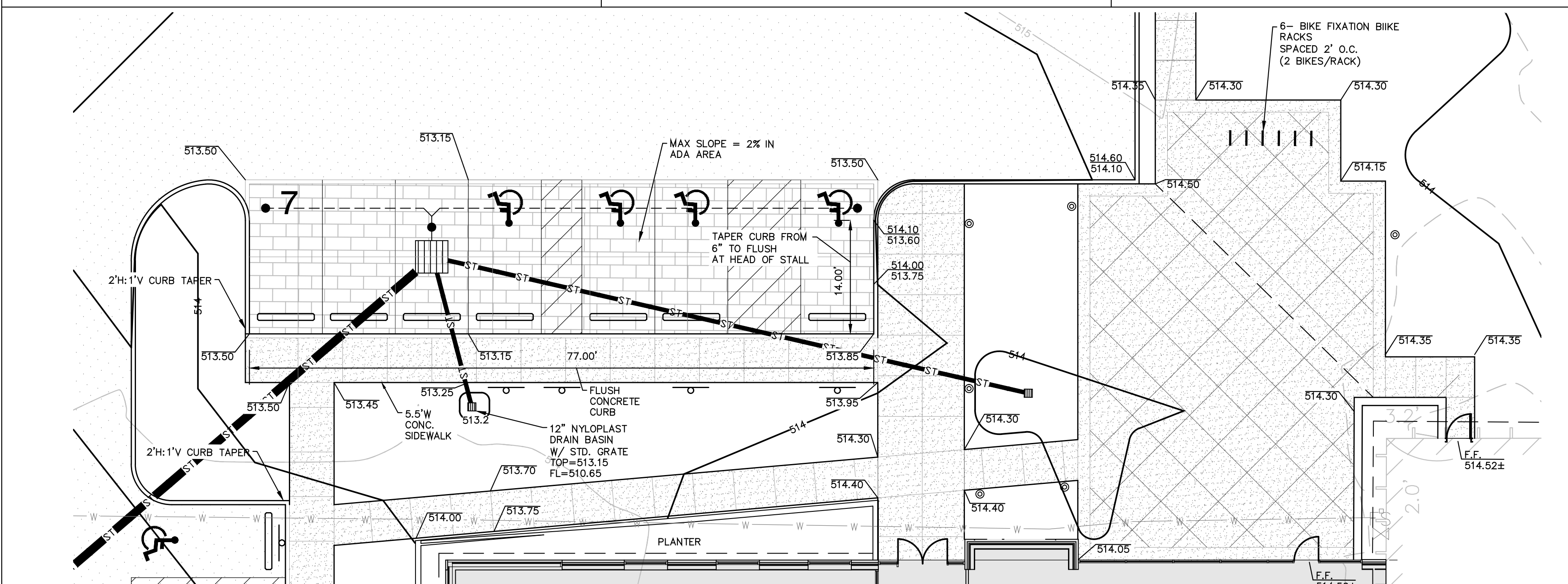
ASPHALT PAVEMENT DETAIL
NOT TO SCALE



ADA PARKING SIGN
(N.T.S.)



FLUSH CURB DETAIL
(NOT FOR USE IN ST. LOUIS COUNTY RIGHT-OF-WAY)



ADA AREA DETAIL
SCALE: 1"=10'

M+H ARCHITECTS

ARCHITECT:
 Mitchell and Hugelbeck Architects, Inc.
 D.B.A. M+H Architects
 2150 Schuetz Road, Suite 200
 St. Louis, Missouri 63146
 314-878-3500
 www.mha.us.com
 Corporate License No.: 000614

CONSULTANTS:

Civil:
 Civil Engineering Design Consultants, Inc.
 10820 Sunset Office Drive, Suite 200
 St. Louis, MO 63127
 314-729-1400
 Corporate License No.: 2003004674

Structural:
 SSC Engineering, Inc.
 18207 Edison Ave.
 St. Louis, MO 63005
 636-530-7770
 Corporate License No.: 001244

MEP:
 (Design - Build)

MSA

OFFICE ADDITION & RENOVATIONS FOR:
 1012 E WABASH ST
 OFALLON, MO 63366

PAUL K. BOYER, P.E. E-28258
 CIVIL ENGINEER
 CEDC LICENSE NO.: 2003004674

DESCRIPTION:

PROGRESS SET 8-31-18
 PERMIT SET 10-5-18
 CITY SUBMITTAL 10-30-18
 CITY RESUBMITTAL 11-27-18

Issue Date: 10-5-18
 Job Number: 1823
 Drawn By: PKB
 Checked By: PKB
 Drawing Title:

Site Details

C8