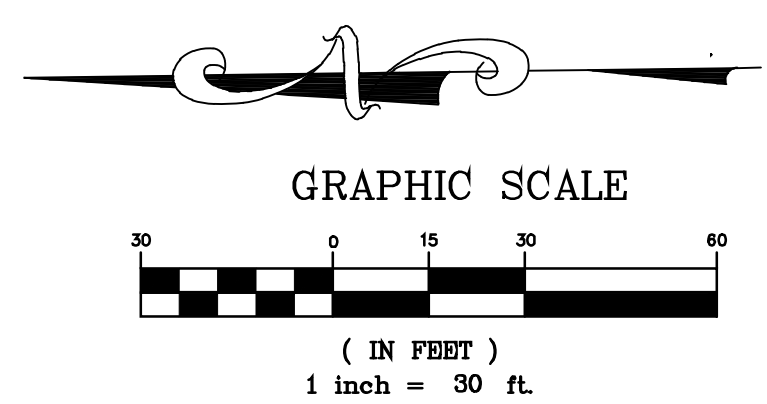


N/F
WILLIAM T. DAVIS REVOCABLE TRUST
PARCEL ID #
2-0056-S027-00-0009.0100000
DEED BOOK 5085 PAGE 1393

N/F
4G FACILITY LLC
PARCEL ID #
2-0056-S203-00-0001.1000000
DEED BOOK 6881 PAGE 1369

REMOVAL LEGEND

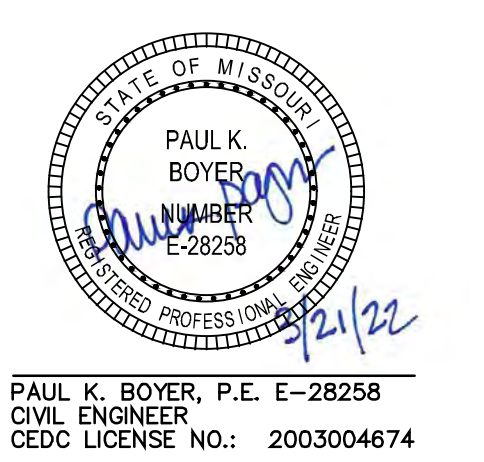
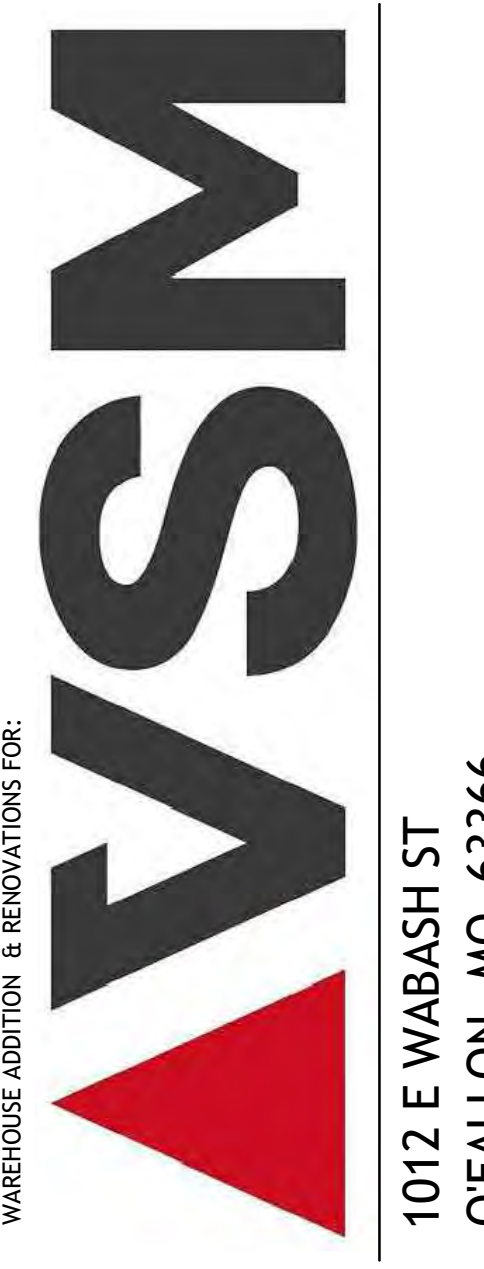


ARCHITECT:
Mitchell and Hugelback Architects, Inc.
D.B.A. M+H Architects
2150 Schuetz Road, Suite 200
St. Louis, Missouri 63146
314-878-3500
www.mh.us.com
Corporate License No.: 000614

CONSULTANTS:
Civil:
Civil Engineering Design Consultants, Inc.
10820 Sunset Office Drive, Suite 200
St. Louis, MO 63127
314-729-1400
Corporate License No. 2003004674

Structural:
SSC Engineering, Inc.
18207 Edison Ave.
St. Louis, MO 63005
636-530-7770
Corporate License No.: 001244

MEP:
(Design - Build)



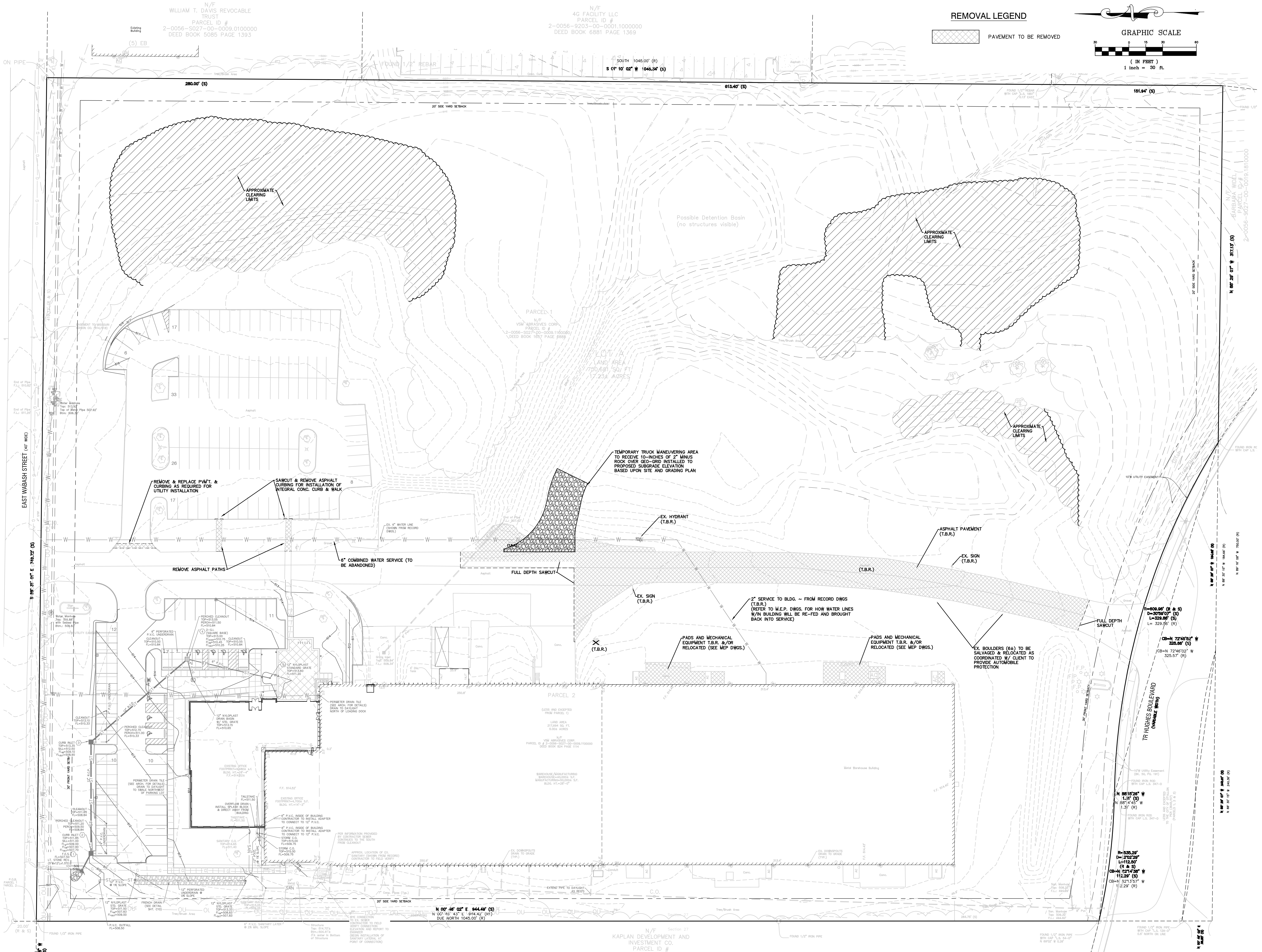
PAUL K. BOYER, P.E. E-28258
CIVIL ENGINEER
CEDC LICENSE NO.: 2003004674

DESCRIPTION:
Construction Site Plan Submittal
01/14/22 Permit / Bid Set
02/24/22 City comments
03/21/22 City comments

Issue Date: 01/14/22
Job Number: 1981.1
Drawn By: PKB
Checked By: PKB
Drawing Title:

Existing Conditions & Facilities Removal Plan

C4



N/F Section 27
KAPLAN DEVELOPMENT AND INVESTMENT CO.
PARCEL ID #
2-0568-S028-00-0006.6100000