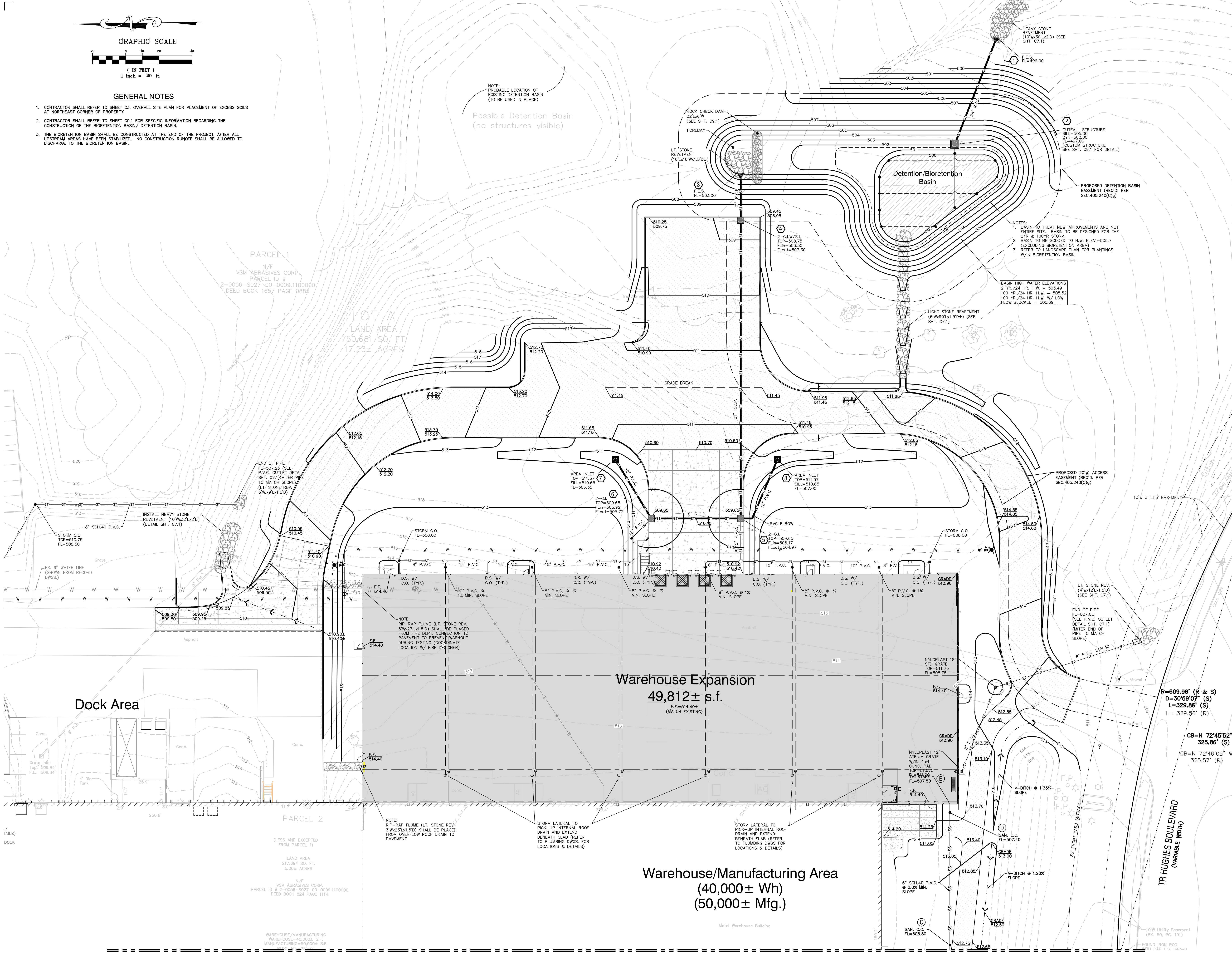


GENERAL NOTES

- CONTRACTOR SHALL REFER TO SHEET C3, OVERALL SITE PLAN FOR PLACEMENT OF EXCESS SOILS AT NORTHEAST CORNER OF PROPERTY.
- CONTRACTOR SHALL REFER TO SHEET C9.1 FOR SPECIFIC INFORMATION REGARDING THE CONSTRUCTION OF THE BIORETENTION BASIN/ DETENTION BASIN.
- THE BIORETENTION BASIN SHALL BE CONSTRUCTED AT THE END OF THE PROJECT, AFTER ALL UPSTREAM AREAS HAVE BEEN STABILIZED. NO CONSTRUCTION RUNOFF SHALL BE ALLOWED TO DISCHARGE TO THE BIORETENTION BASIN.

NOTE: PROBABLE LOCATION OF EXISTING DETENTION BASIN (TO BE USED IN PLACE)

Possible Detention Basin (no structures visible)

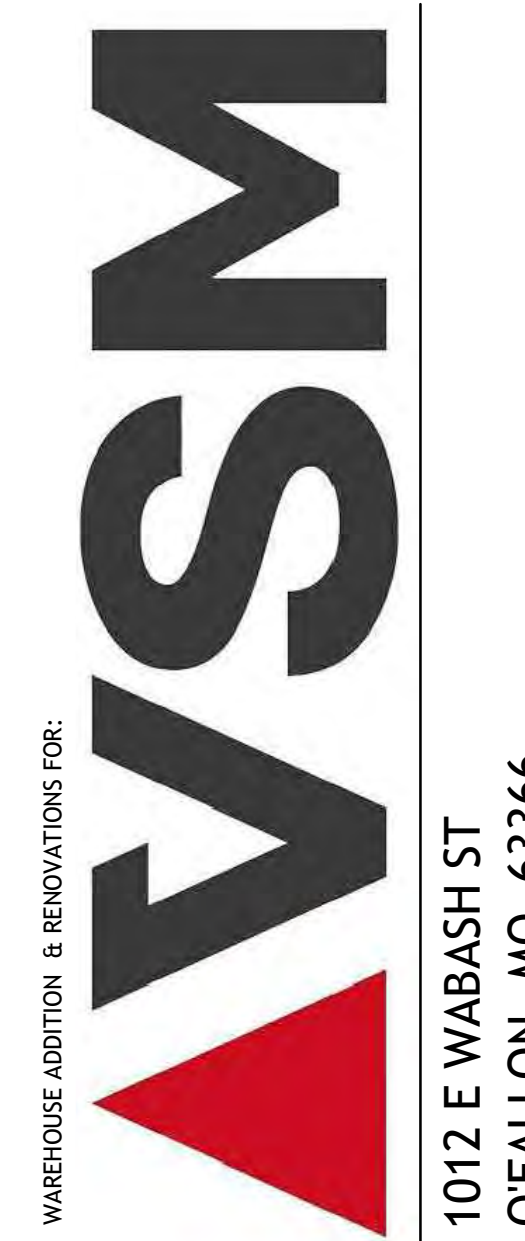


ARCHITECT:
 Mitchell and Hugelback Architects, Inc.
 D.B.A. M+H Architects
 2150 Schuetz Road, Suite 200
 St. Louis, Missouri 63146
 314-878-3500
 www.mha.us.com
 Corporate License No.: 000614

CONSULTANTS:
Civil:
 Civil Engineering Design Consultants, Inc.
 10820 Sunset Office Drive, Suite 200
 St. Louis, MO 63127
 314-729-1400
 Corporate License No. 2003004674

Structural:
 SSC Engineering, Inc.
 18207 Edison Ave.
 St. Louis, MO 63005
 636-530-7770
 Corporate License No.: 001244

MEP:
 (Design - Build)



WAREHOUSE ADDITION & RENOVATIONS FOR:
W.S.M.
 1012 E WABASH ST
 OFALLON, MO 63366



PAUL K. BOYER, P.E. E-28258
 CIVIL ENGINEER
 CEDC LICENSE NO.: 2003004674

DESCRIPTION:

01/05/22	Construction Site Plan Submittal
01/14/22	Permit / Bid Set
02/24/22	City comments
03/21/22	City comments

Issue Date:	01/14/22
Job Number:	1981.1
Drawn By:	PKB
Checked By:	PKB
Drawing Title:	

Site and Grading Plan

C5.0

See Sheet C5.1 for Continuation