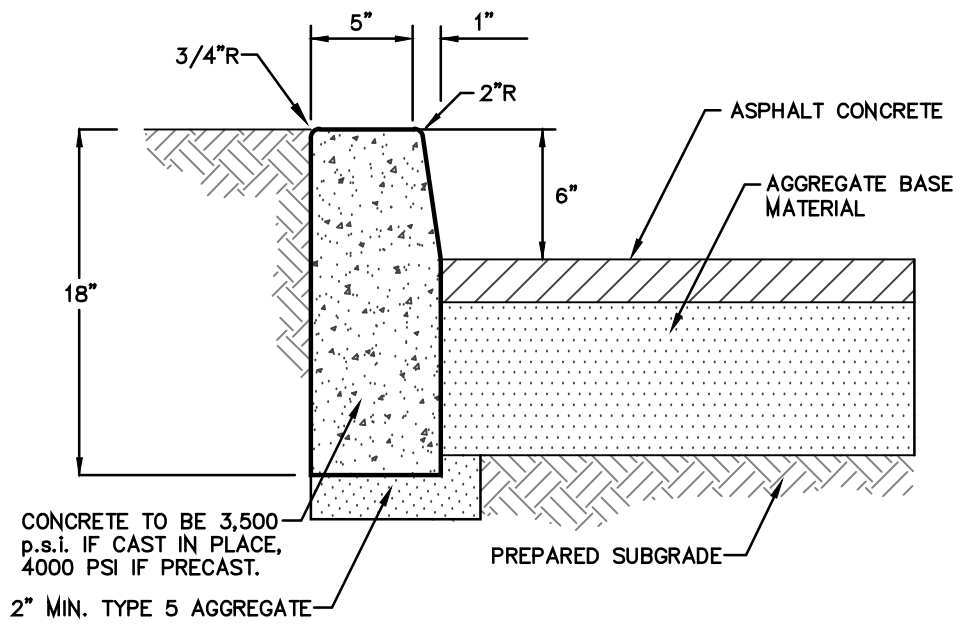
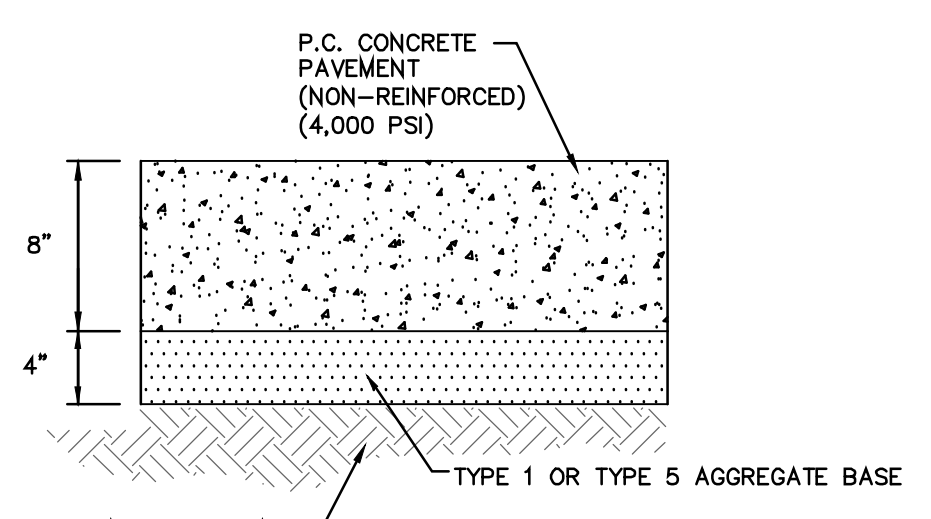


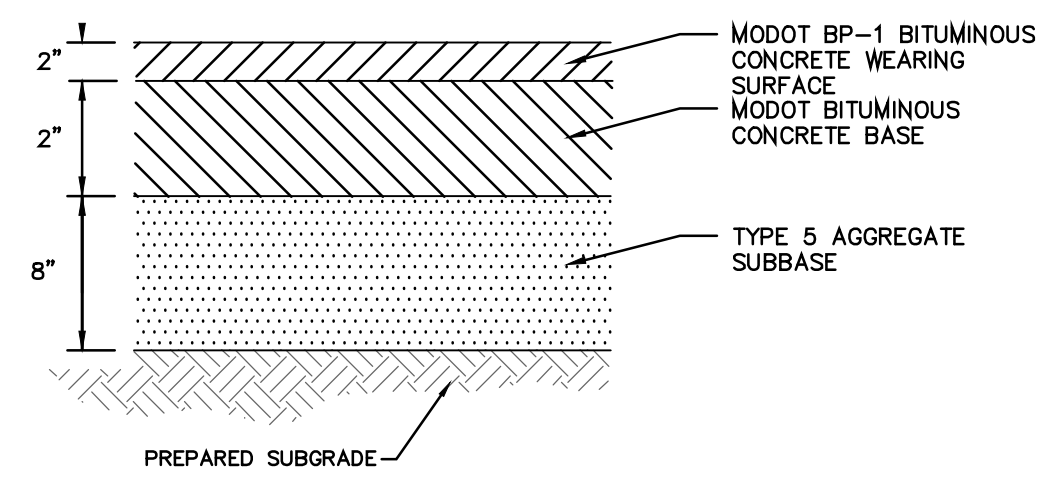
BARRIER CURBING DETAIL
(N.T.S.)



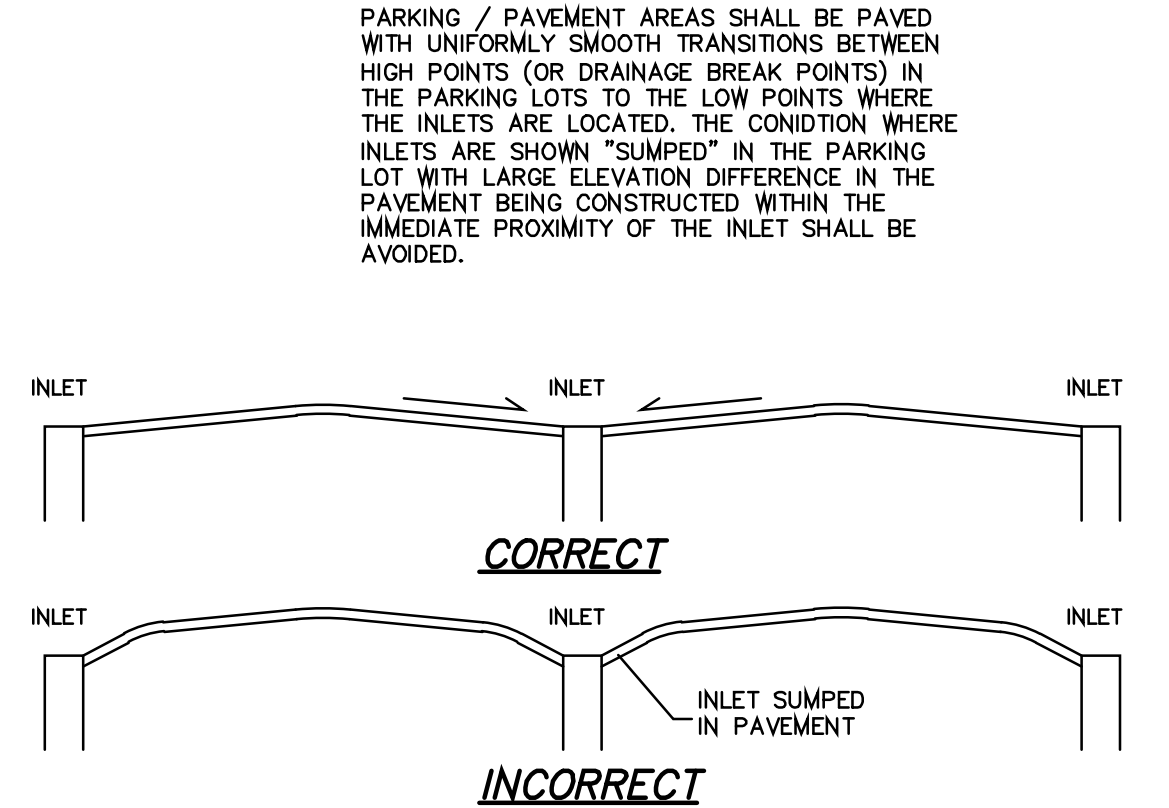
CONCRETE VERTICAL CURB
(NOT FOR USE IN CITY RIGHT-OF-WAY)



CONCRETE PAVEMENT DETAIL
NOT TO SCALE

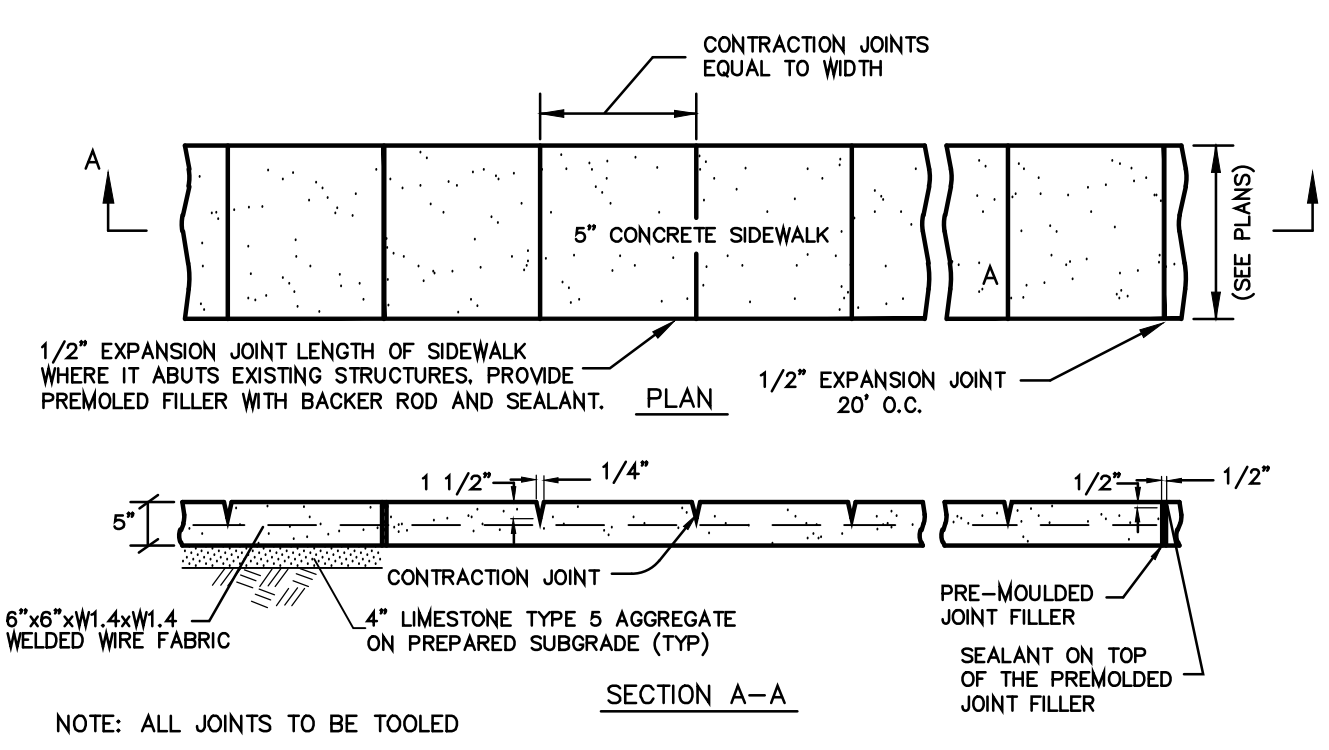


ASPHALT PAVEMENT DETAIL
NOT TO SCALE

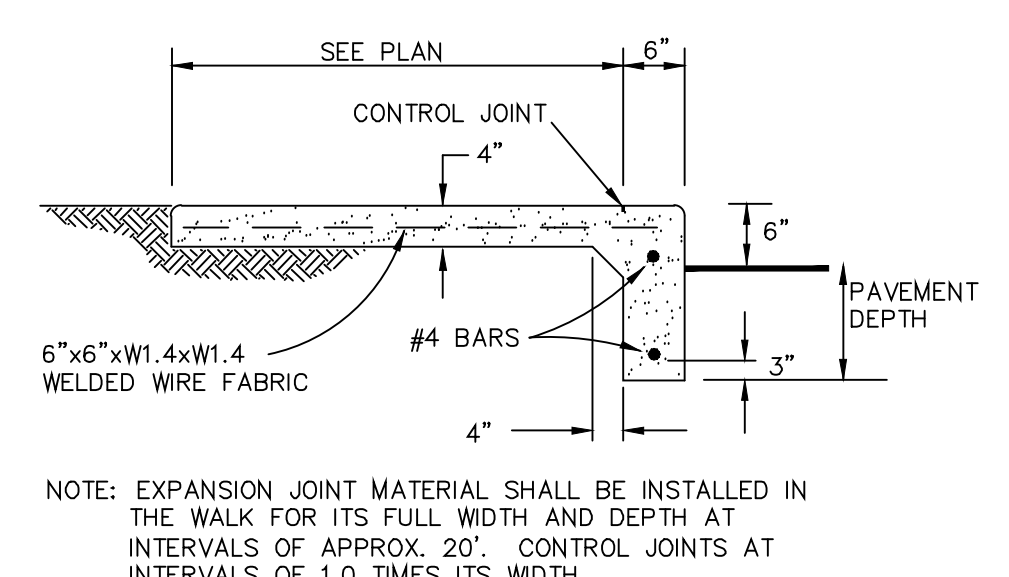


NOTE TO PAVEMENT CONTRACTOR

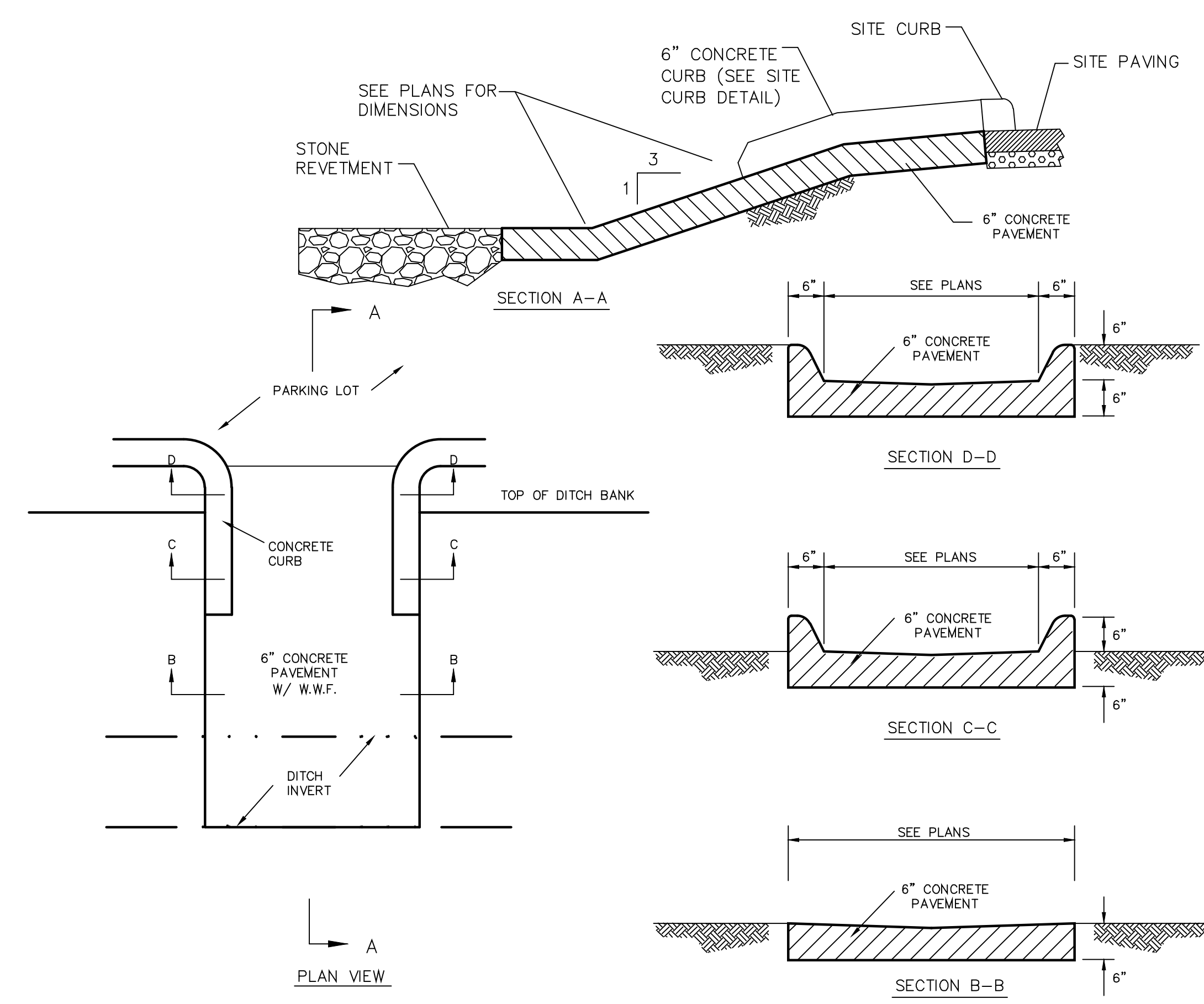
PARKING / PAVEMENT AREAS SHALL BE PAVED WITH UNIFORMLY SMOOTH TRANSITIONS BETWEEN HIGH POINTS (OR DRAINAGE BREAK POINTS) IN THE PARKING LOTS TO THE LOW POINTS WHERE THE INLETS ARE LOCATED. THE CONDITION WHERE INLETS ARE SHOWN "SUMPED" IN THE PARKING LOT WITH LARGE ELEVATION DIFFERENCE IN THE PAVEMENT BEING CONSTRUCTED WITHIN THE IMMEDIATE PROXIMITY OF THE INLET SHALL BE AVOIDED.



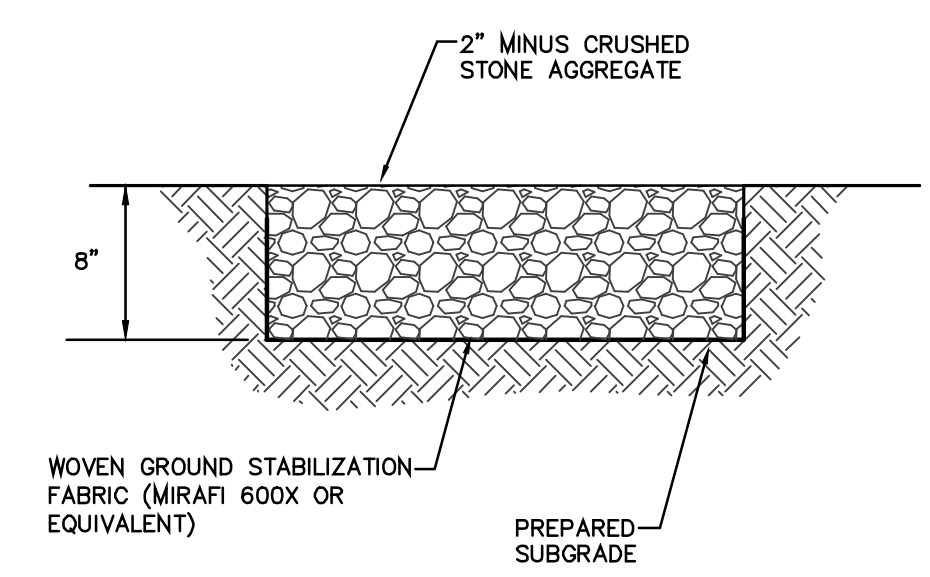
DETAIL OF CONCRETE SIDEWALK
(NOT FOR USE IN CITY RIGHT-OF-WAY)



INTEGRAL SIDEWALK/CURB DETAIL

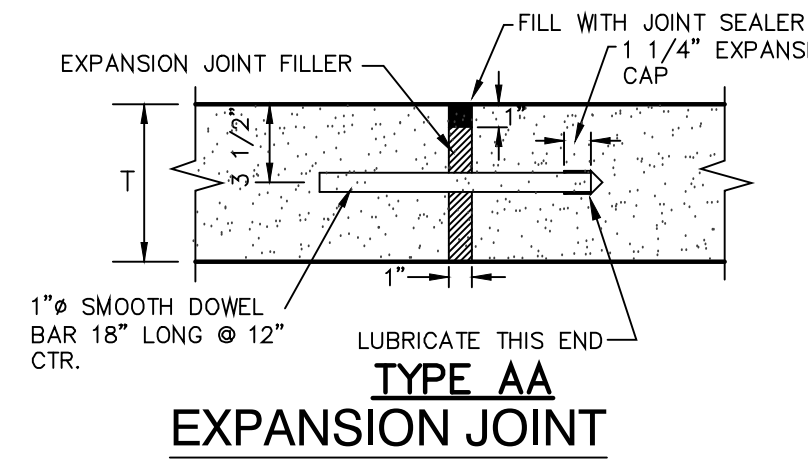


TYPICAL FLUME DETAIL
(REFER TO PLANS FOR EXACT LOCATIONS AND LAYOUT)

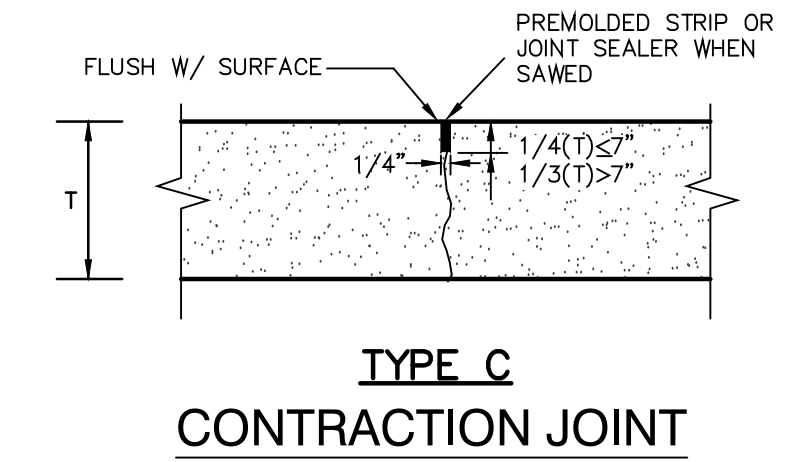


AGGREGATE ACCESS DRIVE
NOT TO SCALE

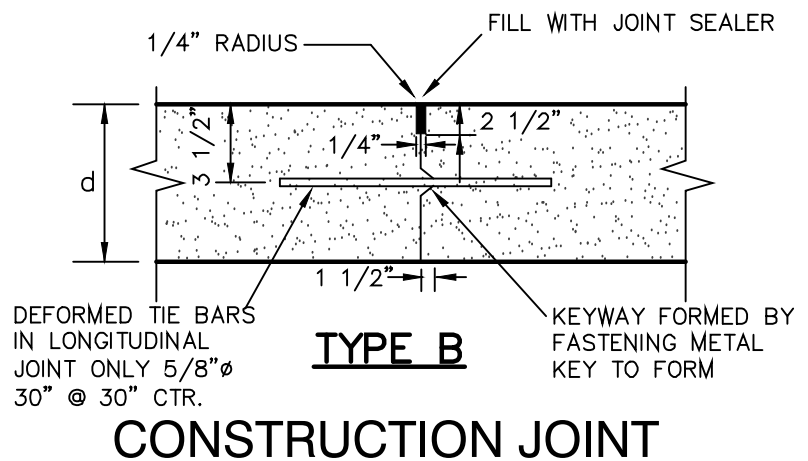
- NOTES:
- CONSTRUCTION JOINTS ARE REQUIRED BETWEEN ALL POURS SEPARATED BY MORE THAN 30 MINUTES TIME.
 - PLACE LONGITUDINAL CONSTRUCTION JOINT AT CENTERLINE OF ROADWAYS WHEN PAVEMENT IS WIDER THAN 12'.
 - MAXIMUM OF EIGHT FEET (8') SPACING BETWEEN CONTROL JOINTS FOR 5" THICK PAVEMENT; SIXTEEN FEET (16') FOR 8" THICK PAVEMENT.
 - FILL JOINTS TO WITHIN 1/8" OF SURFACE WITH JOINT SEALER.
 - JOINTS TO BE SEALED WITH LIMESTONE COLORED SEALANT.
 - WHEN A JOINT FALLS WITHIN 5' OF A MANHOLE, LIGHT POLE BASE, OR OTHER STRUCTURE, SHORTEN ONE OR MORE PANELS ON EITHER SIDE OF STRUCTURE TO ALLOW CONTROL JOINTS TO FALL AT STRUCTURE.
 - CONTRACTOR MAY SUBMIT ALTERNATE JOINTING PLAN TO ENGINEER FOR REVIEW.



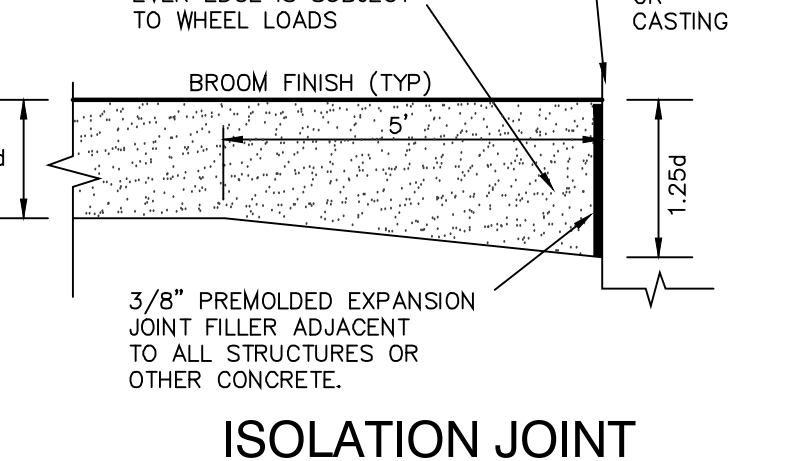
TYPE AA EXPANSION JOINT



TYPE C CONTRACTION JOINT



TYPE B CONSTRUCTION JOINT



ISOLATION JOINT