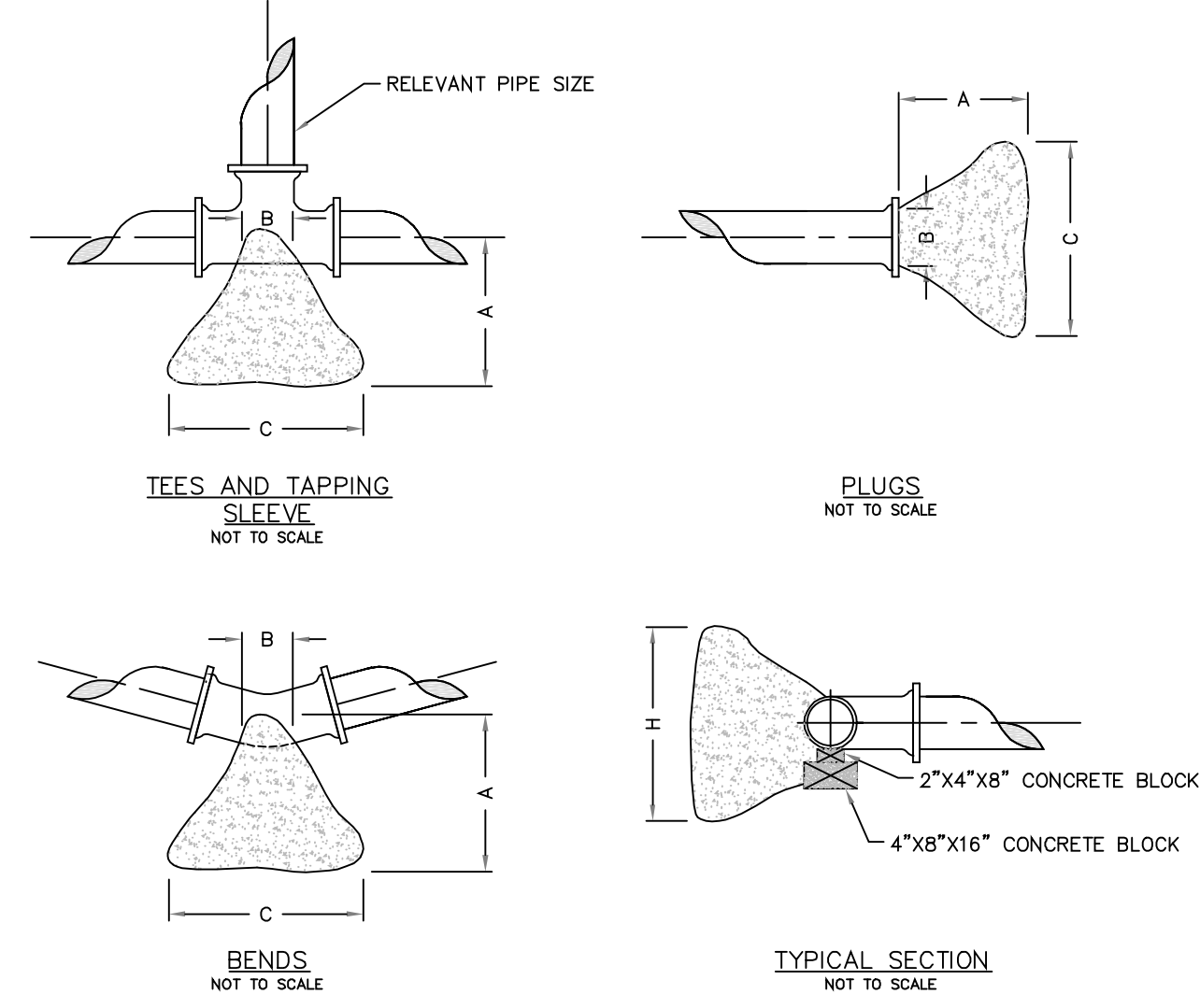


NOTE: THIS DETAIL IS FROM PWS#2



**THRUST BLOCK DIMENSIONS - INCHES**

PIPE DIA.	ALL FTGS.		TEE PLUG TAPPING		90 DEGREE BEND		45 DEGREE BEND		22-1/2 BEND		11-1/4 BEND	
	A	B	C	H	C	H	C	H	C	H	C	H
4	14	4	24	12	26	15	18	12	12	12	12	12
6	16	6	36	18	36	24	30	18	24	12	12	12
8	20	8	36	30	42	36	36	24	24	18	18	12
10	20	10	48	36	66	36	36	28	24	18	18	18
12	24	12	68	36	82	42	52	36	40	24	28	18

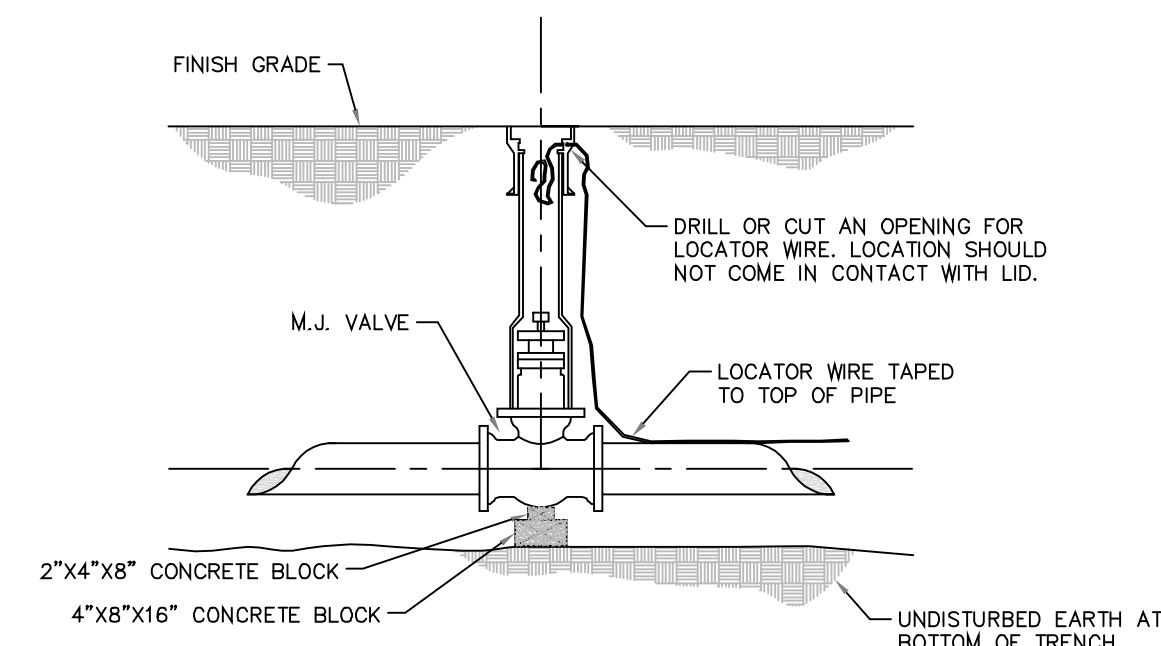
**NOTE**

FOR FITTINGS LARGER THAN 12", SPECIAL RESTRAINT DESIGNS ARE REQUIRED.

HORIZONTAL THRUST BLOCKING  
DETAIL "C"

NOTE: THIS DETAIL IS FROM PWS#2

Buffalo box is an acceptable product to use.  
Tyler 562-S and 564-S are acceptable products.

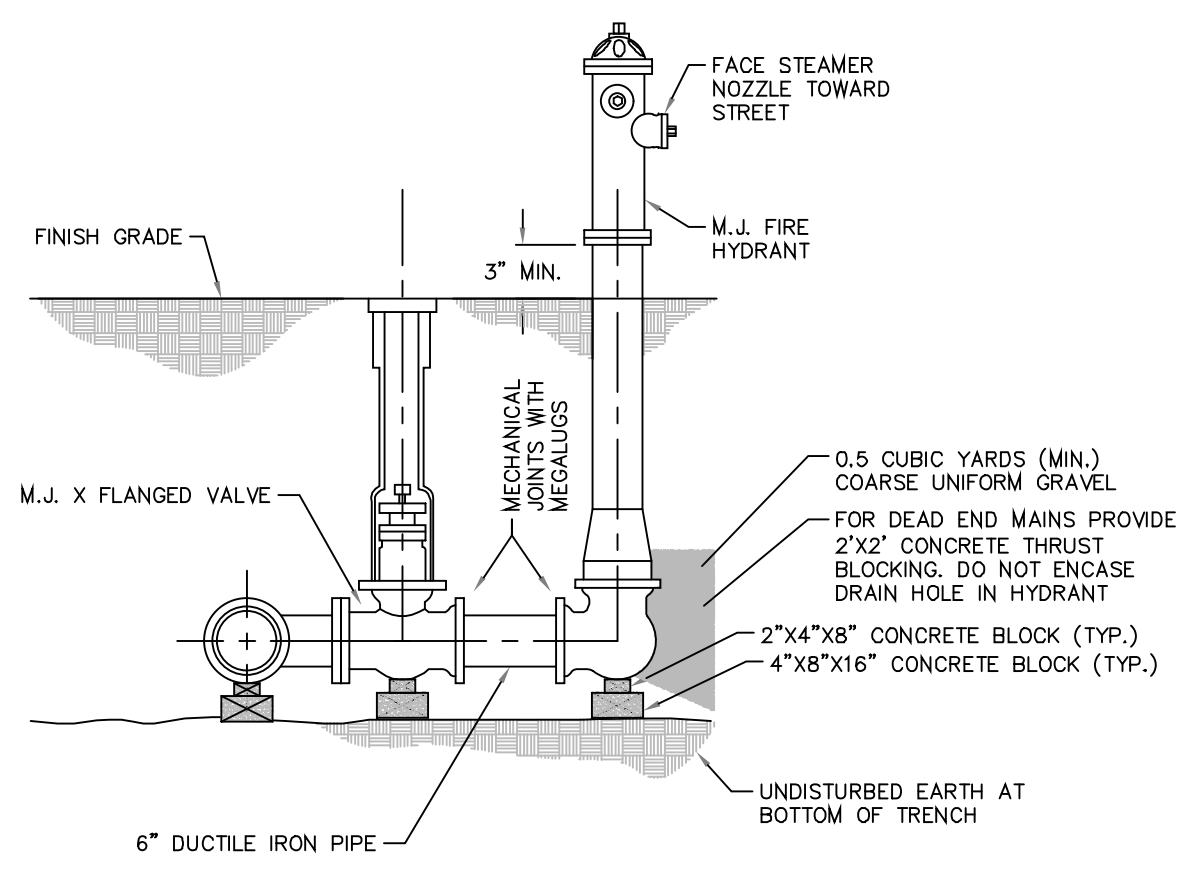
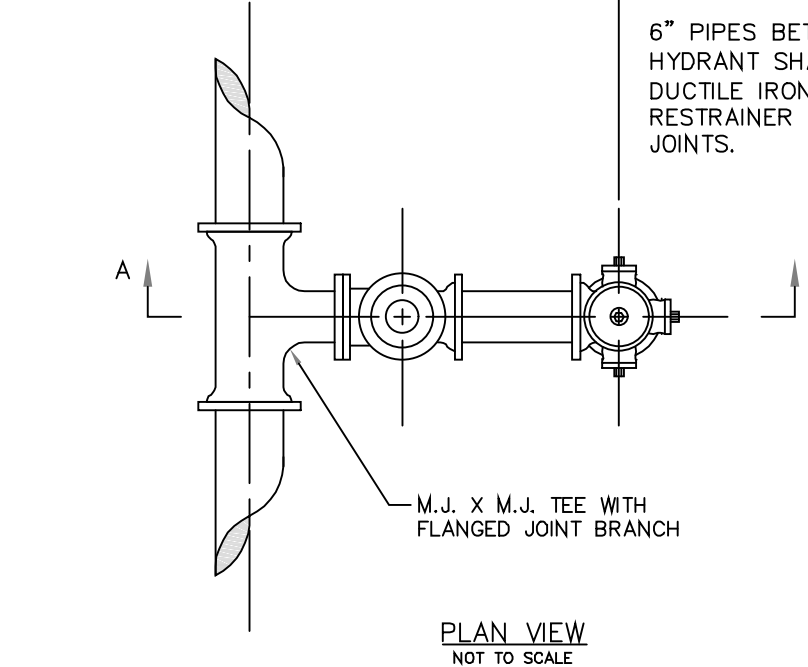


GATE VALVE DETAIL  
NOT TO SCALE  
DETAIL "D"

NOTE: THIS DETAIL IS FROM PWS#2

**NOTES**

6" PIPES BETWEEN VALVE AND FIRE HYDRANT SHALL BE D.I. "ANCHOR LOKS" OR DUCTILE IRON PIPE WITH "MEGALUG" RESTRAINER FOLLOWER GLANDS ON ALL M.J. JOINTS.

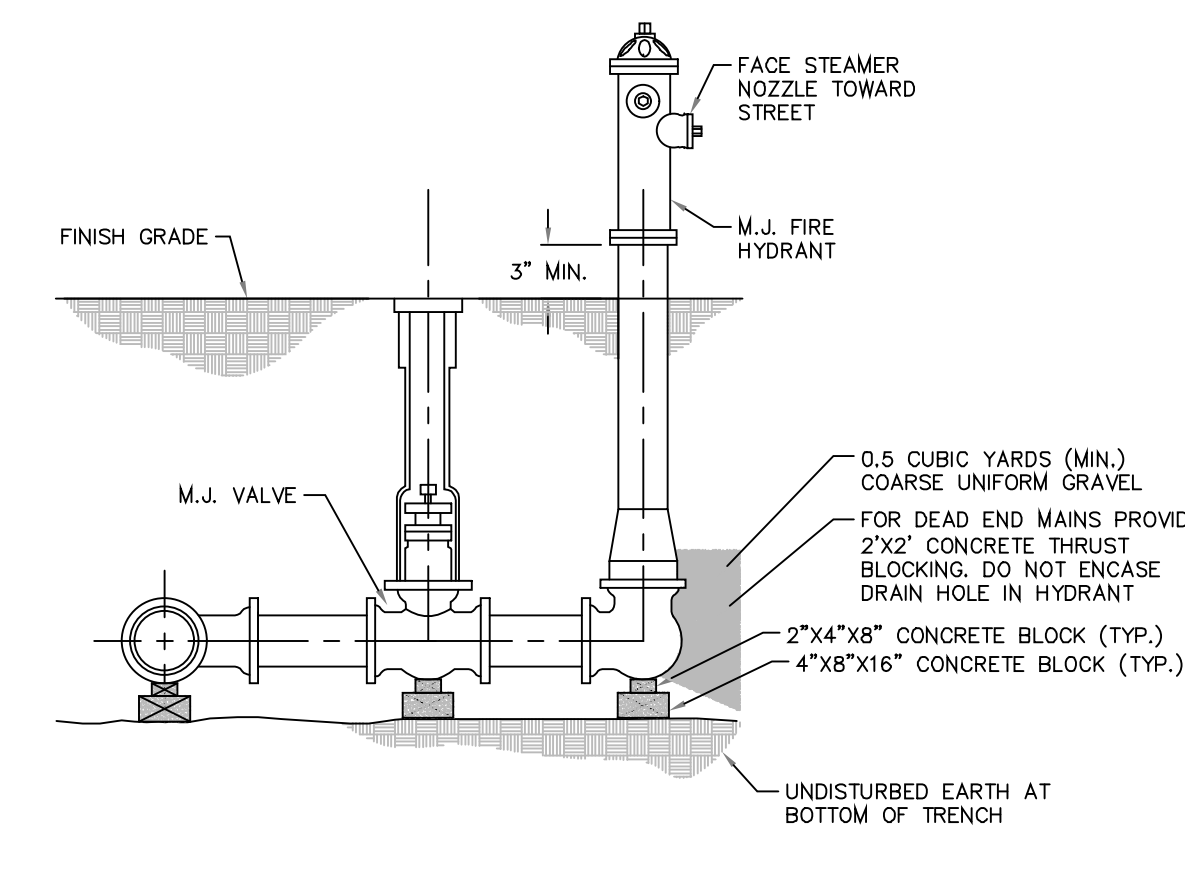
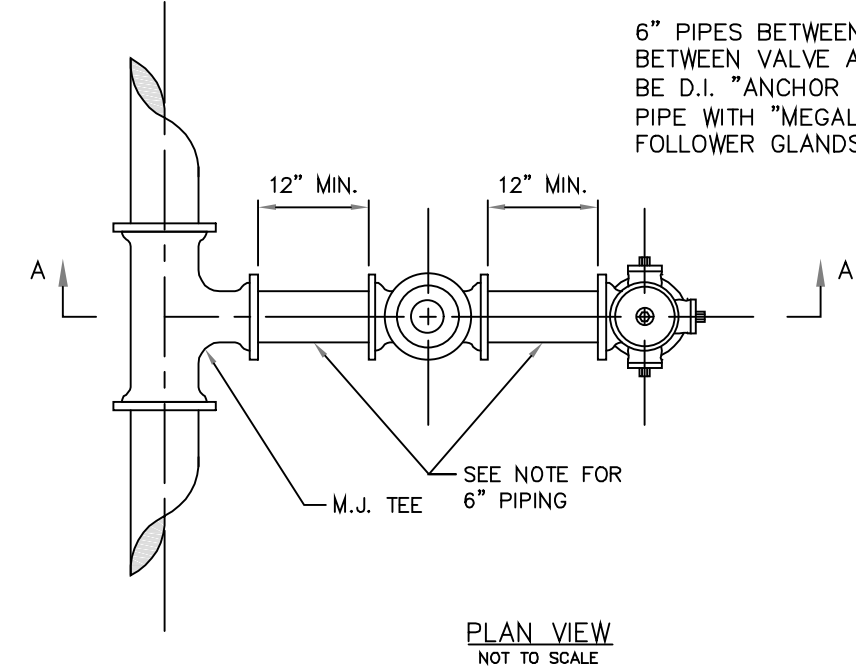


SECTION "A-A"  
NOT TO SCALE  
FIRE HYDRANT DETAIL  
DETAIL "B"  
PAGE 1 OF 3

NOTE: THIS DETAIL IS FROM PWS#2

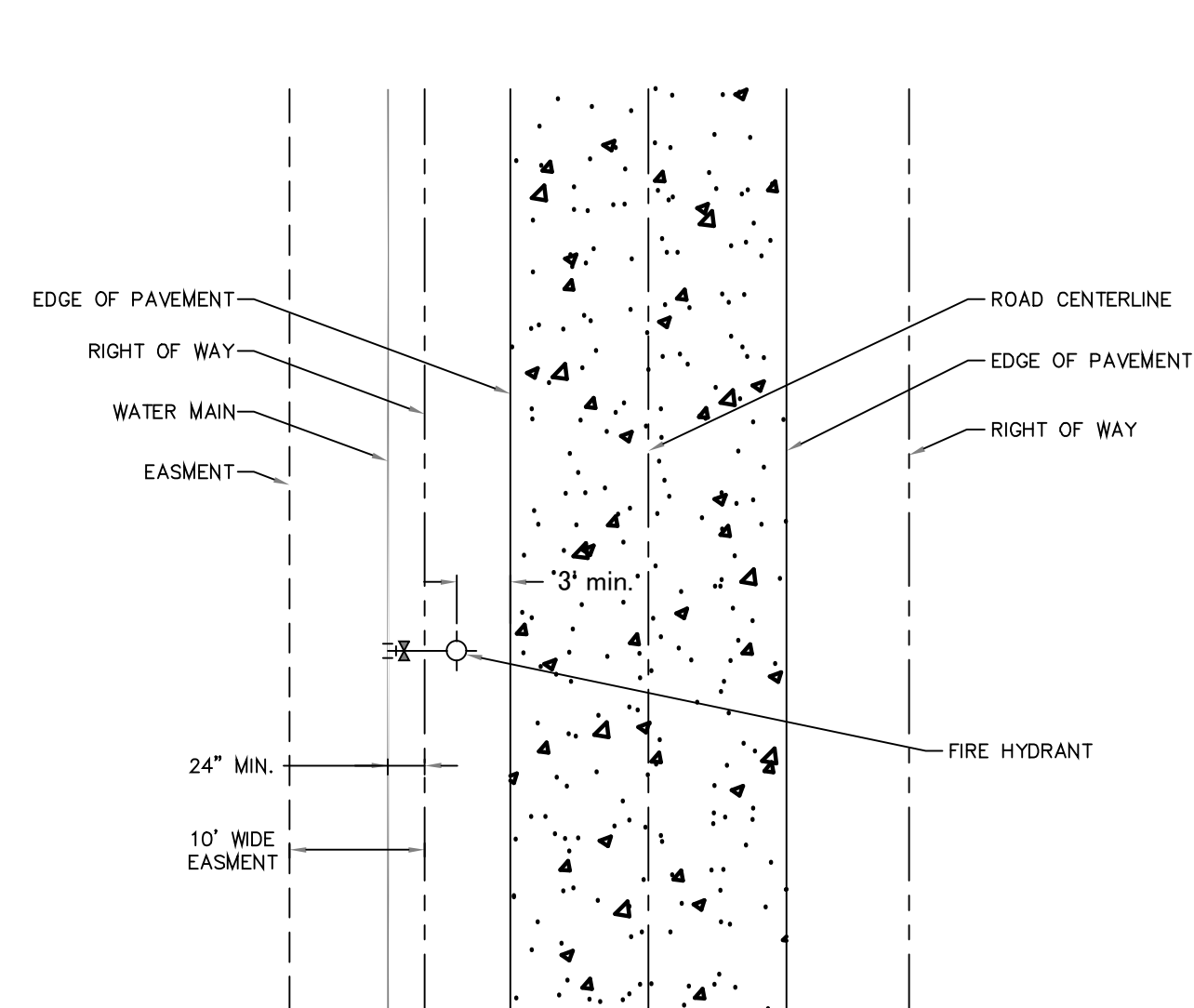
**NOTES**

6" PIPES BETWEEN TEE AND VALVE AND BETWEEN VALVE AND FIRE HYDRANT SHALL BE D.I. "ANCHOR LOKS" OR DUCTILE IRON PIPE WITH "MEGALUG" RESTRAINER FOLLOWER GLANDS ON ALL M.J. JOINTS.



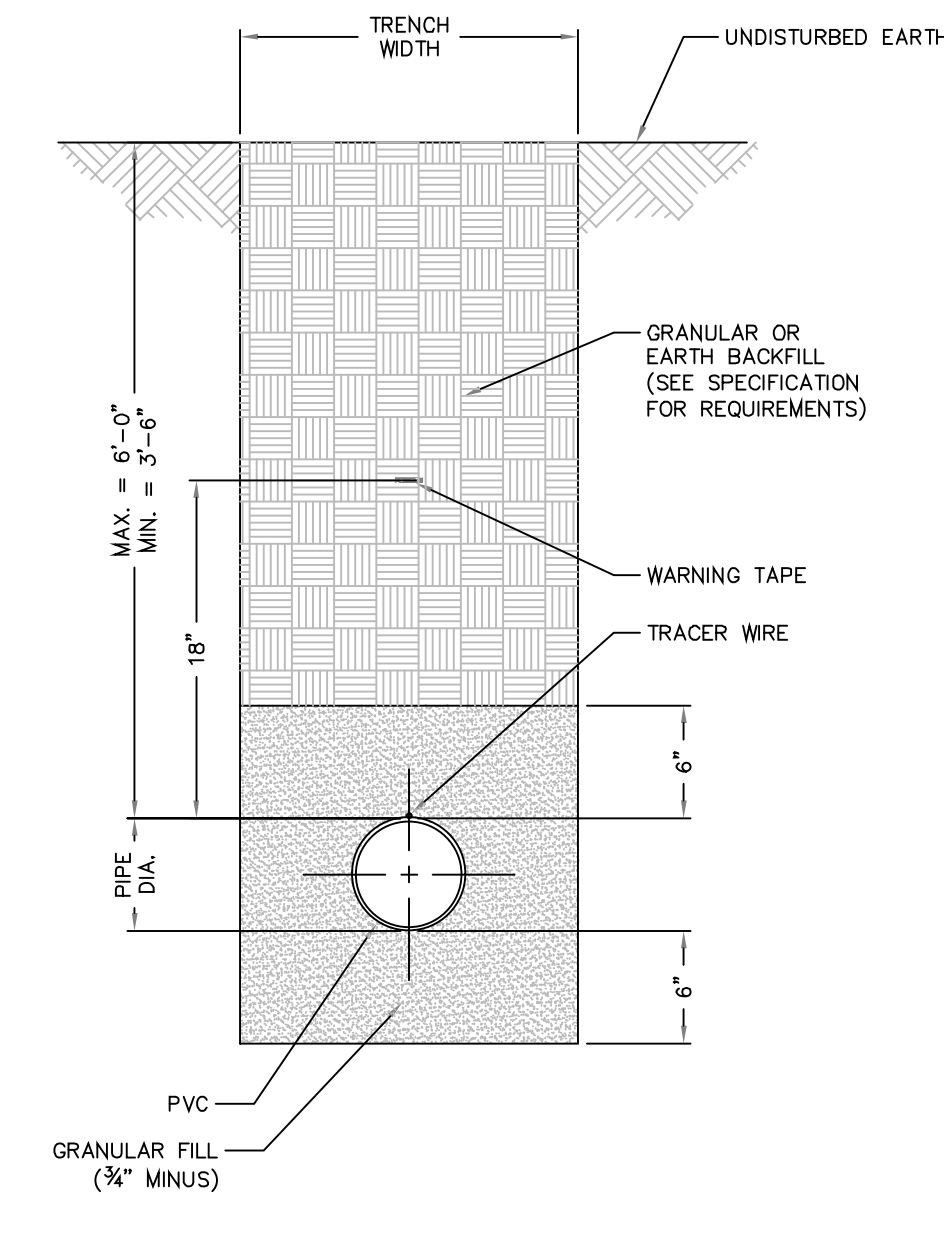
SECTION "A-A"  
NOT TO SCALE  
FIRE HYDRANT DETAIL  
DETAIL "B"  
PAGE 2 OF 3

NOTE: MODIFIED DETAIL FROM PWS#2



FIRE HYDRANT LOCATION  
NOT TO SCALE  
FIRE HYDRANT DETAIL  
DETAIL "B"  
PAGE 3 OF 3

NOTE: THIS DETAIL IS FROM PWS#2

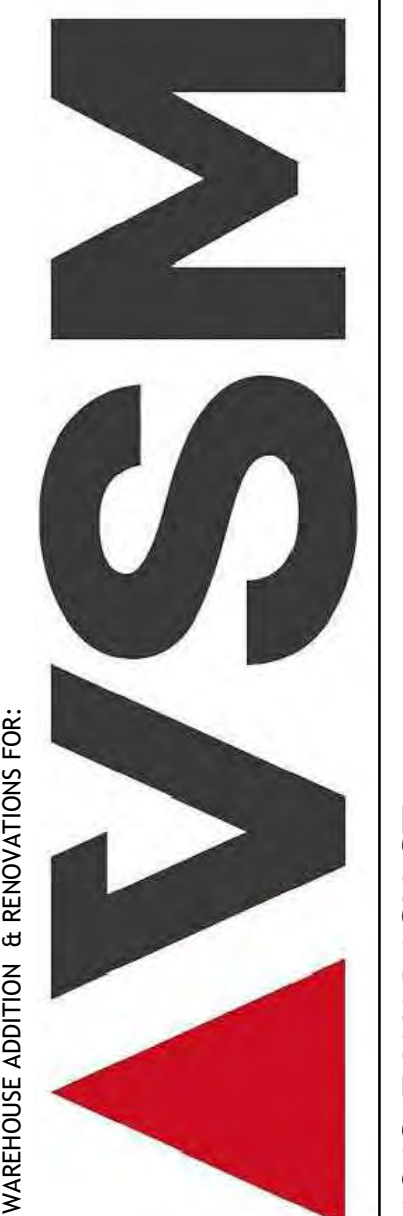


**NOTES**  
1) SEE SPECIFICATIONS FOR ADDITIONAL DETAILS FOR BEDDING AND BACKFILL.  
TYPICAL TRENCH SECTION FOR PVC PIPE  
NOT TO SCALE  
DETAIL "A"  
PAGE 1 OF 2



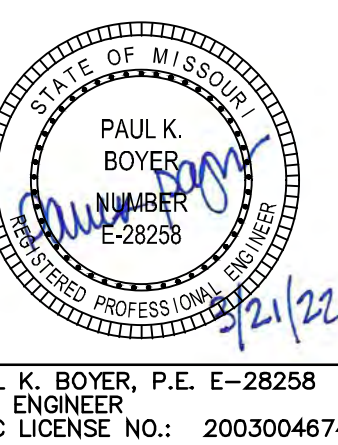
**ARCHITECT:**  
Mitchell and Hugelback Architects, Inc.  
D.B.A. M+H Architects  
2150 Schuetz Road, Suite 200  
St. Louis, Missouri 63146  
314-878-3500  
www.mh.us.com  
Corporate License No.: 000614

**CONSULTANTS:**  
**Civil:**  
Civil Engineering Design Consultants, Inc.  
10820 Sunset Office Drive, Suite 200  
St. Louis, MO 63127  
314-729-1400  
Corporate License No.: 2003004674  
**Structural:**  
SSC Engineering, Inc.  
18207 Edison Ave.  
St. Louis, MO 63005  
636-530-7770  
Corporate License No.: 001244  
**MEP:**  
(Design - Build)



WAREHOUSE ADDITION & RENOVATIONS FOR:

1012 E WABASH ST  
OFALLON, MO 63366



**DESCRIPTION:**  
01/05/22 Construction Site Plan Submittal  
01/14/22 Permit / Bid Set  
02/24/22 City comments  
03/21/22 City comments

Issue Date: 01/14/22  
Job Number: 1981.1  
Drawn By: PKB  
Checked By: PKB  
Drawing Title:

Site Details

C8.1