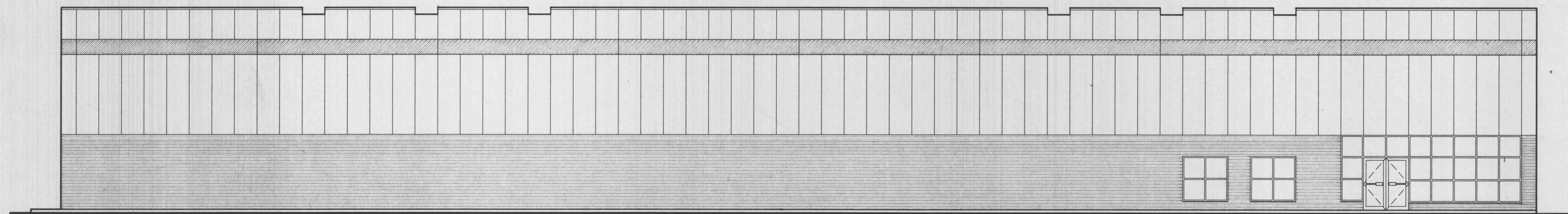




# PHOTOGRAPHIC STUDIO WAREHOUSE

1835 EAST TERRA LANE

CITY OF O'FALLON, MISSOURI



## SCHEDULE OF DRAWINGS

### CIVIL:

C-1	LAYOUT AND PAVEMENT PLAN
C-2	GRADING PLAN
C-3	SEWER AND UTILITY PLAN
C-4	SITE DETAILS
C-5	FENCING DETAILS
C-6	ENTRANCE DETAILS AND ROAD PROFILES
C-7	SEWER PROFILES
C-8	WATER MAIN EXTENSION PLAN AND PROFILE
C-9	WATER MAIN DETAILS
L-1	LANDSCAPE PLAN

### STRUCTURAL:

S-1	FOUNDATION PLAN
S-2	ROOF FRAMING PLAN
S-3	STRUCTURAL DETAILS
S-4	BUILDING FRAMING ELEVATIONS

### ARCHITECTURAL:

A-1	FLOOR PLAN
A-2	REFLECTED CEILING PLAN
A-3	ROOF PLAN AND DETAILS
A-4	ENLARGED OFFICE PLAN AND DETAILS
A-5	EXTERIOR BUILDING ELEVATIONS AND DETAILS
A-6	EXTERIOR BUILDING ELEVATIONS AND DETAILS
A-7	BUILDING SECTION AND WALL SECTIONS
A-8	BUILDING SECTION AND WALL SECTIONS
A-9	INTERIOR ELEVATIONS AND DETAILS
A-10	MISC. DETAILS
A-11	ROOM FINISH AND DOOR SCHEDULE

### MECHANICAL/PLUMBING:

MP-1	FLOOR PLAN
MP-2	ROOF PLAN
MP-3	RISER DIAGRAM AND DETAILS

### FIRE PROTECTION:

FP-1	FLOOR PLAN
FP-2	OFFICE AREA AND RISER DIAGRAM

### ELECTRICAL:

E-1	SITE PLAN
E-2	1/8" SCALE LIGHTING PLAN
E-3	1/8" SCALE POWER PLAN
E-4	1/4" SCALE OFFICE POWER PLAN
E-5	SYMBOLS AND DETAILS

### BUILDING OCCUPANCY AND EGRESS

<u>OCCUPANTS</u>	
OFFICE	6,032 / 100 = 60.32
WAREHOUSE	32,384 / 300 = 107.95
BUILDING FOOT PRINT	38,416 SQ. FT. = 168.27

## PROJECT TEAM

### ARCHITECT, STRUCTURAL AND CIVIL ENGINEERS:

FARNSWORTH REINHARDT POLK, INC.  
ARCHITECTS & ENGINEERS  
144 W. LOCKWOOD AVE.  
ST. LOUIS, MISSOURI 63119  
314/962-7900

### MECHANICAL, PLUMBING AND ELECTRICAL CONSULTANTS:

JOSEPH KENT DEATON, INC.  
CONSULTING ENGINEERS  
300 BILTMORE DR. SUITE 117  
FENTON, MISSOURI 63026  
314/343-4774

K-2 CONSULTANTS, INC.  
ENGINEERING SERVICES  
POST OFFICE BOX 98  
BLOOMSDALE, MISSOURI 63627  
314/483-9729

### OWNER

VENTURE STORES, INC.  
2001 EAST TERRA LANE  
O'FALLON, MO 63366  
PROJECT MANAGER:  
ROWDY R. MONTGOMERY  
314/281-5174

### GENERAL CONTRACTOR

KADEAN CONSTRUCTION COMPANY, INC.  
5661 TELEGRAPH ROAD  
ST. LOUIS, MO 63129  
VICE PRESIDENT IN CHARGE:  
GARY FROSSARD  
314/846-1212

*G. BA Cory*  
**APPROVED** AS NOTED  
*11-6-92*  
*Frank Johnson*

DATE: SEPTEMBER 28, 1992

PROJECT NO: 92106.1, 92106.2