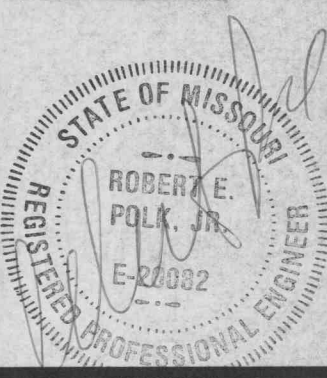


SEWER AND UTILITY PLAN



REVISIONS

NO.	DATE	DESCRIPTIONS
1		ADDED WATER MAINS, HYDRANTS, VALVES, ETC.
2	10-22-92	ADDED SANITARY SEWER MANHOLES

CONSTRUCTION NOTES

Existing underground utilities shown herein are from information provided by utilities and must be considered as approximate. Contractor shall be responsible for determining exact locations prior to commencing work.

All materials and workmanship associated with the sanitary sewer construction shall meet the requirements of the Revised Standard Construction Details for Sewers and Drainage Facilities - 1992 and the Standard Construction Specifications for Sewers and Drainage Facilities - 1992 both as prepared by the Metropolitan St. Louis Sewer District (MSD).
NO WATER JETTING OF BACKFILL WILL BE ALLOWED

Polyvinyl chloride (PVC) pipe shall conform to ASTM D-3034 type PSM with an SDR of 35. Joints shall be elastomeric gasket type meeting the requirements of ASTM D3212.

Reinforced concrete pipe (R.C.P.) shall be Class 111. Wall Be meeting the requirements of ASTM C76. Cement used in pipe shall be Portland Cement Type 11 meeting the requirements of ASTM C150.

Material and workmanship requirements established by the City of O'Fallon shall supercede corresponding MSD requirements. The following is a non-inclusive listing of such requirements established by the City:

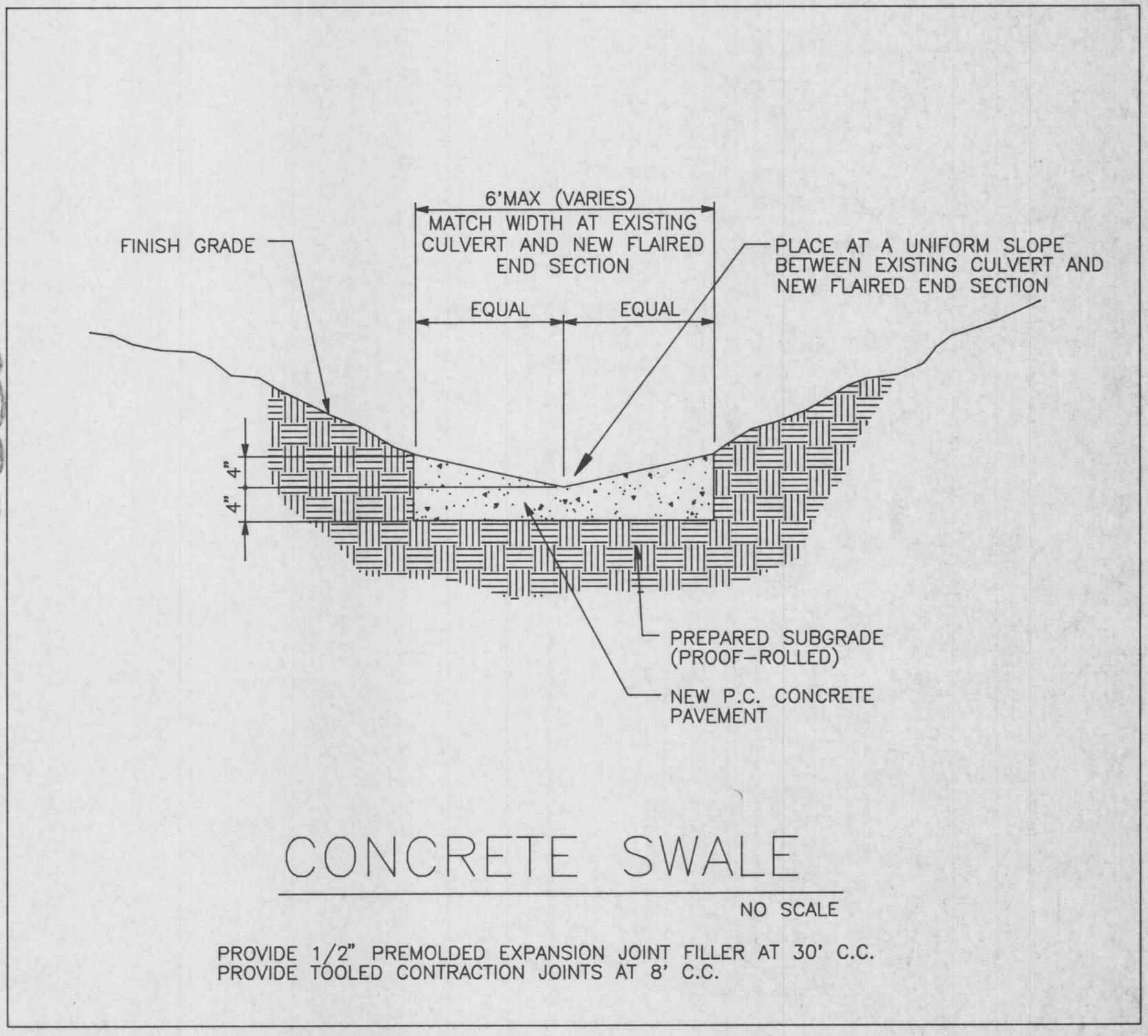
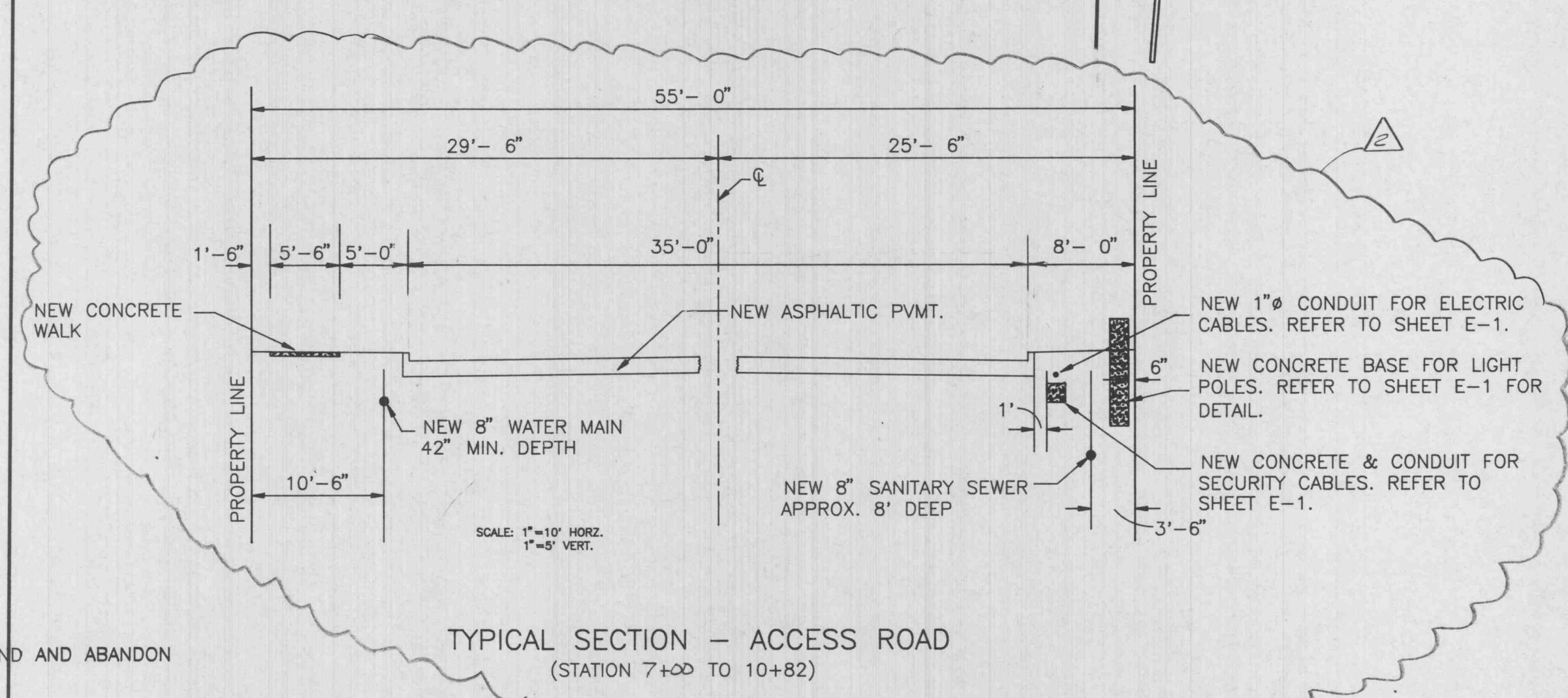
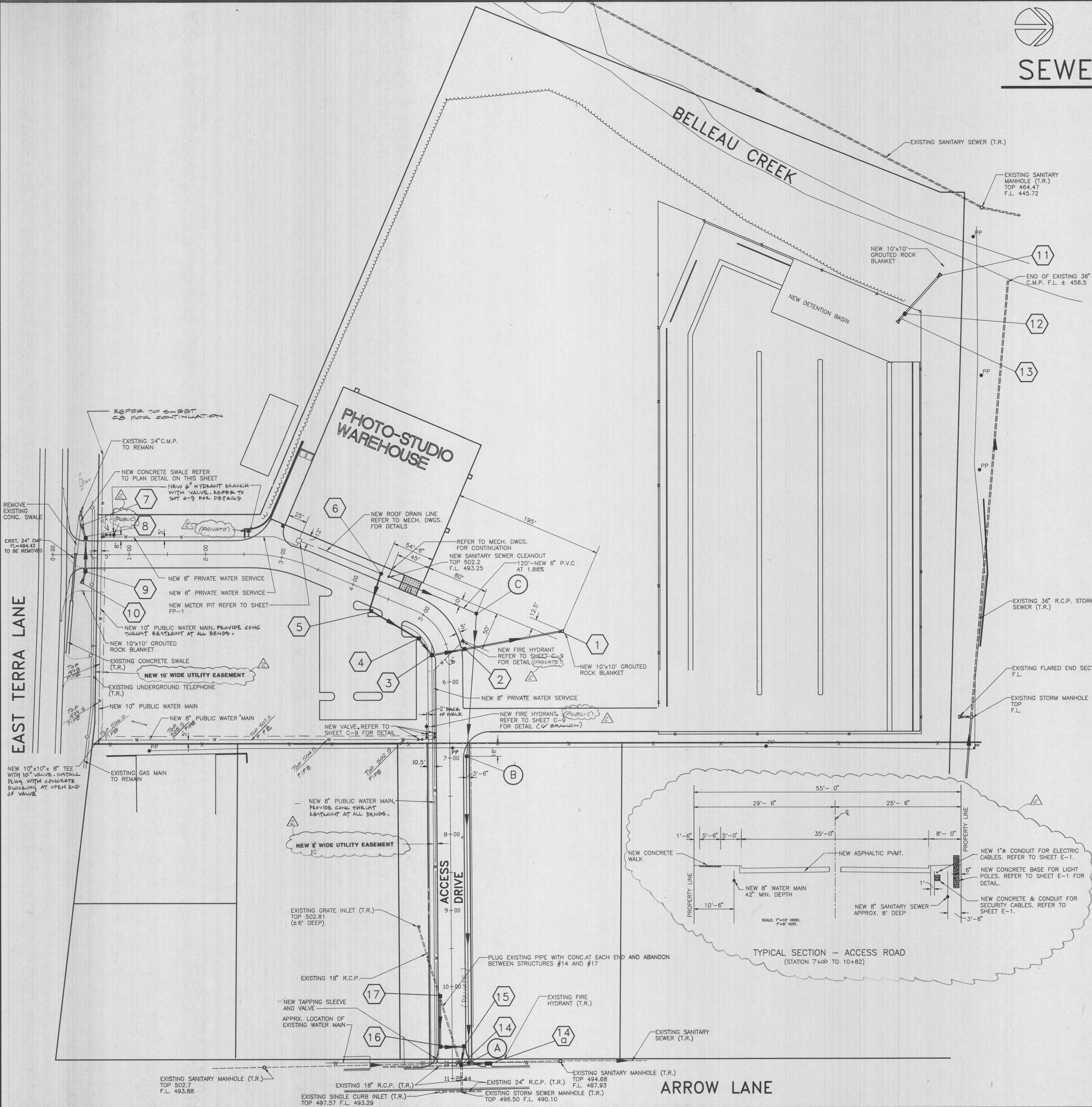
- All manholes shall have the flowline of the outgoing pipe 0.2' lower than all incoming pipes.
- All new manhole frames shall be set 0.2' above existing grade except in paved areas.
- Manhole frame and covers shall be: Clay & Bailey 2008, Neenah R-1736, Deeden 1315 or approved equal.
- All manholes shall be coated on the outside with a 31 mil. thick layer of asphalt dampproofing compound.

Contractor shall verify elevation of existing sewer prior to laying any pipe. Pipe shall be laid starting at downstream end and continuing upstream. Restore all areas disturbed by new construction to original condition.

Class "A" concrete shall attain a minimum compressive strength of 3500 psi @ 28 days per MSD standards.

LEGEND

- To Remain (T.R.)
- To Be Removed (T.B.R.)
- New Sewer (with direction flow)
- New Sanitary Structure Designator (B)
- New Storm Sewer Structure Designator (1)



PHOTOGRAPHIC STUDIO WAREHOUSE
VENTURE STORES INCORPORATED
1835 EAST TERRA
CITY OF O'FALLON, MISSOURI

Farnsworth Reinhardt Polk, Inc.
architects & engineers

144 W. Lockwood Ave.
St. Louis, Mo. 63119
Phone (314)962-7900
Fax (314)962-1253

TITLE: SEWER AND UTILITY PLAN

DATE: 9-18-92
PROJECT NO.: 92106

SHEET: **C-3**