

NO.	DATE	DESCRIPTION
1	10-16-92	REV. SET
2	10-16-92	RTU LOCATION & CLASSIFICATION
3	10-27-92	RELOCATE ON PREVENTER

Joseph Kent Deaton, Inc.
 Consulting Engineers
 117
 1000 N. Grand Blvd.
 St. Louis, Mo. 63102
 314/543-4774
 K2 Consultants, Inc.
 Engineering Services
 Post Office Box 98
 St. Louis, Missouri 63102
 314/484-9729

PHOTOGRAPHIC STUDIO WAREHOUSE
 VENTURE STORES INCORPORATED
 1835 EAST TERRA
 CITY OF O'FALLON, MISSOURI

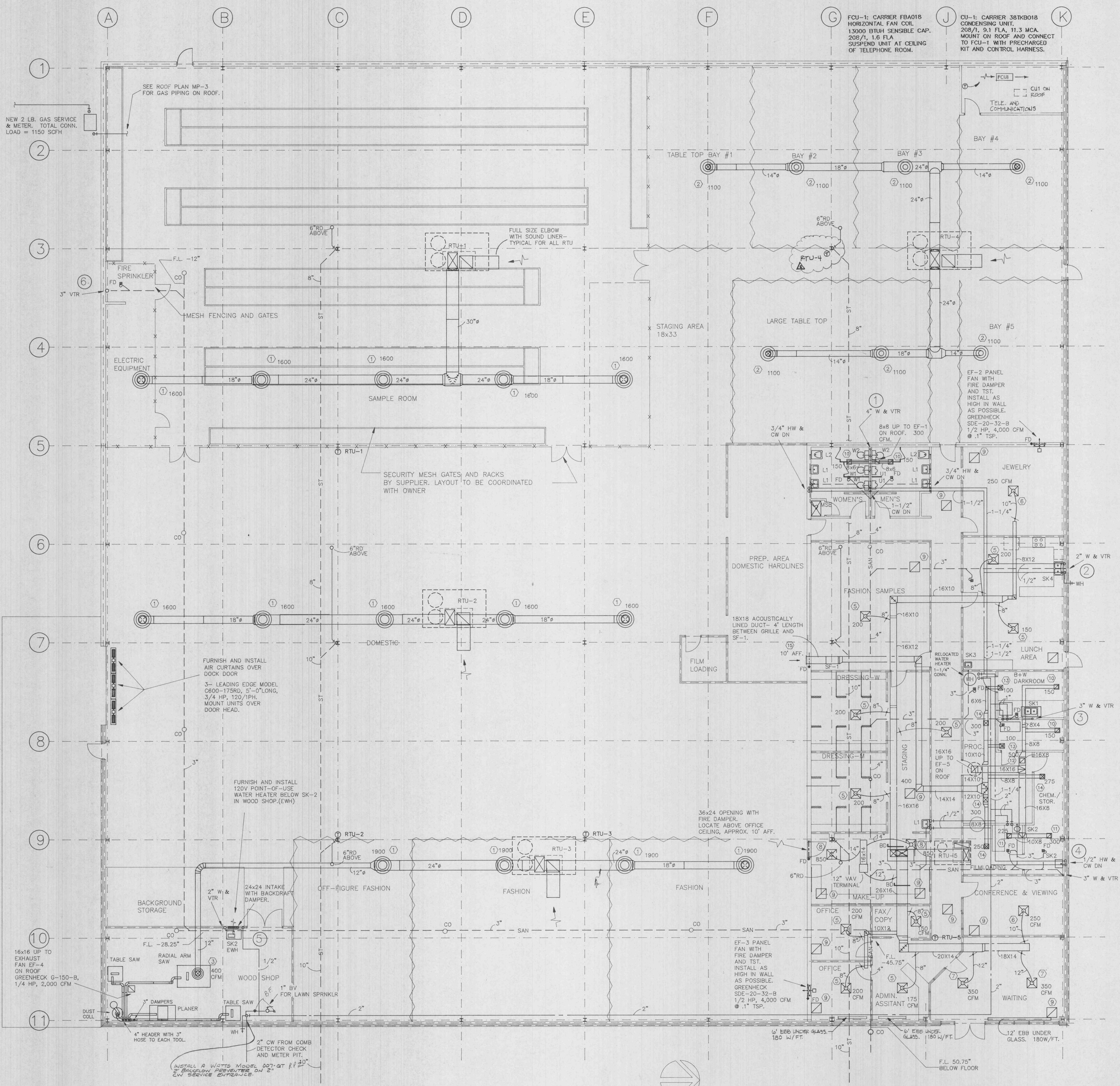
Farnsworth
 Reinhardt
 Polk, Inc.

architects
 & engineers
 144 W. Lockwood Ave.
 St. Louis, Mo. 63119
 Phone: (314)982-7900
 Fax: (314)982-1253

TITLE:
 MECHANICAL AND PLUMBING
 FLOOR PLAN
 DATE:

PROJECT NO: 92106.1

SHEET:
 MP-1



MECHANICAL AND PLUMBING SYMBOLS

- METAL DUCT - UNLINED
- EXHAUST OR RETURN AIR
- SUPPLY AIR
- SPIN-IN WITH DAMPER
- INSULATED FLEXIBLE DUCT
- EF EXHAUST FAN
- SF SUPPLY FAN
- EBB ELECTRIC BASEBOARD HEATER
- RTU ROOFTOP UNIT
- AIR DEVICE - SEE SCHEDULE
- GAS PIPING
- TEMPERATURE SENSOR FOR EMS BY EMS CONTRACTOR
- BALANCE DAMPER
- VOLUME DAMPER
- S SOIL
- W WASTE
- V VENT
- S SANITARY SEWER
- VTR VENT THROUGH ROOF
- CO CLEAN OUT
- RISER DIAGRAM
- ST STORM SEWER
- DS DOWNSPOUT
- RD ROOF DRAIN
- F FIRE PROTECTION WATER
- BFP BACKFLOW PREVENTER
- COLD WATER
- HOT WATER
- SHUT-OFF BALL VALVE
- UPRIGHT SPRINKLER HEAD
- PENDANT SPRINKLER HEAD
- SIDEWALL SPRINKLER HEAD

PHOTO LAB EQUIPMENT RELOCATION:

THE FILM LAB EQUIPMENT FOR THIS PROJECT IS TO BE RELOCATED FROM THE EXISTING FILM LAB AT THE OWNERS EXISTING FACILITY NEARBY. ALL CONTRACTORS SHALL REVIEW EQUIPMENT TO BE RELOCATED WITH THE OWNERS PERSONNEL TO INSURE THAT ALL SITE REQUIREMENTS ARE MET PRIOR TO BEGINNING RELOCATION. A MINIMUM OF DOWNTIME FOR THE LAB IS ESSENTIAL AND EVERY EFFORT SHALL BE MADE TO INSURE PROMPT REINSTALLATION AND OPERATION OF ALL RELOCATED EQUIPMENT.

WOOD SHOP EQUIPMENT:

ALL WOODWORKING EQUIPMENT WILL BE FURNISHED AND INSTALLED BY THE OWNER. THIS CONTRACTOR SHALL FURNISH AND INSTALL THE SINK AND THE DUST COLLECTOR. THE DUST COLLECTOR SHALL BE A 55 GALLON DRUM TYPE COLLECTOR WITH OVERSIZE DUST BAG AND 4" HOSE CONNECTION. FURNISH AND INSTALL A COMPLETE SYSTEM OF HOSES AND DAMPERS AS INDICATED TO CONNECT TO ALL WOODWORKING EQUIPMENT. DUST COLLECTOR SHALL BE EQUAL TO A KEI MODEL 2005-3, 1/2 HP, 208/3PH, 450 CFM.