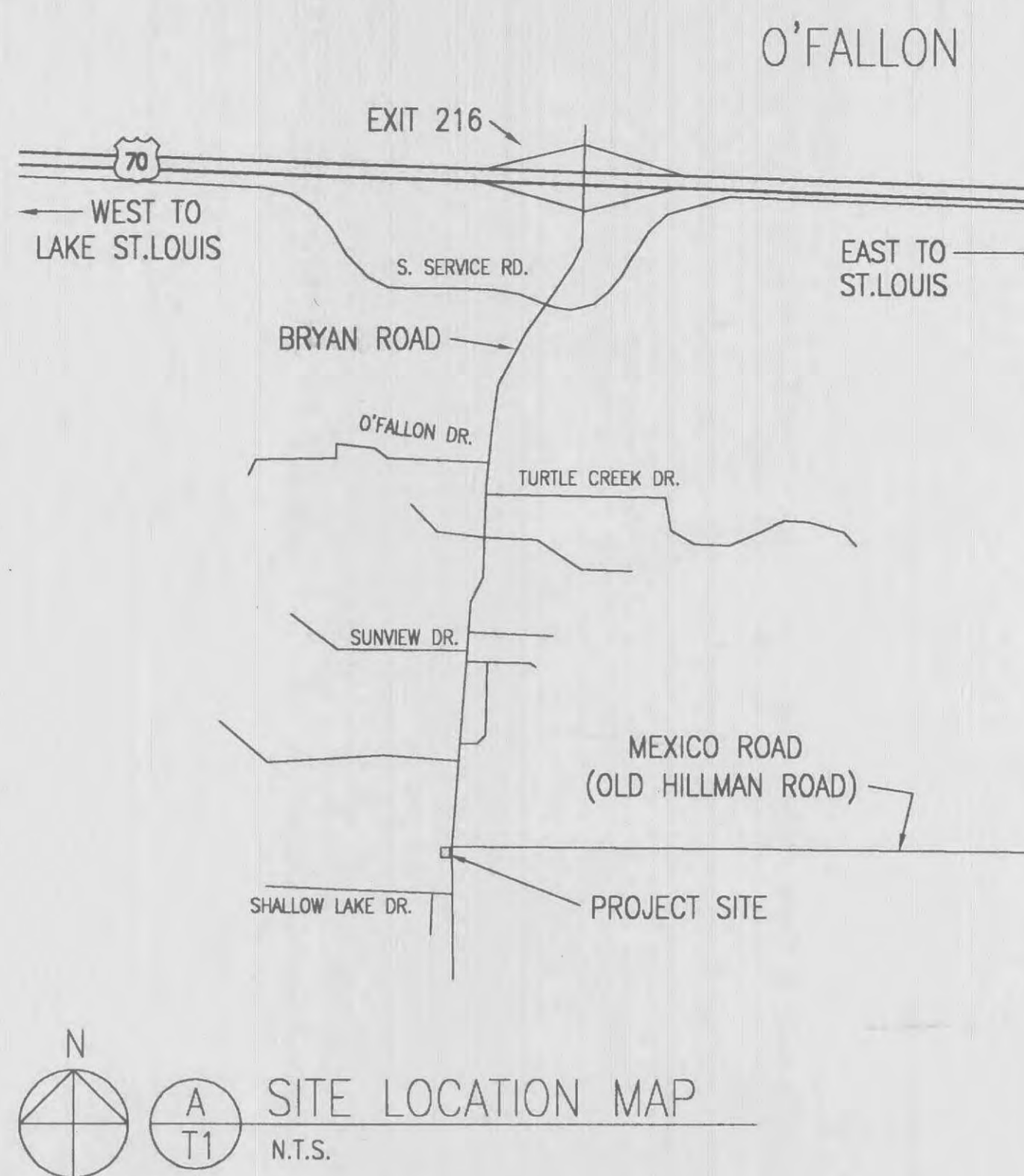




ADDITION TO R.S.U. BLDG. "HILLMAN REMOTE" 1235 BRYAN ROAD O'FALLON, MO EXCHANGE NO: 1043-002 VERIZON PROJECT NO: 7B001DC



SHEET INDEX

- T1 TITLE / COVER SHEET
- SP1 SPECIFICATIONS
- SP2 SPECIFICATIONS
- SP3 SITE PHOTOGRAPHS
- A1 SITE, UTILITY, GRADING + LANDSCAPE PLAN
- A2 ARCHITECTURAL PLAN / ELEV.
- A3 FOUNDATION, FRAMING PLANS + DTL.
- M1 MECHANICAL
- E1 ELECTRICAL + LIGHTING PLANS
- E2 GROUNDING PLAN AND DETAILS
- E3 GROUNDING + BUILDING ALARM DTL.
- E4 ALARM DETAILS
- E5 FIRE ALARM SYSTEM PLAN + DTL.

Revision	Date	No.

Notice

NO PART OF THESE PLANS AND/OR PROJECT MANUAL MAY BE REPRODUCED, COPIED, STORED IN A RETRIEVAL SYSTEM OR TRANSMITTED IN ANY FORM BY ANY MEANS WITHOUT PRIOR WRITTEN PERMISSION OF MITZEL + SCROGGS ARCHITECTS, INC.

DRAWINGS SHALL NOT BE SCALED.

QUESTIONS ON DIMENSIONS SHALL BE REFERRED TO THE ARCHITECT'S OFFICE.

CONTRACTORS SHALL VERIFY AND COORDINATE ALL DIMENSIONS, DETAILS, AND JOB CONDITIONS.

Zoning & Codes

Zoning: C2-PUD
Parking: provided - 02

Building Code: BOCA 1996
Code: 2C- Unprotected Noncombustible
Construction Type: B-Business
Occupancy Classification: B-Business
Occupancy Load: Business - 2

STANDARD ABBREVIATIONS

Z.L. ANGLE AT BUILDING LINE C.B. CENTER LINE DIA. DIAMETER F.L. FLOW LINE P.L. PROPERTY LINE	A.B. ANCHOR BOLT A/C AIR CONDITIONER ACC AIR COOLED CONDENSER ACCU AIR COOLED CONDENSER UNIT ACOUS. ACOUSTICAL ACT. ACTUAL A.D. AREA DRAIN ADJ. ADJUSTABLE A.F.F. ABOVE FINISH FLOOR A.H.U. AIR HANDLING UNIT ALT. ALTERNATE ALUM. ALUMINUM ANCH. ANCHOR AND. ANDROID APPROX. APPROXIMATE A.P. ACCESS PANEL ARCH. ARCHITECTURAL	DN. DOWN DR. DRAIN D.S. DOWNSPOUT DWG. DRAWING EA. EACH EJ EXPANSION JOINT ELEV. ELEVATION E.M. EMERGENCY EQUIPMENT E.W. EACH WAY E.W.C. ELECTRIC WATER COOLER EXIST. EXISTING EXP. EXTERIOR	MEZZ. MEZZANINE MFR. MANUFACTURER M.H. MAN HOLE M.L. METAL LATH MNL. MINIMUM MIR. MIRROR MSC. MISCELLANEOUS M.O. M.O.S. MOUNTED M.R. MURDER RESISTANT M.S. MOUNTED M.T.D. MOUNTING M.TG. METAL MULL. MULLION	STD. STANDARD S.S.T. STAINLESS STEEL S.S. STEEL STL. STORAGE STRUC. STRUCTURAL SUSP. SUSPENDED SYM. SYMMETRICAL SYN. PLAS. SYNTHETIC PLASTER	T. TREAD TAB TOP AND BOTTOM T.B. TOP OF BEAM T.C. TOP OF CURB/CONCRETE TEL. TELEPHONE TEMP. TEMPERED, TEMPERATURE TERRAZO, TERRACE T.F. TOP OF FOOTING T.F.L. TOP OF FLOOR T&G TONGUE AND GROOVE T.J. TOP OF JOIST T.S. TOP OF SLAB T.W. TOP OF WALL TYP. TYPICAL	U. URNAL UNIT HEATER UTILITY POLE UR. URTHANE	V.B. VINYL BASE V.C.B. VINYL COVERED BASE V.C.T. VINYL COMPOSITION TILE V.F. VINYL FLOORING V.F. VINYL STRAIGHT BASE V.S.B. VERTICAL VEST. VESTIBLE V.P. VACUUM PUMP VTR. VENT THRU ROOF V.V.C. VINYL WALL COVERING VAC. VACUUM	W. WATER W/ WITH W.C. WATER CLOSET W.D. WOOD WOW. WOOD FLOOR W.F.L. WATER HEATER W/O WITHOUT W.P. WATERPROOF W.S.C.T. WANSOCT W.S. WELDED STEEL W.S.P. WASHER STAND PIPE WT. WEIGHT W.W.F. WELODED WIRE FABRIC
---	--	---	--	---	---	--	--	---

MECHANICAL SYMBOLS

XXX A MECHANICAL EQUIPMENT PIECE MARK	CH - CHILLED WATER PIPE
⊖ THERMOSTAT	C - CONDENSER WATER PIPE
⊖ REMOTE SENSOR	D - CONDENSATE DRAIN PIPE
⊖ ALARM HUMIDISTAT - "H HIGH TEMP" & "L LOW TEMP" MOUNT ON INS. BACK BOX AT 54" A.F.F.	RL - REFRIGERANT LIQUID PIPE
⊖ HEAT - COOL, THERMOSTAT MOUNT AT 54" A.F.F.	RS - REFRIGERANT SUCTION PIPE
⊖ ALARM HUMIDISTAT - "H HIGH HUMIDITY" MOUNT AT 54" A.F.F.	HO - REFRIGERANT HOT GAS PIPE
⊖ ALARM HUMIDISTAT - "L LOW HUMIDITY" MOUNT AT 54" A.F.F.	--- FLEXIBLE PIPE COUPLING
⊖ DUCT SIZE IS OUTSIDE SHEET METAL SIZE - 1st NUMBER IS SIDE SHOWN	GLOBE VALVE
⊖ RETURN, EXHAUST, OR OUTSIDE AIR DUCT	GATE VALVE
⊖ SUPPLY DUCT	BALL VALVE
⊖ ELBOW TURNED DOWN (SUPPLY SHOWN)	CHECK VALVE
⊖ ELBOW TURNED UP (RETURN SHOWN)	MOTORIZED VALVE (GATE VALVE SHOWN)
⊖ ELBOW W/TURNING VANES	BUTTERFLY VALVE
⊖ FLEXIBLE DUCT CONNECTION	GAS COCK VALVE
⊖ SUPPLY AIR GRILLE (CEILING OR FLOOR) WITH DISCHARGE DIRECTIONS	BALANCE VALVE & FLOW MEASURING DEVICE
⊖ RETURN AIR REGISTER (CEILING OR FLOOR)	TRIPLE DUTY BALANCE VALVE
⊖ SUPPLY GRILLE (WALL)	SOLENOID VALVE
⊖ RETURN REGISTER (WALL)	HOSE BIBB VALVE
⊖ RIGID DUCT - SUPPLY (SINGLE LINE)	REFRIGERANT SIGHT GLASS
⊖ RIGID DUCT - RETURN (SINGLE LINE)	PIPE REGULATOR
⊖ INSULATED FLEXIBLE DUCT	GLASS STRAINER
⊖ VOLUME CONTROL DAMPER (MANUAL)	FLANGED JOINT
⊖ MOTORIZED DAMPER	PIPE UNION
⊖ FIRE DAMPER	ELBOW TURNED DOWN
⊖ SMOKE DAMPER	ELBOW TURNED UP
⊖ FIRE, SMOKE DAMPER	ELBOW
⊖ NATURAL GAS PIPE	TEE
⊖ LP - LP GAS PIPE	TEE TURNED UP
⊖ SUPPLY PIPE	TEE TURNED DOWN
⊖ RETURN PIPE	CAPPED END
⊖ HEATING WATER PIPE	

PLUMBING SYMBOLS

⊖ FLOOR DRAIN	⊖ CEILING FAN
⊖ HUB DRAIN	⊖ MOTOR
⊖ FLOOR SINK	⊖ GARAGE DOOR OPENER
⊖ FREEZE-PROOF HOSE BIBB	⊖ PANEL BOARD
⊖ VENT-THRU-ROOF	⊖ DISCONNECT SAFETY SWITCH
⊖ VENT PIPING	⊖ MAGNETIC MOTOR STARTER
⊖ LP GAS PIPE	⊖ MANUAL MOTOR STARTER
⊖ NATURAL GAS PIPING	⊖ MANUAL TRANSFER SWITCH
⊖ HOT WATER PIPING (DOMESTIC)	⊖ TIMER CONTROL
⊖ HOT WATER RECIRC. PIPE (DOMESTIC)	⊖ CIRCUIT BREAKER ENCLOSURE
⊖ COLD WATER PIPING (DOMESTIC)	⊖ CHIMES
⊖ SANITARY SEWER	⊖ JUNCTION BOX
⊖ STORM SEWER	⊖ T.V. JACK
⊖ CLEAN OUT - FLOOR	⊖ HOME RUN (NUMBER INDICATES CIRCUIT)
⊖ CLEAN OUT - WALL	⊖ 2 #12 W/#12 GREEN GROUND IN 3/4" CONDUIT OR AS INDICATED
⊖ SHOCK ABSORBERS	⊖ GROUND WIRE
	⊖ NEUTRAL WIRE
	⊖ PHASE WIRE

FIRE PROTECTION SYMBOLS

⊖ FIRE ALARM BELL & STROBE	⊖ EXTERIOR ELEVATION
⊖ FIRE ALARM STATION	⊖ WALL OR BUILDING SECTION
⊖ SPRINKLER	⊖ INTERIOR ELEVATION
⊖ SMOKE DETECTOR (IONZ.)	⊖ NOTE
⊖ SMOKE DETECTOR (PHOTO.)	⊖ DOOR NUMBER
⊖ HEAT DETECTOR	⊖ WINDOW NUMBER
⊖ END OF LINE RESISTOR	⊖ REVISION
⊖ 2-SINGLE CONDUCTOR WIRE	⊖ ROOM NUMBER
	⊖ FLOODED LIGHTS
	⊖ FLOOD LIGHTS W/PROXIMITY SWITCH

STANDARD MATERIAL INDICATIONS

⊖ EARTH	⊖ PLYWOOD (SECTION)
⊖ CRUSHED ROCK	⊖ CUT STONE (SECTION)
⊖ INSULATION (BATT)	⊖ MASONRY
⊖ INSULATION (RIGID)	⊖ STEEL (SECTION)
⊖ HARDWOOD (SECTION)	⊖ CONCRETE (SECTION)
⊖ WOOD FRAMING (SECTION)	⊖ CONCRETE BLOCK (SECTION) (AS SCALE ALLOWS)
⊖ WOOD BLOCKING (SECTION)	⊖ CONCRETE BLOCK (PLAN)
⊖ FINISH WOOD (ELEVATION)	⊖ BRICK (SECTION)

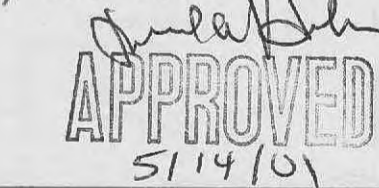
DRAWING SYMBOLS KEY

⊖ DETAIL NUMBER	⊖ DRAWING TITLE
⊖ SCALE	⊖ SHEET NUMBER
⊖ EXTERIOR ELEVATION	⊖ WALL OR BUILDING SECTION
⊖ WALL OR BUILDING SECTION	⊖ INTERIOR ELEVATION
⊖ NOTE	⊖ DOOR NUMBER
⊖ DOOR NUMBER	⊖ WINDOW NUMBER
⊖ WINDOW NUMBER	⊖ REVISION
⊖ REVISION	⊖ ROOM NUMBER
⊖ ROOM NUMBER	

NOTE: ITEMS LISTED IN STANDARD ABBREVIATIONS & SYMBOLS MAY OR MAY NOT BE INCLUDED IN THIS PROJECT



VERIZON CONTACT / ENGINEER
MR. JOHN BRISCH
1312 EAST EMPIRE STREET
BLOOMINGTON, IL 61701
(309) 663-3506



Verizon inc.
**Addition to R.S.U. Building
Hillman Remote**
1235 Bryan Lane
O'Fallon, Missouri 63366

mitzel + scroggs
architects designers planners

2401 East Broadway Bldg A
Columbia, MO 65201-6118
Telephone (573) 449-0951
Fax (573) 449-0921

TITLE SHEET

Scale	AS NOTED
Date	04-23-01
Comm No.	001980
In Charge	DCM
Drawn By	RLC
Checked By	SSB

T1