

Revision	Date	No.

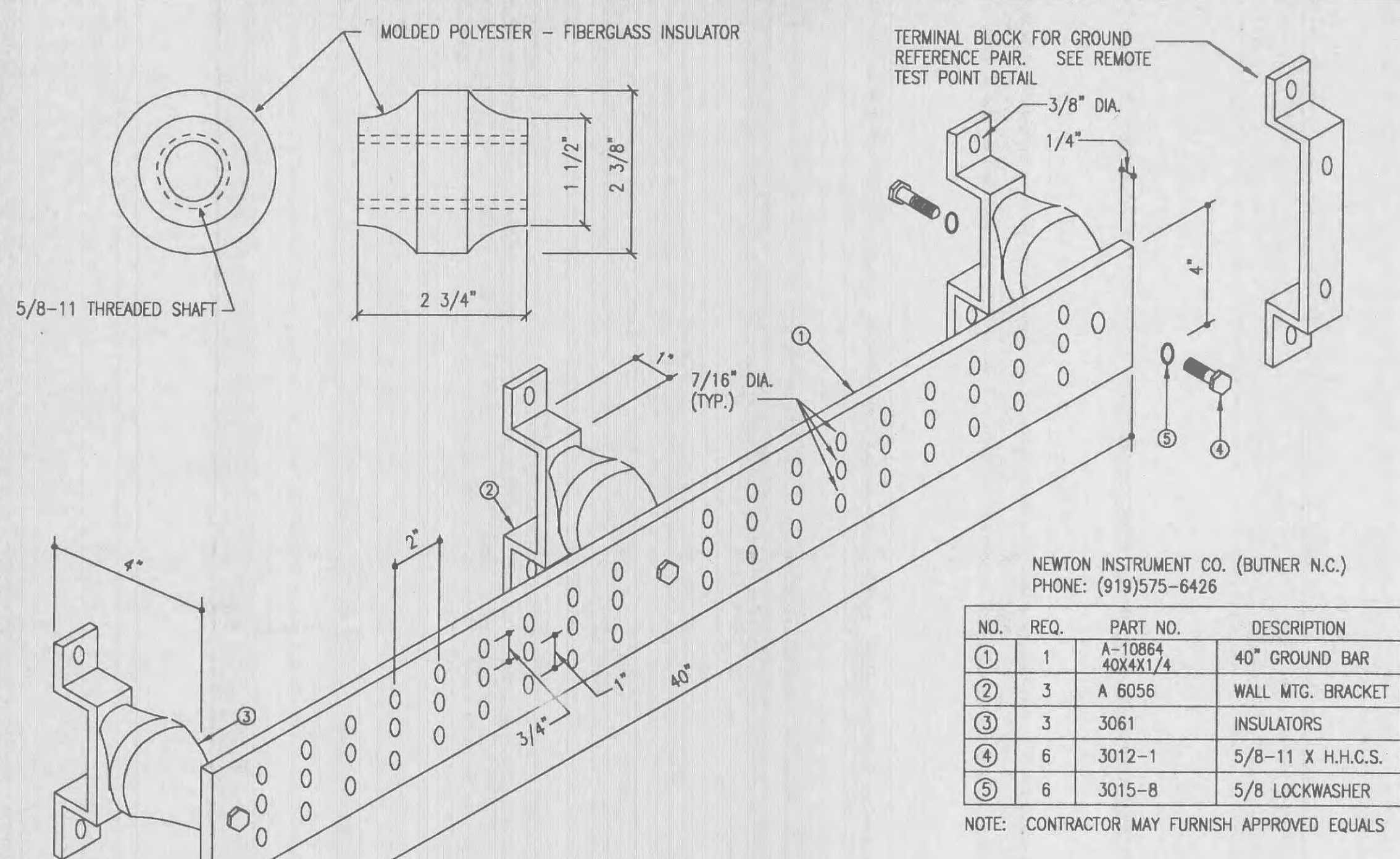
**Notice**

NO PART OF THESE PLANS AND/OR PROJECT MANUAL MAY BE REPRODUCED, COPIED, STORED IN A RETRIEVAL SYSTEM OR TRANSMITTED IN ANY FORM BY ANY MEANS WITHOUT PRIOR WRITTEN PERMISSION OF MITZEL + SCROGGS ARCHITECTS, INC.

DRAWINGS SHALL NOT BE SCALED. QUESTIONS ON DIMENSIONS SHALL BE REFERRED TO THE ARCHITECT'S OFFICE.

CONTRACTORS SHALL VERIFY AND COORDINATE ALL DIMENSIONS, DETAILS, AND JOB CONDITIONS.

NOTE: CONTRACTOR SHALL PROVIDE AN INTERIOR CLEAR, NO BUILD ZONE BETWEEN 8'-0" & 9'-0" A.F.F. (I.E. NO DUCTS, DIFFUSERS, HANGERS OR FIXTURES ETC.)



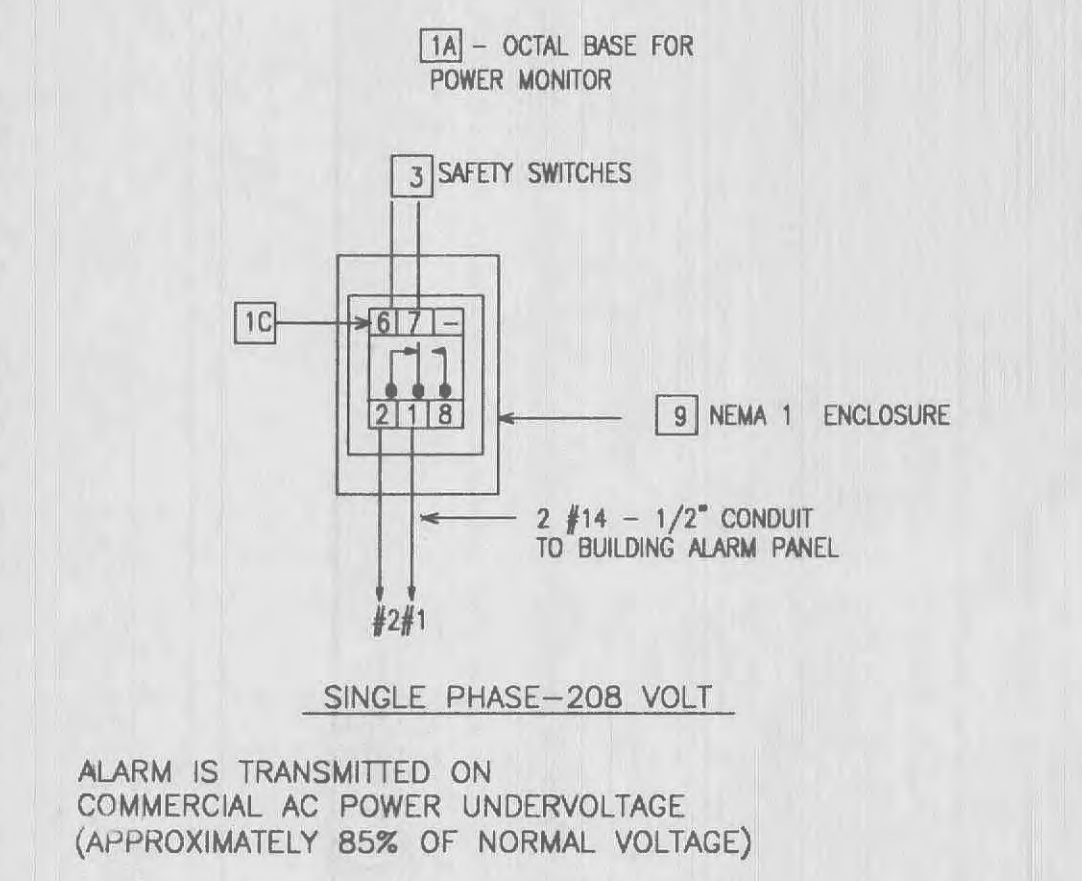
NEWTON INSTRUMENT CO. (BUTNER N.C.)  
PHONE: (919)575-6426

NO.	REQ.	PART NO.	DESCRIPTION
1	1	A-10864 40X4X1/4	40" GROUND BAR
2	3	A 6056	WALL MTG. BRACKET
3	3	3061	INSULATORS
4	6	3012-1	5/8-11 X H.H.C.S.
5	6	3015-B	5/8 LOCKWASHER

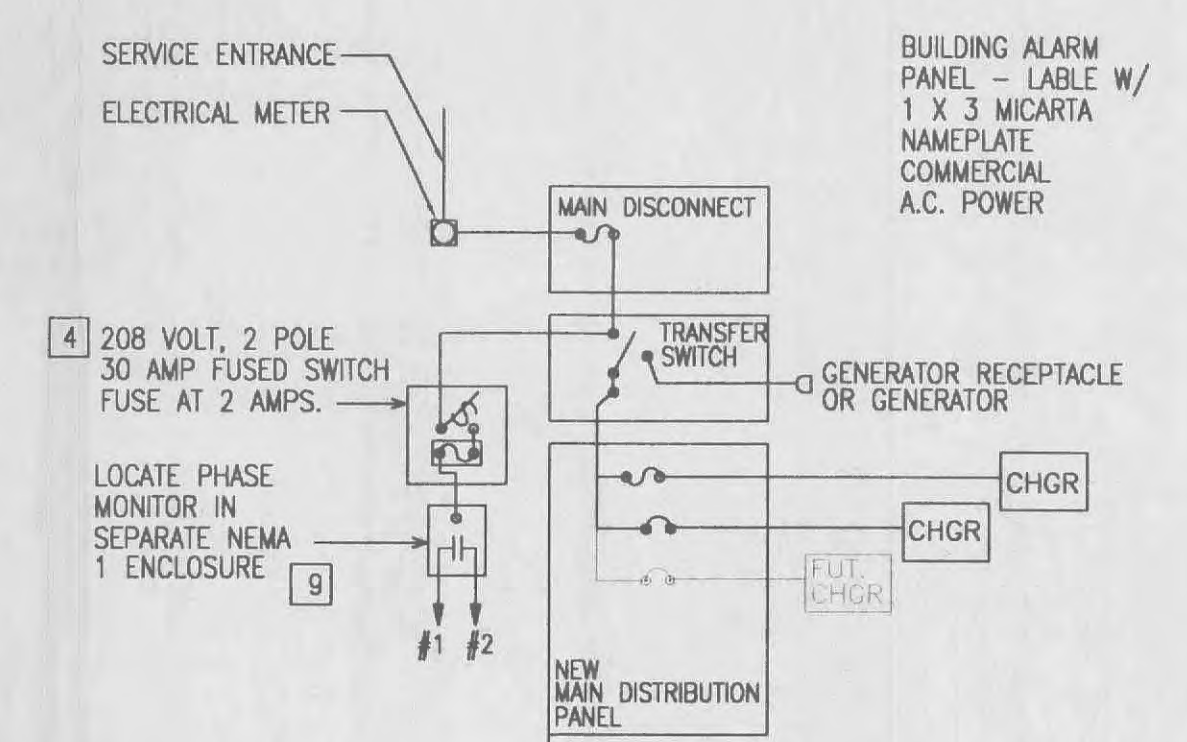
NOTE: CONTRACTOR MAY FURNISH APPROVED EQUALS

- NOTES:
- STANDOFF INSULATORS MUST BE PROVIDED WHEN ZONING THE BAR.
  - MOUNT BAR AT +6"-6" A.F.F.
  - MOUNT TO WALL W/ 6-1/4" BOLTS & MASONRY INSERTS.
  - OBSERVE ZONING CONFIGURATION.
  - CLEAN THE CONTACT SURFACES BETWEEN THE MGB AND CONDUCTOR LUGS. APPLY A THIN COAT OF JOINT COMPOUND (I.E. COPPER COAT) ON MATING SURFACES.
  - ITEMS 2-5 OF THE PARTS LIST ARE INCLUDED IN ASSEMBLY A-10864 (ITEM 1).

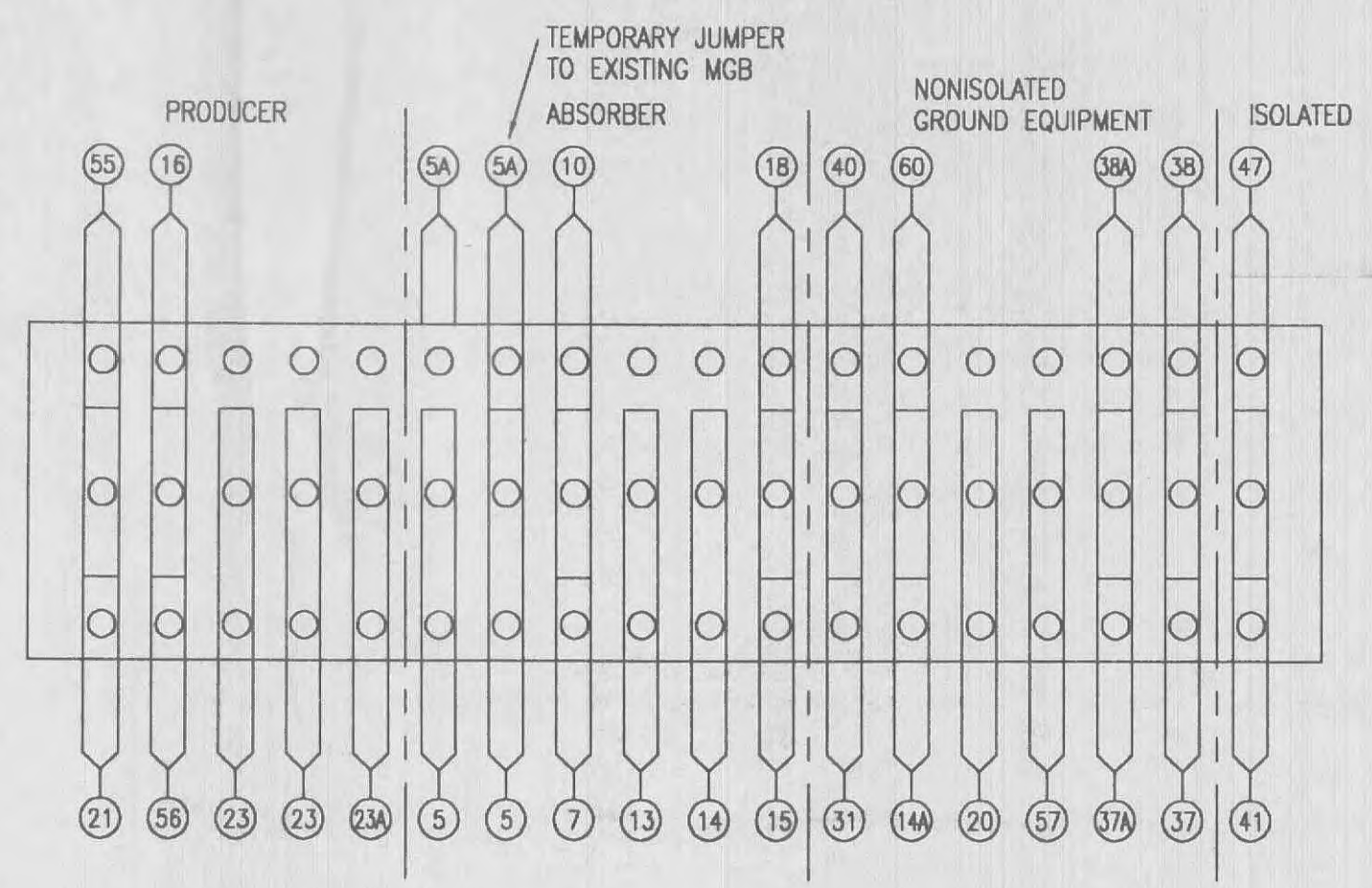
**A**  
**E3** MASTER GROUND BAR DETAIL  
NTS



**D**  
**E3** PHASE MONITOR WIRING  
NTS SHOWN NOT ENERGIZED

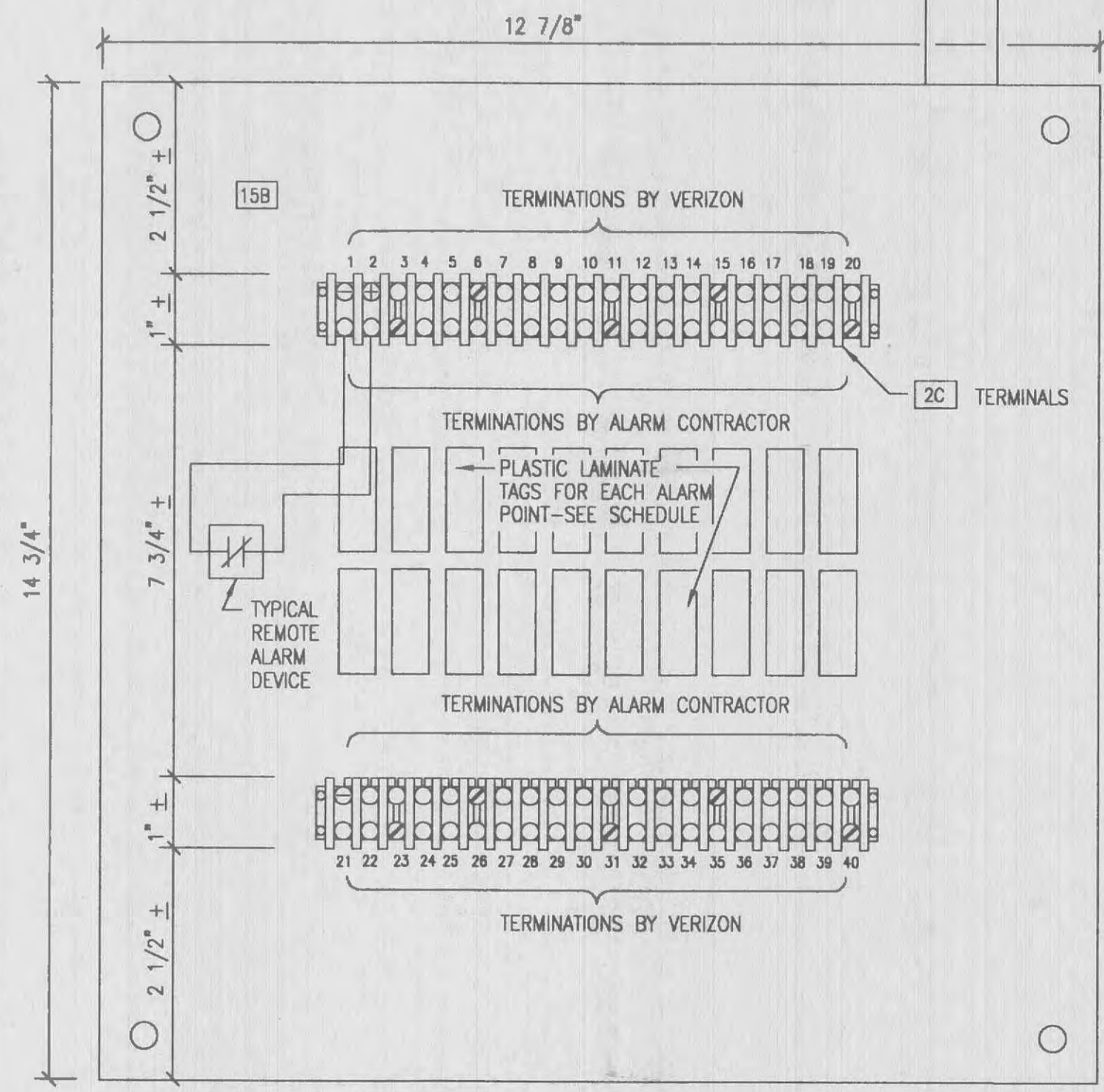
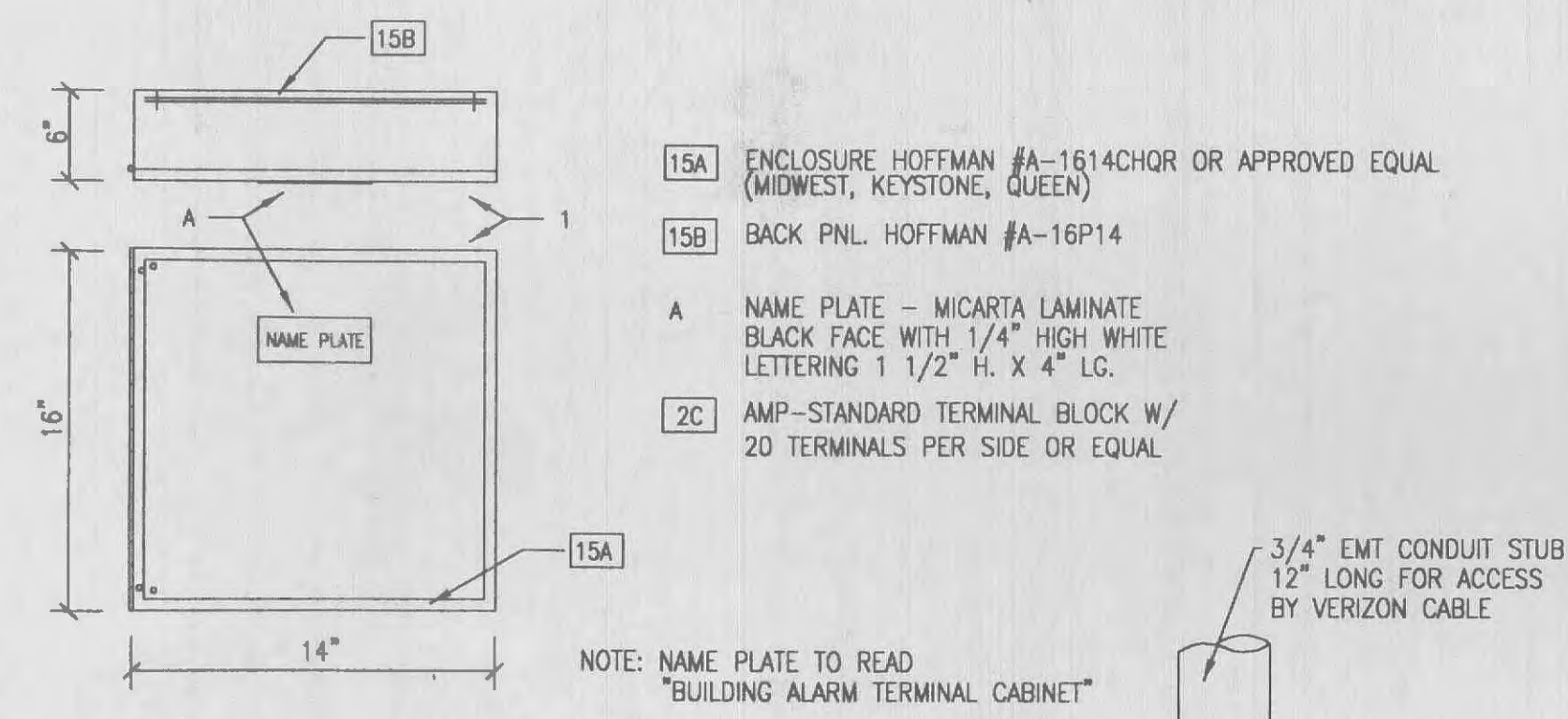


**E**  
**E3** COMMERCIAL POWER FAILURE ALARM CIRCUIT  
NTS



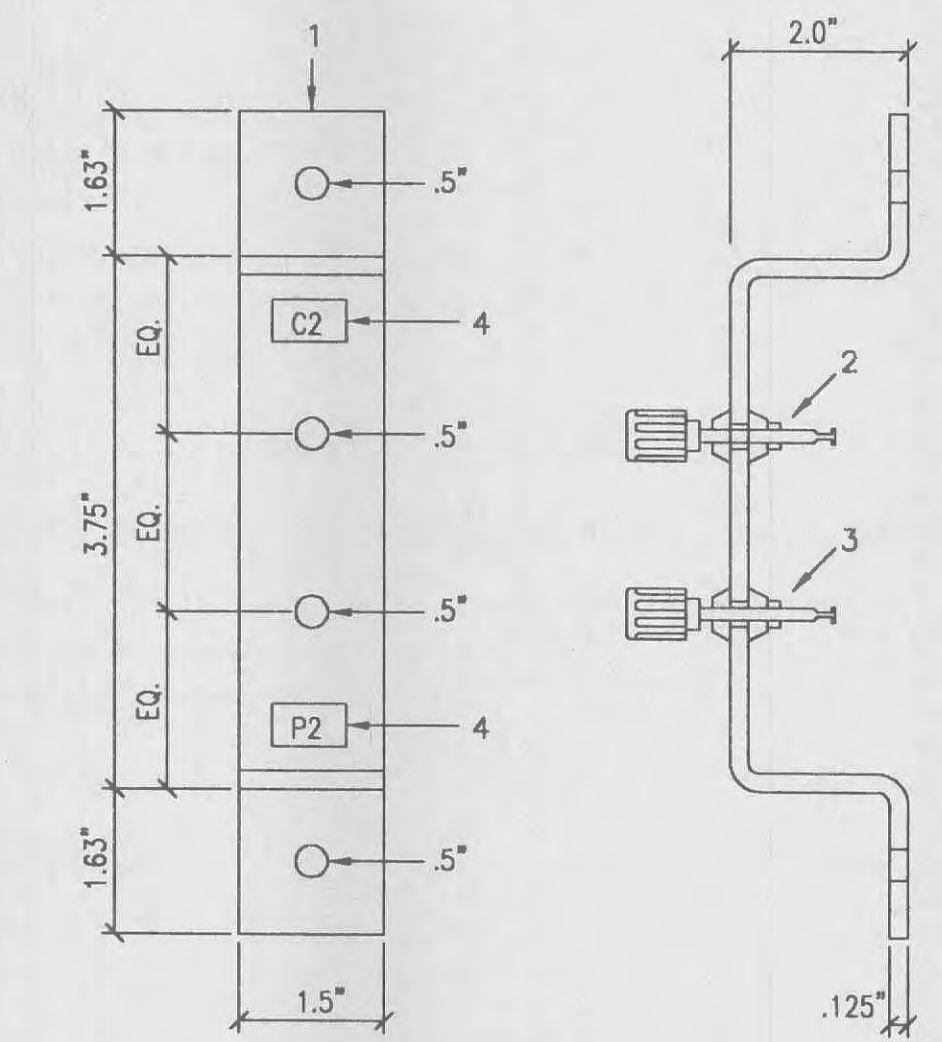
- NOTES:
- THIS DRAWING IS NOT INTENDED TO SPECIFY LEAD DIRECTIONS.
  - THE ZONE SEQUENCE MUST REMAIN AS SHOWN (PAN), HOWEVER, A MIRROR IMAGE CAN BE USED.
  - STANDOFF INSULATORS MUST BE PROVIDED WHEN ZONING THE BAR.

**B**  
**E3** GROUND BAR TERMINAL LANDING DETAIL  
NTS



**F**  
**E3** BUILDING ALARM TERMINAL CABINET  
NTS

- MOUNTING BRACKET, UNISTRUT #P1043A
- TERMINAL POST SUPERIOR ELECTRIC #BP3010B (BLACK)
- TERMINAL POST SUPERIOR ELECTRIC #BP3010R (RED)
- STAMP "C2, P2" INTO METAL - 3/8" HIGH LETTERS



**C**  
**E3** PERMANENT TEST POINT DETAIL  
NTS

**BUILDING ALARM INTENT:**  
THE BASIC INTENT OF EACH BUILDING ALARM IS TO MONITOR VARIOUS INTERNAL CRITICAL FUNCTIONS THROUGHOUT GTE BUILDINGS. NORMALLY OPEN (N.O.) DRY CONTACTS CLOSURE UPON ALARM.

- BUILDING ALARM NOTES:**
- ALL WIRING TO BE #18 THIN STRANDED.
  - ALL WIRING TO BE INSTALLED IN 3/4" ELECTRICAL METALLIC TUBING (EMT) WITH STEEL SET SCREW TYPE APPROVED FITTINGS. COMBINING OF MULTIPLE POINTS IS ACCEPTABLE IF APPLICABLE, (INCLUDING FIRE DETECTION WIRING). HOWEVER, CONDUIT SIZE SHALL BE INCREASED ACCORDINGLY.
  - SUPPORTING OF CONDUIT SHALL BE IN ACCORDANCE WITH THE FOLLOWING STRAPS AND HANGERS. STEEL ONE (1) HOLE CONDUIT STRAPS. STEEL STRUT WITH APPROVED STRAP. STANDOFF HANGER, MINERALIC OR EQUAL. TIE WIRE IS ACCEPTABLE IN CONCEALED AREAS WHERE MANUFACTURED STRAPS ARE NOT PRACTICAL. TIE WIRE WILL NOT BE ALLOWED IN EXPOSED AREAS.
  - WHERE CONDUIT IS NOT ENTERED INTO A CABINET OR ENCLOSURE (EXAMPLE - DOOR ALARM CONTACTS) CONDUIT SHALL BE TERMINATED WITH A CONNECTOR AND A PVC BUSHING.
  - ALL #18 STRANDED WIRE SHALL BE TERMINATED WITH AN APPROVED CRIMP CONNECTION, STAK-KON OR EQUAL IS ACCEPTABLE.
  - ALL ALARM CABINETS OR POINTS OF TERMINATION SHALL HAVE A BLACK MICARTA NAMEPLATE WITH WHITE LETTERS TO DESIGNATE ALARM AND POINT NUMBERS. SIZE TO BE AS SHOWN ON EACH ALARM DETAIL.

ITEM	DESCRIPTION	REMARKS
1A	OCTAL (8 PIN) RELAY SOCKET SCR. TERM MODEL #51x00120	
1B		
1C	TIME MARK MOD AC-260-B-160-250 1/2" POWER MONITOR	TEL. (918) 438-1220
2A	ENCLOSURE - HOFFMAN #A12 N126 NEMA-1	
2B	BACK PNL - HOFFMAN #A12 N12P	
2C	STANDARD TERMINAL BLOCK 20 TERMINAL / SIDE	
3	F.D. FUSED SAFETY SWITCH SQ. D. H221N 30AMP, 2 POLE	
4		
5	TIME DELAY RELAY - 10 SEC. EQUAL TO SQ "D" TYPE JCK-11 W/BASE SOCKET B501 NR51	
6	HVAC FAILURE ALARM - HAVEL BROS. HV1100	TEL (219) 487-7900
7	SUMP ALARM - STANDARD TEL DESIGN MODEL #2010	TEL (503) 692-4165
8	HONEYWELL THERMOSTAT #1874A1176	HIGH AND LOW TEMPERATURE SENSOR FOR PHASE MONITOR
9	6 X 8 X 6 NEMA1, ENCLOSURE G/W BACK PANEL & SCREW COVER	
10	MAGNETIC - EDWARDS #61	DOOR SWITCH
11	HONEYWELL H-600-A-1014 HUMIDISTAT - HIGH	HIGH HUMIDITY SENSOR
12	SAME AS 11 EXCEPT MAKE ON FALL	LOW HUMIDITY SENSOR
13	339-120-180 TIME MARK CORP. SIGNAL LINE ON/OFF DELAY RELAY	TEL (918) 438-1220
14	STANDARD TERMINAL BLOCK 12 TERMINAL PER SIDE	
15A	ENCLOSURE HOFFMAN #A-1614 CH QR	BUILDING ALARM TERMINAL CABINET
15B	BACK PNL - HOFFMAN #A16P14	BUILDING ALARM TERMINAL CABINET

**Verizon inc.**  
Addition to R.S.U. Building Hillman Remote  
1235 Bryan Lane  
O'Fallon, Missouri 63366

**mitzel + scroggs**  
architects designers planners  
2401 East Broadway Bldg A  
Columbia, MO 65201-6118  
Telephone (573) 449-0951  
Fax (573) 449-0921

**GROUNDING AND ALARM DETAILS**  
Scale **A8 NOTED**  
Date **04-23-01** Comm No. **001998**  
In Charge **DCM**  
Drawn By **RLC**  
Checked By **888**