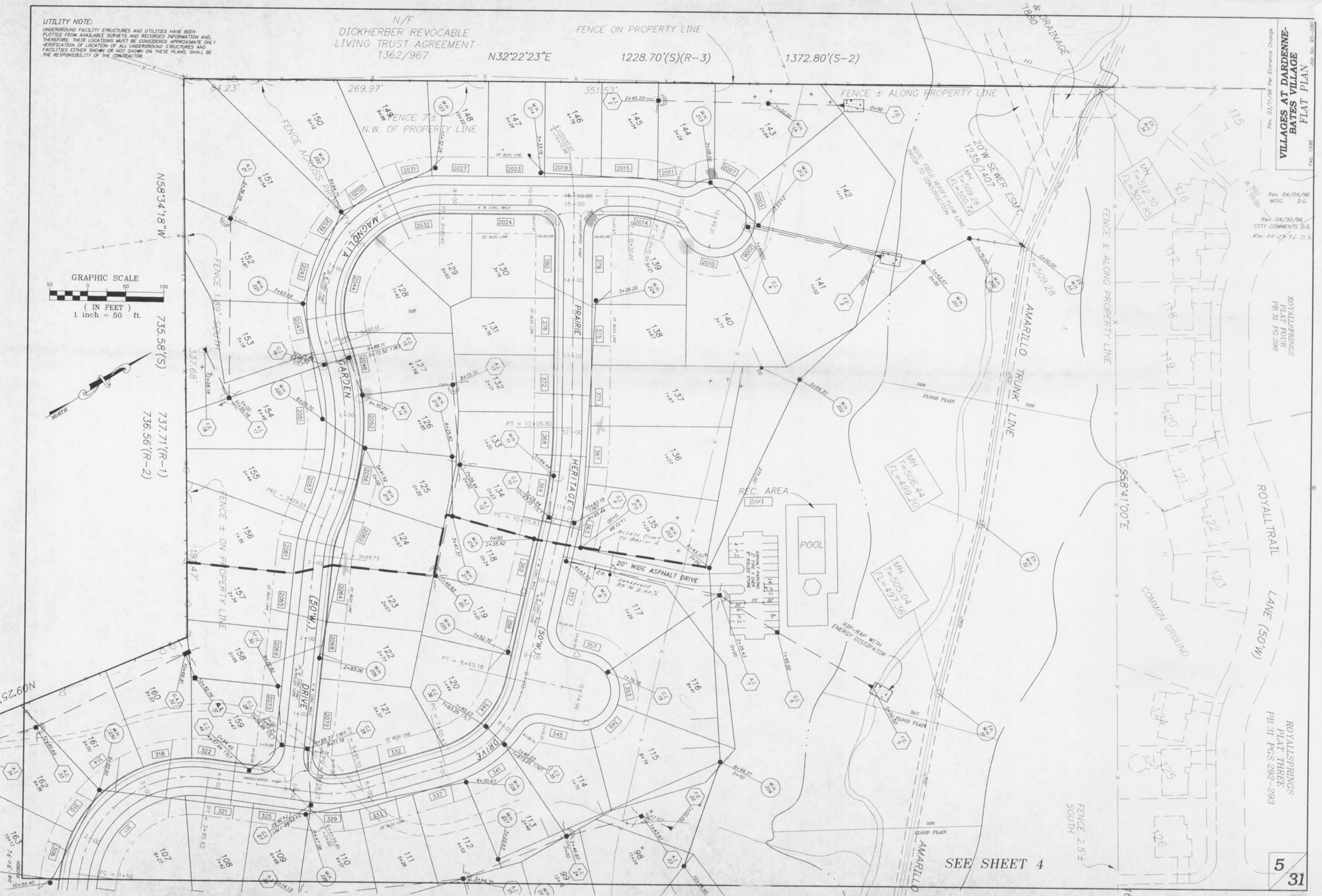
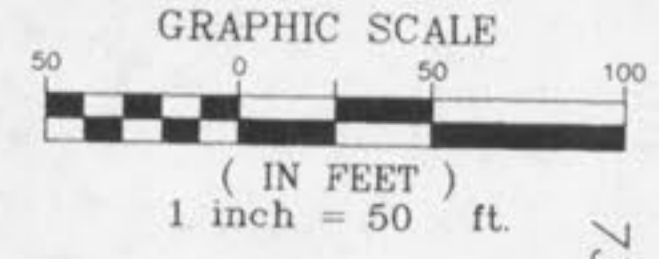


UTILITY NOTE:
 UNDERGROUND FACILITY STRUCTURES AND UTILITIES HAVE BEEN PLOTTED FROM AVAILABLE SURVEYS AND RECORDED INFORMATION AND, THEREFORE, THEIR LOCATIONS MUST BE CONSIDERED APPROXIMATE ONLY. VERIFICATION OF LOCATION OF ALL UNDERGROUND STRUCTURES AND FACILITIES EITHER SHOWN OR NOT SHOWN ON THESE PLANS, SHALL BE THE RESPONSIBILITY OF THE CONTRACTOR.

N/F
 DICKHERBER REVOCABLE
 LIVING TRUST AGREEMENT
 1362/967
 N32°22'23"E 1228.70'(S)(R-3) 1372.80'(S-2)

VILLAGES AT DARDENNE-
 BATES VILLAGE
 FLAT PLAN
 Rev. 03/11/96 Per Entrance Change
 Rev. 04/04/96 MISC. D.G.
 Rev. 04/30/96 CITY COMMENTS D.G.
 Rev. 05-25-96 D.G.
 ROTALSPRINGS
 FLAT FOUR
 PB-31 PG-396
 ROTALSPRINGS
 FLAT THREE
 PB-31 PGS-292-293
 5
 31



SEE SHEET 4

5
 31