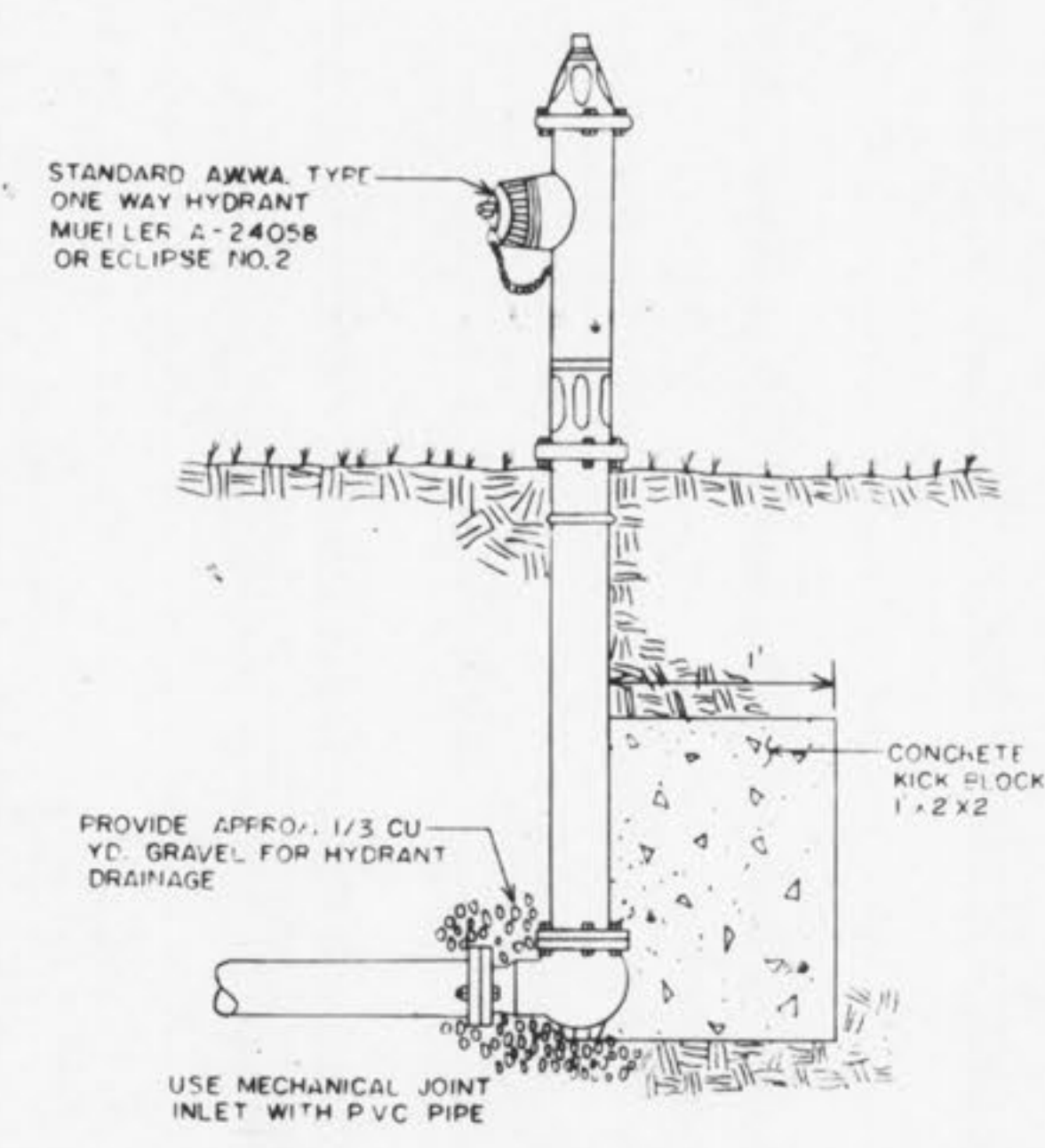
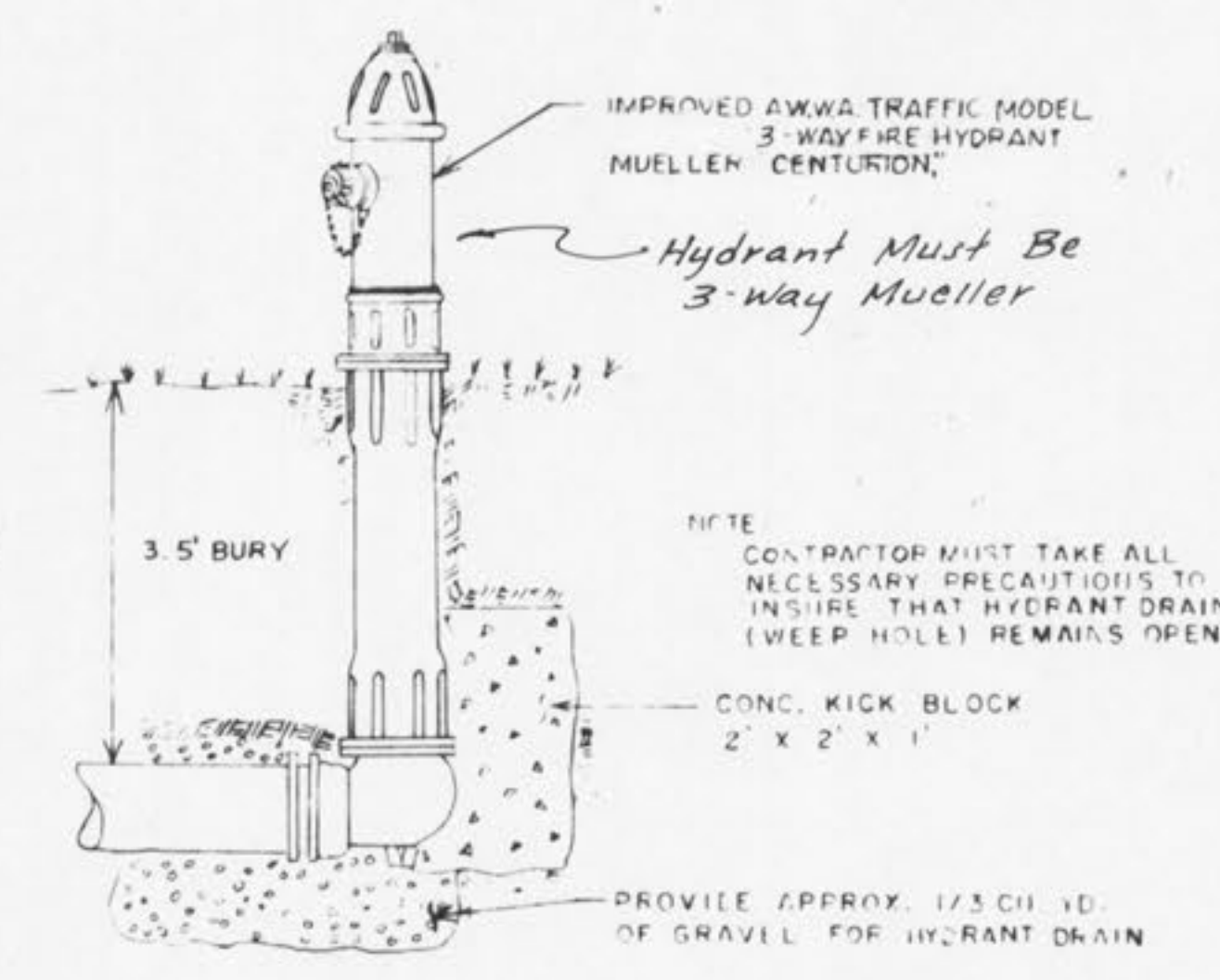


**GATE VALVE W / THRUST BLOCK DETAIL**  
NO SCALE

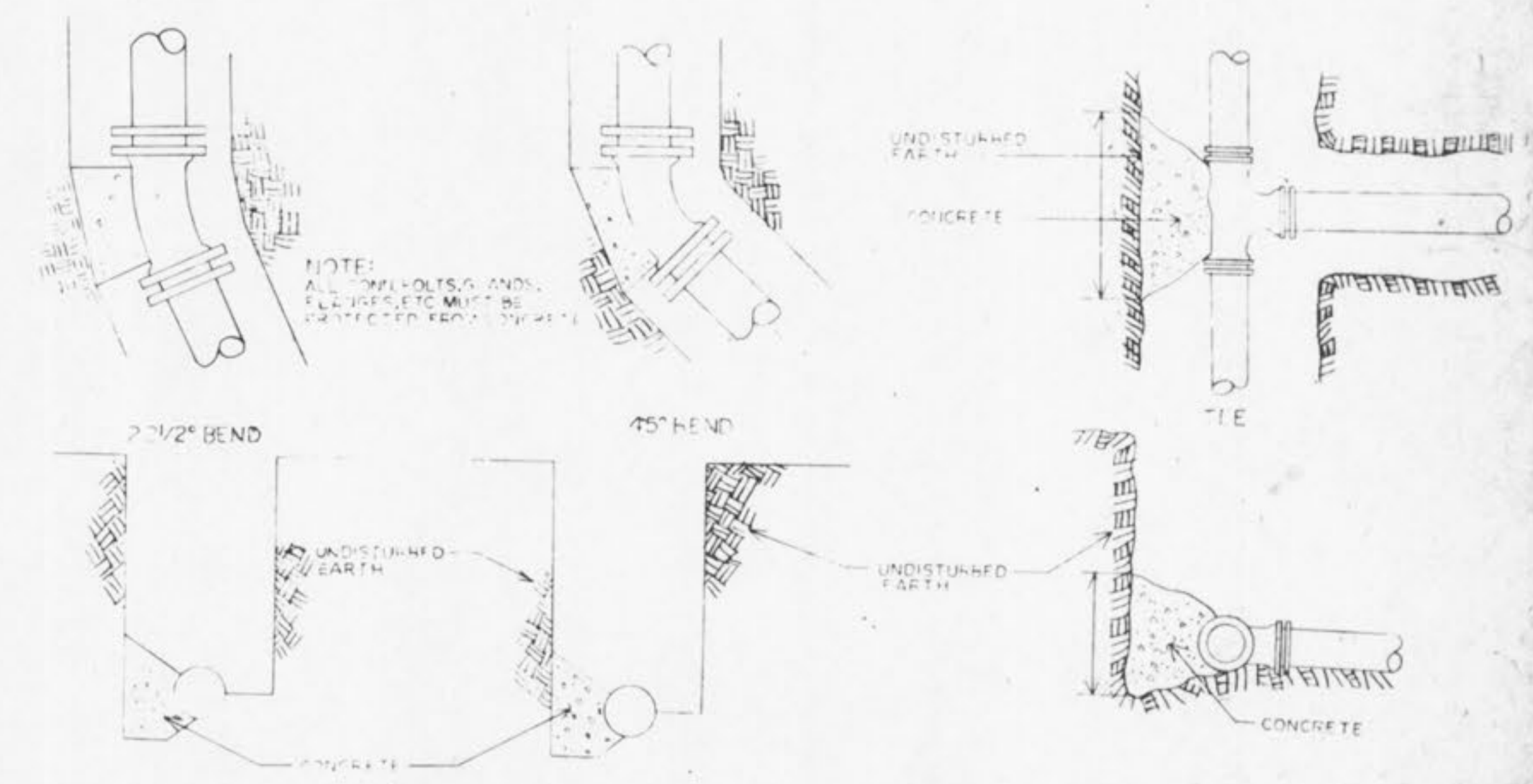
**TYPICAL WATER MAIN INSTALLATION DETAILS**  
NO SCALE



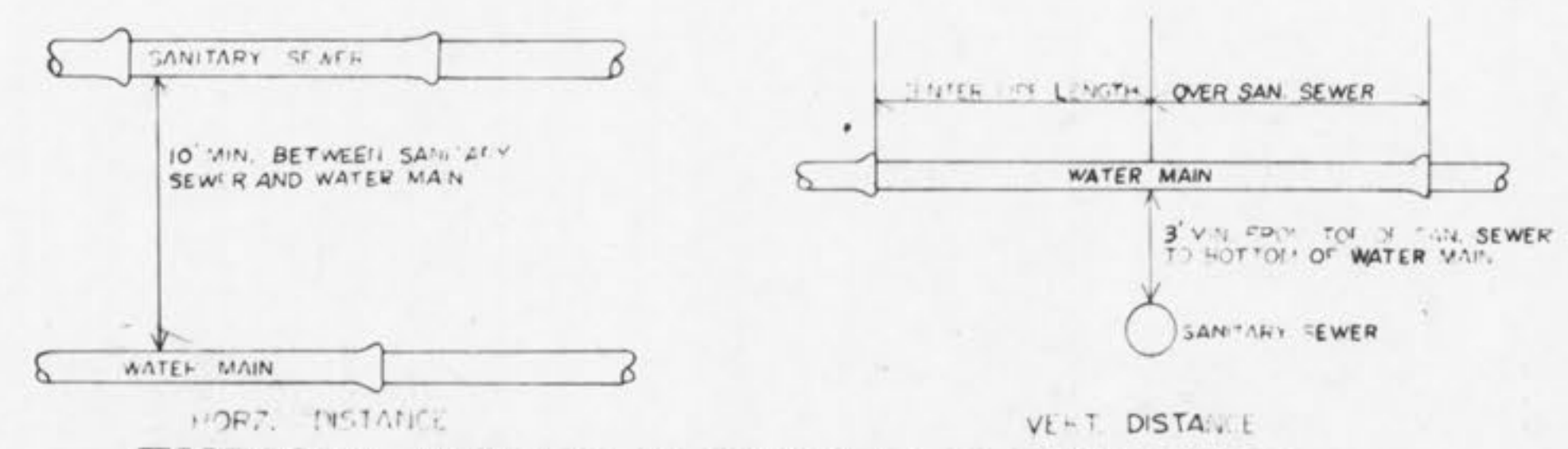
**FLUSHING HYDRANT**  
NO SCALE



**FIRE HYDRANT INSTALLATION DETAIL**  
NO SCALE



**TYPICAL THRUST BLOCK DETAIL**  
NO SCALE



**TYPICAL WATER & SEWER SEPARATION**  
NO SCALE

MAIN SIZE I.D. IN INCHES	MIN. THRUST BLOCK BEARING DIMENSIONS TO BEAR AGAINST UNDISTURBED EARTH				
	45° BEND	22 1/2° BEND	TEE	VALVE	CROSS
2"	1.5' x 1'	1.5' x 1'	1.5' x 1'	1.5' x 1'	1.5' x 1'
4"	1' x 1'	1' x 1'	2' x 1'	2' x 1'	1' x 1'
6"	1.5' x 1'	1' x 1'	2' x 1'	2' x 1'	1' x 1'
8"	2' x 1'	1' x 1'	2' x 2.5'	2' x 2'	1' x 1.5'
10"	2' x 2.5'	1.5' x 2'	2' x 3.5'	2' x 3'	2' x 2'
12"	2' x 3.5'	1.5' x 2.5'	3' x 3.5'	3' x 3'	2' x 3'
16"	3' x 4'	2' x 3'	4' x 4.5'	3' x 4.5'	3' x 3.5'

Rev. 10-24-95 - Claw Eddy Hydrant

ST. CHARLES COUNTY  
PUBLIC WATER SUPPLY DISTRICT  
NO. 2

Designed by: COCHRAN ENGINEERING COMPANY  
WASHINGTON, MISSOURI

APPROVED:

**TYPICAL WATER INSTALLATION DETAILS**

DATE	SCALE	SHEET NO.	REVISIONS
FEB. 88	AS SHOWN		