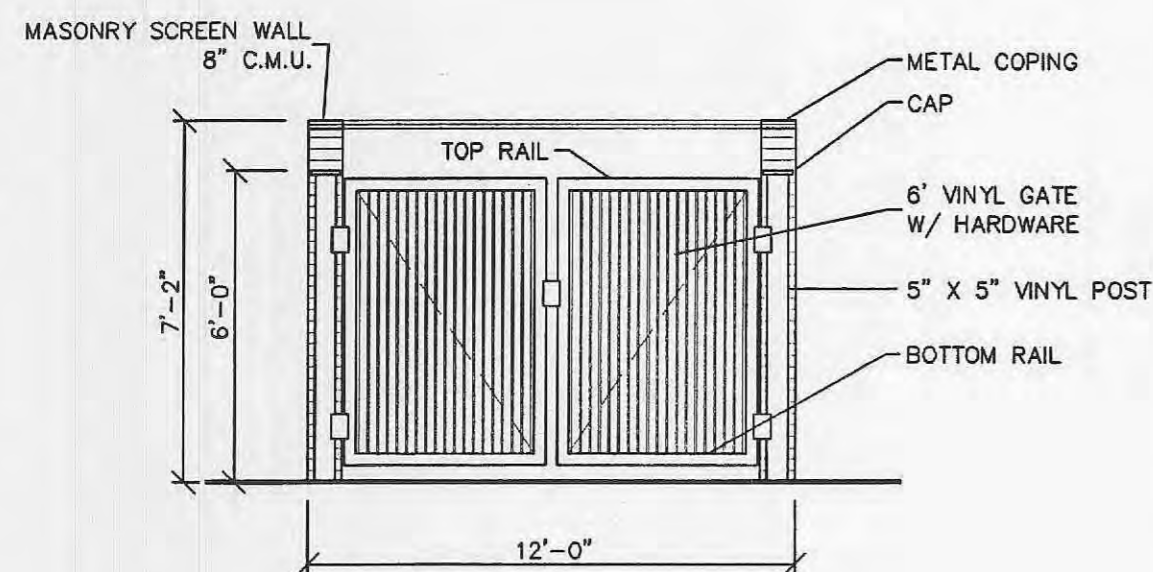
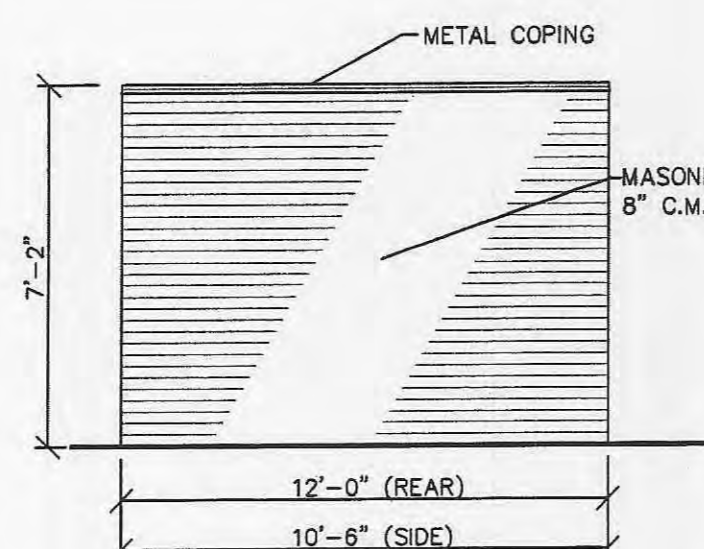


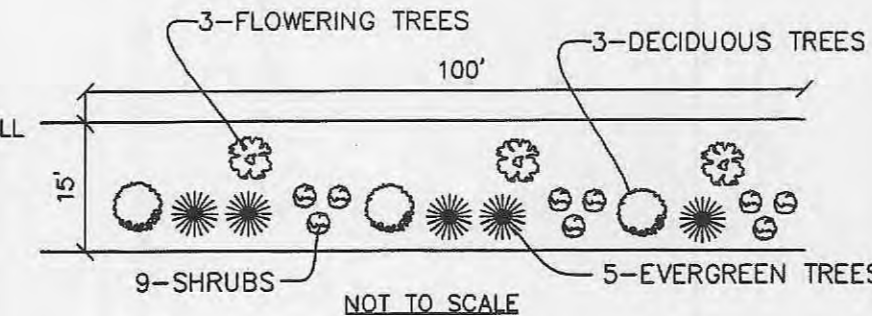
PLAN AT TRASH ENCLOSURE GATE



ELEVATION AT TRASH ENCLOSURE GATE



REAR AND SIDE VIEW OF TRASH ENCLOSURE

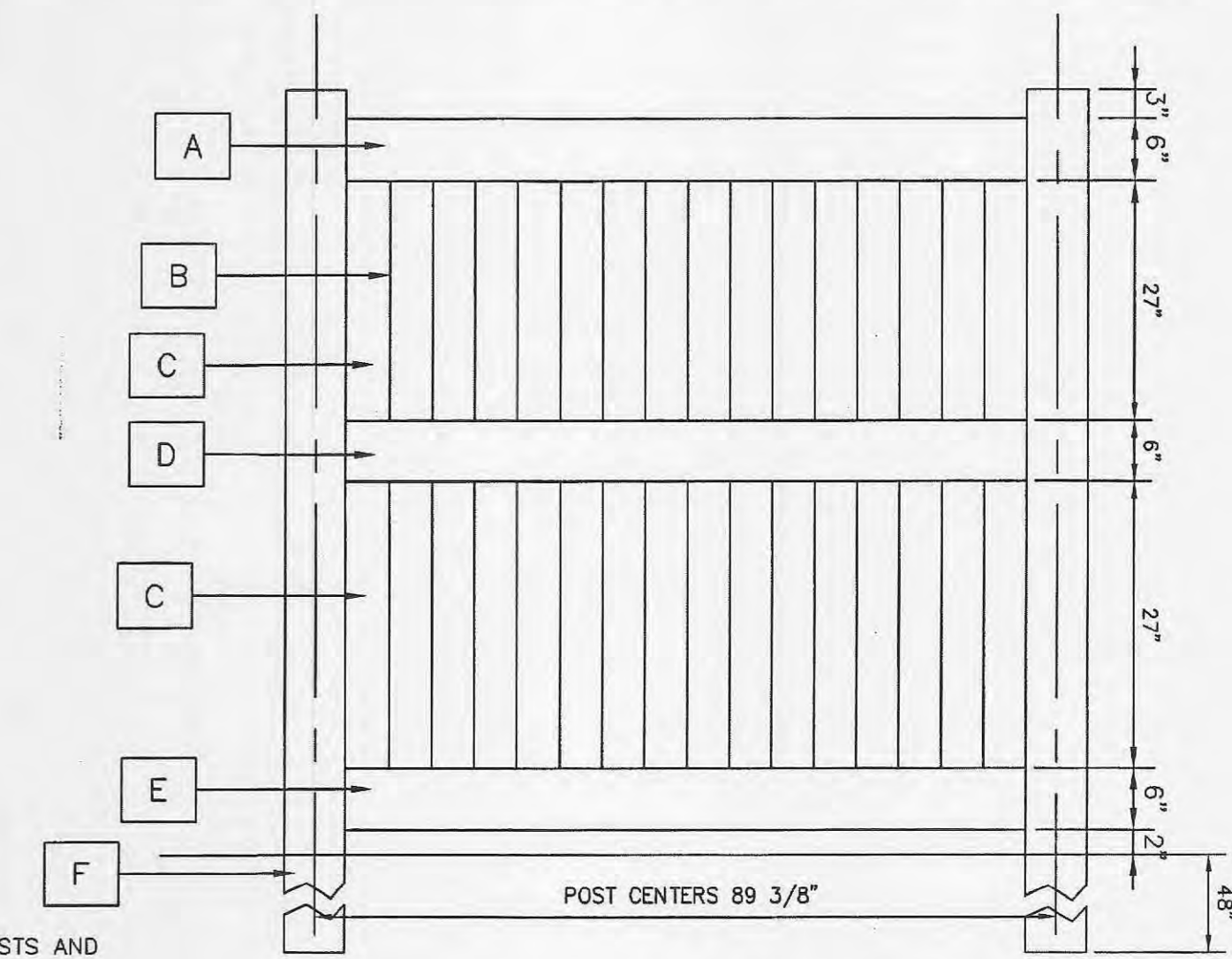


LANDSCAPE LEGEND FOR 15' WIDE BUFFER

- EVERGREEN TREE (6' MIN. HT.) WHITE PINES/AUSTRIANS
- DECIDUOUS TREE (2" MIN. CALIPER) PIN OAKS, ASH, SWEET GUM
- FLOWERING TREES (2 1/2" MIN CALIPER) BRADFORD PEAR, DOGWOOD, RED BUD
- SHRUB (18" MIN. DIAMETER)

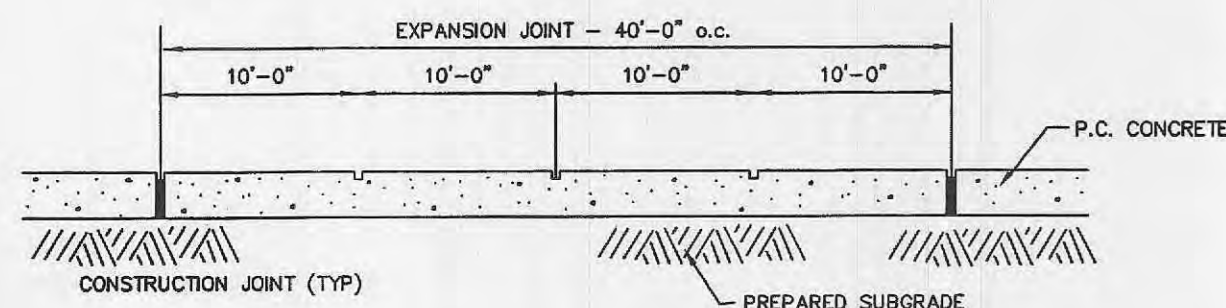
TYPICAL LANDSCAPE BUFFER

WITHIN "NO GRADE ZONE" AREAS WHERE NO VEGETATION OR TREE MASS EXISTS AND WHERE GRADING MUST OCCUR FOR UTILITY PURPOSES. THE DEVELOPER SHALL PROVIDE FOR EVERY 100 FEET OF PROPERTY WITHIN THE FIFTEEN (15) FOOT "NO GRADE ZONE" NINE (9) SHRUBS, THREE (3) FLOWERING TREES, THREE (3) DECIDUOUS TREES, AND FIVE (5) EVERGREEN TREES.

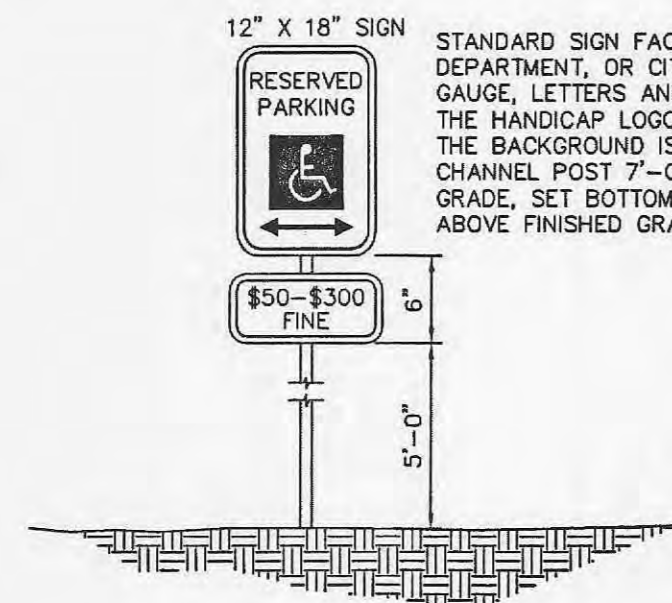


6' HIGH VINYL PRIVACY FENCE

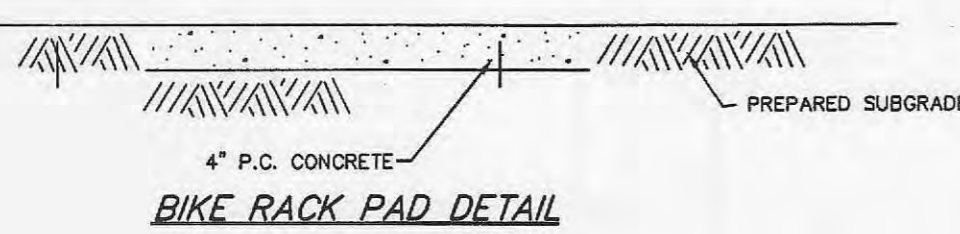
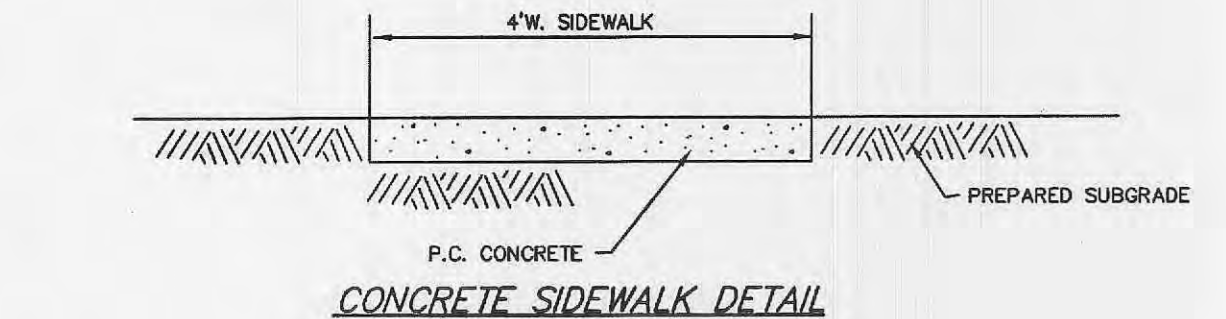
- A** TOP RAIL 2" X 6" X 88" RIBBED CHANNELLED TO ACCEPT PICKETS INCLUDES REINFORCING CHANNEL
- B** PICKET SPACING NONE
- C** PICKETS 28 PIECES OF 7/8" X 6" X 30-1/2"
- D** MIDDLE RAIL 2" X 6" X 88" RIBBED CHANNELLED TO ACCEPT PICKETS INCLUDES REINFORCING CHANNEL
- E** BOTTOM RAIL 2" X 6" X 88" RIBBED CHANNELLED TO ACCEPT PICKETS INCLUDES REINFORCING CHANNEL
- F** POST 6" X 6" X 120" FOR IN GROUND INSTALLATION 6" X 6" X 84" FOR ABOVE GROUND INSTALLATION



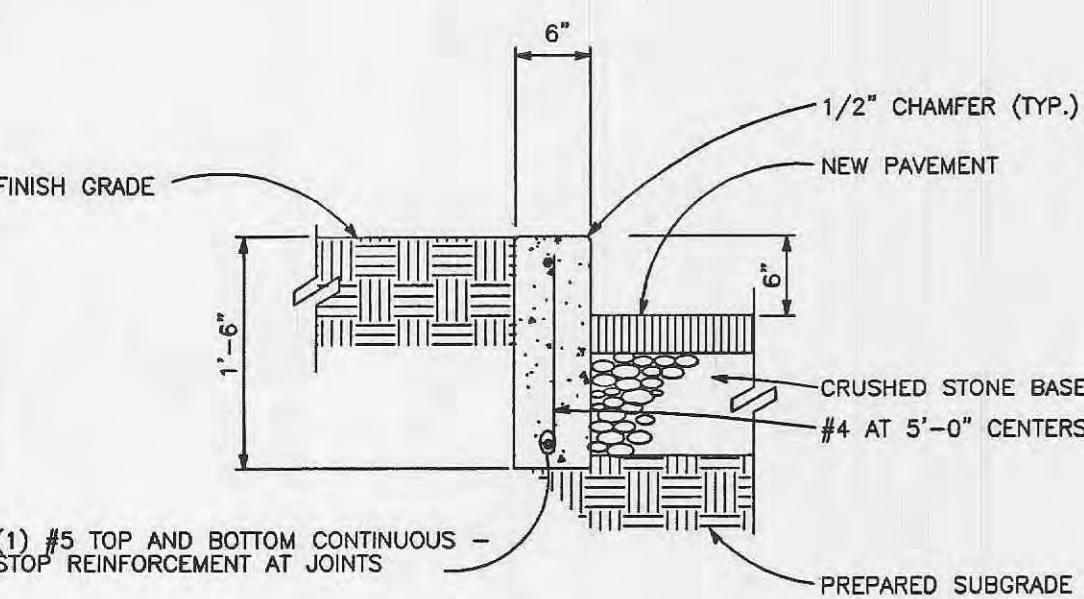
CONCRETE SIDEWALK DETAIL



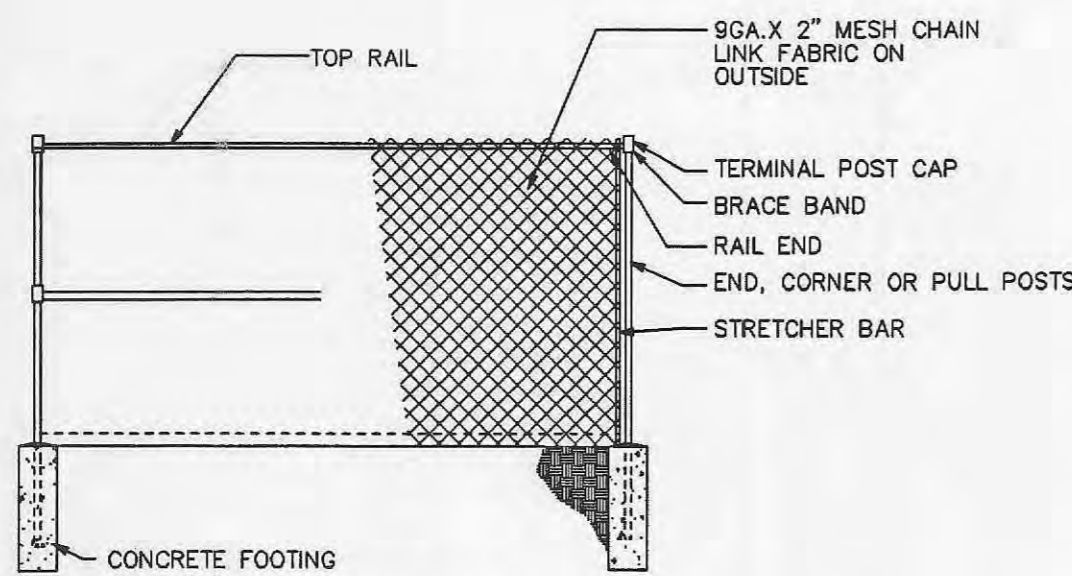
HANDICAP PARKING SIGN



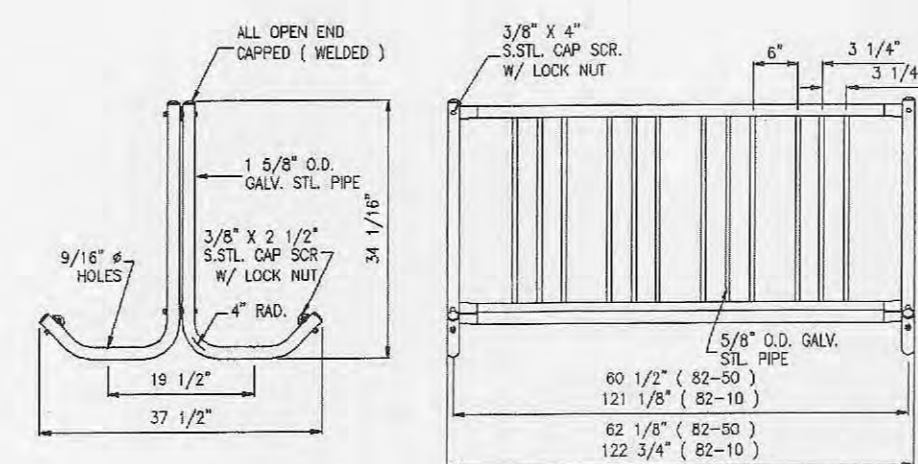
BIKE RACK PAD DETAIL



CONCRETE CURB DETAIL



6'H. CHAINLINK FENCE ELEVATION

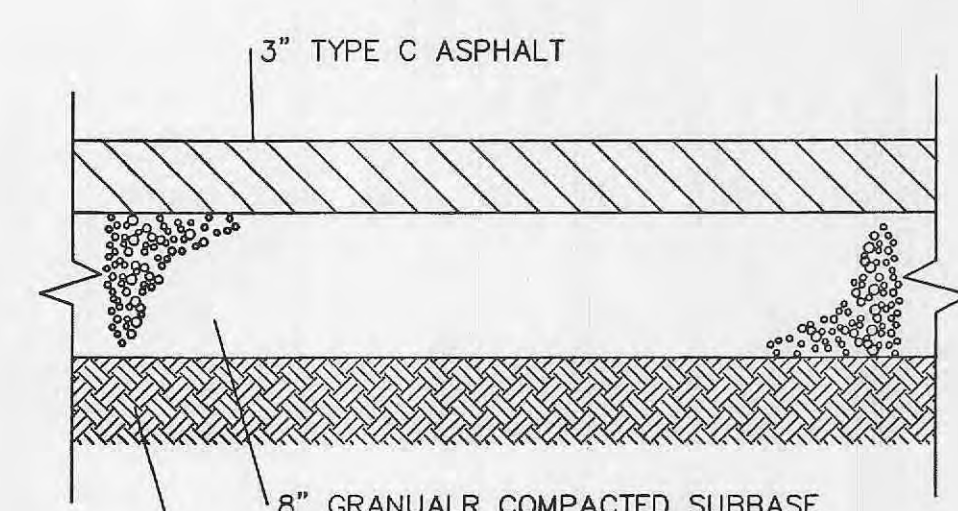


ACP International
Style: Crystal Cap
www.acpinternational.com

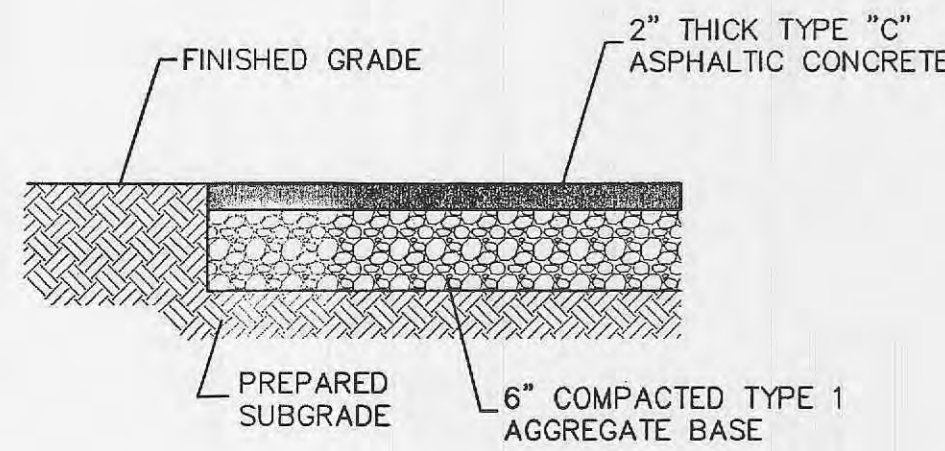
DAS Manufacturing, Inc.
Style: Standard Style
www.dasmanufacturing.com

The City will allow these storm sewer markers and adhesive procedures as shown on these two websites. Other markers and adhesive procedures may be allowed if approved by the City of O'Fallon.

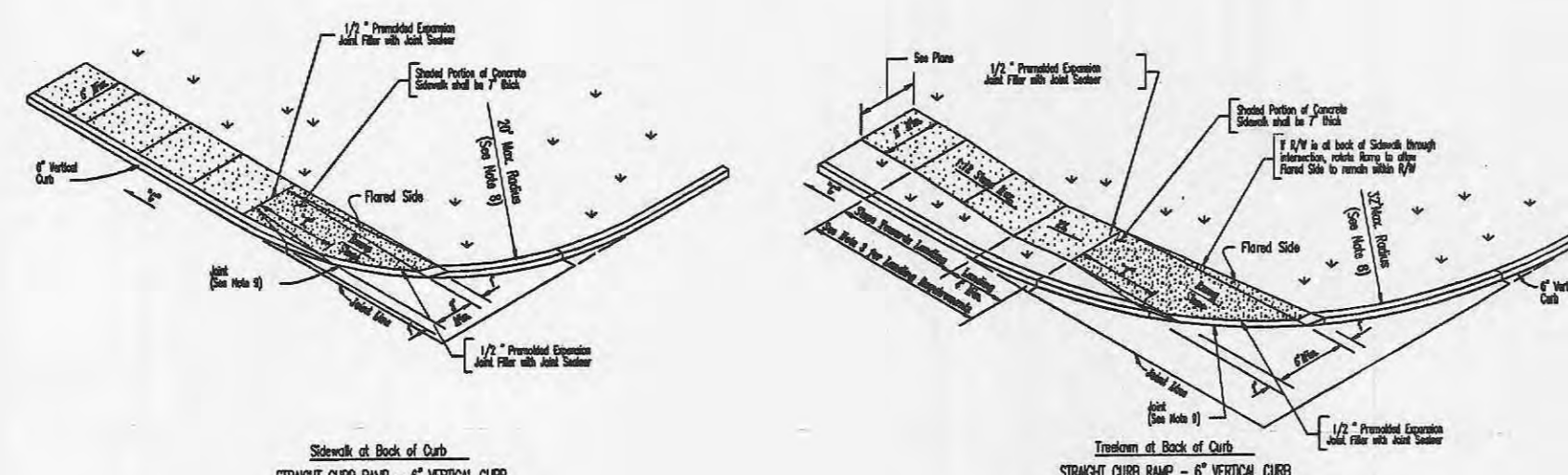
STORM SEWER MARKING DETAIL



TYPICAL PAVEMENT SECTION (FOR RECREATION AREA)



MULTIPURPOSE COURT DETAIL



TYPE 1 AND TYPE 2 CURB RAMPS	
GRADE	MIN. LENGTH OF RAMP (L.F.)
ALWAYS 0%	5
NEGATIVE (%) VALUES	
0 to -1%	5
+1.01 to -2%	6
+2.01 to -3%	10
+3.01 to +4%	12
GREATER THAN +4%	15

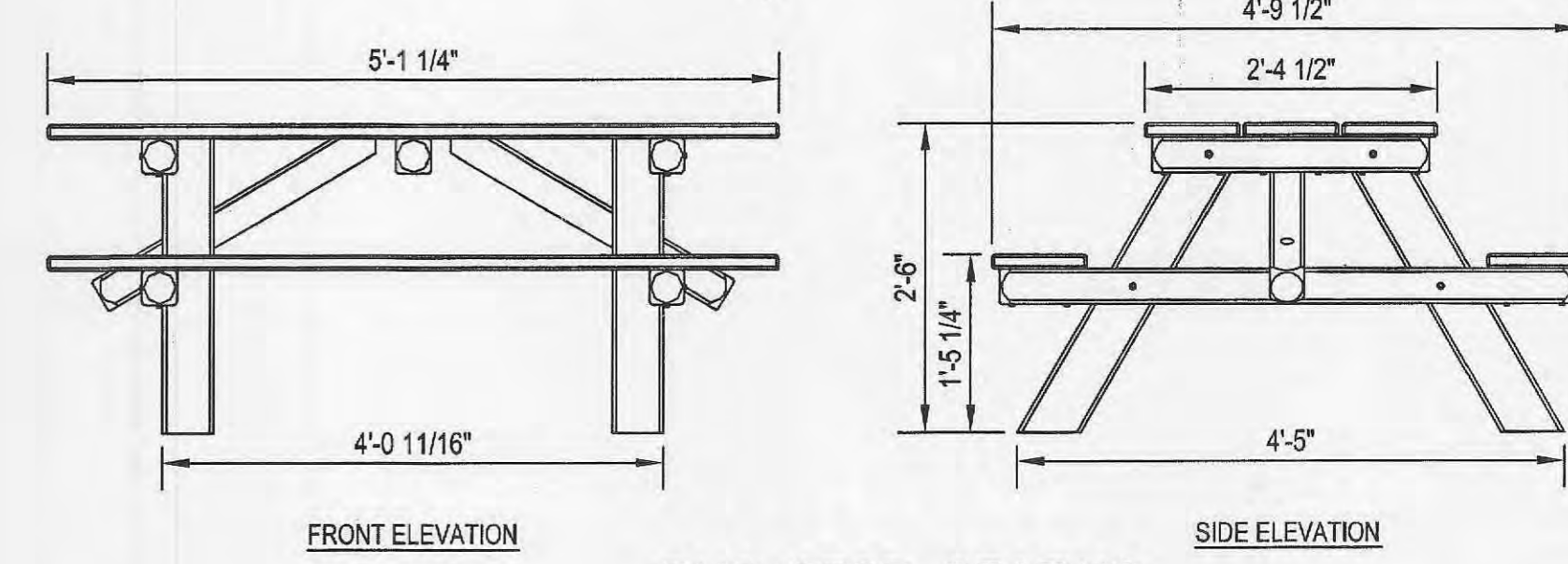
NOTE: Positive (+) - Proceeding away from intersection and up a grade.
Negative (-) - Proceeding away from intersection and down a grade.

TYPE 3 CURB RAMP	
GRADE	MIN. LENGTH OF RAMP (L.F.)
ALWAYS 0%	3
NEGATIVE (%) VALUES	
0 to +2%	4
+2.01 to +3%	5
+3.01 to +4%	6
+4.01 to +5%	8
+5.01 to +6%	11
GREATER THAN +6%	15

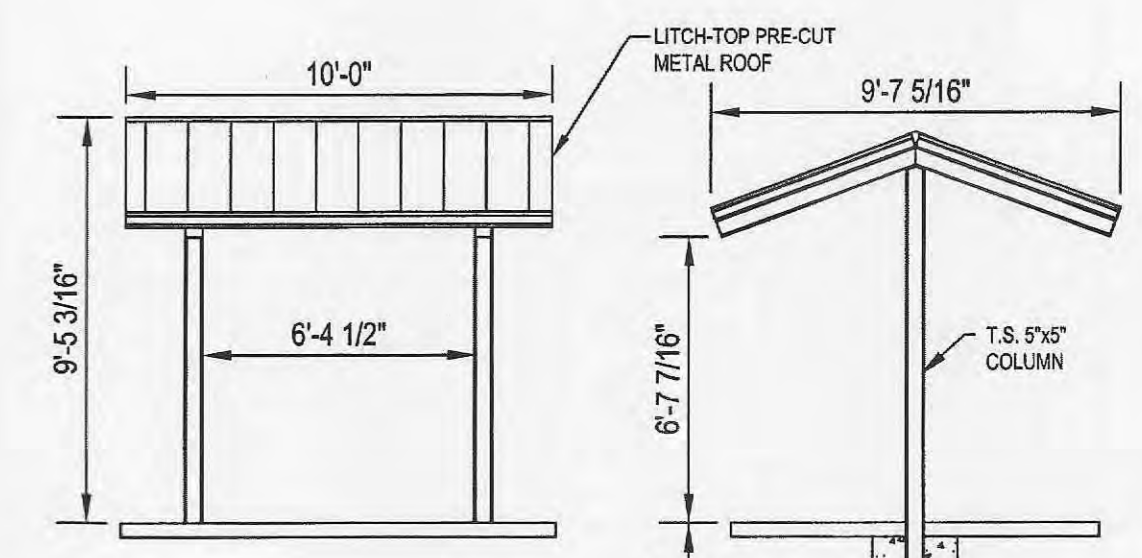
NOTE: Positive (+) - Proceeding away from intersection and up a grade.
Negative (-) - Proceeding away from intersection and down a grade.

- GENERAL NOTES**
- Do not scale drawing. Follow dimensions.
 - Materials and methods shall conform with the latest specifications of the Missouri Department of Transportation (MoDOT) and the American Society of Civil Engineers (ASCE).
 - Provide a finished surface on the top of the curb ramp. The surface shall be smooth and free of any protrusions. The surface shall be finished with a 1/2" x 1/2" x 1/2" aggregate concrete or equivalent material. The surface shall be finished with a 1/2" x 1/2" x 1/2" aggregate concrete or equivalent material. The surface shall be finished with a 1/2" x 1/2" x 1/2" aggregate concrete or equivalent material.
 - Maximum sidewalk cross slope 0.02%/ft.
 - Where curb ramp meets pavement, balance will not be required.
 - Construct a drainage system when the maximum cross slope exceeds 0.02%/ft. to prevent water from collecting.
 - If possible, concrete curb is constructed, utilize a minimum 1/2" x 1/2" x 1/2" aggregate concrete or equivalent material. The surface shall be finished with a 1/2" x 1/2" x 1/2" aggregate concrete or equivalent material.
 - For concrete curb ramp, placement, form, and finish shall be in accordance with the Missouri Department of Transportation (MoDOT) and the American Society of Civil Engineers (ASCE).
 - All curb ramps shall have a drainage system complying with the Missouri Department of Transportation (MoDOT) and the American Society of Civil Engineers (ASCE).

SANT CHARLES COUNTY
HIGHWAY DEPARTMENT
ST. CHARLES, MISSOURI
PAVEMENT CONSTRUCTION DETAILS
CONCRETE SIDEWALK
AND CURB RAMPS



BUS STOP SEATING



COVERED SEATING AREA

ISSUE	REMARKS/DATE
1	09-23-05 FIRST SUBMITTAL
2	11-22-05 REVISED PER CITY COMMENTS
3	01-06-06 REVISED PER CITY COMMENTS
4	07-30-06 REVISED PER CITY COMMENTS

PREPARED FOR:
SPRINGHURST, L.L.C.
5091 NEW BAUMGARTNER ROAD
ST. LOUIS, MISSOURI 63129
(314) 487-6717



PREPARED BY:
THE STERLING CO.
ENGINEERS & SURVEYORS
5055 NEW BAUMGARTNER ROAD
ST. LOUIS, MISSOURI 63129

DRAWN:
DESIGNED:
CHECKED:

PROJECT:
THE VILLAGES AT SPRINGHURST
SHEET TITLE:

NO. 03	12	26
M.S.D.		SHEET
P#		5.1
DIGITAL FILE LOCATION		OF
SERVER-STERLING-3		
020808P.dwg		

Drawing name: K:\0326260_Springhurst\dwg\Improvements\2650\PREC.DWG Plotted on: Jan 30, 2006 - 8:09am Plotted by: deskes