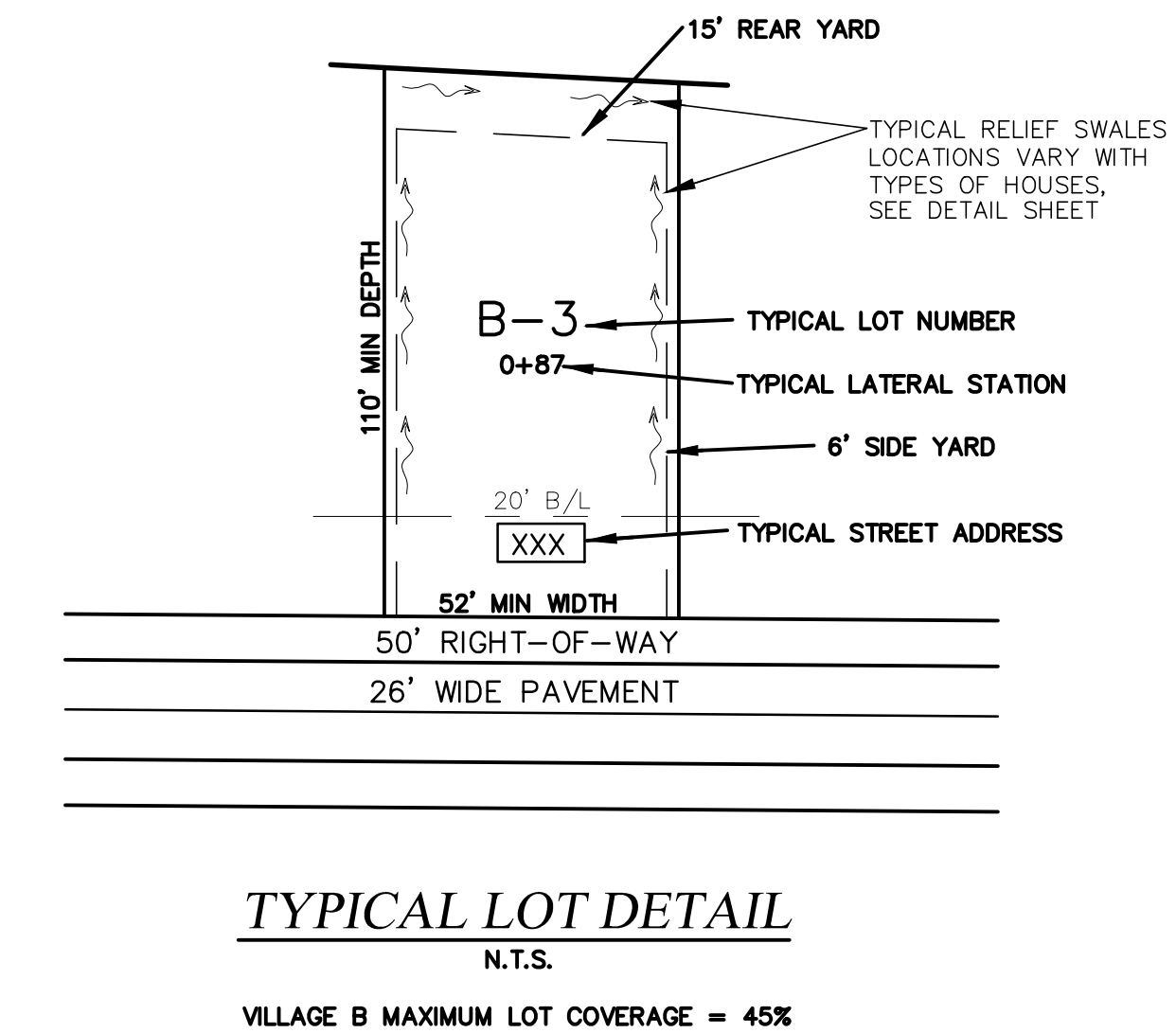
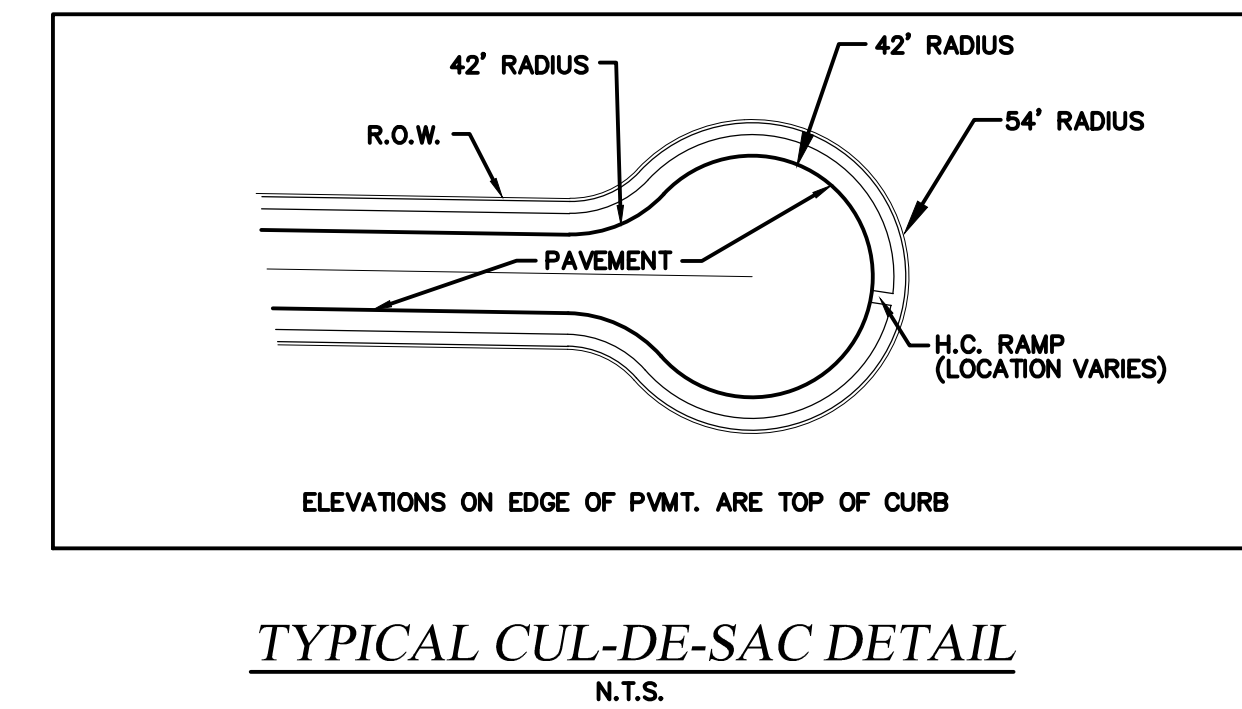
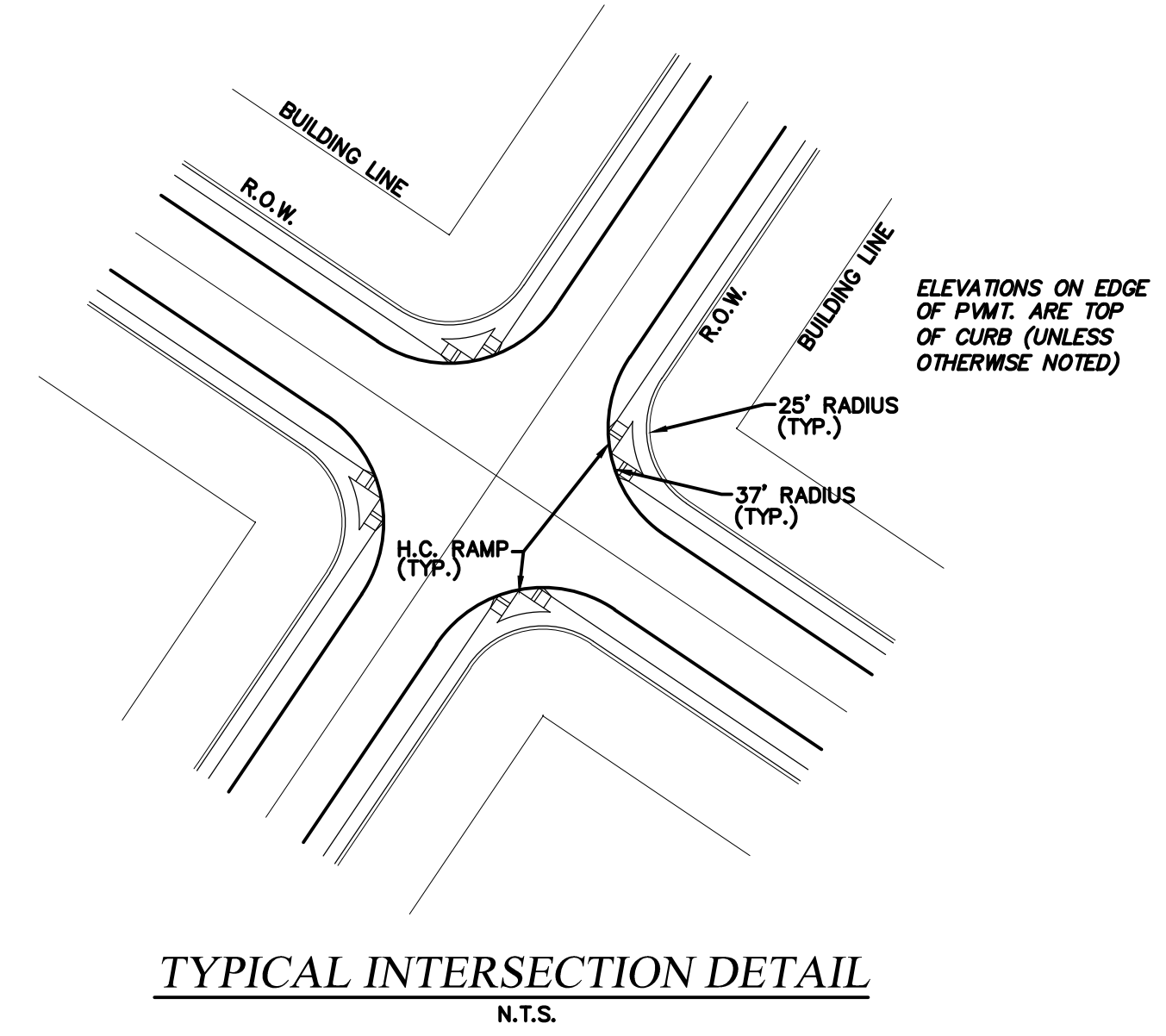
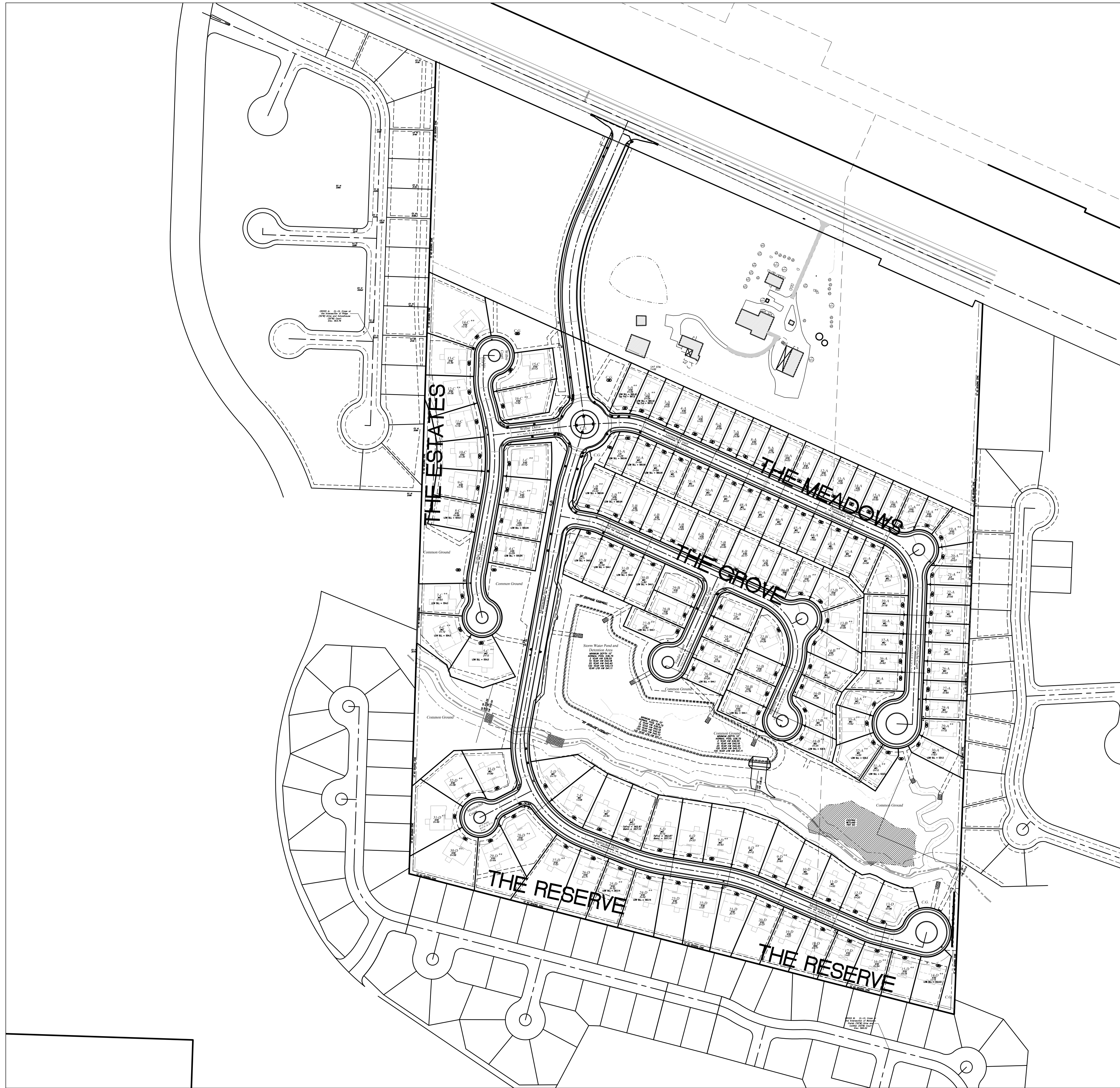


\\PFS-5952011\Projects\14055\MCH0\dwg\Design\OUPR\Improvement\Plans\01-14055_COVER_SHEET.dwg



PROJECT TITLE
IMPROVEMENT PLANS
THE VILLAGES AT
MONTRACHET
MAPKEY

PICKETT, RAY & SILVER INC
CIVIL ENGINEERING, LAND SURVEYING,
AND NATURAL RESOURCES SERVICES
St. Peters
22 Richmond Center Court
St. Peters, MO 63376
Phone (636) 397-1211 Fax (636) 397-1104
www.prs3.com 1-800-708-3918

ENGINEER'S AUTHENTICATION
THE RESPONSIBILITY FOR PROFESSIONAL ENGINEERING LIABILITY ON THIS PROJECT IS LIMITED TO THE SET OF PLANS AUTHENTICATED BY THE SEAL, SIGNATURE, AND DATE HEREON ATTACHED. RESPONSIBILITY IS DISCLAIMED FOR ALL OTHER ENGINEERING PLANS INVOLVED IN THIS PROJECT AND SPECIFICALLY EXCLUDES REVISIONS AFTER THIS DATE UNLESS REAUTHENTICATED.
PICKETT, RAY & SILVER, INC. MO
LICENSE #000026

Karl Anthony Schoenike
KARL ANTHONY SCHOENIKE
NUMBER RE-2003015039
PROFESSIONAL ENGINEER
01-25-16 ELECTRONIC SEAL
KARL A. SCHOENIKE, P.E.
PROFESSIONAL ENGINEER LICENSE 2003015039

Developer / Owner Information
MONTRACHET DEVELOPMENT LLC
218 Chesterfield Towne Centre
Chesterfield, Missouri 63005
Phone: 636-530-6900

P+Z No. 15-15.01
City No. 15-742-SP
Page No. 3 of 63

CITY OF O'FALLON APPROVED 01/25/16 DCSD APPROVED 11/30/15 PERMIT NUMBER 2015-2-005 PWS# #2 APPROVED 12/30/15