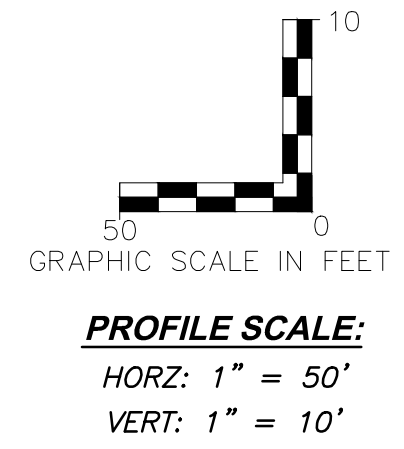
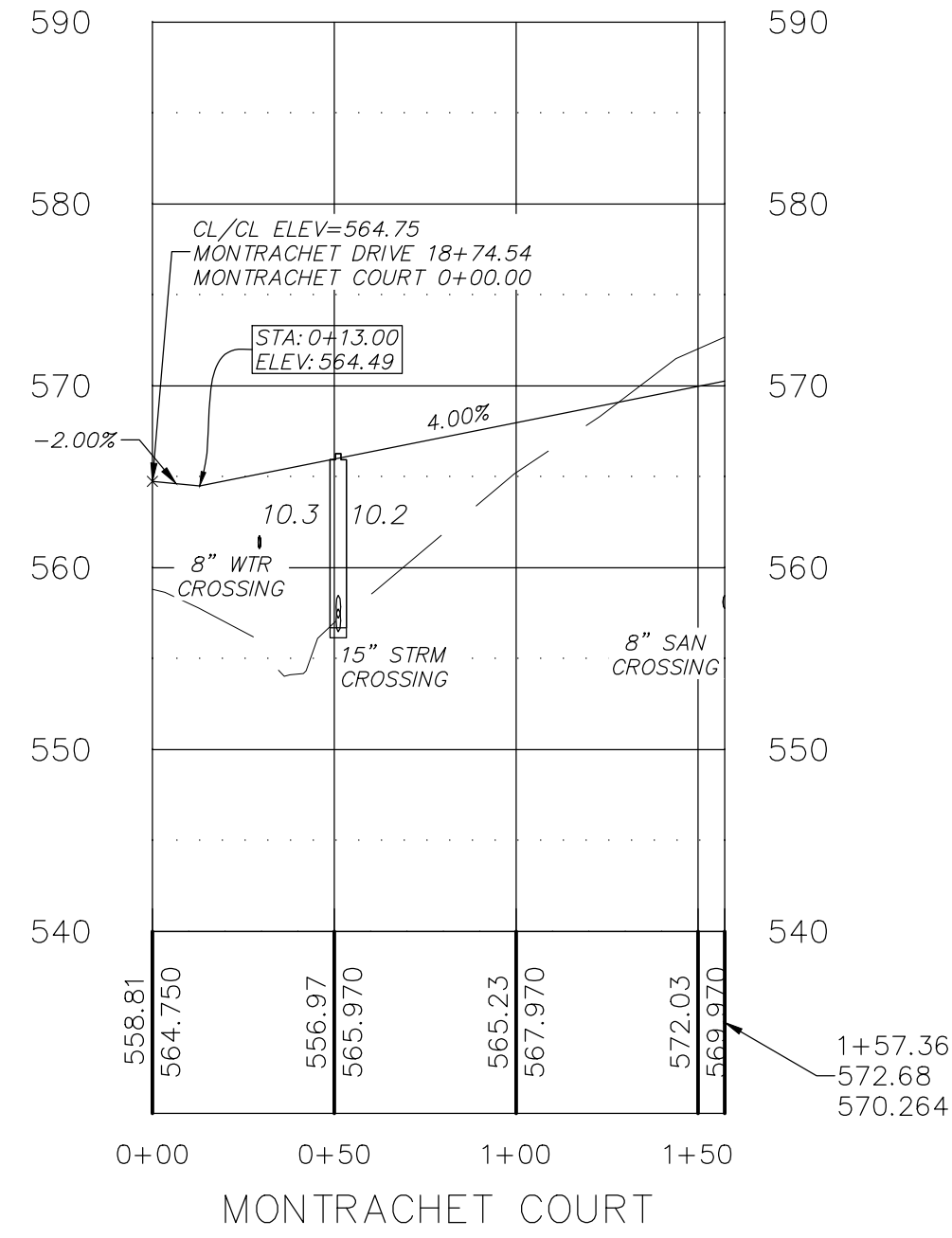
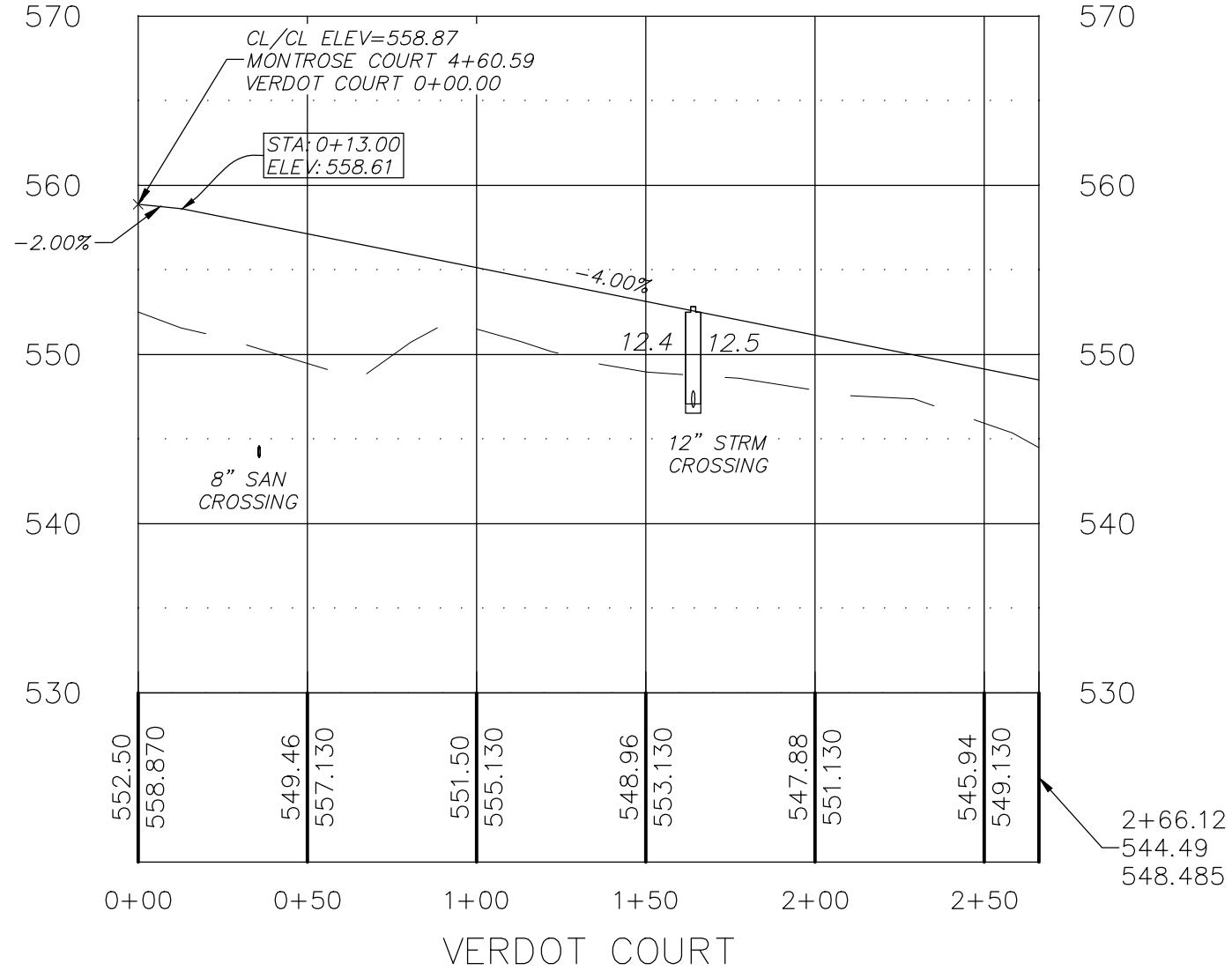
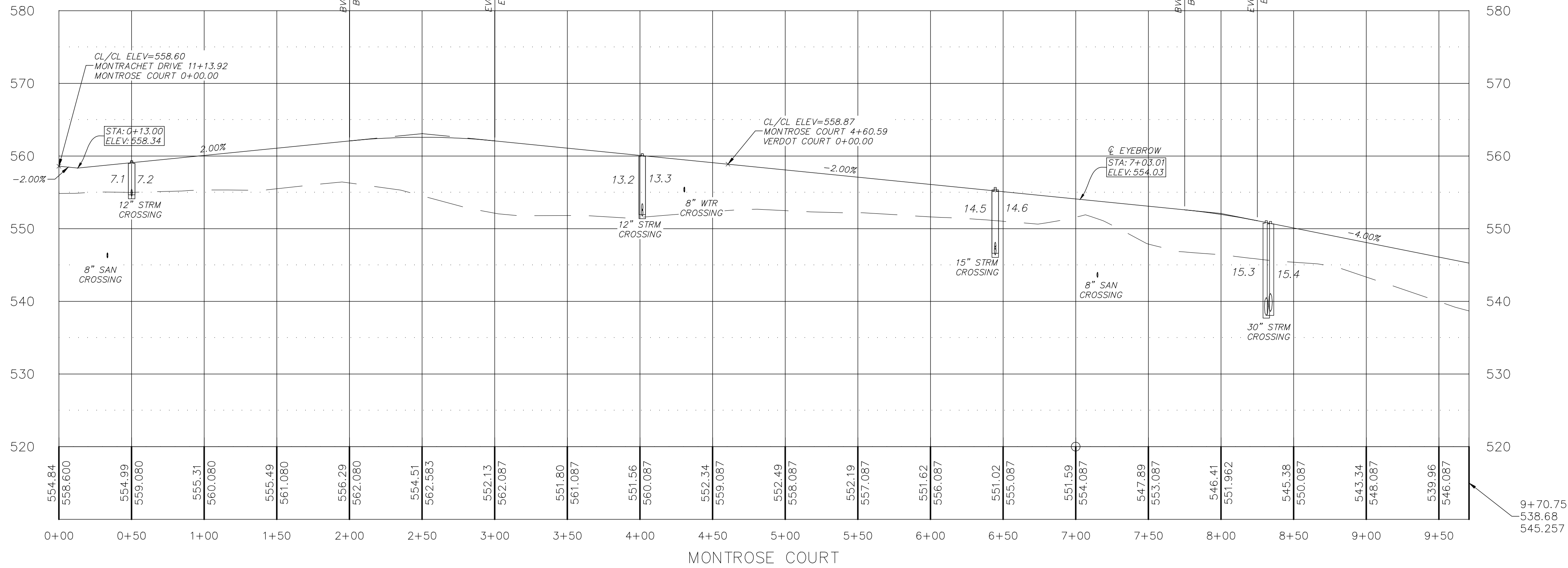


\\PFS-SBS2011\Projects\14055\MCH0\Design\OUTPUT\Improvement Plans\05-14055 STREET PROFILES.dwg



HIGH PT. STA: 2+50.17
HIGH PT. ELEV: 562.58
PVI STA: 2+50.17
PVI ELEV: 563.08
K: 25.00
LVC: 100.00

HIGH PT. STA: 7+75.00
HIGH PT. ELEV: 552.59
PVI STA: 8+00.00
PVI ELEV: 552.09
K: 25.00
LVC: 50.00



PROJECT TITLE
IMPROVEMENT PLANS
THE VILLAGES AT
MONTRACHET
STREET PROFILES

PICKETT, RAY & SILVER INC
CIVIL ENGINEERING, LAND SURVEYING,
AND NATURAL RESOURCES SERVICES
St. Peters
22 Richmond Center Court
St. Peters, MO 63376
Phone (636) 397-1211 Fax (636) 397-1104
www.prs3.com 1-800-708-3918

ENGINEER'S AUTHENTICATION
THE RESPONSIBILITY FOR PROFESSIONAL ENGINEERING
LIABILITY ON THIS PROJECT IS SEVERELY LIMITED TO THE
SET OF PLANS AUTHENTICATED BY THE SEAL, SIGNATURE,
AND DATE HEREINAFTER ATTACHED. RESPONSIBILITY IS
DISCLAIMED FOR ALL OTHER ENGINEERING PLANS
ISSUED IN THIS PROJECT AND SPECIFICALLY EXCLUDES
REVISIONS AFTER THIS DATE UNLESS REAUTHENTICATED.
PICKETT, RAY & SILVER, INC. MO
LICENSE # 000038
Karl Anthony Schoenike
STATE OF MISSOURI
KARL ANTHONY
SCHOENIKE
NUMBER
PE-2003015039
PROFESSIONAL ENGINEER
01-25-16
KARL A. SCHOENIKE, P.E. ELECTRONIC SEAL
PROFESSIONAL ENGINEER LICENSE 2003015039

Developer / Owner Information
MONTRACHET DEVELOPMENT LLC
218 Chesterfield Towne Centre
Chesterfield, Missouri 63005
Phone: 636-530-6900

P+Z No. 15-15.01
City No. 15-742-SP
Page No. STREET PROFILES
25 of 63

PWS #2 APPROVED 12/30/15
CITY OF O'FALLON APPROVED 01/25/16
DCSD APPROVED 11/30/15 PERMIT NUMBER 2015-2-005