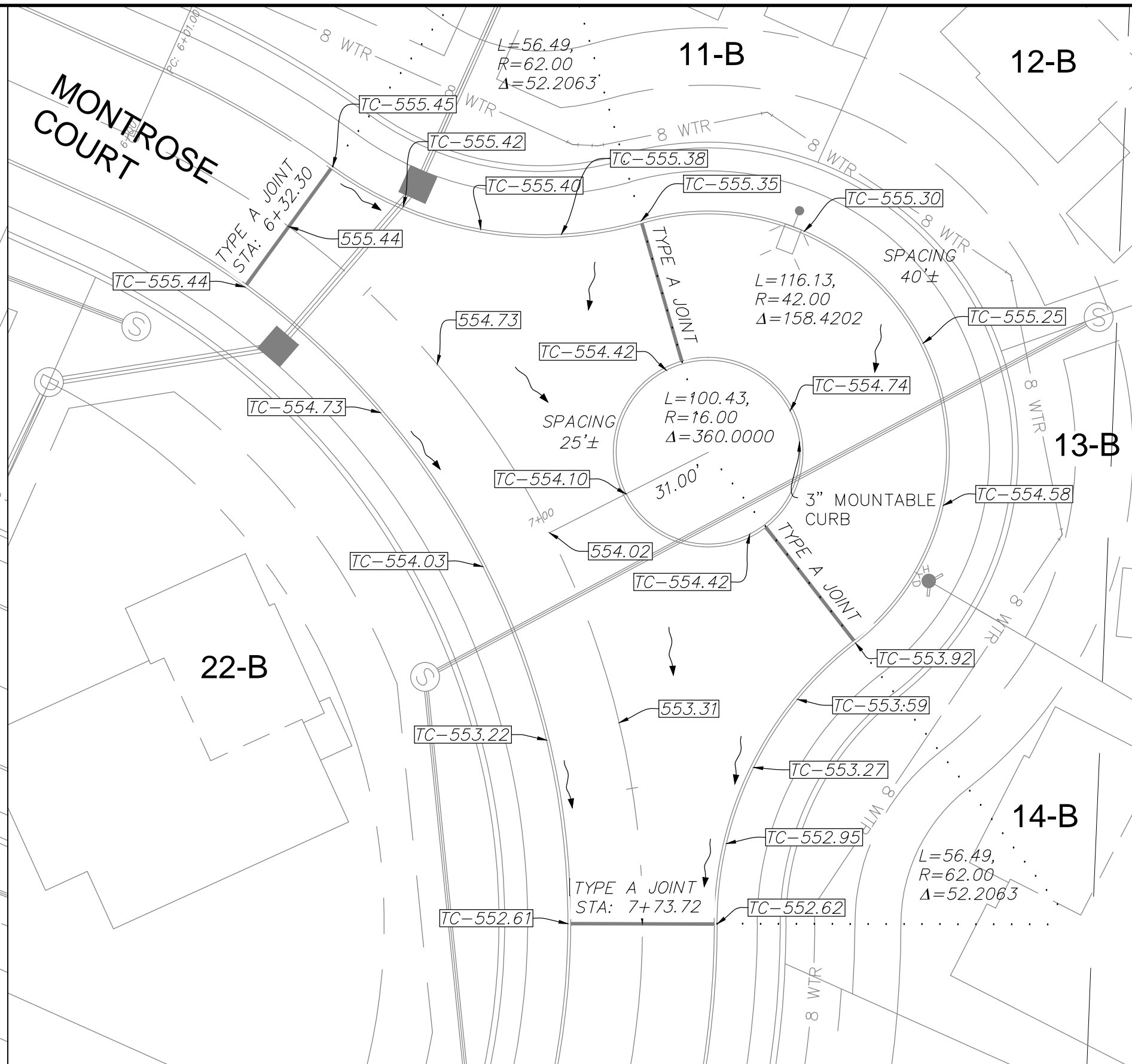
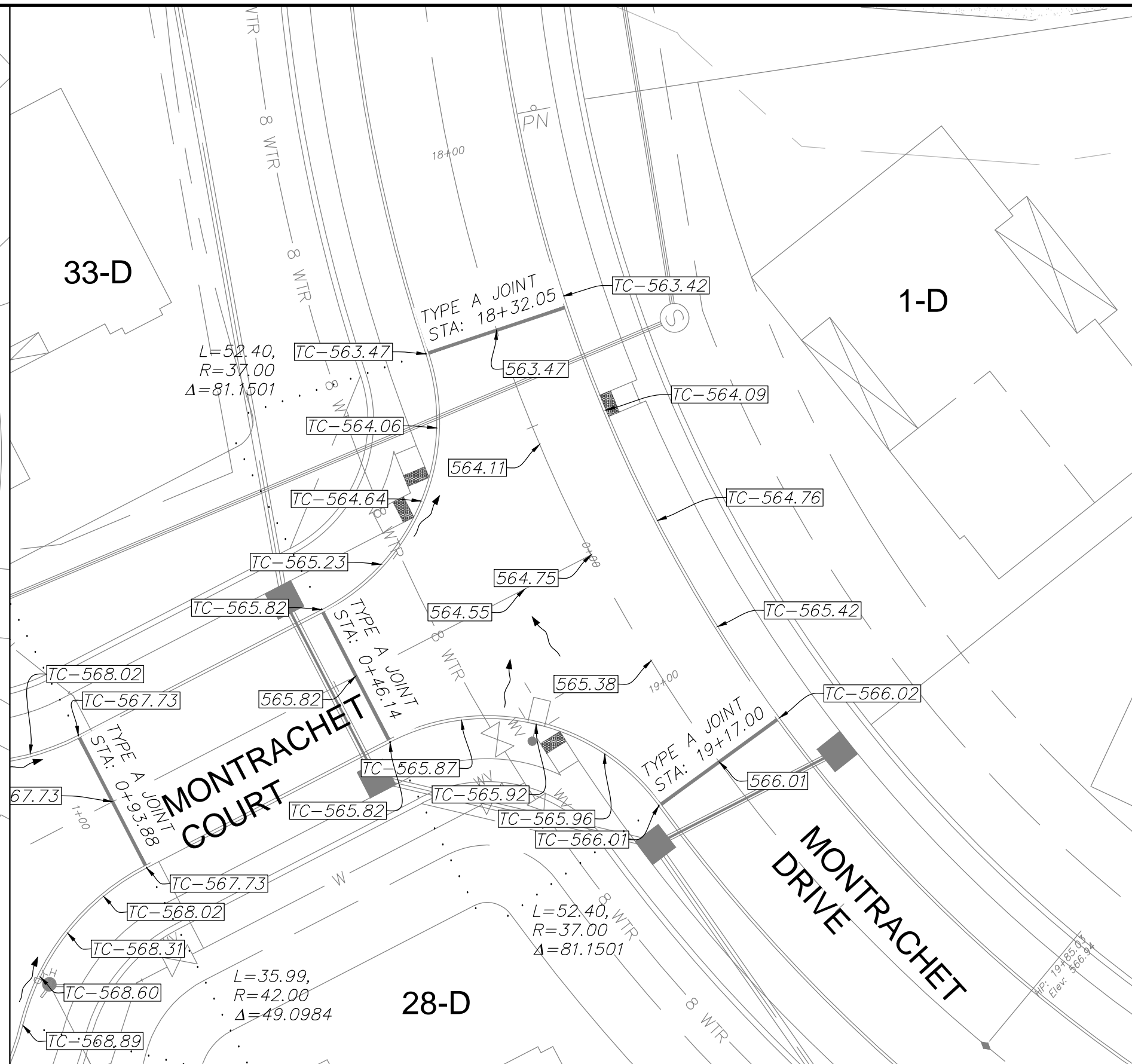


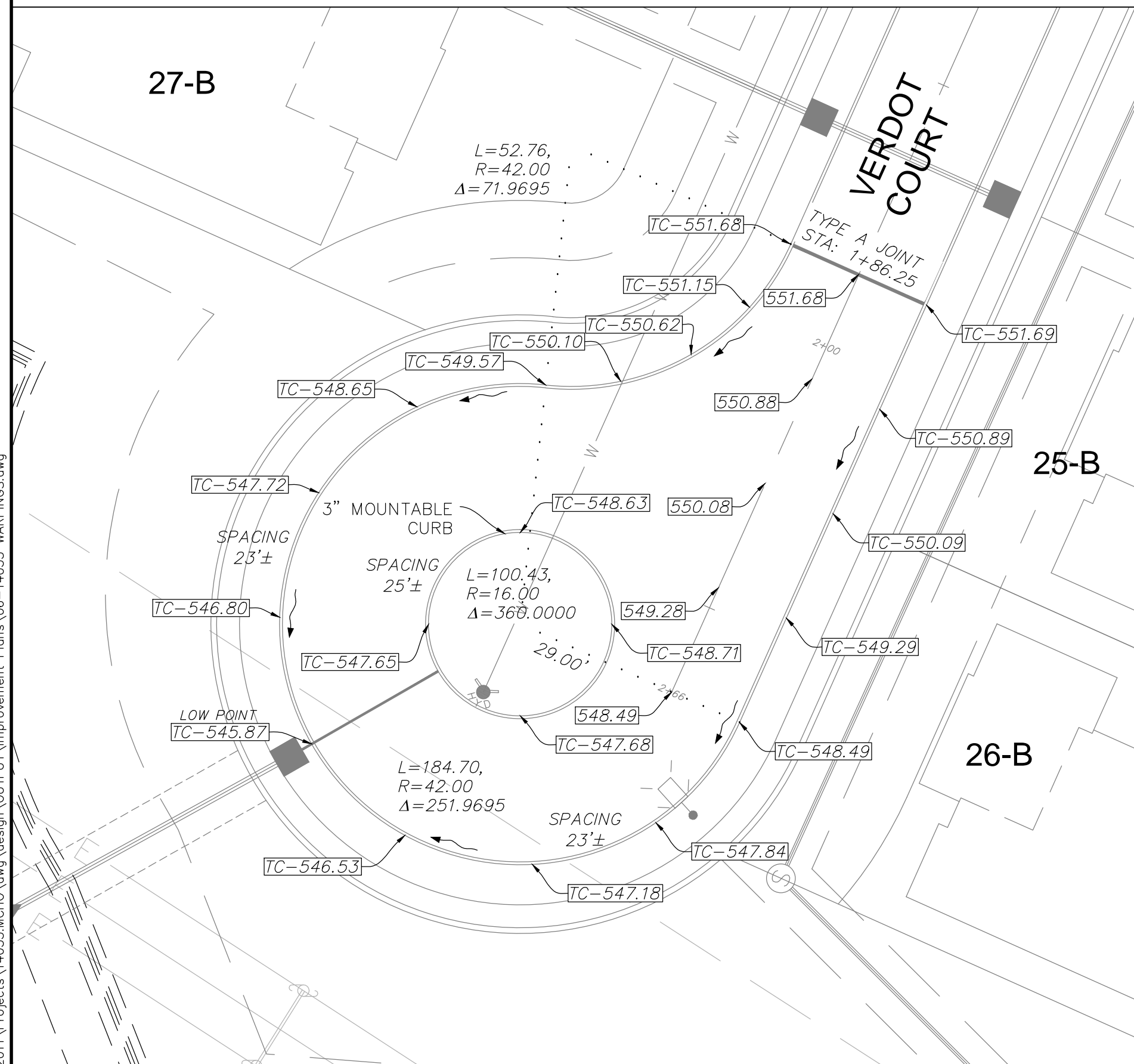
MONTROSE COURT AND VERDROT COURT
SCALE 1" = 20'



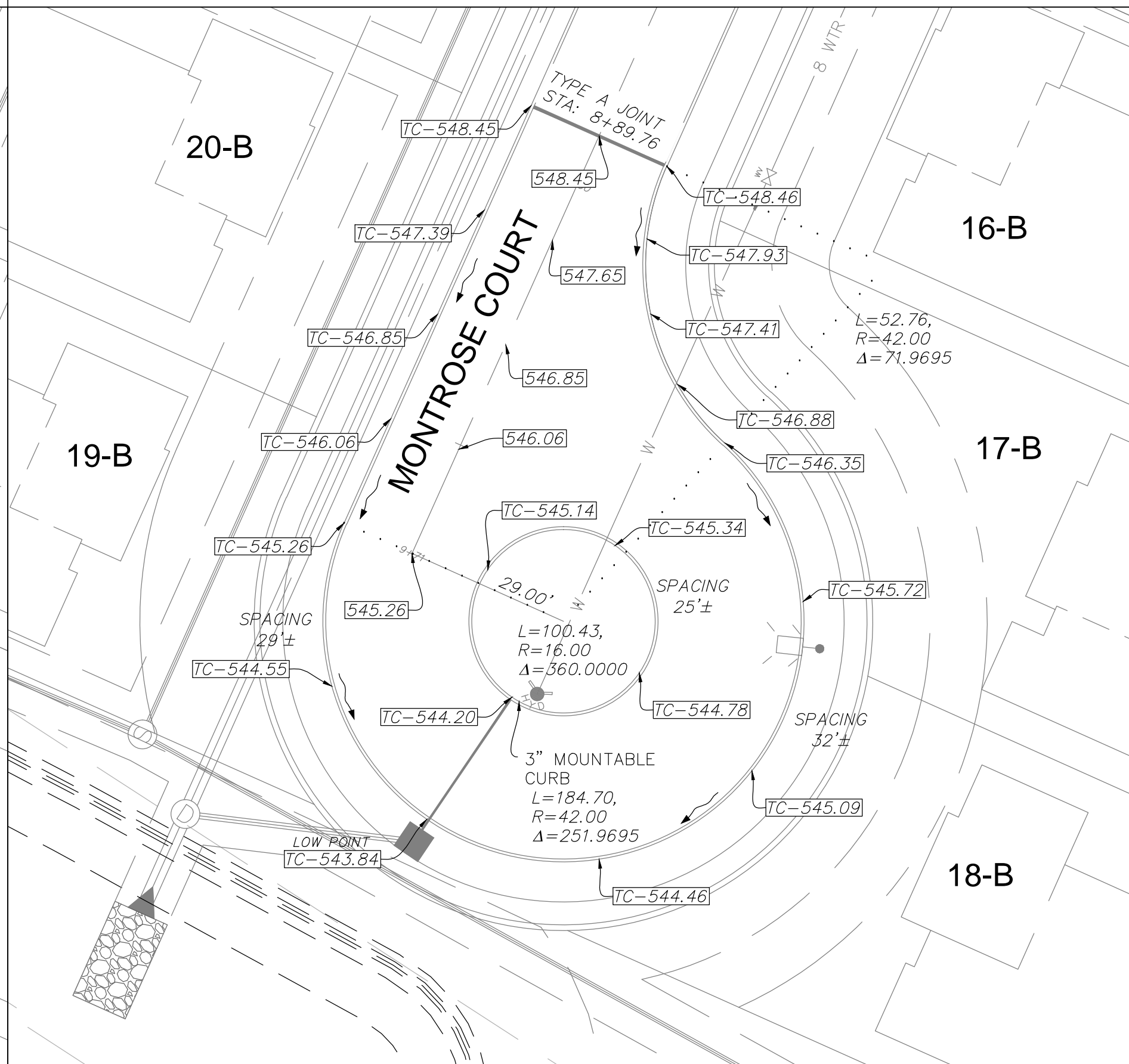
MONTROSE COURT EYE BROW
SCALE 1" = 20'



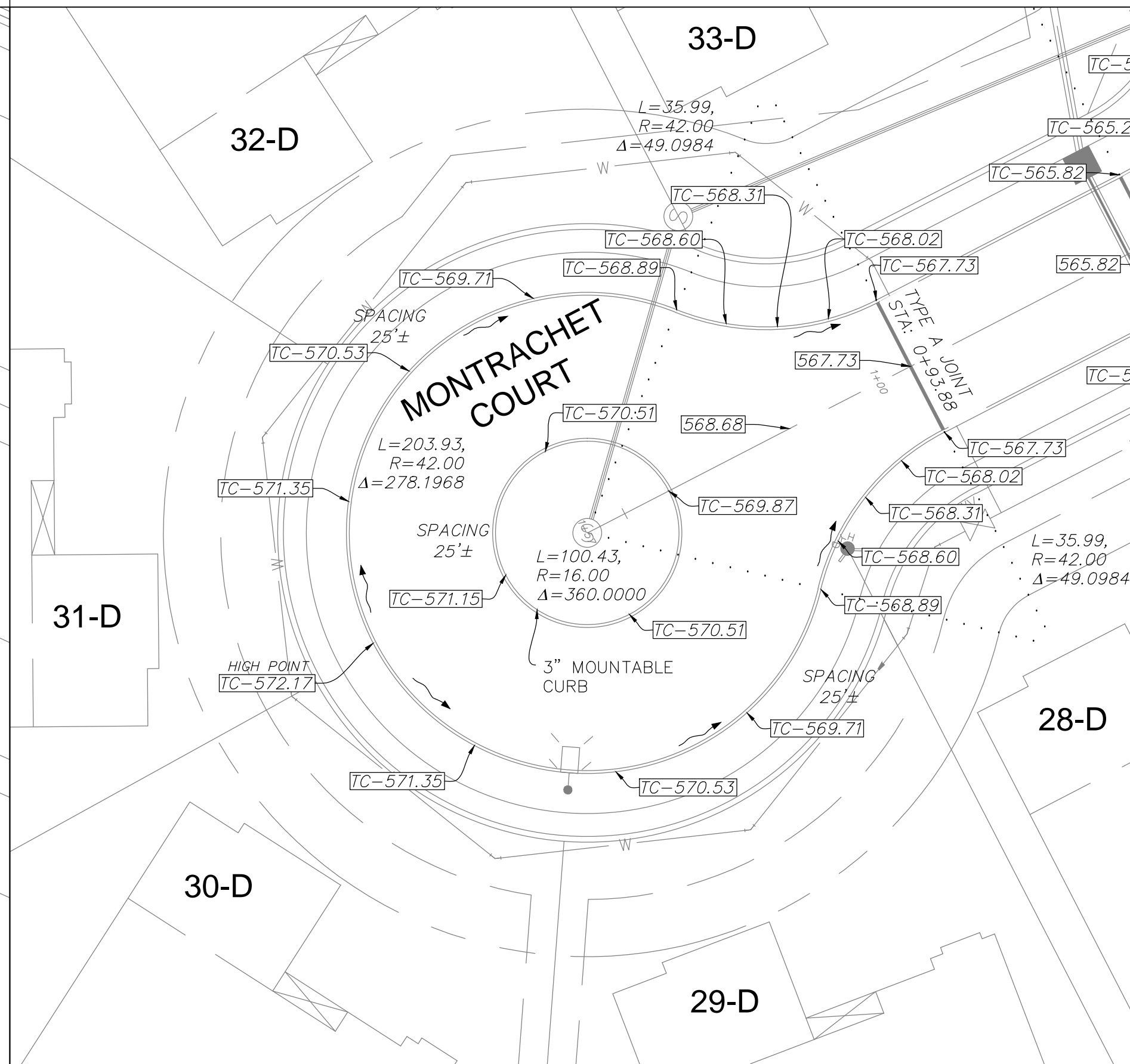
MONTRACHET DRIVE AND MONTRACHET COURT
SCALE 1" = 20'



VERDROT COURT CUL-DE-SAC
SCALE 1" = 20'



MONTROSE COURT CUL-DE-SAC
SCALE 1" = 20'



MONTRACHET COURT CUL-DE-SAC
SCALE 1" = 20'

PROJECT TITLE
IMPROVEMENT PLANS
THE VILLAGES AT
MONTRACHET
PAVEMENT WARPINGS

PICKETT, RAY & SILVER INC
CIVIL ENGINEERING, LAND SURVEYING,
AND NATURAL RESOURCES SERVICES
St. Peters
22 Richmond Center Court
St. Peters, MO 63376
Phone (636) 397-1211 Fax (636) 397-1104
www.prs.com 1-800-708-3918

ENGINEER'S AUTHENTICATION
THE RESPONSIBILITY FOR PROFESSIONAL ENGINEERING
LIABILITY ON THIS PROJECT IS LIMITED TO THE
SET OF PLANS AUTHENTICATED BY THE SEAL, SIGNATURE,
AND DATE HEREON ATTACHED. RESPONSIBILITY IS
DISCLAIMED FOR ALL OTHER ENGINEERING PLANS
ISSUED IN THIS PROJECT AND SPECIFICALLY EXCLUDES
REVISIONS AFTER THIS DATE UNLESS REAUTHENTICATED.
PICKETT, RAY & SILVER, INC. MO
LICENSE #000000



Developer / Owner Information
MONTRACHET DEVELOPMENT LLC
218 Chesterfield Towne Centre
Chesterfield, Missouri 63005
Phone: 636-530-6900

P+Z No. 15-15.01
City No. 15-742-SP
Page No. 28 of 63

PAVEMENT WARPINGS
City of O'Fallon Standard Subdivision Notes and Details - June 2010

PWSD #2 APPROVED 12/30/15

CITY OF O'FALLON APPROVED 01/25/16

DCSD APPROVED 11/30/15 PERMIT NUMBER 2015-2-005