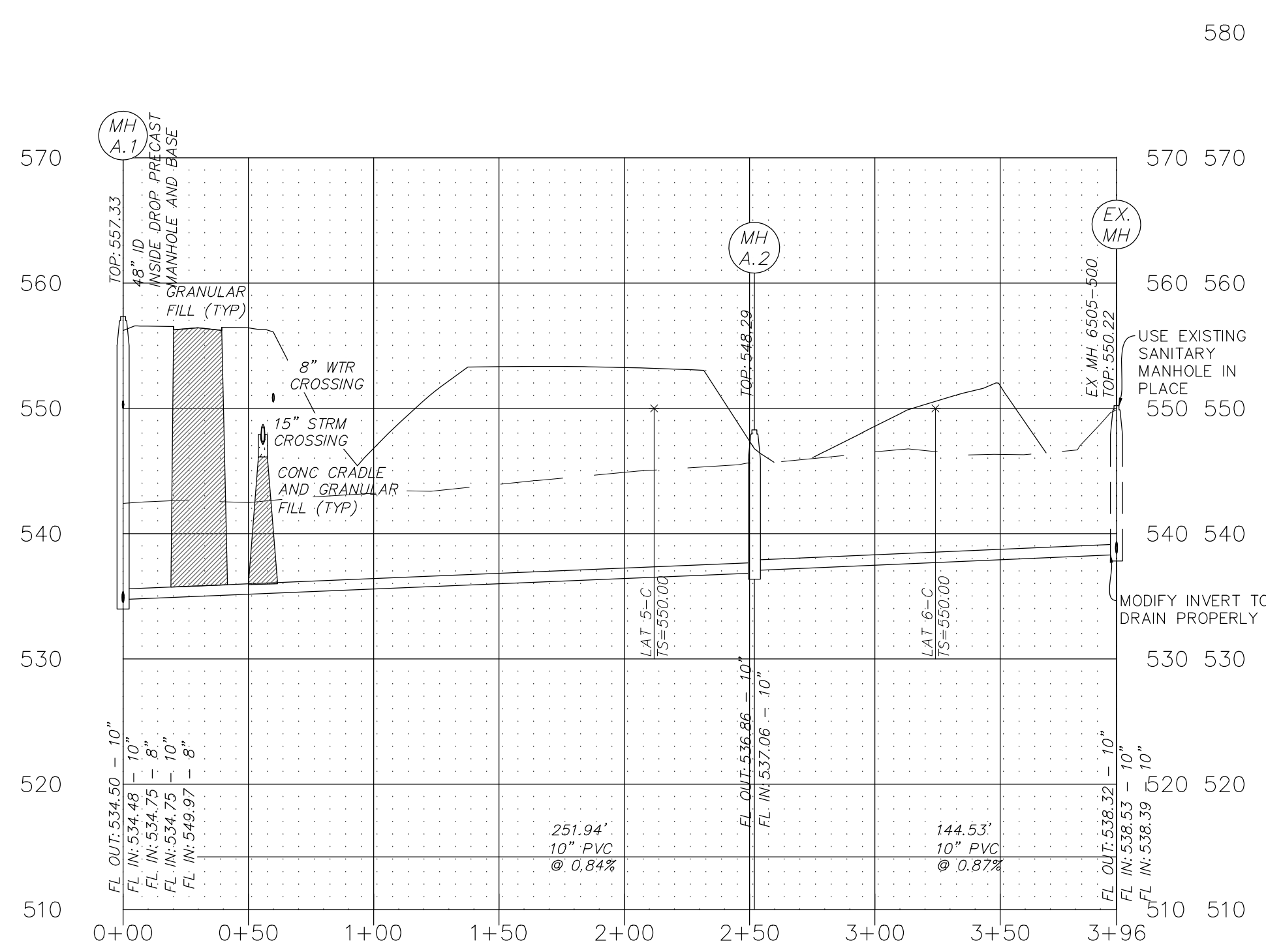
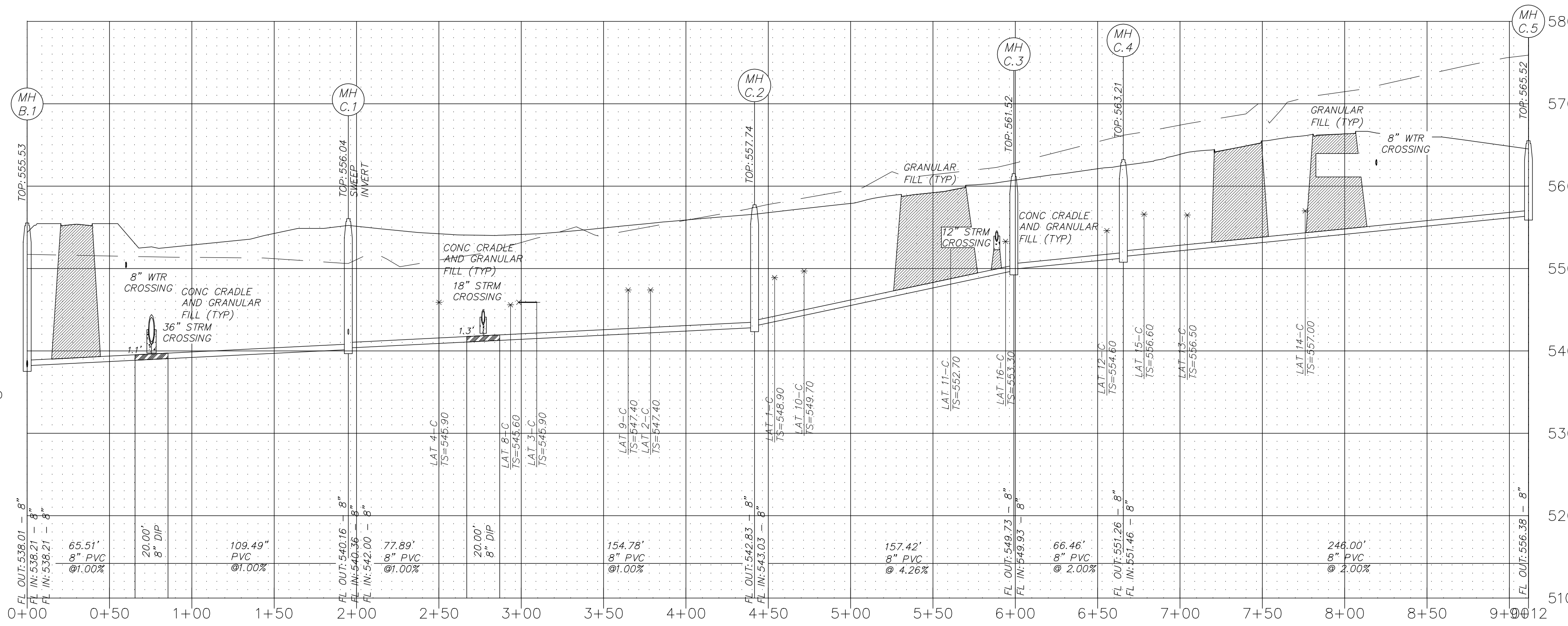


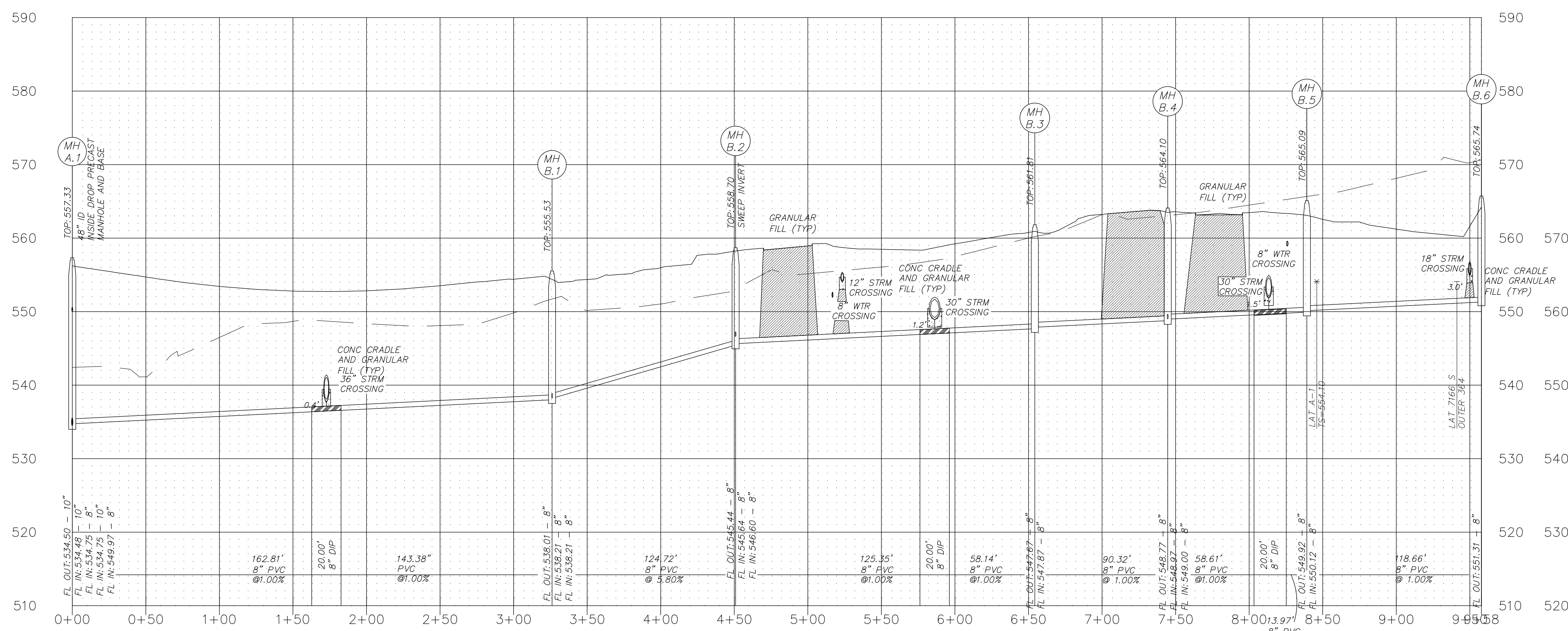
\\PES-585201\Projects\14055\MCH00\Design\OUTPUT\Improvement Plans\07-14055 SANITARY PROFILES.dwg



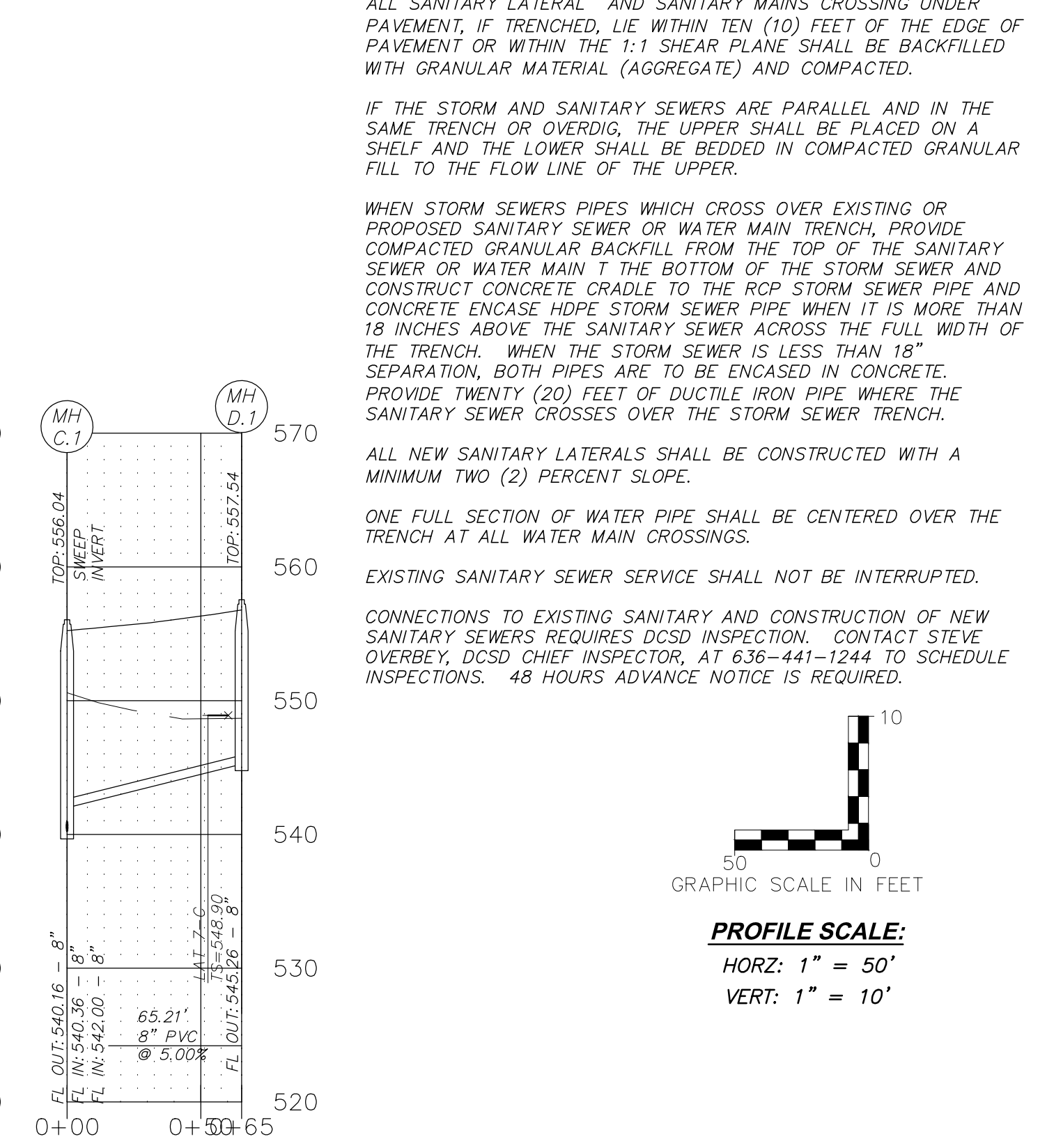
SANITARY A



SANITARY C



SANITARY B



SANITARY D

NOTES:

ALL SANITARY LATERAL AND SANITARY MAINS CROSSING UNDER PAVEMENT, IF TRENCHED, LIE WITHIN TEN (10) FEET OF THE EDGE OF PAVEMENT OR WITHIN THE 1:1 SHEAR PLANE SHALL BE BACKFILLED WITH GRANULAR MATERIAL (AGGREGATE) AND COMPACTED.

IF THE STORM AND SANITARY SEWERS ARE PARALLEL AND IN THE SAME TRENCH OR OVERDIG, THE UPPER SHALL BE PLACED ON A SHELF AND THE LOWER SHALL BE BEDDED IN COMPACTED GRANULAR FILL TO THE FLOW LINE OF THE UPPER.

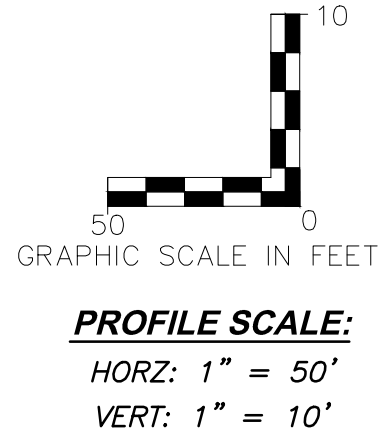
WHEN STORM SEWERS PIPES WHICH CROSS OVER EXISTING OR PROPOSED SANITARY SEWER OR WATER MAIN TRENCH, PROVIDE COMPACTED GRANULAR BACKFILL FROM THE TOP OF THE SANITARY SEWER OR WATER MAIN TO THE BOTTOM OF THE STORM SEWER AND CONSTRUCT CONCRETE CRADLE TO THE RCP STORM SEWER PIPE AND CONCRETE ENCASE HDPE STORM SEWER PIPE WHEN IT IS MORE THAN 18 INCHES ABOVE THE SANITARY SEWER ACROSS THE FULL WIDTH OF THE TRENCH. WHEN THE STORM SEWER IS LESS THAN 18" SEPARATION, BOTH PIPES ARE TO BE ENCASED IN CONCRETE. PROVIDE TWENTY (20) FEET OF DUCTILE IRON PIPE WHERE THE SANITARY SEWER CROSSES OVER THE STORM SEWER TRENCH.

ALL NEW SANITARY LATERALS SHALL BE CONSTRUCTED WITH A MINIMUM TWO (2) PERCENT SLOPE.

ONE FULL SECTION OF WATER PIPE SHALL BE CENTERED OVER THE TRENCH AT ALL WATER MAIN CROSSINGS.

EXISTING SANITARY SEWER SERVICE SHALL NOT BE INTERRUPTED.

CONNECTIONS TO EXISTING SANITARY AND CONSTRUCTION OF NEW SANITARY SEWERS REQUIRES DCSD INSPECTION. CONTACT STEVE OVERBEY, DCSD CHIEF INSPECTOR, AT 636-441-1244 TO SCHEDULE INSPECTIONS. 48 HOURS ADVANCE NOTICE IS REQUIRED.



PROJECT TITLE
IMPROVEMENT PLANS
THE VILLAGES AT
MONTRACHET
SANITARY PROFILES

PICKETT, RAY & SILVER INC
CIVIL ENGINEERING, LAND SURVEYING,
AND NATURAL RESOURCES SERVICES
St. Peters
22 Richmond Center Court
St. Peters, MO 63376
Phone (636) 397-1211 Fax (636) 397-1104
www.prs.com 1-800-708-3818

ENGINEERS AUTHENTICATION
THE RESPONSIBILITY FOR PROFESSIONAL ENGINEERING LIABILITY ON THIS PROJECT IS LIMITED TO THE SET OF PLANS AUTHORIZED BY THE SEAL, SIGNATURE, AND DATE HEREON ATTACHED. RESPONSIBILITY IS DISCLAIMED FOR ALL OTHER ENGINEERING PLANS INCORPORATED IN THIS PROJECT AND SPECIFICALLY EXCLUDES REVISIONS AFTER THIS DATE UNLESS REAUTHENTICATED.
PICKETT, RAY & SILVER, INC. MO
LICENSE #000000
KARL ANTHONY SCHOENIKE
NUMBER RE-2003015038
PROFESSIONAL ENGINEER
01-25-16 ELECTRONIC SEAL
KARL A. SCHOENIKE, P.E.
PROFESSIONAL ENGINEER LICENSE 2003015038

Developer / Owner Information
MONTRACHET DEVELOPMENT LLC
218 Chesterfield Towne Centre
Chesterfield, Missouri 63005
Phone: 636-530-6900

P+Z No. 15-15.01
City No. 15-742-SP
Page No. SANITARY PROFILES
30 of 63

DCSD APPROVED 11/30/15 PERMIT NUMBER 2015-2-005 CITY OF FALLON APPROVED 01/25/16 PWS #2 APPROVED 12/30/15