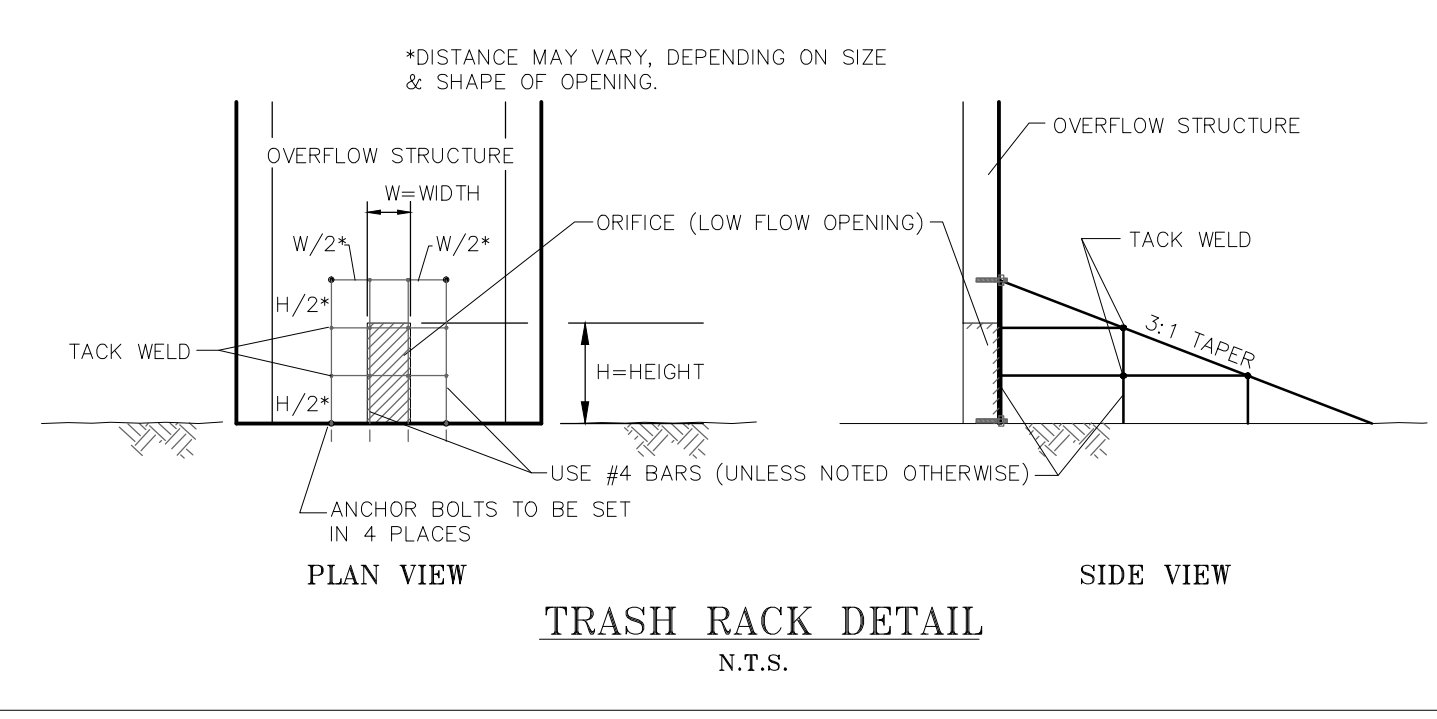
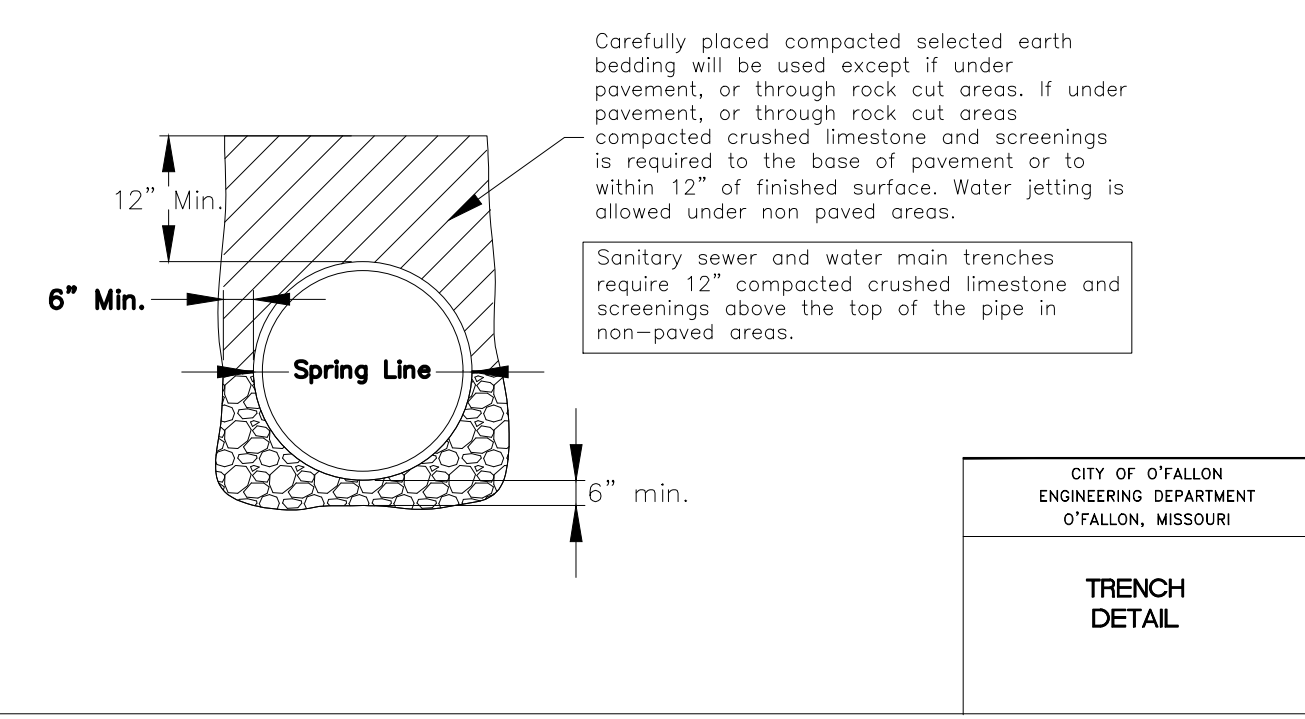
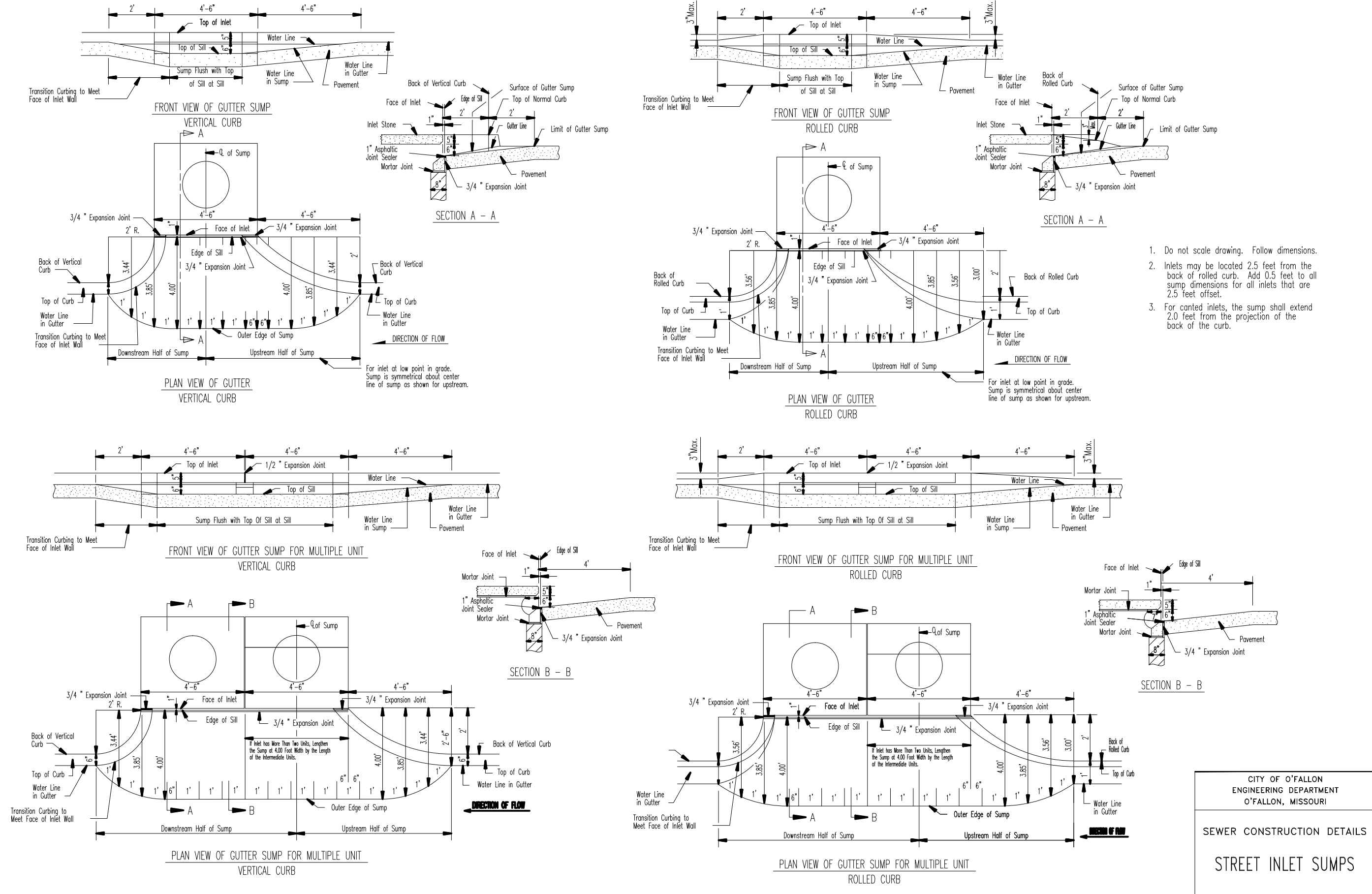
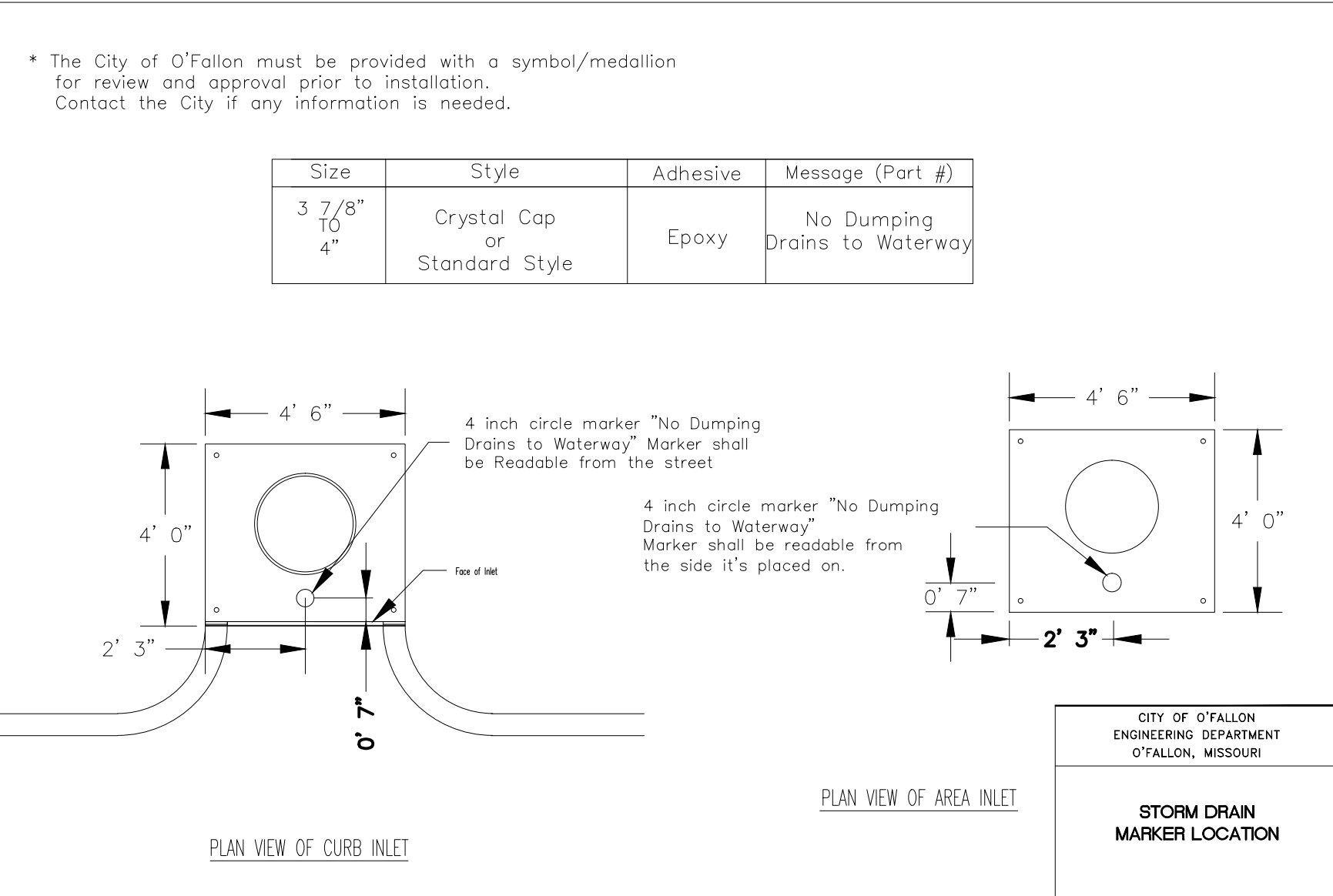
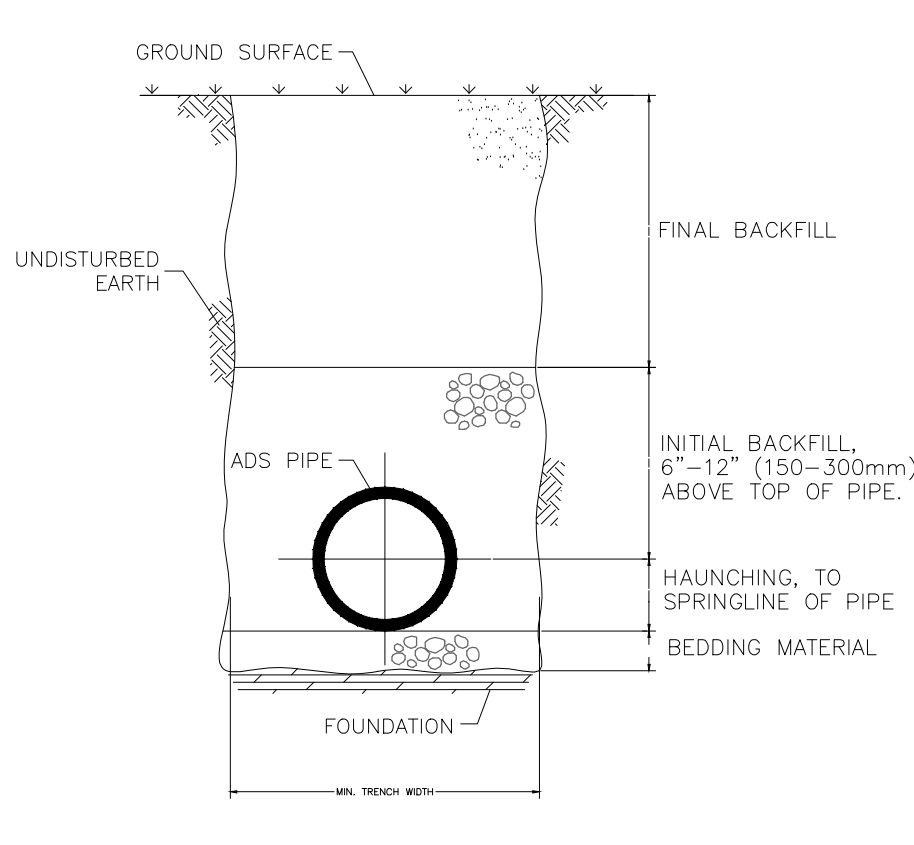


MSD Type 5 Rock Blanket (% By Weight Passing)

Sieve	Maximum	Minimum
12 inch	90	70
6 inch	30	10
1/2 inch	5	0



HDPE PIPE TRENCH INSTALLATION DETAIL



NOTES:

- FOUNDATION: WHERE THE TRENCH BOTTOM IS UNSTABLE, THE CONTRACTOR SHALL EXCAVATE TO A DEPTH REQUIRED BY THE ENGINEER AND REPLACE WITH A FOUNDATION OF CLASS I OR II MATERIAL AS DEFINED IN ASTM D2321, "STANDARD PRACTICE FOR INSTALLATION OF THERMOPLASTIC PIPE FOR SEWERS AND OTHER GRAVITY-FLOW APPLICATIONS," LATEST EDITION; AS AN ALTERNATIVE AND AT THE DISCRETION OF THE ENGINEER, THE TRENCH BOTTOM MAY BE STABILIZED USING A WOVEN GEOTEXTILE FABRIC.
- BEDDING: SUITABLE MATERIAL SHALL BE CLASS I, II OR III AND INSTALLED AS REQUIRED IN ASTM D2321, LATEST EDITION. UNLESS OTHERWISE SPECIFIED BY THE ENGINEER, MINIMUM BEDDING THICKNESS SHALL BE 4" (100mm) FOR 4"-24" (100-600mm) AND 42"-48" (1050-1200mm) CORRUGATED POLYETHYLENE PIPE (CPEP); 6" (150mm) FOR 30"-36" (750-900mm) CPEP.
- HAUNCHING AND INITIAL BACKFILL: SUITABLE MATERIAL SHALL BE CLASS I, II OR III AND INSTALLED AS REQUIRED IN ASTM D2321, LATEST EDITION.
- UNLESS OTHERWISE SPECIFIED BY THE ENGINEER, MINIMUM TRENCH WIDTHS SHALL BE AS FOLLOWS:

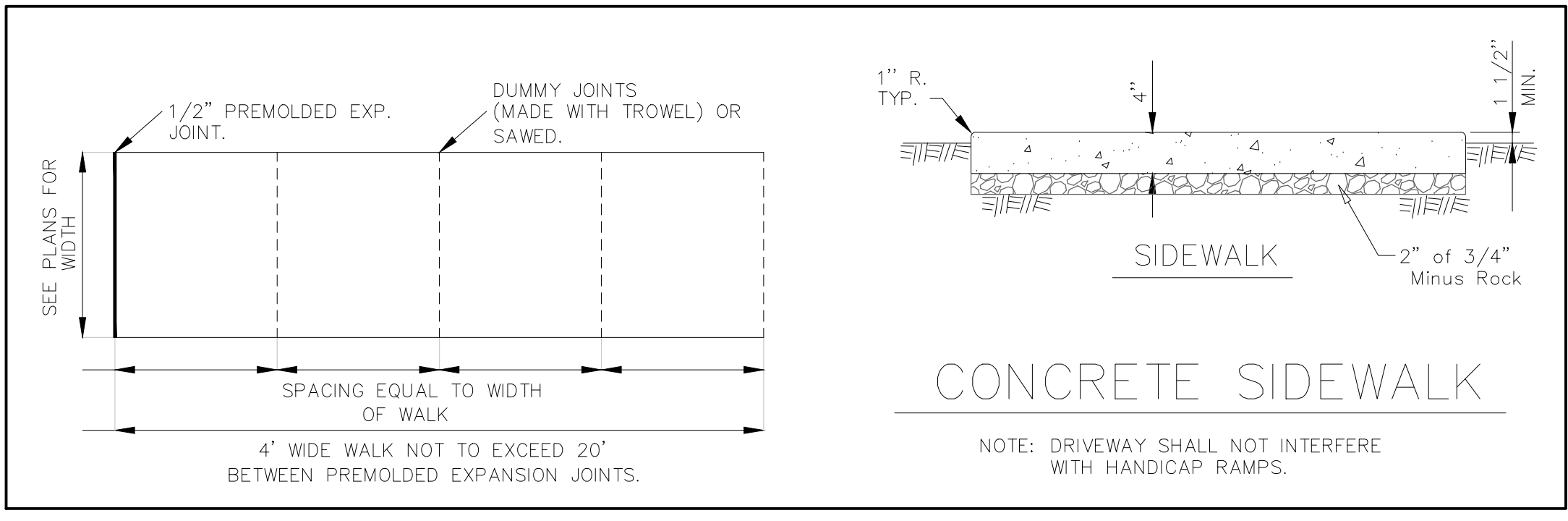
NOMINAL ϕ in (mm)	MIN. RECOMMENDED TRENCH WIDTH in (mm)
4 (100)	21 (530)
6 (150)	23 (580)
8 (200)	25 (630)
10 (250)	28 (710)
12 (300)	31 (790)
15 (375)	34 (860)
18 (450)	39 (990)
24 (600)	48 (1220)
30 (750)	66 (1680)
36 (900)	78 (1980)
42 (1050)	83 (2110)
48 (1200)	89 (2260)
60 (1500)	102 (2590)

- MINIMUM COVER: MINIMUM RECOMMENDED DEPTHS OF COVER FOR VARIOUS LIVE LOADING CONDITIONS ARE SUMMARIZED IN THE FOLLOWING TABLE. UNLESS OTHERWISE NOTED, ALL DIMENSIONS ARE TAKEN FROM THE TOP OF PIPE TO THE GROUND SURFACE.

SURFACE LIVE LOADING CONDITION	MINIMUM RECOMMENDED COVER in (mm)
H25 (FLEXIBLE PAVEMENT)	12 (300)
H25 (RIGID PAVEMENT)	12 (300)
E80 RAILWAY	24 (610)
HEAVY CONSTRUCTION	48 (1220)

*TOP OF PIPE TO BOTTOM OF BITUMINOUS PAVEMENT SECTION

*** SEE SHEET 55 ***
FOR STORM STRUCTURE LID DETAIL



ADS STANDARD DETAILS DISCLAIMER: "ADVANCED DRAINAGE SYSTEMS, INC. (ADS) HAS PREPARED THIS STANDARD DETAIL TO DEMONSTRATE ADS' RECOMMENDED INSTALLATION OF ITS PRODUCTS FOR THE DEPICED APPLICATION. IN ADDITION TO ADS' RECOMMENDATIONS, THERE MAY BE OTHER NATIONAL, STATE OR LOCAL SPECIFICATIONS THAT ARE PERTINENT TO THIS APPLICATION. ADS' STANDARD DETAIL IS NOT INTENDED TO SUPERSEDE ANY NATIONAL, STATE OR LOCAL SPECIFICATIONS, AND ADS RECOMMENDS THAT THOSE REQUIREMENTS BE REVIEWED AND CONSULTED PRIOR TO THE INSTALLATION OF ADS' PRODUCTS. ADS HAS NOT AUTHORIZED, AND IT BEARS NO RESPONSIBILITY FOR, ANY REVISIONS, ALTERATIONS OR DEVIATIONS FROM THIS STANDARD DETAIL."

DRAWN BY K.M.J.	APPROVED BY 5-7-99	DESIGNED BY P.X.C.	DATE 5-7-99	DRAWING # STD-101
--------------------	-----------------------	-----------------------	----------------	----------------------

REVISIONS	
BY	DATE

* All other Storm or Sanitary Sewer Details will be by M.S.D. 2007 Standards and Specifications.

PROJECT TITLE
**IMPROVEMENT PLANS
THE VILLAGES AT
MONTRACHET
DETAILS**

PICKETT, RAY & SILVER INC
CIVIL ENGINEERING, LAND SURVEYING,
AND NATURAL RESOURCES SERVICES

St. Peters
22 Richmond Center Court
St. Peters, MO 63376

Phone (636) 397-1211 Fax (636) 397-1104
www.prs.com 1-800-708-3918

ENGINEER'S AUTHENTICATION
THE RESPONSIBILITY FOR PROFESSIONAL ENGINEERING LIABILITY ON THIS PROJECT IS HEREBY LIMITED TO THE SET OF PLANS AUTHENTICATED BY THE SEAL, SIGNATURE, AND DATE HEREON ATTACHED. RESPONSIBILITY IS DISCLAIMED FOR ALL OTHER ENGINEERING PLANS INVOLVED IN THIS PROJECT AND SPECIFICALLY EXCLUDES REVISIONS AFTER THIS DATE UNLESS REAUTHENTICATED.

PICKETT, RAY & SILVER, INC. MO LICENSE #000336

KARL ANTHONY SCHOENIKE
PROFESSIONAL ENGINEER
RE-2003015036

01-25-16 ELECTRONIC SEAL
KARL A. SCHOENIKE, P.E.
PROFESSIONAL ENGINEER LICENSE 2003015036

Developer / Owner Information
MONTRACHET DEVELOPMENT LLC
218 Chesterfield Towne Centre
Chesterfield, Missouri 63005
Phone: 636-550-6900

P+Z No. 15-1501
City No. 15-742-SP
Page No. 53 of 63
DETAILS

CITY OF O'FALLON APPROVED 12/30/15 PWS# #2 APPROVED 01/25/16 CITY OF O'FALLON APPROVED 11/30/15 PERMIT NUMBER 2015-2-005 DCSD