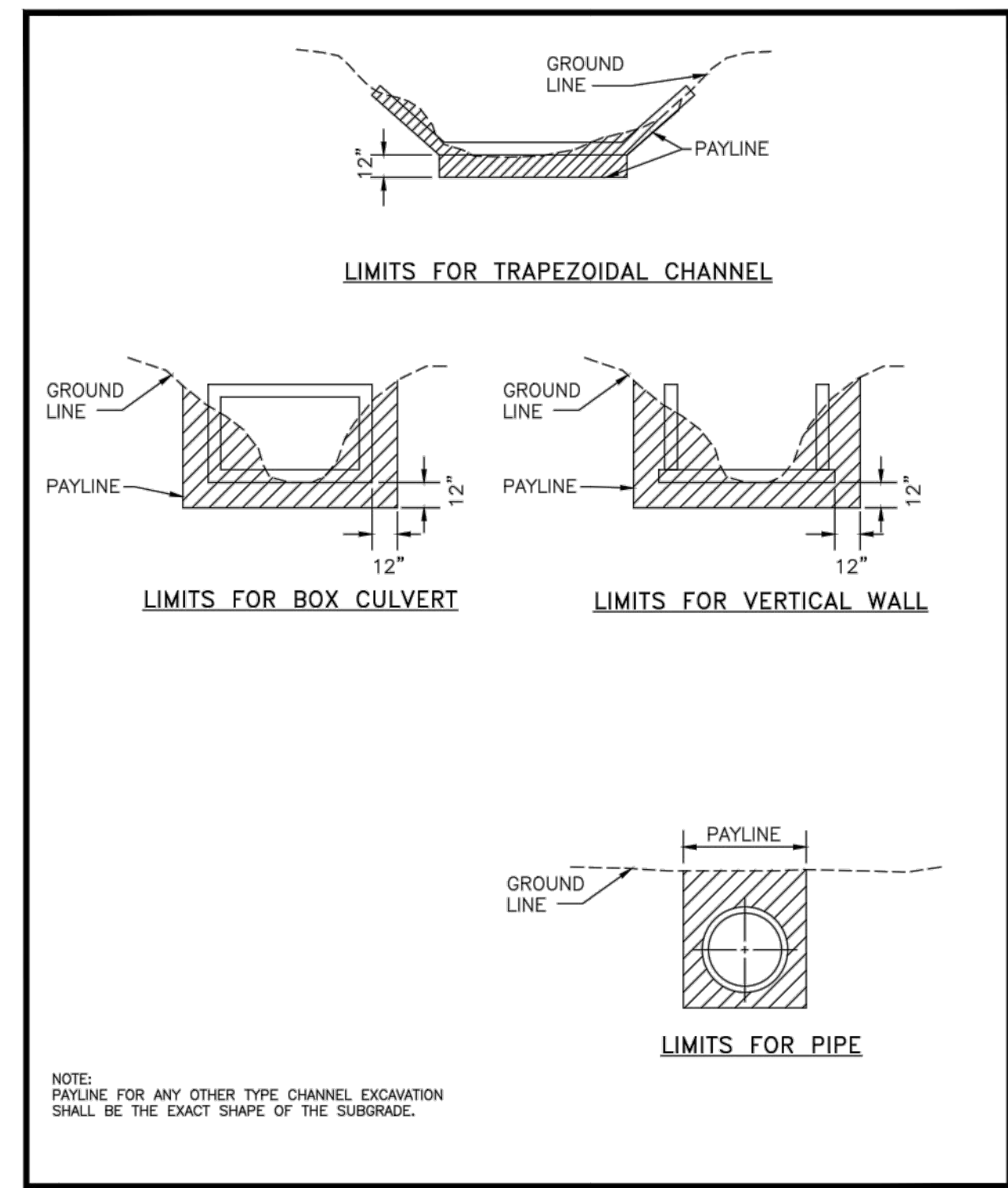
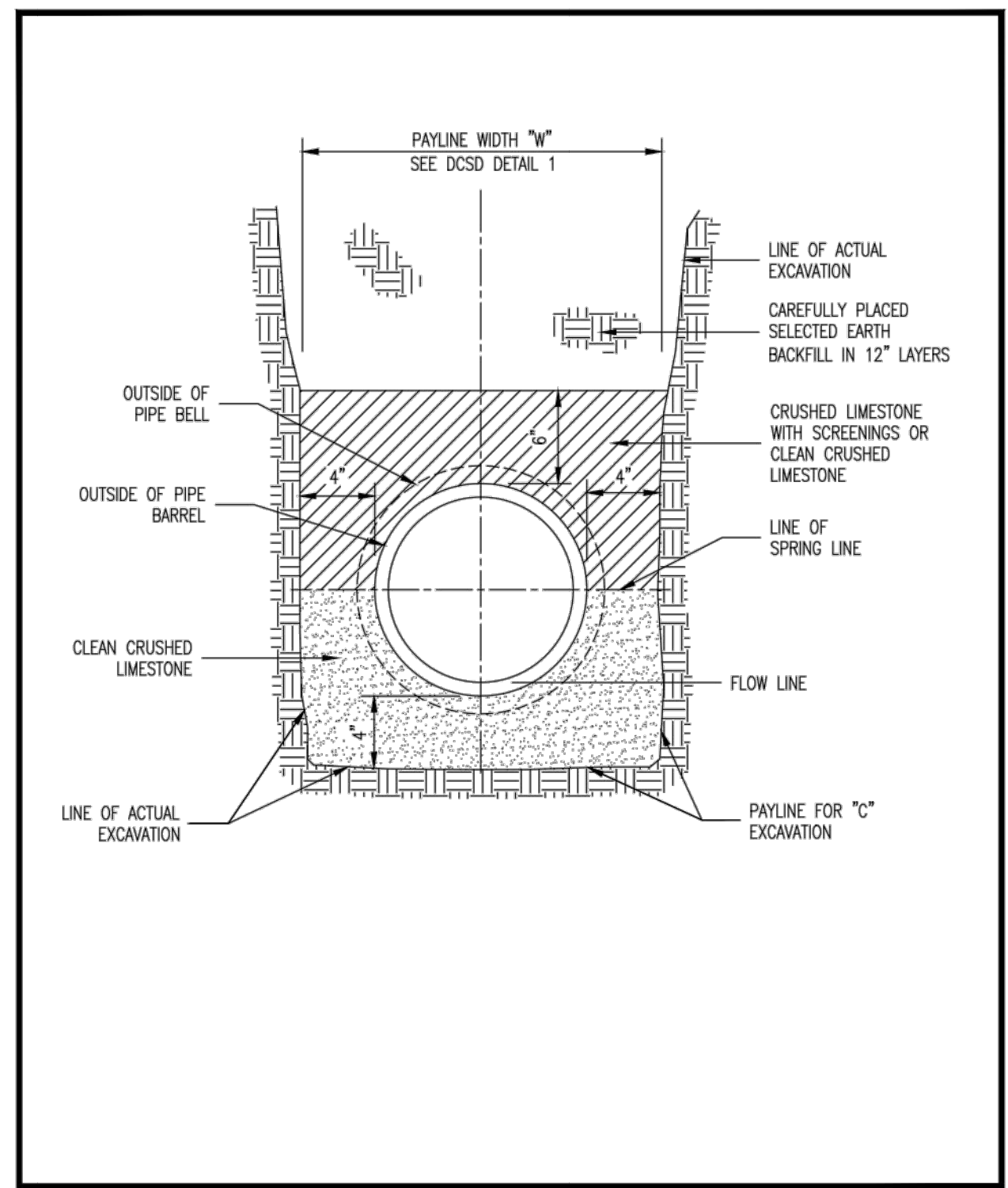


ROUND PIPE				HORIZONTAL ELLIPTICAL PIPE			
INSIDE DIAMETER OF PIPE (INCHES)	"W" PAYLINE WIDTH OF TRENCH (INCHES)	"W" PAYLINE WIDTH OF TRENCH (FEET)	PAY-VOLUMES CONCRETE ENCASUREMENT (CU. FT. PER FT.)	INSIDE DIAMETER OF PIPE (INCHES)	"W" PAYLINE WIDTH OF TRENCH (INCHES)	"W" PAYLINE WIDTH OF TRENCH (FEET)	PAY-VOLUMES CONCRETE ENCASUREMENT (CU. FT. PER FT.)
4	30	2.50	3.28				
6	30	2.50	3.59				
8	30	2.50	3.87				
10	30	2.50	4.09				
12	30	2.50	4.25				
15	36	3.00	5.55				
18	36	3.00	5.77				
21	39	3.25	6.61				
24	42	3.50	7.39	14 x 23	41	3.42	5.94
27	45	3.75	8.18	19 x 30	49	4.08	7.68
30	49	4.08	9.30	22 x 34	53	4.42	8.61
33	53	4.42	10.53	24 x 38	58	4.83	9.70
36	56	4.67	11.43	27 x 42	62	5.17	10.71
39				29 x 45	66	5.50	11.72
42				32 x 49	71	5.92	13.14
42	63	5.25	13.38	34 x 53	75	6.25	14.05
48	70	5.83	15.67	38 x 60	83	6.92	16.18
54	77	6.42	18.15	43 x 68	92	7.67	18.81
60	84	7.00	20.73	48 x 76	101	8.42	21.59
66	91	7.58	23.45	53 x 83	109	9.08	24.35
72	98	8.17	26.37	58 x 91	118	9.83	27.45
78	105	8.75	29.39	63 x 98	126	10.50	30.50
84	112	9.33	32.57	68 x 106	135	11.25	33.91
90	119	9.92	35.90	72 x 113	143	11.92	36.99
96	126	10.50	39.37	77 x 121	152	12.67	40.69
102	133	11.08	42.99	82 x 128	160	13.33	44.45
108	140	11.67	46.75	87 x 136	168	14.00	47.79
114	147	12.25	50.66	92 x 143	176	14.67	51.70
120	154	12.83	54.72	97 x 151	185	15.42	56.01
126	161	13.42	58.92				
132	168	14.00	63.27	106 x 166	202	16.83	64.48
144	182	15.17	72.40	116 x 180	218	18.17	73.59

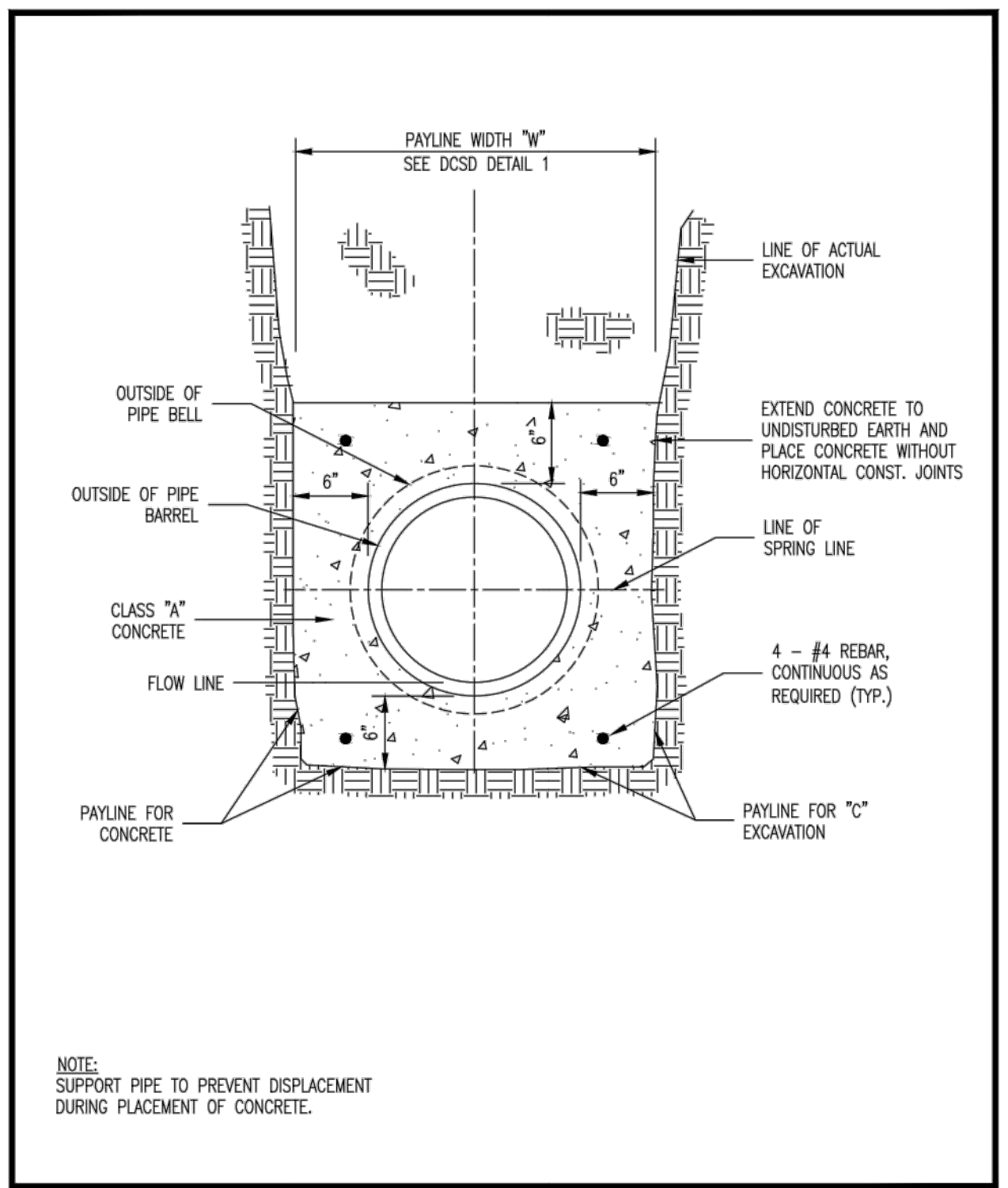
Duckett Creek Sanitary District
 PAYLINE WIDTHS OF TRENCH AND PAY-QUANTITIES OF CONCRETE
 Drawn By: BSM, App By: KLA, Detail No. 1
 Check By: MDOB, Date: DEC. 2015



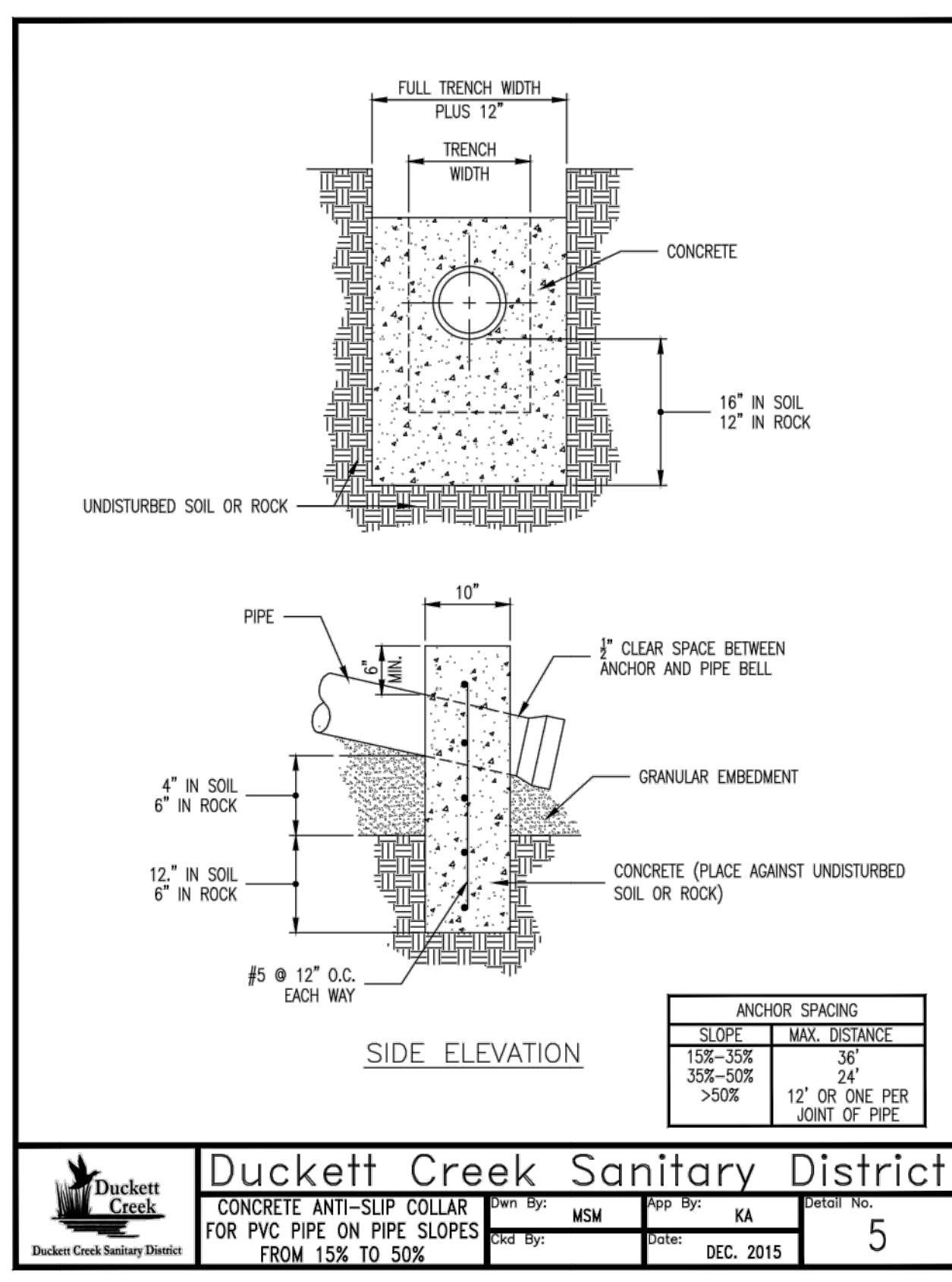
Duckett Creek Sanitary District
 PAYLINE LIMITS FOR EXCAVATION
 Drawn By: BSM, App By: KLA, Detail No. 2
 Check By: MDOB, Date: DEC. 2015



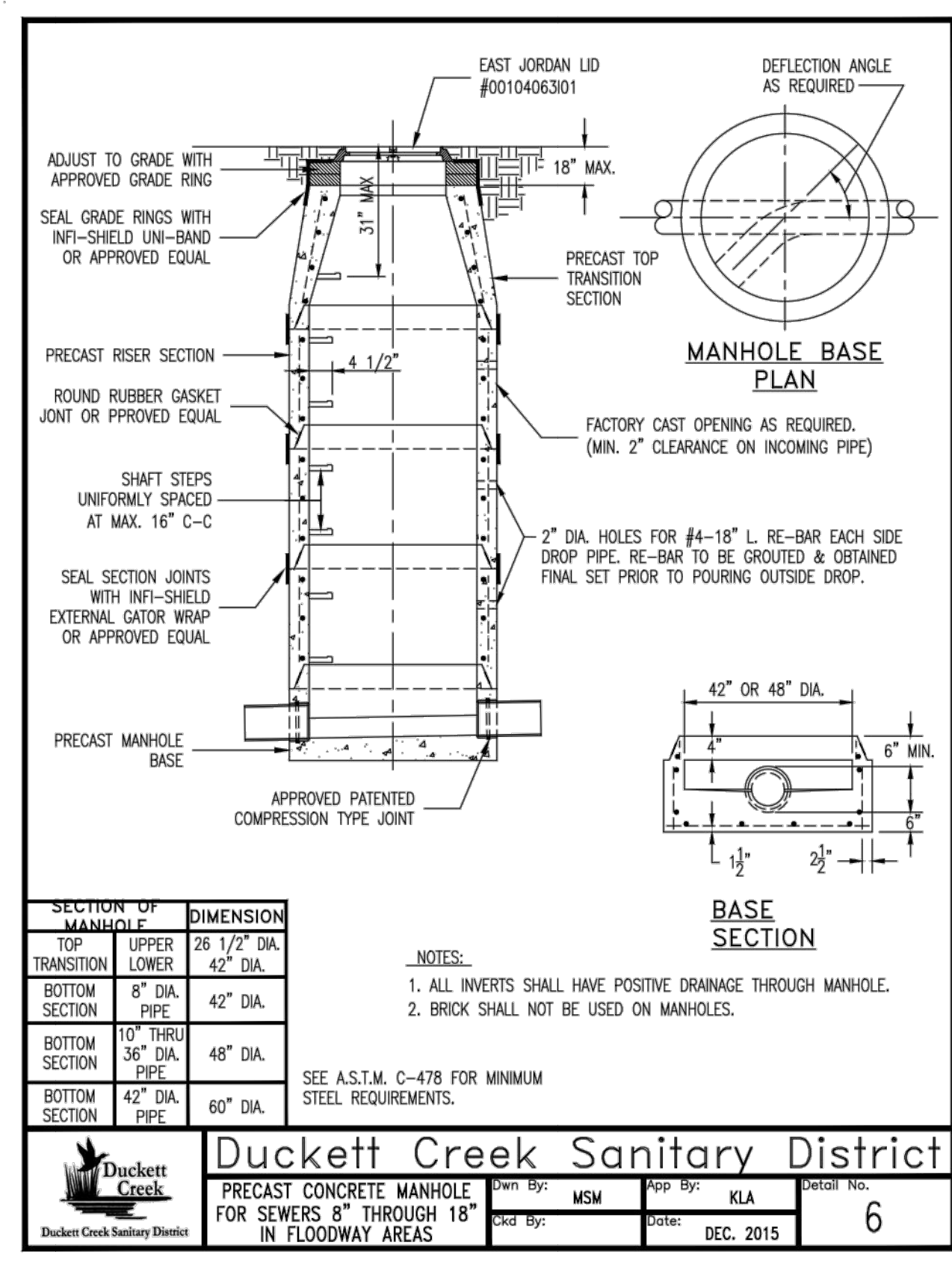
Duckett Creek Sanitary District
 PIPE BEDDING CLASS "C" (FOR ALL EXCEPT REINFORCED CONCRETE PIPE)
 Drawn By: BSM, App By: KA, Detail No. 3
 Check By: MDOB, Date: DEC. 2015



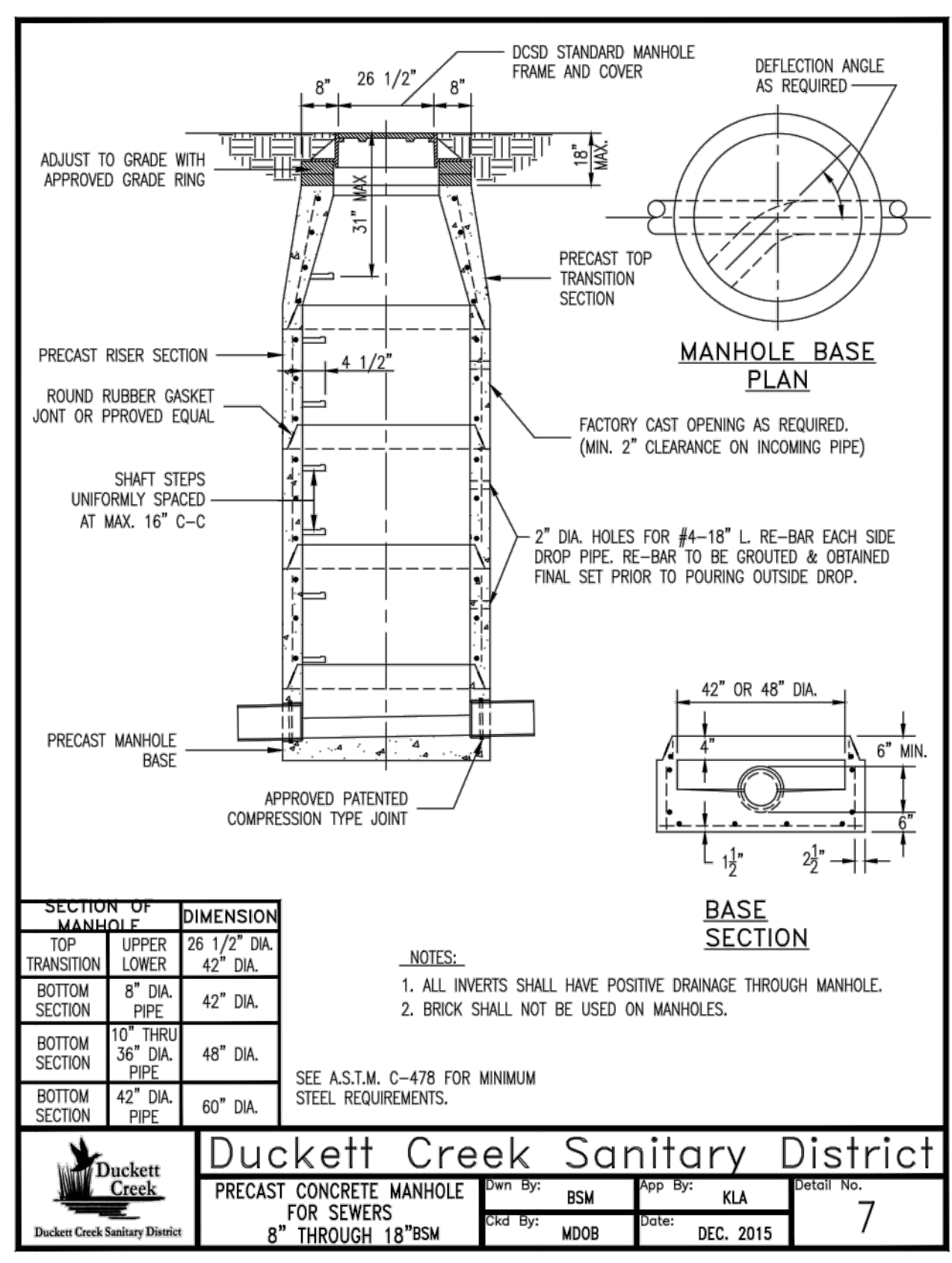
Duckett Creek Sanitary District
 TYPICAL CONCRETE ENCASUREMENT
 Drawn By: BSM, App By: KA, Detail No. 4
 Check By: MDOB, Date: DEC. 2015



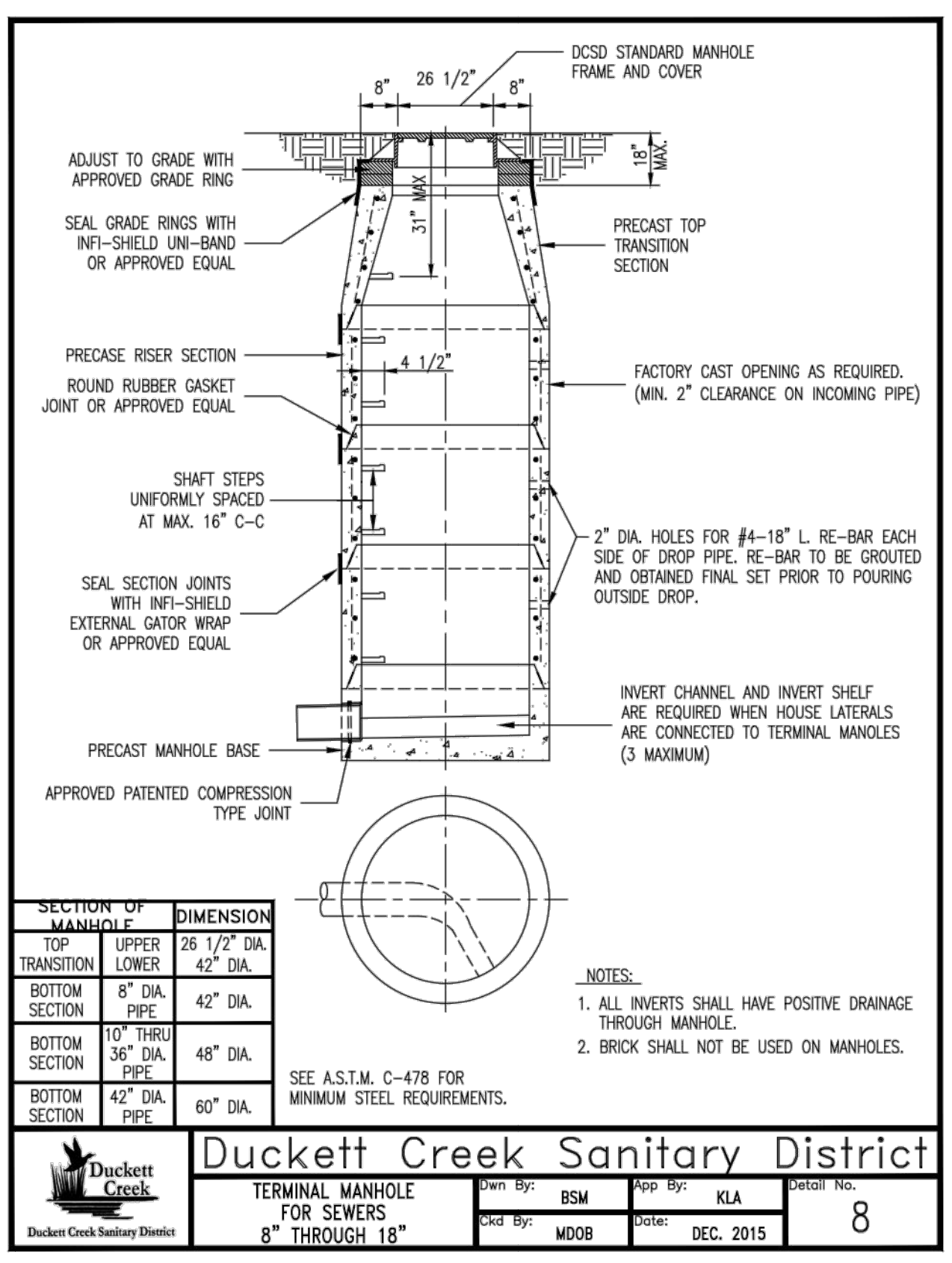
Duckett Creek Sanitary District
 CONCRETE ANTI-SLIP COLLAR FOR PVC PIPE ON PIPE SLOPES FROM 15% TO 50%
 Drawn By: MSM, App By: KA, Detail No. 5
 Check By: MDOB, Date: DEC. 2015



Duckett Creek Sanitary District
 PRECAST CONCRETE MANHOLE FOR SEWERS 8" THROUGH 18" IN FLOODWAY AREAS
 Drawn By: MSM, App By: KLA, Detail No. 6
 Check By: MDOB, Date: DEC. 2015



Duckett Creek Sanitary District
 PRECAST CONCRETE MANHOLE FOR SEWERS 8" THROUGH 18"
 Drawn By: BSM, App By: KLA, Detail No. 7
 Check By: MDOB, Date: DEC. 2015



Duckett Creek Sanitary District
 TERMINAL MANHOLE FOR SEWERS 8" THROUGH 18"
 Drawn By: BSM, App By: KLA, Detail No. 8
 Check By: MDOB, Date: DEC. 2015

PROJECT TITLE
 IMPROVEMENT PLANS
 THE VILLAGES AT
 MONTRACHET
 DETAILS

PICKETT, RAY & SILVER INC
 CIVIL ENGINEERING, LAND SURVEYING,
 AND NATURAL RESOURCES SERVICES
 St. Peters, MO 63376
 22 Richmond Center Court
 St. Peters, MO 63376
 Phone (636) 397-1211 Fax (636) 397-1104
 www.prs3.com 1-800-708-3918

ENGINEER'S AUTHENTICATION
 THE RESPONSIBILITY FOR PROFESSIONAL ENGINEERING LIABILITY ON THIS PROJECT IS LIMITED TO THE SET OF PLANS AUTHENTICATED BY THE SEAL, SIGNATURE, AND DATE HEREON ATTACHED. RESPONSIBILITY IS DISCLAIMED FOR ALL OTHER ENGINEERING PLANS PROVIDED IN THIS PROJECT AND SPECIFICALLY EXCLUDES REVISIONS AFTER THIS DATE UNLESS REAUTHENTICATED.
PICKETT, RAY & SILVER, INC. MO LICENSE #000035
KARL A. SCHOENIKE
 PROFESSIONAL ENGINEER
 MISSOURI
 KARL A. SCHOENIKE, P.E.
 PROFESSIONAL ENGINEER LICENSE 2003015039
 01-25-16 ELECTRONIC SEAL

Developer / Owner Information
MONTRACHET DEVELOPMENT LLC
 218 Chesterfield Towne Centre
 Chesterfield, Missouri 63005
 Phone: 636-550-6900

P+Z No. 15-15.01
 City No. 15-742-SP
 Page No.

PWS #2 APPROVED 12/30/15
 CITY OF O'FALLON APPROVED 01/25/16
 DCSD APPROVED 11/30/15 PERMIT NUMBER 2015-2-005

\\PFS-SBS201\Projects\14055\MCH00\Design\CD\TRUP\Improvement_Plan\12-14055_DETAILS.dwg