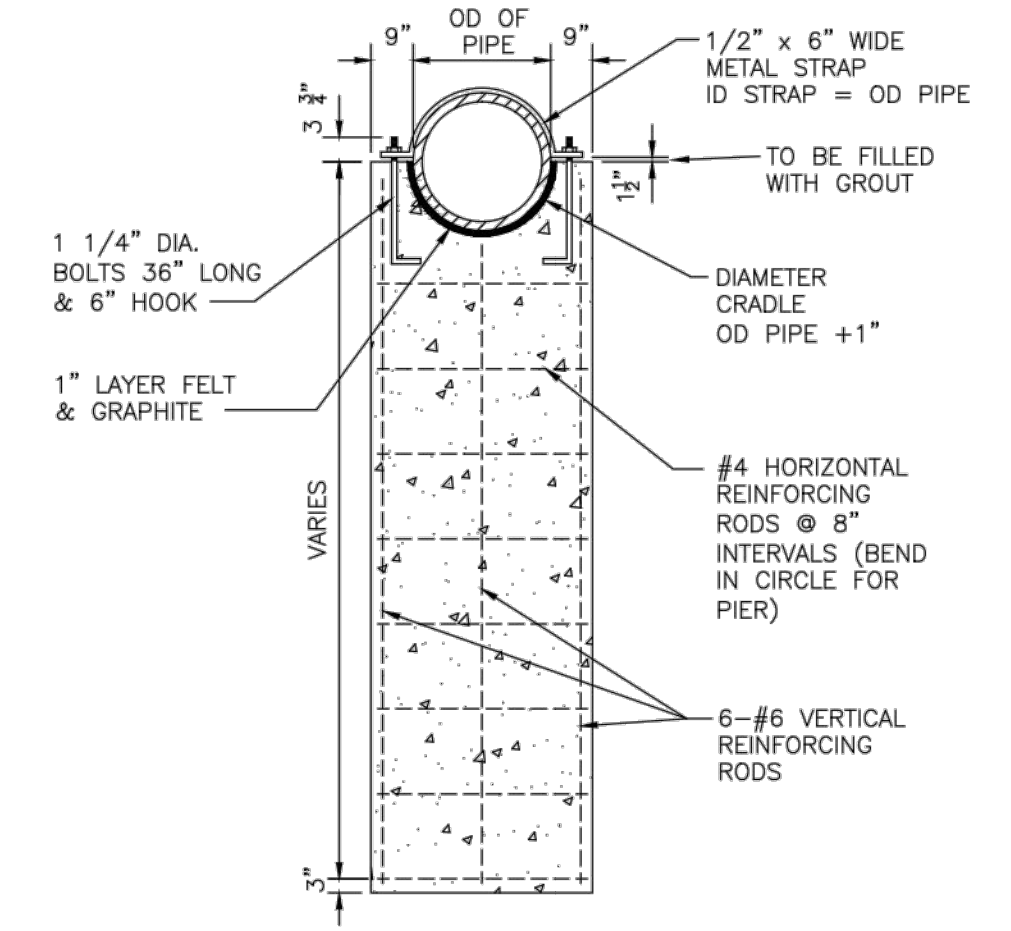


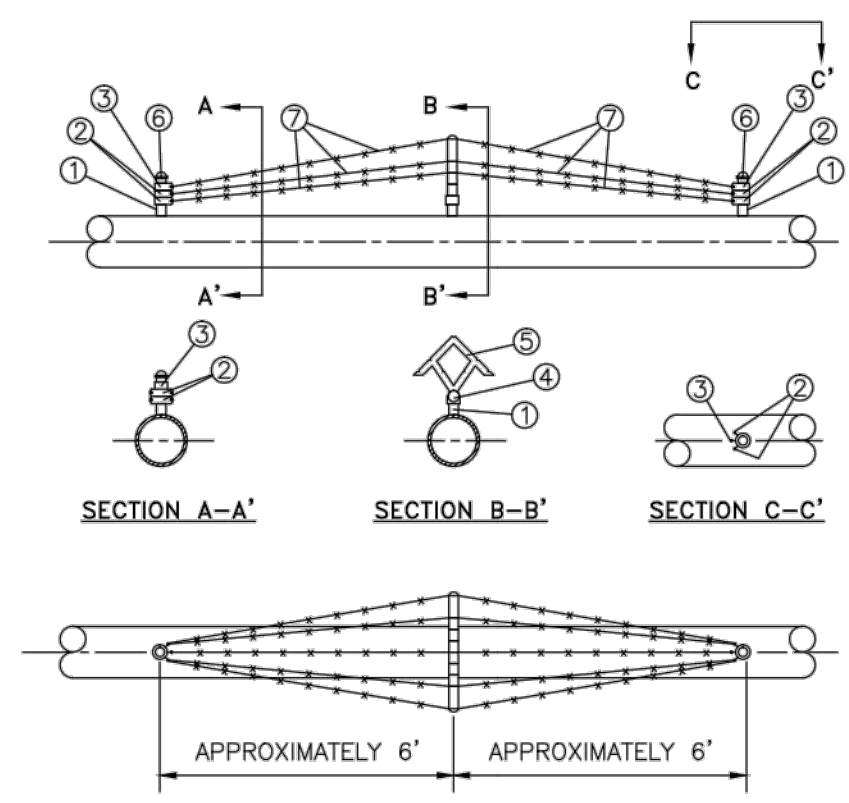
Duckett Creek Sanitary District

AERIAL CREEK CROSSING DETAIL	Own By: BSM Ckd By: MDOB	App By: KLA Date: DEC. 2015	Detail No. 30A
------------------------------	-----------------------------	--------------------------------	----------------



Duckett Creek Sanitary District

CONCRETE PIER DETAIL	Own By: BSM Ckd By: MDOB	App By: KA Date: DEC. 2015	Detail No. 30B
----------------------	-----------------------------	-------------------------------	----------------



BILL OF MATERIAL

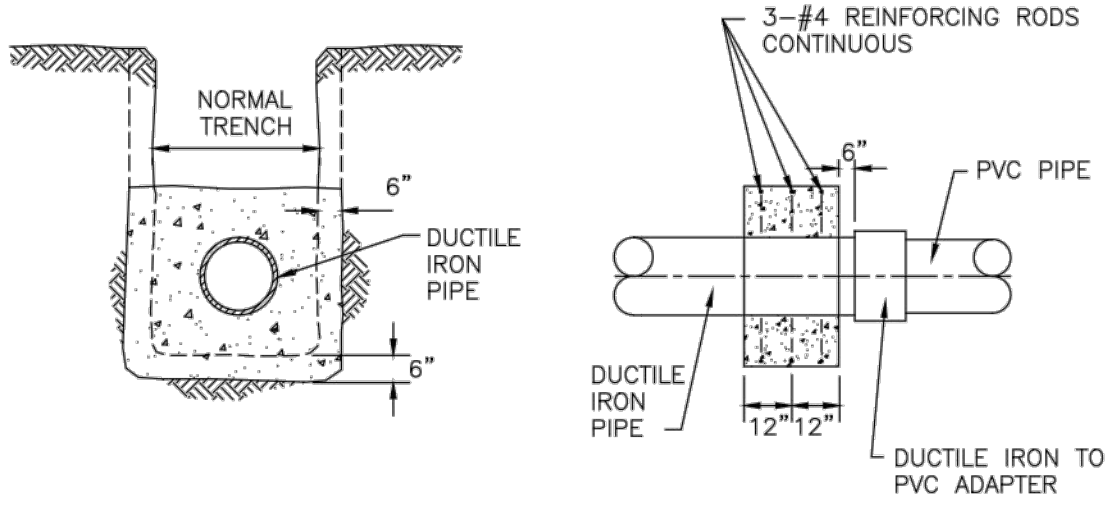
NO.	QTY	STK. NO.	SIZE	DESCRIPTION
1	6*	38290	1 1/2" x 5"	NIPPLE, STL. SCRD.
2	8		1 1/2" OD, #7 90°	BRACE BAND, GALV.
3	4		1 1/2" OD, #6	BRACE BAND, GALV.
4	2		1 1/2" OD x 59U	UNIVERSAL BASE, GALV.
5	2		NORTHLAND 5 STRD.	ARM, STL., GALV. W/BOLT
6	4		NORTHLAND #1 1" GAP, ACCORN. GALV. W/SET SCREW	
7	1**	59850	4 POINT, 12 1/2 GAUGE	WIRE, BARBED, GALV.

- NOTES:**
- "BILL OF MATERIALS" PROVIDES SUFFICIENT MATERIAL FOR TWO BARRICADES.
 - LOCATION OF BARRICADES ON PIPING SYSTEM TO BE AS SPECIFIED ON APPROVED CONSTRUCTION DRAWINGS.
 - TWO BARRICADES WILL BE REQUIRED, ONE AT EACH END OF THE CROSSING AS A DETERRENT AGAINST FOOT TRAFFIC. IN SOME INSTANCES ADDITIONAL BARRICADES MAY BE REQUIRED.
 - COAT ANY EXPOSED PIPE WITH MASTIC, STOCK #51857.
- * 1 1/2" BARE PIPE ON JOB MAY BE SUBSTITUTED FOR 1 1/2" x 5" NIPPLE. SCREW THREADS NOT NECESSARY.
 ** CONTACT SUPERVISOR BEFORE ORDERING BARBED WIRE. BARBED WIRE SUPPLIED IN 1320' ROLLS ONLY, NOT RETURNABLE.

Duckett Creek Sanitary District

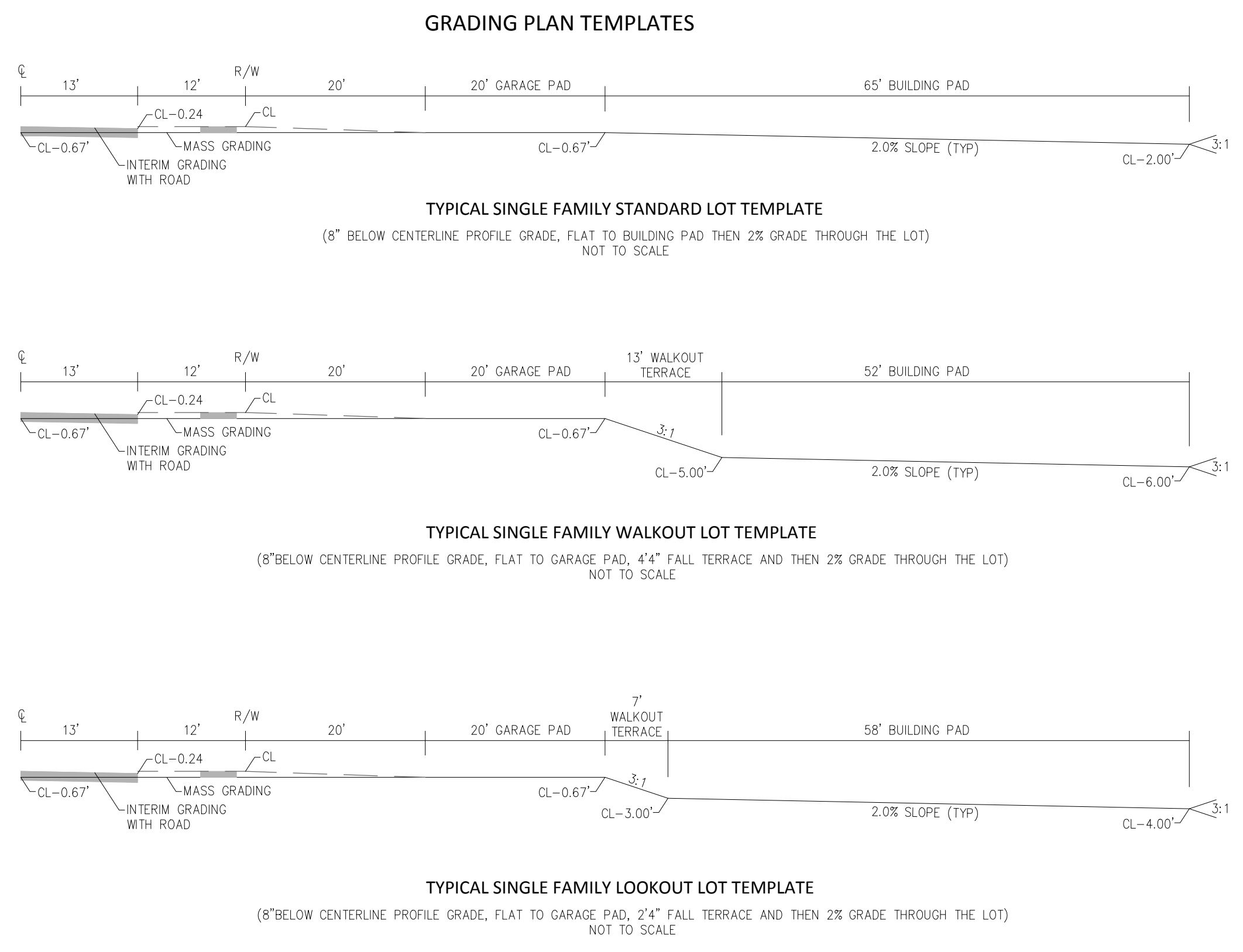
ARIEL CROSSING BARRIER DETAIL	Own By: BSM Ckd By: MDOB	App By: KA Date: DEC. 2015	Detail No. 30C
-------------------------------	-----------------------------	-------------------------------	----------------

CROSSING NO.	TOTAL LENGTH OF PIPE L	LENGTH BETWEEN C OF PIPE SUPPORTS I	CARRIER PIPE OUTSIDE DIAMETER D	CARRIER PIPE WALL THICKNESS (IN.) T
1				
2				



Duckett Creek Sanitary District

AERIAL CROSSING CONCRETE COLLAR DETAIL	Own By: BSM Ckd By: MDOB	App By: KA Date: DEC. 2015	Detail No. 30D
--	-----------------------------	-------------------------------	----------------



PROJECT TITLE
IMPROVEMENT PLANS
THE VILLAGES AT
MONTRACHET
DETAILS

PICKETT, RAY & SILVER INC
 CIVIL ENGINEERING, LAND SURVEYING,
 AND NATURAL RESOURCES SERVICES
 St. Peters
 22 Richmond Center Court
 St. Peters, MO 63376
 Phone (636) 397-1211 Fax (636) 397-1104
 www.prs.com 1-800-708-3918

ENGINEER'S AUTHENTICATION
 THE RESPONSIBILITY FOR PROFESSIONAL ENGINEERING LIABILITY ON THIS PROJECT IS SEVERELY LIMITED TO THE SET OF PLANS AUTHENTICATED BY THE SEAL, SIGNATURE, AND DATE HEREON ATTACHED. RESPONSIBILITY IS DISINGULATED FOR ALL OTHER ENGINEERING PLANS PROVIDED IN THIS PROJECT AND SPECIFICALLY EXCLUDES REVISIONS AFTER THIS DATE UNLESS REAUTHENTICATED.
PICKETT, RAY & SILVER, INC. MO
 LICENSE #000335

KARL A. SCHOENIKE
 PROFESSIONAL ENGINEER
 NUMBER RE-2003015038

01-25-16
 KARL A. SCHOENIKE, P.E.
 PROFESSIONAL ENGINEER LICENSE 2003015038

Developer / Owner Information
MONTRACHET DEVELOPMENT LLC
 218 Chesterfield Towne Centre
 Chesterfield, Missouri 63005
 Phone: 636-530-6900

P+Z No. 15-15.01
City No. 15-742-SP
Page No.

\\PFS-SBS2011\Projects\14055\MCH0\dwg\Design\OUTPUT\Improvement Plans\12-14055-DETAILS.dwg