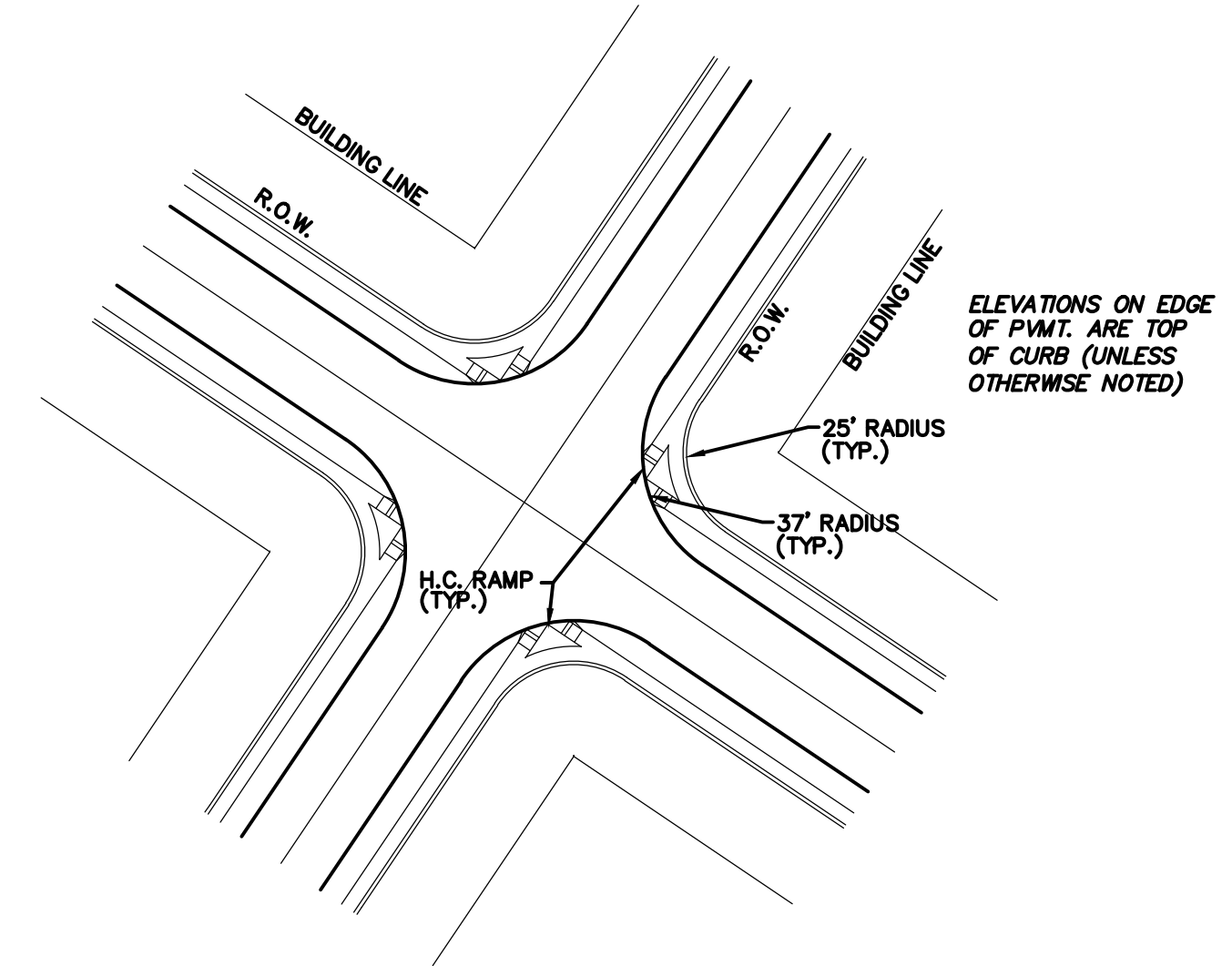
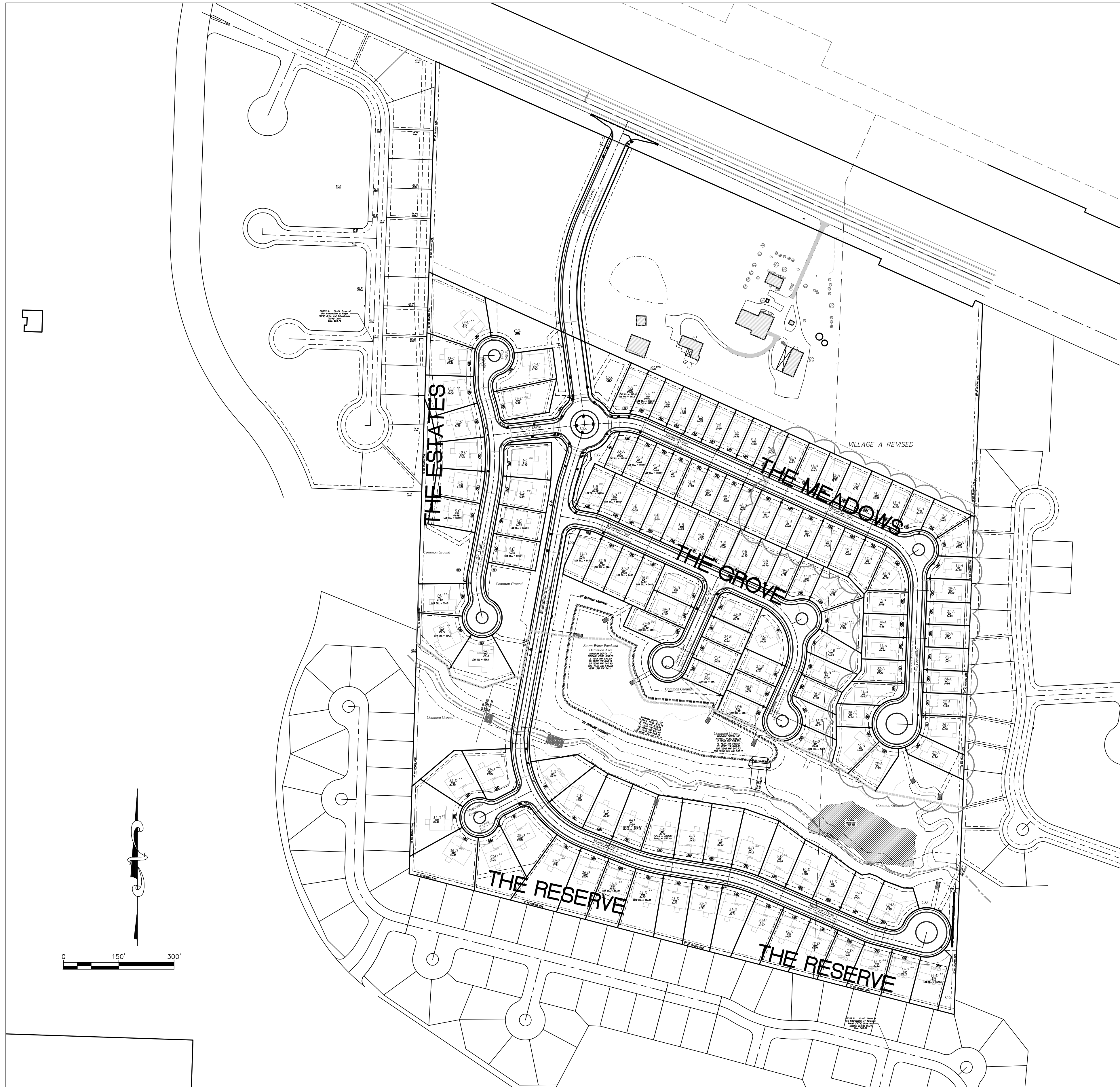
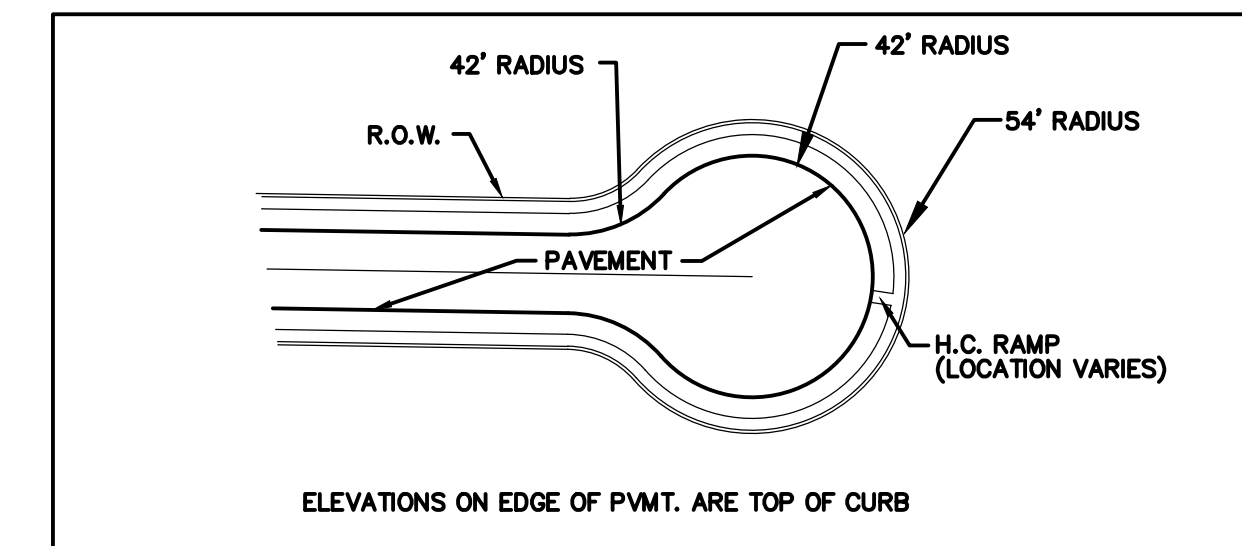


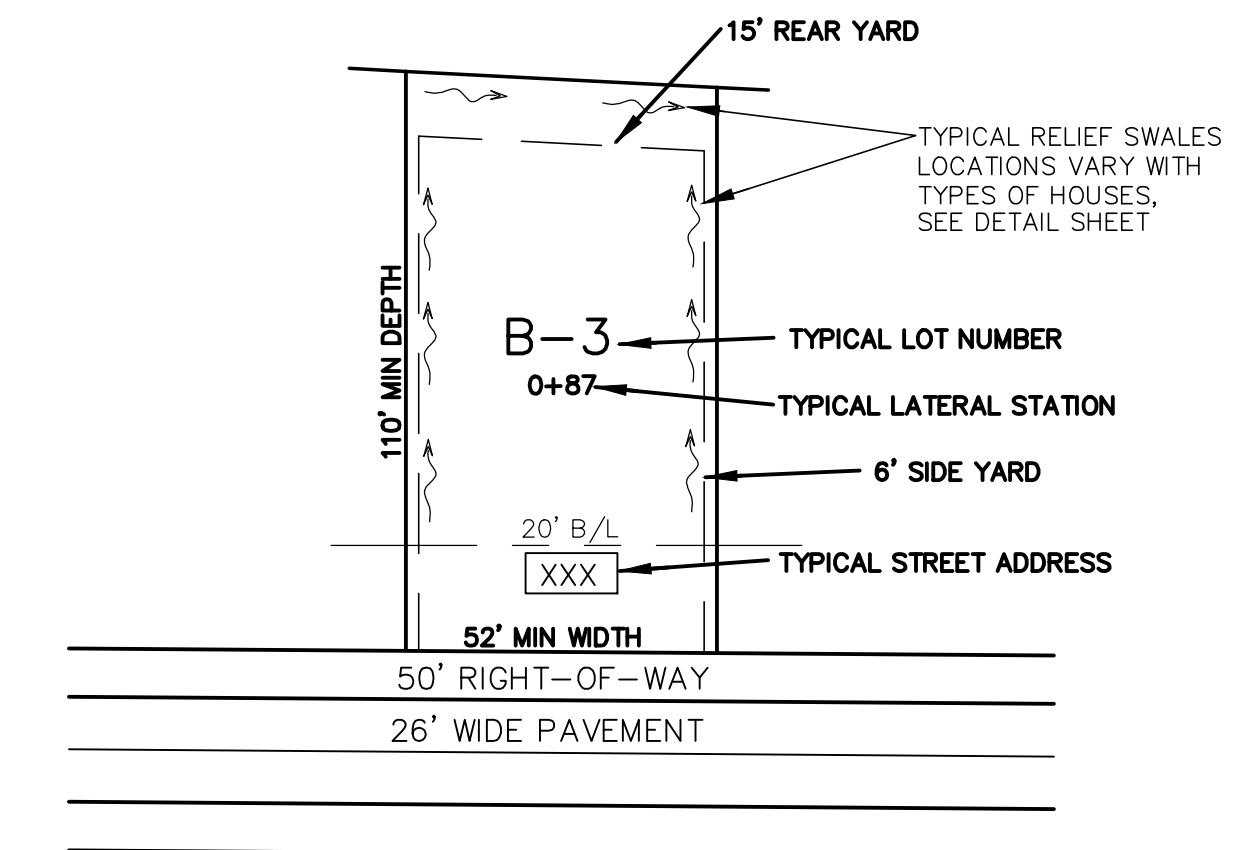
P:\14055.MCH0.dwg\design\output\improvement Plans REVISED PHASE A\01-14055 COVER SHEET.dwg



TYPICAL INTERSECTION DETAIL
N.T.S.



TYPICAL CUL-DE-SAC DETAIL
N.T.S.



TYPICAL LOT DETAIL
N.T.S.

VILLAGE B MAXIMUM LOT COVERAGE = 45% CITY OF O'FALLON
COMMUNITY DEVELOPMENT DEPARTMENT
ACCEPTED FOR CONSTRUCTION
BY: [Signature] DATE **December 6, 2016**
PROFESSIONAL ENGINEER'S SEAL
INDICATES RESPONSIBILITY FOR DESIGN
City of O'Fallon Standard Subdivision Notes and Details - June 2010

PROJECT TITLE
IMPROVEMENT PLANS
THE VILLAGES AT
MONTRACHET (REVISED)

PICKETT, RAY & SILVER INC
CIVIL ENGINEERING, LAND SURVEYING,
AND NATURAL RESOURCES SERVICES
St. Peters
22 Richmond Center Court
St. Peters, MO 63376
Phone (636) 397-1211 Fax (636) 397-1104
www.prs3.com 1-800-708-3918

ENGINEER'S AUTHENTICATION
THE RESPONSIBILITY FOR PROFESSIONAL ENGINEERING
LIABILITY ON THIS PROJECT IS LIMITED TO THE
SET OF PLANS AUTHENTICATED BY THE SEAL, SIGNATURE,
AND DATE HEREON ATTACHED. RESPONSIBILITY IS
DISCLAIMED FOR ALL OTHER ENGINEERING PLANS
INVOLVED IN THIS PROJECT AND SPECIFICALLY EXCLUDES
REVISIONS AFTER THIS DATE UNLESS REAUTHENTICATED.
PICKETT, RAY & SILVER, INC. MO
LICENSE #000036
[Signature]
STATE OF MISSOURI
KARL ANTHONY
SCHOENIKE
NUMBER
PE-2003015039
PROFESSIONAL ENGINEER
12/06/16
ELECTRONIC SEAL
KARL A. SCHOENIKE, P.E.
PROFESSIONAL ENGINEER LICENSE 2003015039

Developer / Owner Information
MONTRACHET DEVELOPMENT LLC
218 Chesterfield Towne Centre
Chesterfield, Missouri 63005
Phone: 636-530-6900

P+Z No. 15-15.01
City No. 15-742-SP
Page No. 3 of 63
MAPKEY

CITY OF O'FALLON REVISED MONTRACHET DRIVE 12/06/2016