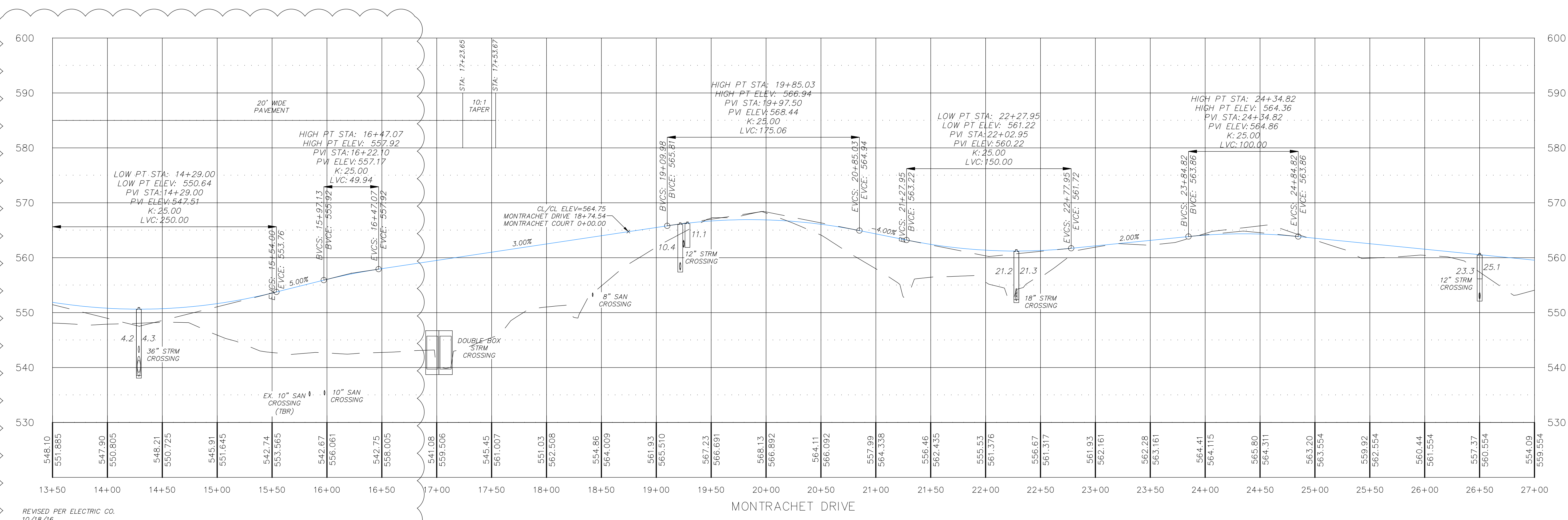
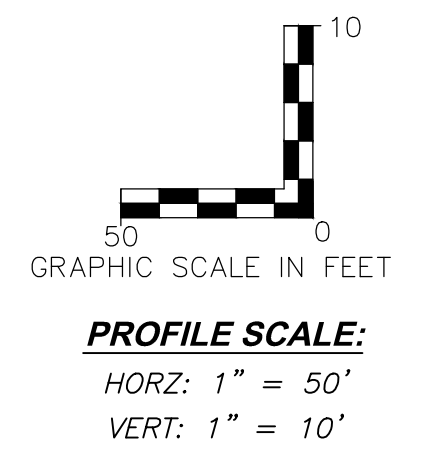
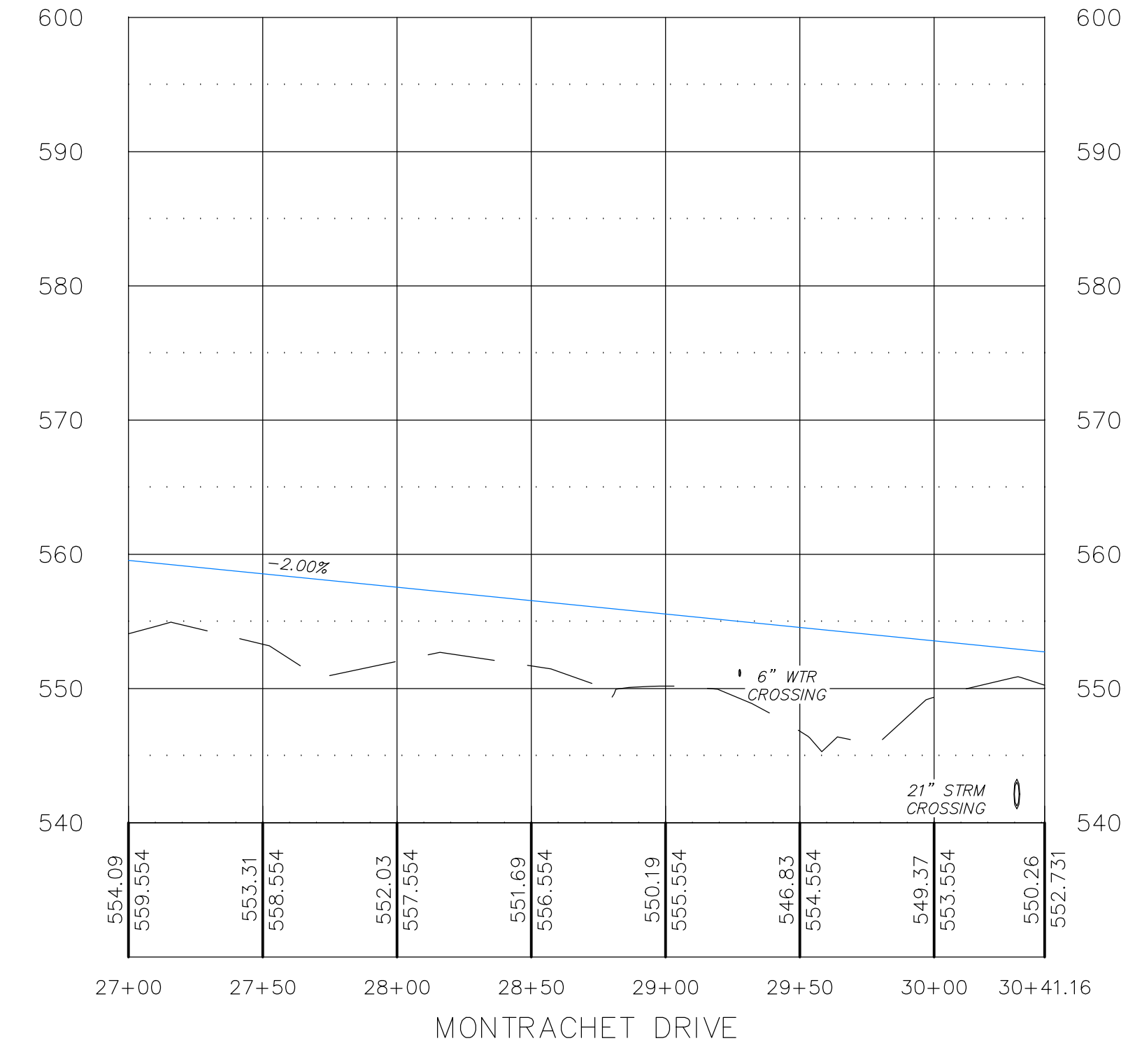


\\PFS-585201\Projects\14055.MCH00\Design\OUTPUT\Improvement Plans REVISED PHASE A\05-14055 STREET PROFILES.dwg



REVISED PER ELECTRIC CO.
10/18/16



PROFILE SCALE:
HORIZ: 1" = 50'
VERT: 1" = 10'

CITY OF O'FALLON
COMMUNITY DEVELOPMENT DEPARTMENT
ACCEPTED FOR CONSTRUCTION
BY: *[Signature]* DATE: **October 18, 2016**
PROFESSIONAL ENGINEER'S SEAL
INDICATES RESPONSIBILITY FOR DESIGN

PROJECT TITLE
IMPROVEMENT PLANS
THE VILLAGES AT
MONTRACHET (REVISED)

STREET PROFILES
PFS No. 14055MCH000R
TASK 017 FIELD BOOK 1476

PICKETT, RAY & SILVER INC
CIVIL ENGINEERING, LAND SURVEYING,
AND NATURAL RESOURCES SERVICES

St. Peters
22 Richmond Center Court
St. Peters, MO 63376
Phone (636) 397-1211 Fax (636) 397-1104
www.prs.com 1-800-708-3818

ENGINEER'S AUTHENTICATION
THE RESPONSIBILITY FOR PROFESSIONAL ENGINEERING
LIABILITY ON THIS PROJECT IS LIMITED TO THE
SET OF PLANS AUTHENTICATED BY THE SEAL, SIGNATURE,
AND DATE HEREON ATTACHED. RESPONSIBILITY IS
DISCLAIMED FOR ALL OTHER ENGINEERING PLANS
ISSUED IN THIS PROJECT AND SPECIFICALLY INCLUDES
REVISIONS AFTER THIS DATE UNLESS REAUTHENTICATED.

Karl Anthony Schoenke
STATE OF MISSOURI
KARL ANTHONY SCHOENKE
NUMBER
PE-2003015039
PROFESSIONAL ENGINEER
10/18/16
ELECTRONIC SEAL
KARL A. SCHOENKE, P.E.
PROFESSIONAL ENGINEER LICENSE 2003015039

Developer / Owner Information
MONTRACHET DEVELOPMENT LLC
218 Chesterfield Towne Centre
Chesterfield, Missouri 63005
Phone: 636-530-6900

P+Z No. 15-15.01
City No. 15-742-SP

Page No.
STREET PROFILES
23 of 63

CITY OF O'FALLON REVISED MONTRACHET DRIVE 10/19/2016