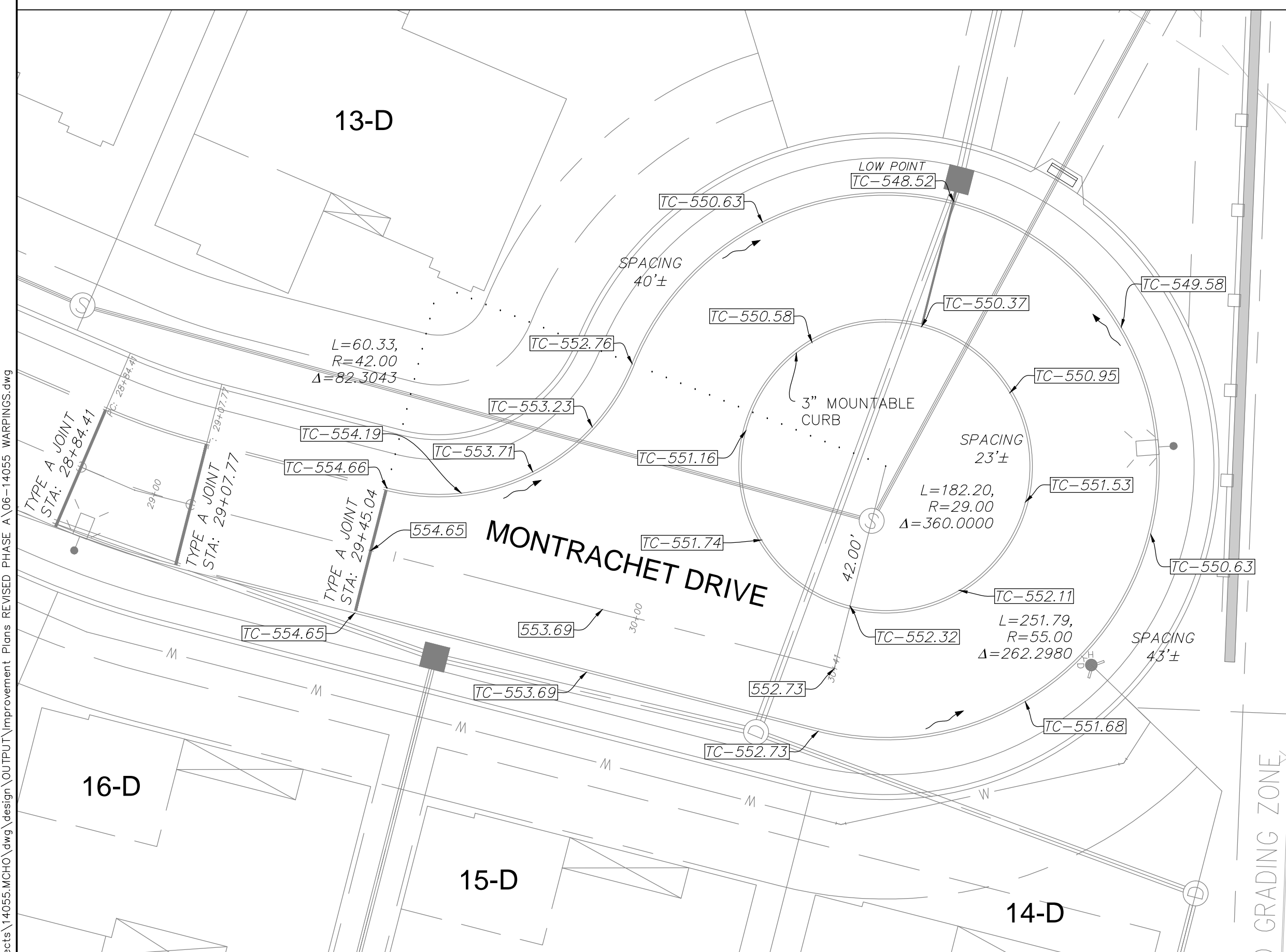
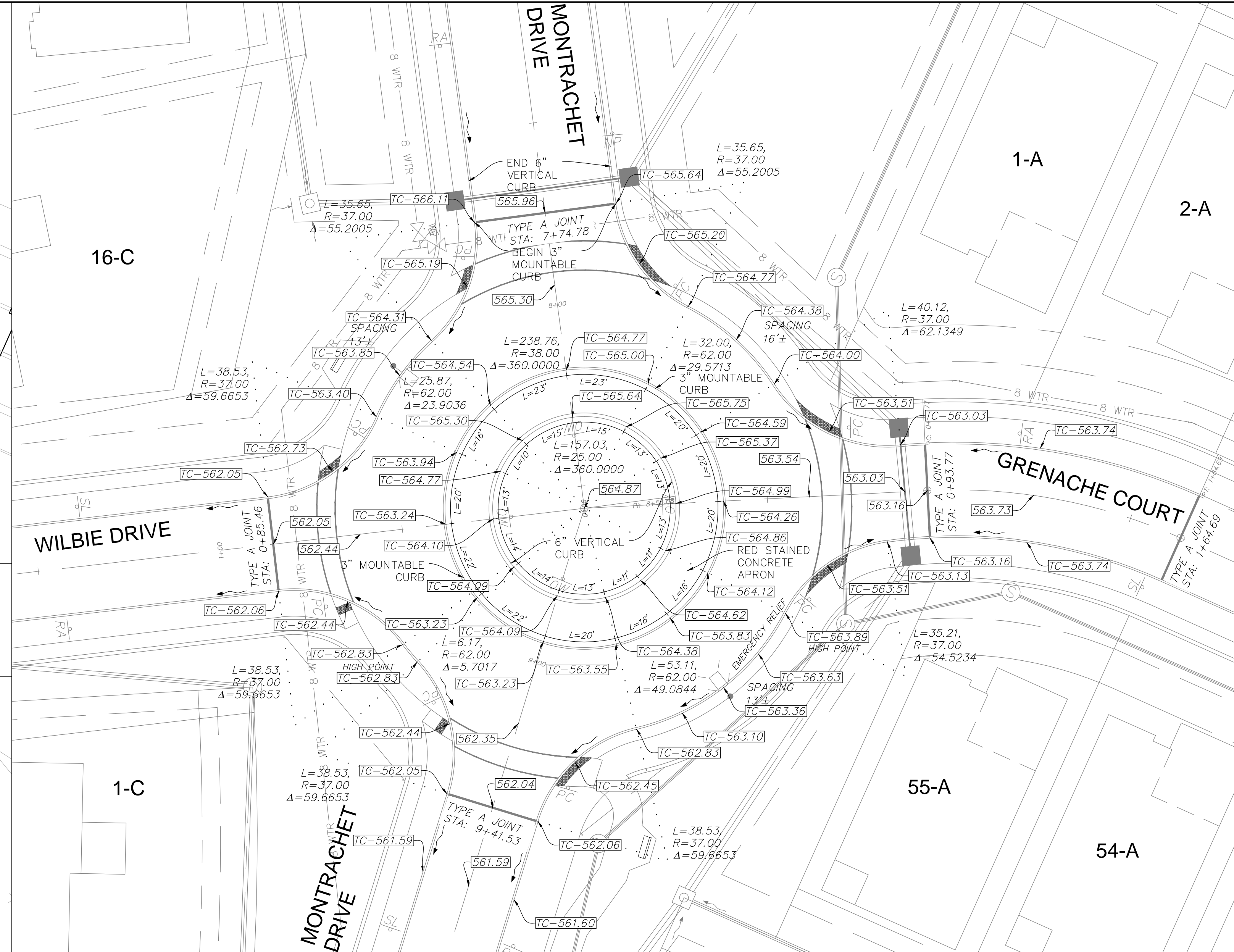


MONTRACHET DRIVE AND SOUTH OUTER 364
SCALE 1"= 20'



MONTRACHET DRIVE CUL-DE-SAC
SCALE 1"= 20'



ROUND-A-BOUT
SCALE 1"= 20'

- WARPING NOTES:**
1. ALL SPOTS LABELED AS TC ARE TOP BACK OF CURB ELEVATIONS.
 2. ALL OTHER SPOTS ARE PAVEMENT ELEVATIONS.
 3. SPOT ELEVATIONS ARE SPACED AT THE QUARTER DELTA OF THE ROUNDINGS.
 4. ALL CURBS ARE 3" (0.25') TALL, UNLESS OTHERWISE NOTED.

P:\PFS-5852011\Projects\14055.MCH00\Design\Output\Improvement Plans REVISED PHASE A\06-14055 WARPINGS.dwg
 P:\PFS-5852011\Projects\14055.MCH00\Design\Output\Improvement Plans REVISED PHASE A\06-14055 WARPINGS.dwg

PROJECT TITLE
 IMPROVEMENT PLANS
 THE VILLAGES AT
 MONTRACHET (REVISED)
PAVEMENT WARPINGS
 PFS No. 14055.MCH00.P
 TASK 017 FIELD BOOK 1476

PICKET, RAY & SILVER INC
 CIVIL ENGINEERING, LAND SURVEYING,
 AND NATURAL RESOURCES SERVICES
 St. Peters
 22 Richmond Center Court
 St. Peters, MO 63376
 Phone (636) 397-1211 Fax (636) 397-1104
 www.prs.com 1-800-708-3818

ENGINEER'S AUTHENTICATION
 THE RESPONSIBILITY FOR PROFESSIONAL ENGINEERING
 LIABILITY ON THIS PROJECT IS SEVERELY LIMITED TO THE
 SET OF PLANS AUTHENTICATED BY THE SEAL, SIGNATURE,
 AND DATE HEREON ATTACHED. RESPONSIBILITY IS
 DISCLAIMED FOR ALL OTHER ENGINEERING PLANS
 INVOLVED IN THIS PROJECT AND SPECIFICALLY EXCLUDES
 REVISIONS AFTER THIS DATE UNLESS REAUTHENTICATED.
PICKET, RAY & SILVER, INC. MO
 LICENSE #000386

 KARL A. SCHOENIKE, P.E.
 PROFESSIONAL ENGINEER LICENSE 2003015039

Developer / Owner Information
MONTRACHET DEVELOPMENT LLC
 218 Chesterfield Towne Centre
 Chesterfield, Missouri 63005
 Phone: 636-530-6900

P+Z No. 15-15.01
City No. 15-742-SP
Page No.
 PAVEMENT WARPINGS
 26 of 63

CITY OF O'FALLON REVISED PHASE A 09/28/2016