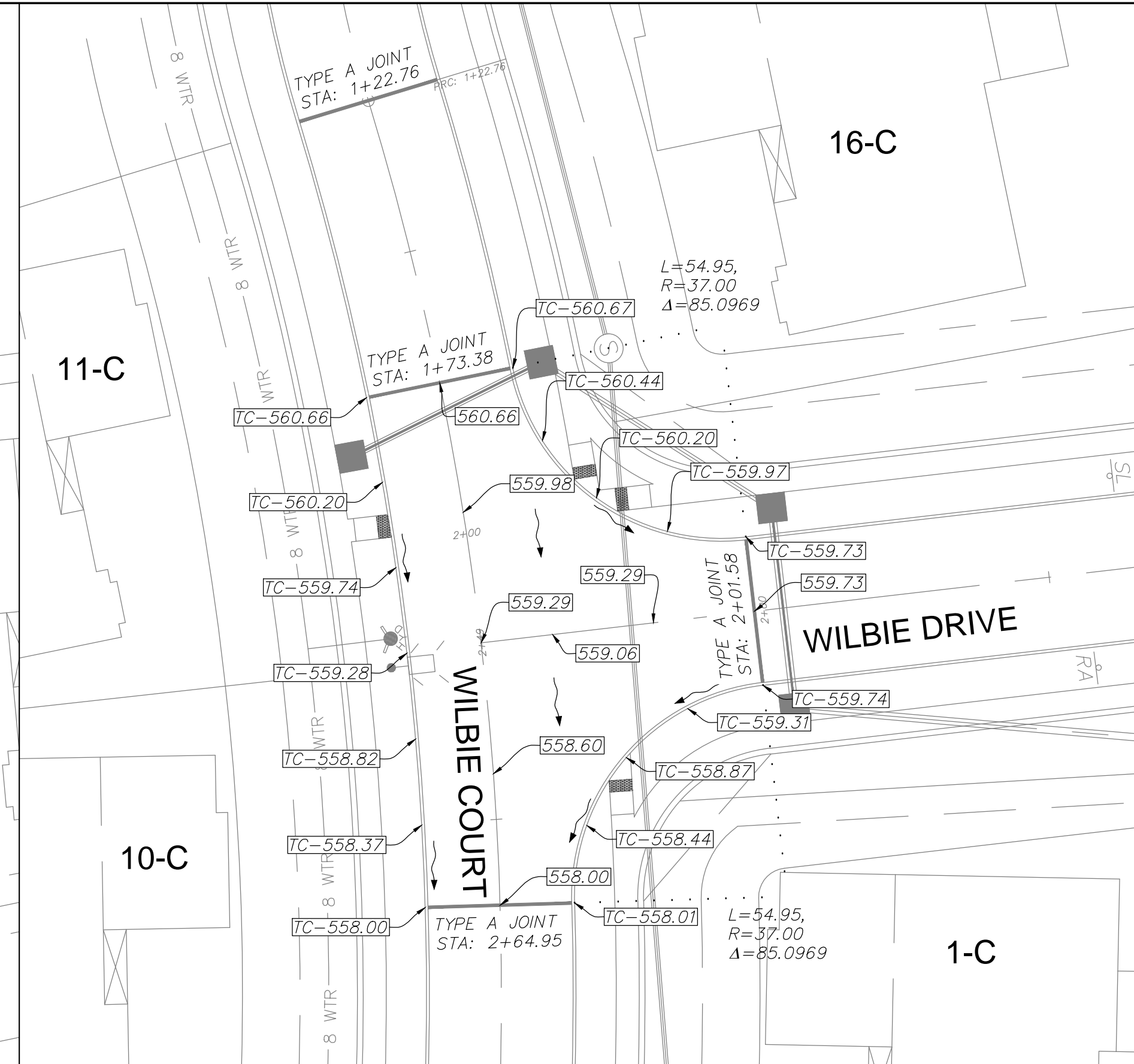
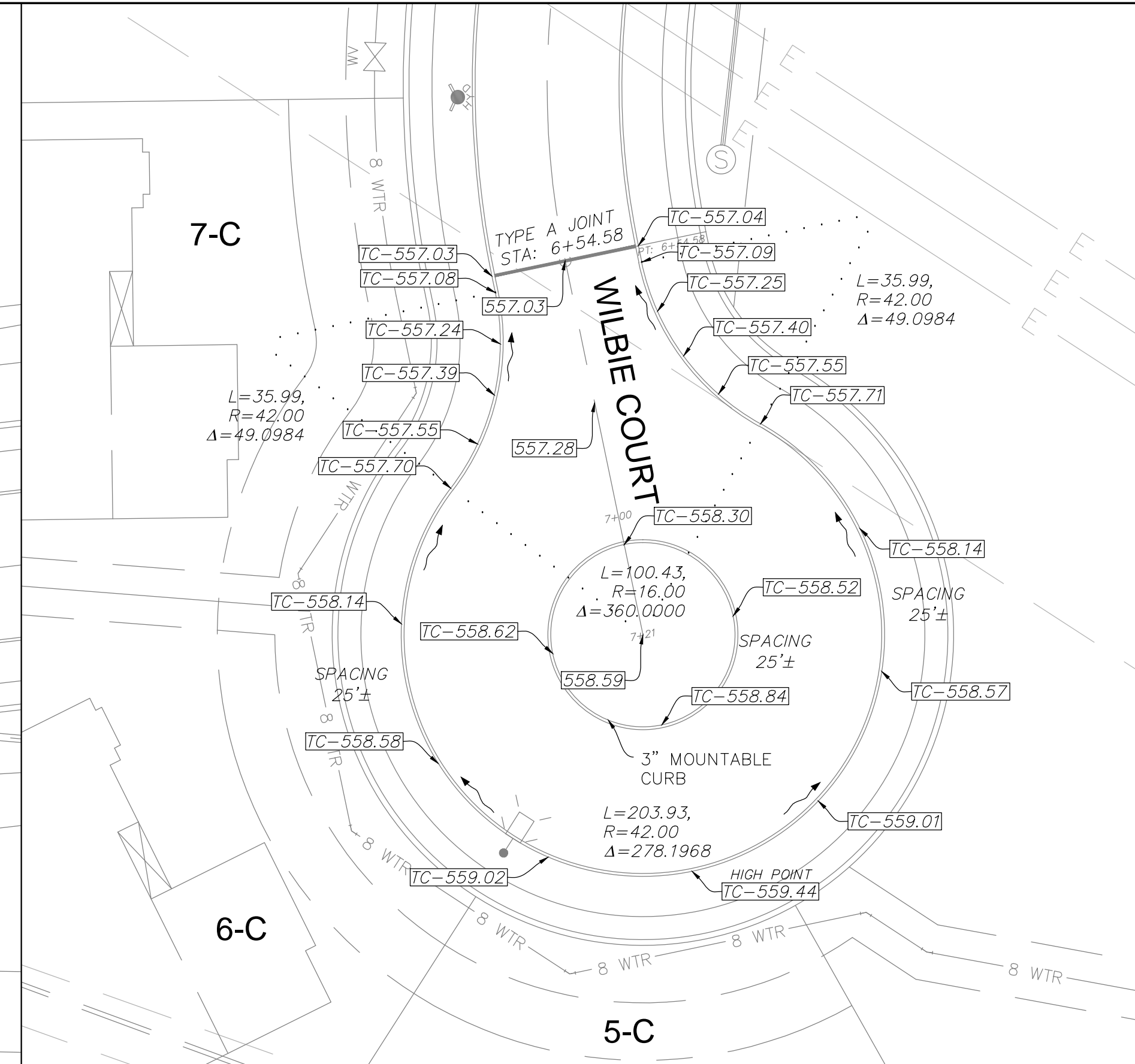


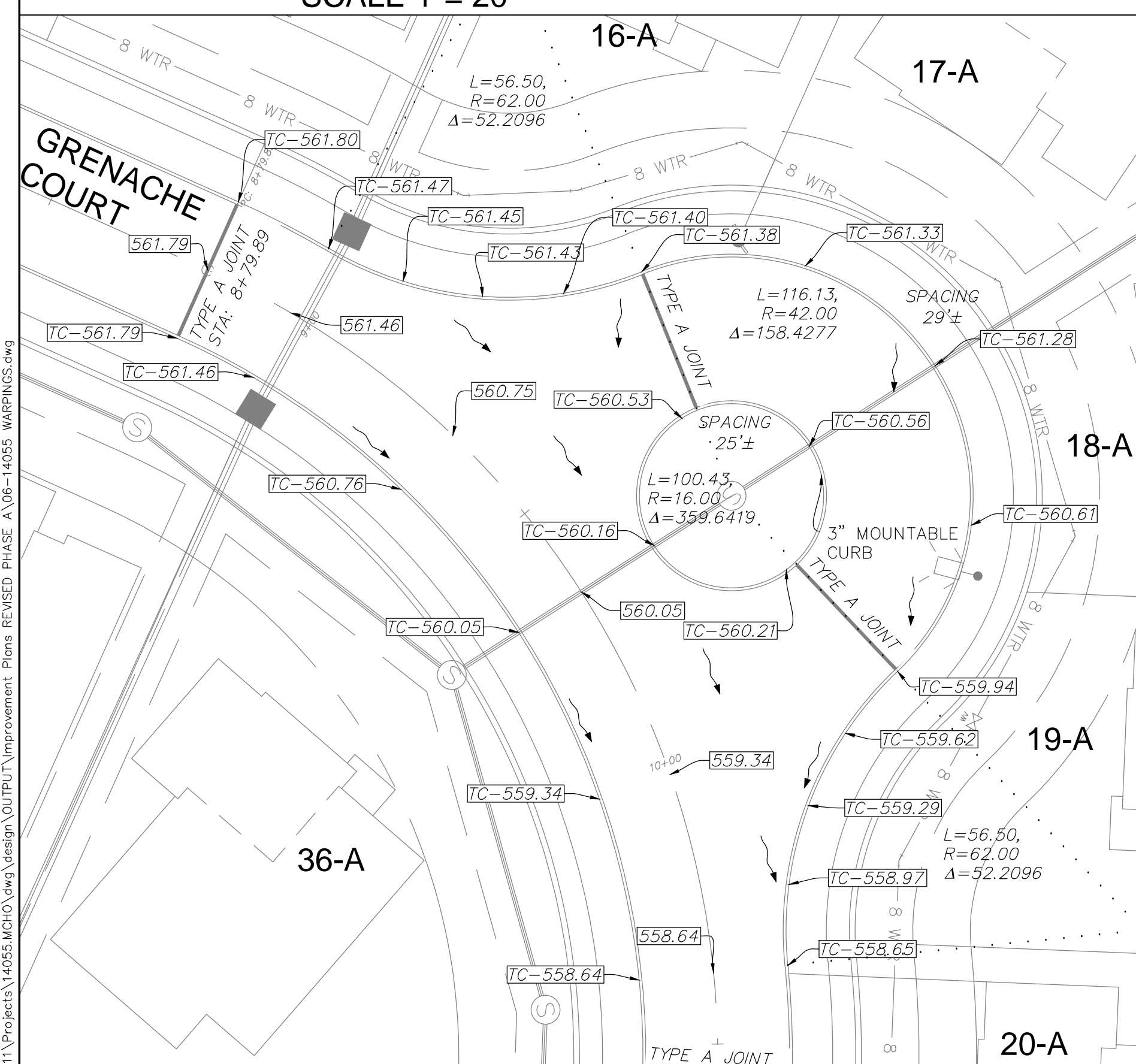
WILBIE CUL-DE-SAC NORTH  
SCALE 1"= 20'



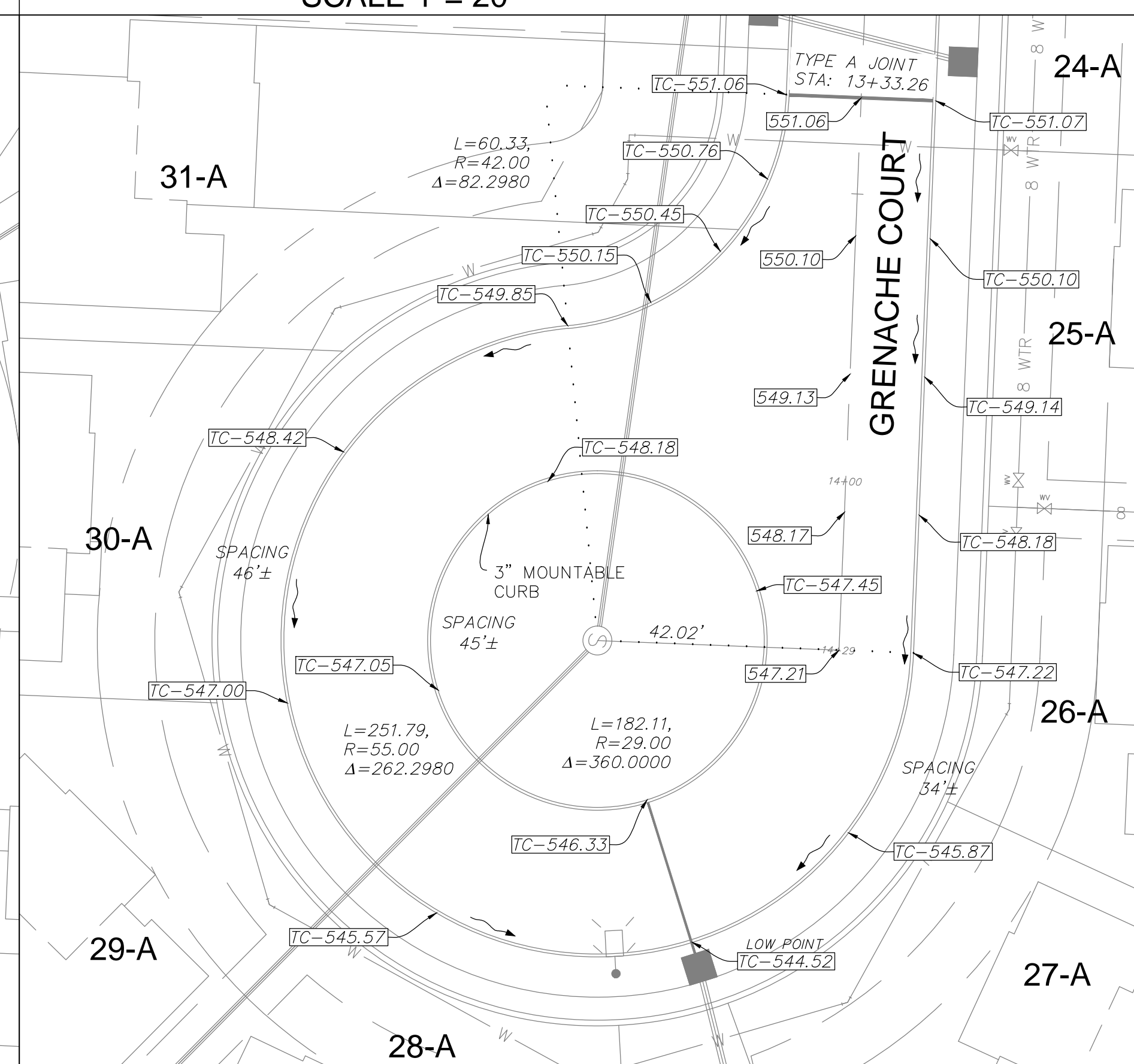
WILBIE COURT INTERSECTION  
SCALE 1"= 20'



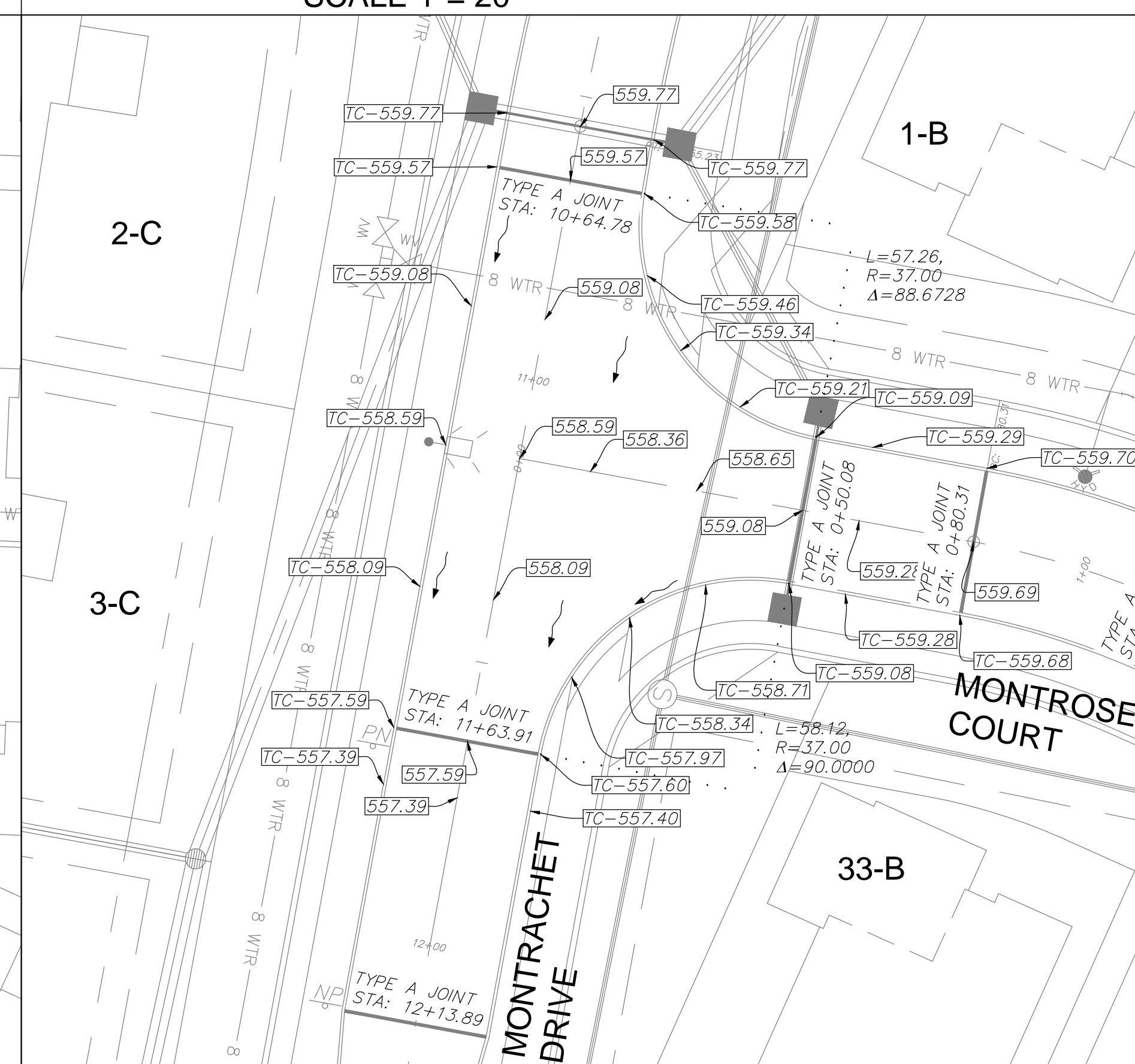
WILBIE CUL-DE-SAC SOUTH  
SCALE 1"= 20'



GRENACHE COURT EYEBROW  
SCALE 1"= 20'



GRENACHE COURT CUL-DE-SAC  
SCALE 1"= 20'



MONTRACHET DRIVE AND MONTROSE COURT  
SCALE 1"= 20'

\\PFS-585201\Projects\14055\MCH00\Drawings\Output\Improvement Plans REVISED PHASE A\06-14055 WARPINGS.dwg  
 PFS-585201\Projects\14055\MCH00\Drawings\Output\Improvement Plans REVISED PHASE A\06-14055 WARPINGS.dwg

**PROJECT TITLE**  
 IMPROVEMENT PLANS  
 THE VILLAGES AT  
 MONTRACHET (REVISED)  
**PAVEMENT WARPINGS**  
 PFS No. 14055MCH00R  
 TASK 017 FIELD BOOK 1476

**PICKETT, RAY & SILVER INC**  
 CIVIL ENGINEERING, LAND SURVEYING,  
 AND NATURAL RESOURCES SERVICES  
 St. Peters  
 22 Richmond Center Court  
 St. Peters, MO 63376  
 Phone (636) 397-1211 Fax (636) 397-1104  
 www.prs.com 1-800-708-3818

**ENGINEER'S AUTHENTICATION**  
 THE RESPONSIBILITY FOR PROFESSIONAL ENGINEERING  
 LIABILITY ON THIS PROJECT IS HEREBY LIMITED TO THE  
 SET OF PLANS AUTHENTICATED BY THE SEAL, SIGNATURE,  
 AND DATE HEREON ATTACHED. RESPONSIBILITY IS  
 DISCLAIMED FOR ALL OTHER ENGINEERING PLANS  
 PROVIDED BY THIS PROJECT AND SPECIFICALLY EXCLUDES  
 REVISIONS AFTER THIS DATE UNLESS REAUTHENTICATED.  
**PICKETT, RAY & SILVER, INC. MO**  
 LICENSE #000000



KARL A. SCHOENKE, P.E.  
 PROFESSIONAL ENGINEER LICENSE 2003015039  
 ELECTRONIC SEAL

**Developer / Owner Information**  
**MONTRACHET DEVELOPMENT LLC**  
 218 Chesterfield Towne Centre  
 Chesterfield, Missouri 63005  
 Phone: 636-550-6900

P+Z No. 15-1501

City No.  
 15-742-SP

Page No.  
 PAVEMENT WARPINGS

27 of 63