

PROJECT TITLE
IMPROVEMENT PLANS
THE VILLAGES AT
MONTRACHET
SANITARY PROFILES

PICKETT, RAY & SILVER INC
CIVIL ENGINEERING, LAND SURVEYING,
AND NATURAL RESOURCES SERVICES

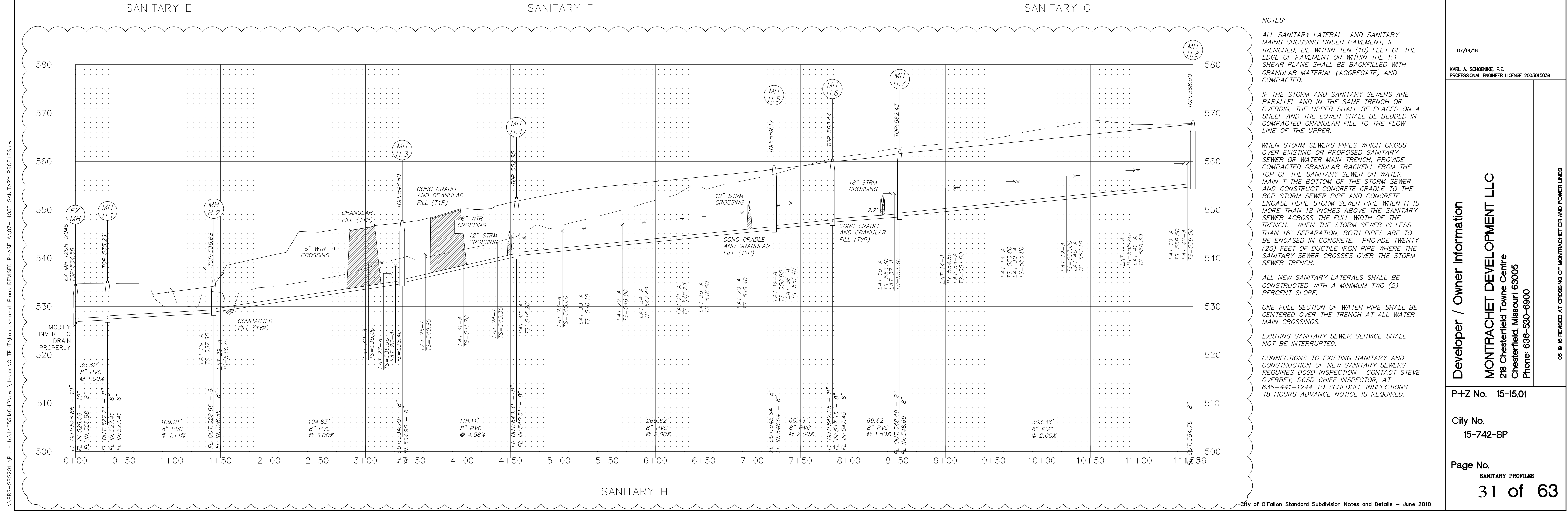
St. Peters
 22 Richmond Center Court
 St. Peters, MO 63776

Phone (636) 397-1211 Fax (636) 397-1104
 www.prs.com 1-800-708-3918

ENGINEERS AUTHENTICATION
 THE RESPONSIBILITY FOR PROFESSIONAL ENGINEERING LIABILITY ON THIS PROJECT IS HEREBY LIMITED TO THE SET OF PLANS AUTHENTICATED BY THE SEAL, SIGNATURE, AND DATE HEREON ATTACHED. RESPONSIBILITY IS DISCLAIMED FOR ALL OTHER ENGINEERING PLANS INCORPORATED IN THIS PROJECT AND SPECIFICALLY EXCLUDED HEREAFTER BY THIS DATE UNLESS REAUTHENTICATED.

PICKETT, RAY & SILVER, INC. MO
 LICENSE #000335

PWS #2 APPROVED 12/30/15



NOTES:

ALL SANITARY LATERAL AND SANITARY MAINS CROSSING UNDER PAVEMENT, IF TRENCHED, LIE WITHIN TEN (10) FEET OF THE EDGE OF PAVEMENT OR WITHIN THE 1:1 SHEAR PLANE SHALL BE BACKFILLED WITH GRANULAR MATERIAL (AGGREGATE) AND COMPACTED.

IF THE STORM AND SANITARY SEWERS ARE PARALLEL AND IN THE SAME TRENCH OR OVERDIP, THE UPPER SHALL BE PLACED ON A SHELF AND THE LOWER SHALL BE BEDDED IN COMPACTED GRANULAR FILL TO THE FLOW LINE OF THE UPPER.

WHEN STORM SEWERS PIPES WHICH CROSS OVER EXISTING OR PROPOSED SANITARY SEWER OR WATER MAIN TRENCH, PROVIDE COMPACTED GRANULAR BACKFILL FROM THE TOP OF THE SANITARY SEWER OR WATER MAIN TO THE BOTTOM OF THE STORM SEWER AND CONSTRUCT CONCRETE CRADLE TO THE TOP STORM SEWER PIPE AND CONCRETE ENCASE HOPE STORM SEWER PIPE WHEN IT IS MORE THAN 18 INCHES ABOVE THE SANITARY SEWER ACROSS THE FULL WIDTH OF THE TRENCH. WHEN THE STORM SEWER IS LESS THAN 18" SEPARATION, BOTH PIPES ARE TO BE ENCASED IN CONCRETE. PROVIDE TWENTY (20) FEET OF DUCTILE IRON PIPE WHERE THE SANITARY SEWER CROSSES OVER THE STORM SEWER TRENCH.

ALL NEW SANITARY LATERALS SHALL BE CONSTRUCTED WITH A MINIMUM TWO (2) PERCENT SLOPE.

ONE FULL SECTION OF WATER PIPE SHALL BE CENTERED OVER THE TRENCH AT ALL WATER MAIN CROSSINGS.

EXISTING SANITARY SEWER SERVICE SHALL NOT BE INTERRUPTED.

CONNECTIONS TO EXISTING SANITARY AND CONSTRUCTION OF NEW SANITARY SEWERS REQUIRES DCSD INSPECTION. CONTACT STEVE OVERBEY, DCSD CHIEF INSPECTOR, AT 636-441-1244 TO SCHEDULE INSPECTIONS. 48 HOURS ADVANCE NOTICE IS REQUIRED.

07/19/16

KARL A. SCHONING, P.E.
 PROFESSIONAL ENGINEER LICENSE 2003015039

Developer / Owner Information

MONTRACHET DEVELOPMENT LLC
 218 Chesterfield Towne Centre
 Chesterfield, Missouri 63005
 Phone: 636-530-6900

P+Z No. 15-15.01

City No. 15-742-SP

Page No. 31 of 63
 SANITARY PROFILES

CITY OF FALLON REVISED STORM 10 07/19/16

DCSD APPROVED 11/30/15 PERMIT NUMBER 2015-2-005

\\PFS-985201\Projects\14055\MCH0\Draw\Design\OUTPUT\Improvement Plans REVISED PHASE A\07-14055 SANITARY PROFILES.dwg