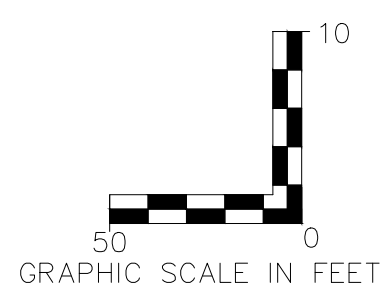


"PUBLIC" STORM 1
 "PUBLIC" STORM 4



PROFILE SCALE:
 HORIZ: 1" = 50'
 VERT: 1" = 10'

- TOP ELEVATION:
- AI - TOP OF INLET STONE
 - DAI - TOP OF INLET STONE
 - BH - TOP OF THE INLET FRAME (R-2560-D5)
 - CI - TOP OF INLET STONE
 - MH - TOP OF FRAME AND COVER

- LEGEND:
- AI - AREA INLET
 - DAI - DOUBLE AREA INLET
 - BH - BEE HIVE GRATE INLET
 - CI - CURB INLET
 - FL - FLARED END SECTION
 - MH - MANHOLE

NOTES:

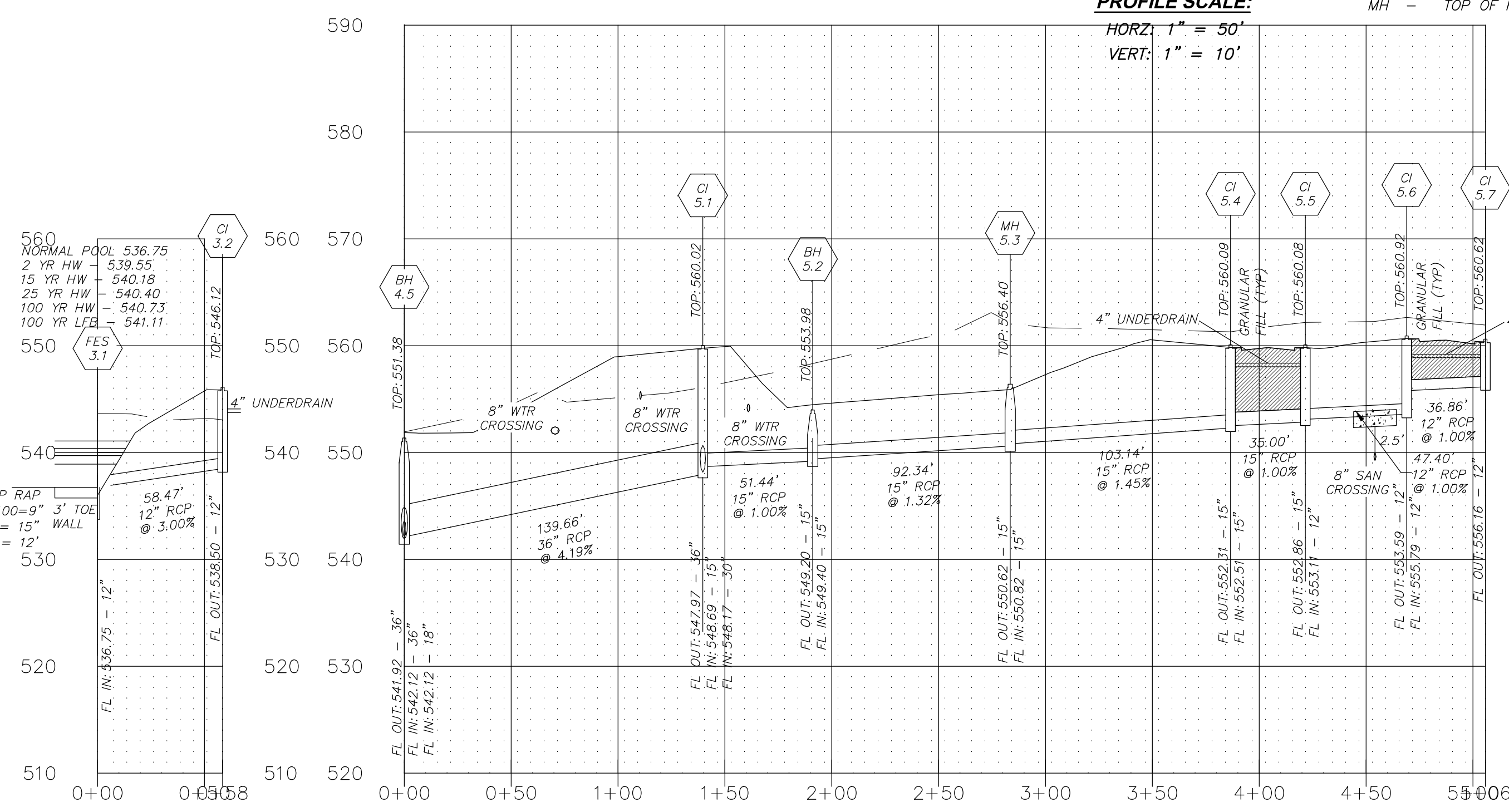
ALL SANITARY LATERAL AND SANITARY MAINS CROSSING UNDER PAVEMENT, IF TRENCHED, SHALL BE BACKFILLED WITH GRANULAR MATERIAL (AGGREGATE) AND COMPACTED.

IF THE STORM AND SANITARY SEWERS ARE PARALLEL AND IN THE SAME TRENCH OR OVERDIG, THE UPPER SHALL BE PLACED ON A SHELF AND THE LOWER SHALL BE BEDDED IN COMPACTED GRANULAR FILL TO THE FLOW LINE OF THE UPPER.

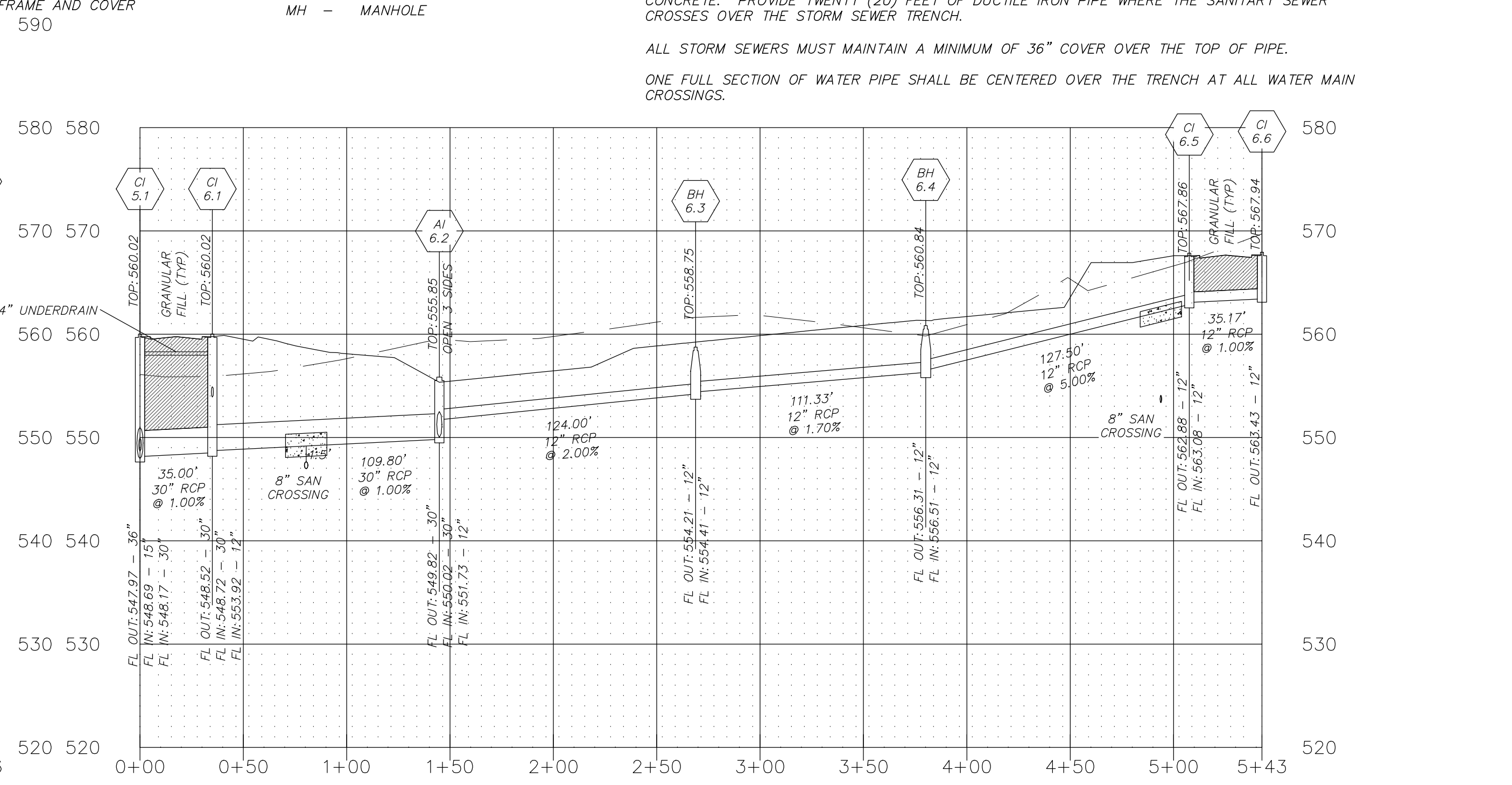
WHEN STORM SEWERS WHICH CROSS OVER EXISTING OR PROPOSED SANITARY SEWER OR WATER MAIN TRENCH, PROVIDE COMPACTED GRANULAR BACKFILL FROM THE TOP OF THE SANITARY SEWER OR WATER MAIN TRENCH TO THE BOTTOM OF THE STORM SEWER AND CONSTRUCT CONCRETE CRADLE TO THE RCP STORM SEWER PIPE AND CONCRETE ENCASE HDPE STORM SEWER PIPE WHEN IT IS MORE THAN 18 INCHES ABOVE THE SANITARY SEWER ACROSS THE FULL WIDTH OF THE TRENCH. WHEN THE STORM SEWER IS LESS THAN 18" SEPARATION, BOTH PIPES ARE TO BE ENCASED IN CONCRETE. PROVIDE TWENTY (20) FEET OF DUCTILE IRON PIPE WHERE THE SANITARY SEWER CROSSES OVER THE STORM SEWER TRENCH.

ALL STORM SEWERS MUST MAINTAIN A MINIMUM OF 36" COVER OVER THE TOP OF PIPE.

ONE FULL SECTION OF WATER PIPE SHALL BE CENTERED OVER THE TRENCH AT ALL WATER MAIN CROSSINGS.



"PUBLIC" STORM 3
 "PUBLIC" STORM 5



"PUBLIC" STORM 6

PROJECT TITLE
**IMPROVEMENT PLANS
 THE VILLAGES AT
 MONTRACHET (REVISED)**

PICKETT, RAY & SILVER INC
 CIVIL ENGINEERING, LAND SURVEYING,
 AND NATURAL RESOURCES SERVICES

St. Peters
 22 Richmond Center Court
 St. Peters, MO 63776

Phone (636) 397-1211 Fax (636) 397-1104
 www.prs.com 1-800-708-3918

ENGINEER'S AUTHENTICATION
 THE RESPONSIBILITY FOR PROFESSIONAL ENGINEERING LIABILITY ON THIS PROJECT IS HEREBY LIMITED TO THE SET OF PLANS AUTHENTICATED BY THE SEAL, SIGNATURE, AND DATE HEREON ATTACHED. RESPONSIBILITY IS DISCLAIMED FOR ALL OTHER ENGINEERING PLANS PROVIDED BY THIS PROJECT AND SPECIFICALLY EXCLUDES REVISIONS AFTER THIS DATE UNLESS REAUTHENTICATED.

PICKETT, RAY & SILVER, INC. MO
 LICENSE # 000000

KARL ANTHONY SCHOENIKE
 STATE OF MISSOURI
 PROFESSIONAL ENGINEER
 NUMBER PE-2003015039
 09/28/16

KARL A. SCHOENIKE, P.E.
 ELECTRONIC SEAL
 PROFESSIONAL ENGINEER LICENSE 2003015039

Developer / Owner Information

MONTRACHET DEVELOPMENT LLC
 218 Chesterfield Towne Centre
 Chesterfield, Missouri 63005
 Phone: 636-530-6900

P+Z No. 15-15.01

City No. 15-742-SP

Page No. 34 of 63

STORM PROFILES

CITY OF O'FALLON REVISED PHASE A 09/28/2016