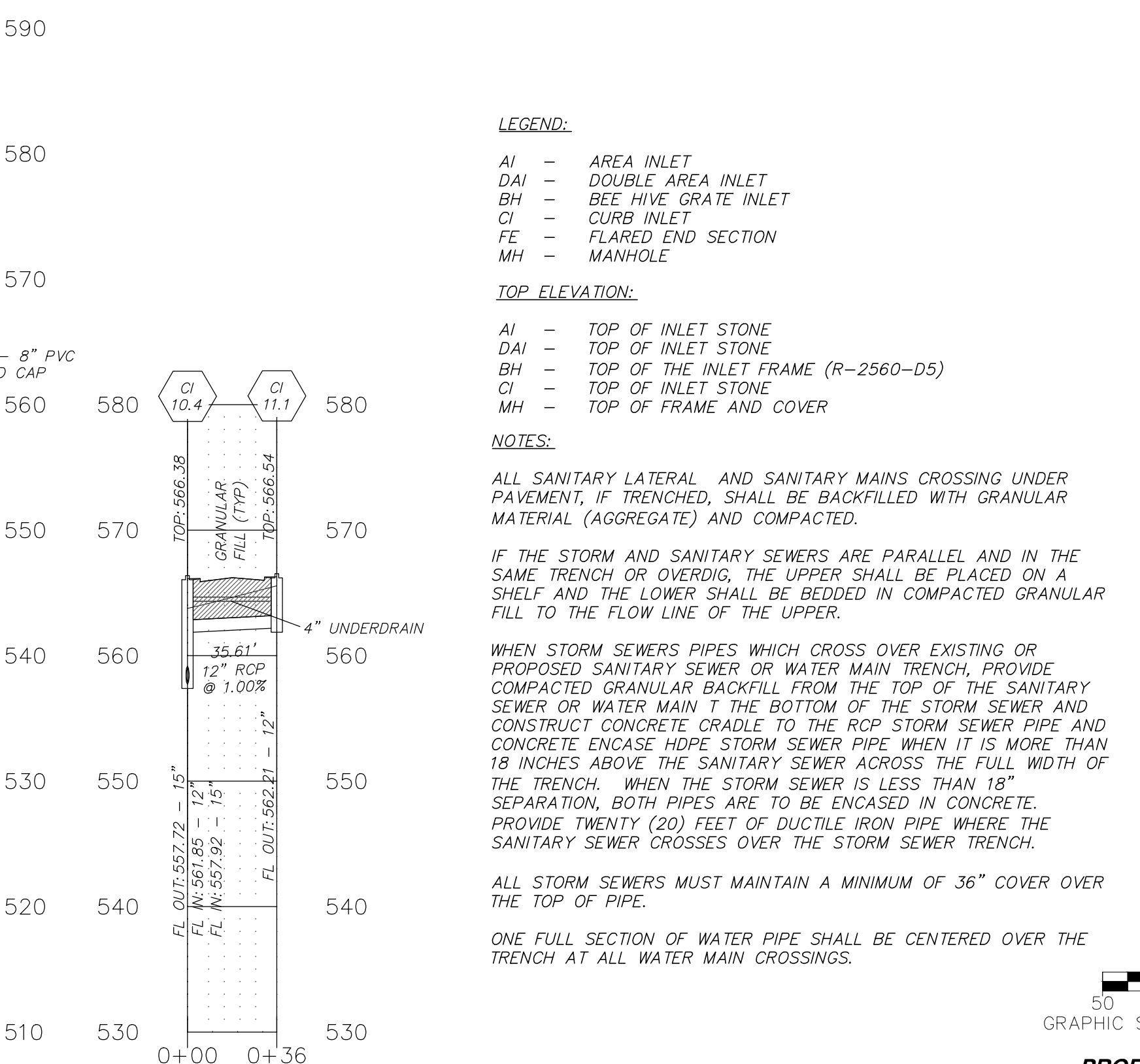
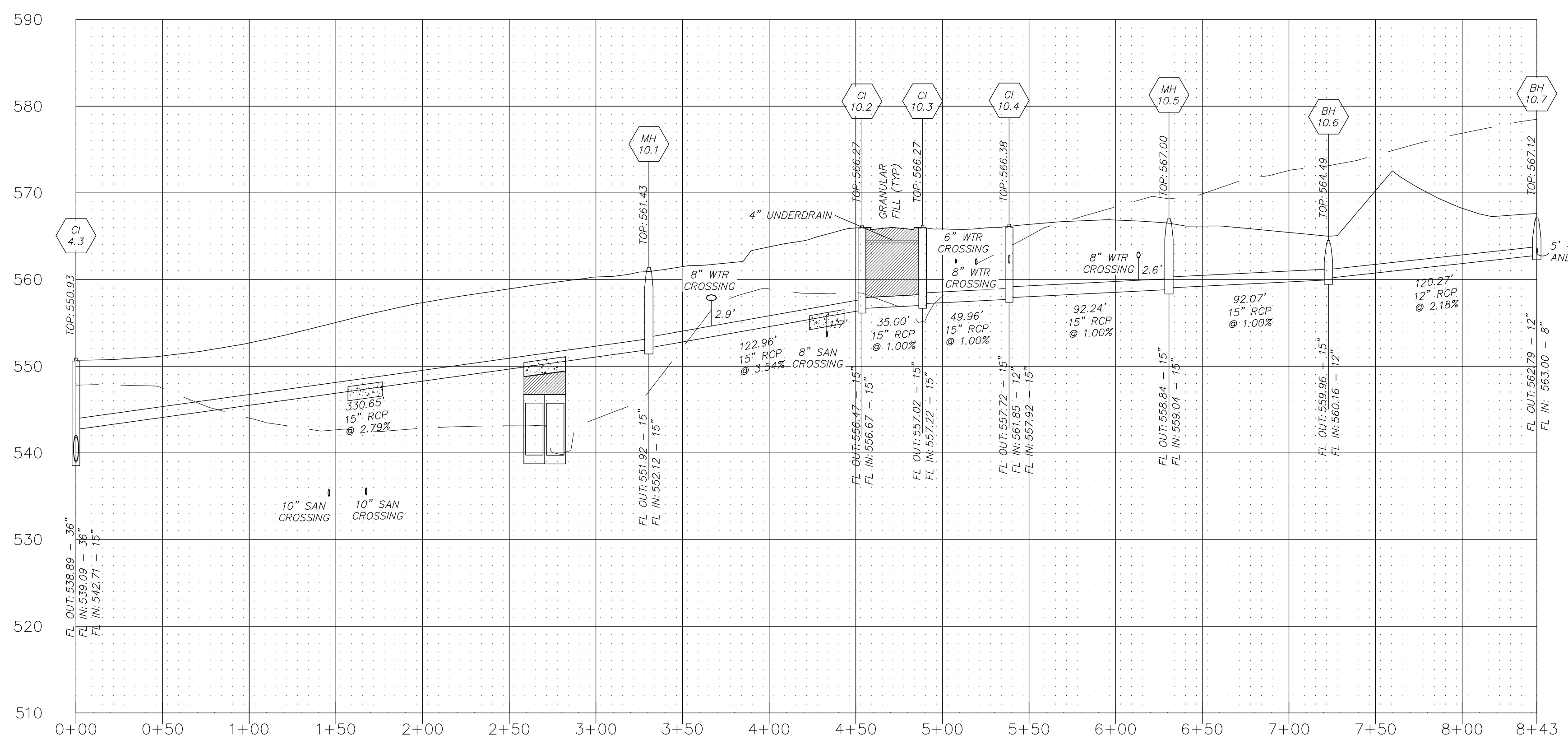


"PUBLIC"
STORM 7

"PUBLIC"
STORM 8

"PUBLIC"
STORM 9



"PUBLIC"
STORM 10

"PUBLIC"
STORM 11

LEGEND:

- AI - AREA INLET
- DAI - DOUBLE AREA INLET
- BH - BEE HIVE GRATE INLET
- CI - CURB INLET
- FE - FLARED END SECTION
- MH - MANHOLE

TOP ELEVATION:

- AI - TOP OF INLET STONE
- DAI - TOP OF INLET STONE
- BH - TOP OF THE INLET FRAME (R-2560-D5)
- CI - TOP OF INLET STONE
- MH - TOP OF FRAME AND COVER

NOTES:

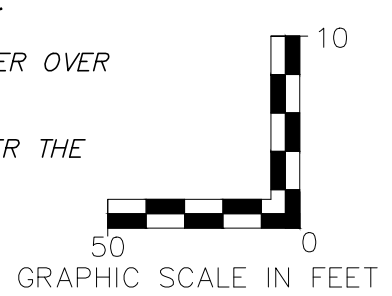
ALL SANITARY LATERAL AND SANITARY MAINS CROSSING UNDER PAVEMENT, IF TRENCHED, SHALL BE BACKFILLED WITH GRANULAR MATERIAL (AGGREGATE) AND COMPACTED.

IF THE STORM AND SANITARY SEWERS ARE PARALLEL AND IN THE SAME TRENCH OR OVERDIE, THE UPPER SHALL BE PLACED ON A SHELF AND THE LOWER SHALL BE BEDDED IN COMPACTED GRANULAR FILL TO THE FLOW LINE OF THE UPPER.

WHEN STORM SEWERS PIPES WHICH CROSS OVER EXISTING OR PROPOSED SANITARY SEWER OR WATER MAIN TRENCH, PROVIDE COMPACTED GRANULAR BACKFILL FROM THE TOP OF THE SANITARY SEWER OR WATER MAIN TO THE BOTTOM OF THE STORM SEWER AND CONSTRUCT CONCRETE CRADLE TO THE RCP STORM SEWER PIPE AND CONCRETE ENCASE HDPE STORM SEWER PIPE WHEN IT IS MORE THAN 18 INCHES ABOVE THE SANITARY SEWER ACROSS THE FULL WIDTH OF THE TRENCH. WHEN THE STORM SEWER IS LESS THAN 18" SEPARATION, BOTH PIPES ARE TO BE ENCASED IN CONCRETE. PROVIDE TWENTY (20) FEET OF DUCTILE IRON PIPE WHERE THE SANITARY SEWER CROSSES OVER THE STORM SEWER TRENCH.

ALL STORM SEWERS MUST MAINTAIN A MINIMUM OF 36" COVER OVER THE TOP OF PIPE.

ONE FULL SECTION OF WATER PIPE SHALL BE CENTERED OVER THE TRENCH AT ALL WATER MAIN CROSSINGS.



PROFILE SCALE:
HORZ: 1" = 50'
VERT: 1" = 10'

PROJECT TITLE
IMPROVEMENT PLANS
THE VILLAGES AT
MONTRACHET (REVISED)

STORM PROFILES
PFS No. 14055MCH00R
TASK 017 FIELD BOOK 1476

PICKETT, RAY & SILVER INC
CIVIL ENGINEERING, LAND SURVEYING,
AND NATURAL RESOURCES SERVICES

St. Peters
22 Richmond Center Court
St. Peters, MO 63376
Phone (636) 397-1211 Fax (636) 397-1104
www.prs.com 1-800-708-3818

ENGINEER'S AUTHENTICATION
THE RESPONSIBILITY FOR PROFESSIONAL ENGINEERING LIABILITY ON THIS PROJECT IS SEVERELY LIMITED TO THE SET OF PLANS AUTHENTICATED BY THE SEAL, SIGNATURE, AND DATE HEREON ATTACHED. RESPONSIBILITY IS DISCLAIMED FOR ALL OTHER ENGINEERING PLANS PROVIDED IN THIS PROJECT AND SPECIFICALLY EXCLUDES REVISIONS AFTER THIS DATE UNLESS REAUTHENTICATED.

PICKETT, RAY & SILVER, INC. MO LICENSE #00000000

Karl Anthony Schoenke
STATE OF MISSOURI
KARL ANTHONY SCHOENKE
NUMBER
PE-2003015039
PROFESSIONAL ENGINEER
09/28/16

ELECTRONIC SEAL
KARL A. SCHOENKE, P.E.
PROFESSIONAL ENGINEER LICENSE 2003015039

Developer / Owner Information
MONTRACHET DEVELOPMENT LLC
218 Chesterfield Towne Centre
Chesterfield, Missouri 63005
Phone: 636-530-6900

P+Z No. 15-15.01
City No. 15-742-SP
Page No. 35 of 63
STORM PROFILES