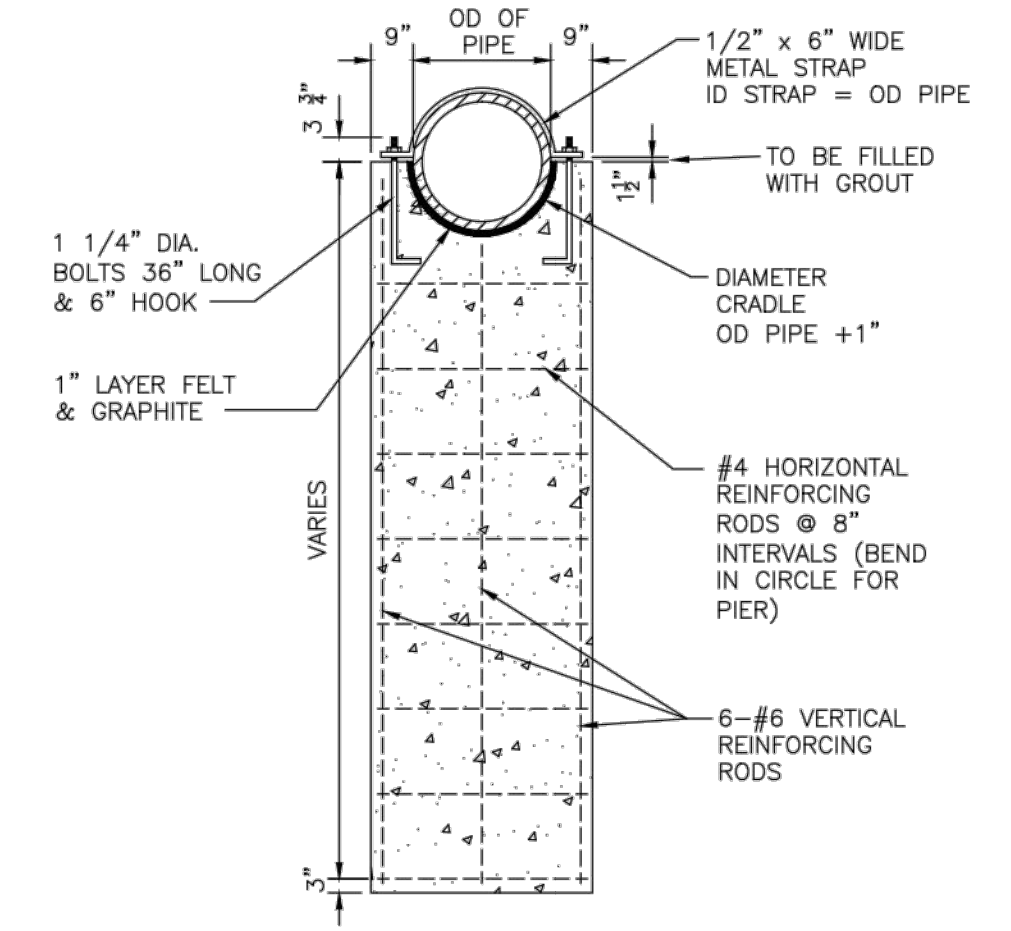


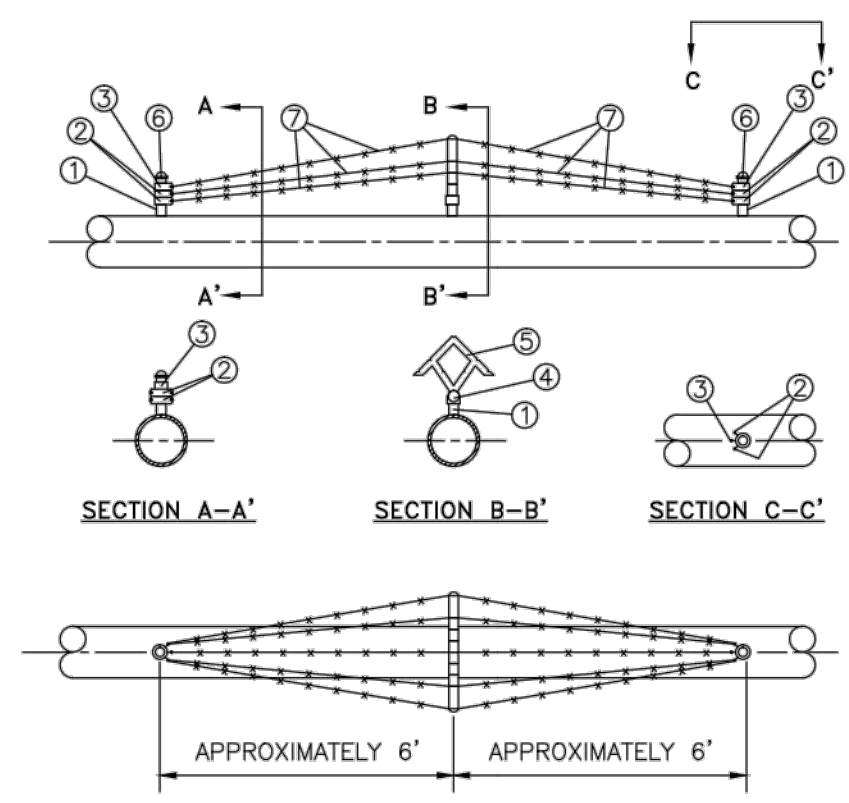
Duckett Creek Sanitary District

AERIAL CREEK CROSSING DETAIL	Dwn By: BSM Ckd By: MDOB	App By: KLA Date: DEC. 2015	Detail No. 30A
------------------------------	-----------------------------	--------------------------------	----------------



Duckett Creek Sanitary District

CONCRETE PIER DETAIL	Dwn By: BSM Ckd By: MDOB	App By: KA Date: DEC. 2015	Detail No. 30B
----------------------	-----------------------------	-------------------------------	----------------



BILL OF MATERIAL

NO.	QTY	STK. NO.	SIZE	DESCRIPTION
1	6*	38290	1 1/2" x 5"	NIPPLE, STL. SCRD.
2	8		1 1/2" OD, #7 90°	BRACE BAND, GALV.
3	4		1 1/2" OD, #6	BRACE BAND, GALV.
4	2		1 1/2" OD x 59U	UNIVERSAL BASE, GALV.
5	2		NORTHLAND 5 STRD.	ARM, STL., GALV. W/BOLT
6	4		NORTHLAND #1 1/2" GAP, ACCORN. GALV. W/SET SCREW	
7	1**	59850	4 POINT, 12 1/2" GAUGE	WIRE, BARBED, GALV.

NOTES:

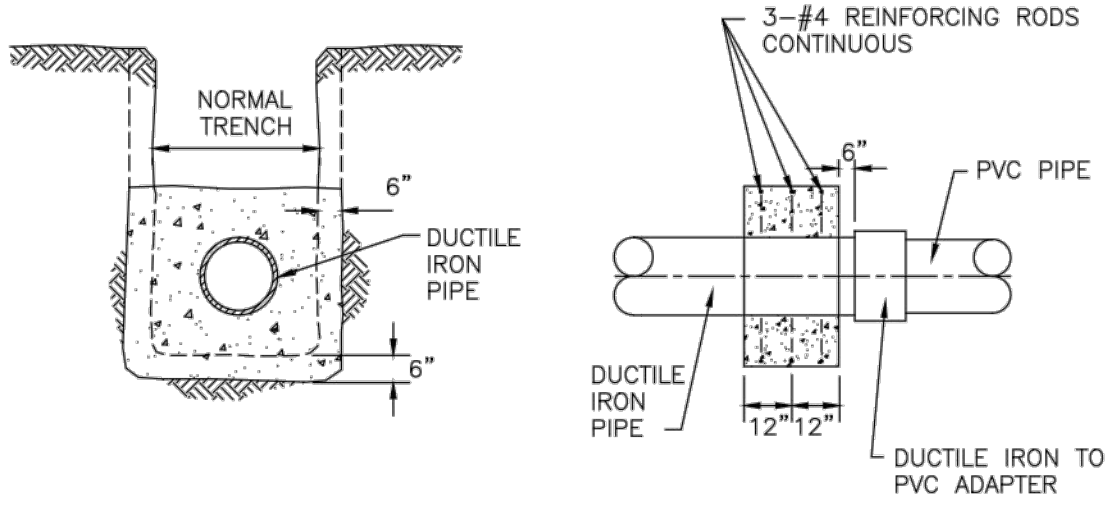
- "BILL OF MATERIALS" PROVIDES SUFFICIENT MATERIAL FOR TWO BARRICADES.
- LOCATION OF BARRICADES ON PIPING SYSTEM TO BE AS SPECIFIED ON APPROVED CONSTRUCTION DRAWINGS.
- TWO BARRICADES WILL BE REQUIRED, ONE AT EACH END OF THE CROSSING AS A DETERRENT AGAINST FOOT TRAFFIC. IN SOME INSTANCES ADDITIONAL BARRICADES MAY BE REQUIRED.
- COAT ANY EXPOSED PIPE WITH MASTIC, STOCK #51857.

* 1 1/2" BARE PIPE ON JOB MAY BE SUBSTITUTED FOR 1 1/2" x 5" NIPPLE. SCREW THREADS NOT NECESSARY.
 ** CONTACT SUPERVISOR BEFORE ORDERING BARBED WIRE. BARBED WIRE SUPPLIED IN 1320' ROLLS ONLY, NOT RETURNABLE.

Duckett Creek Sanitary District

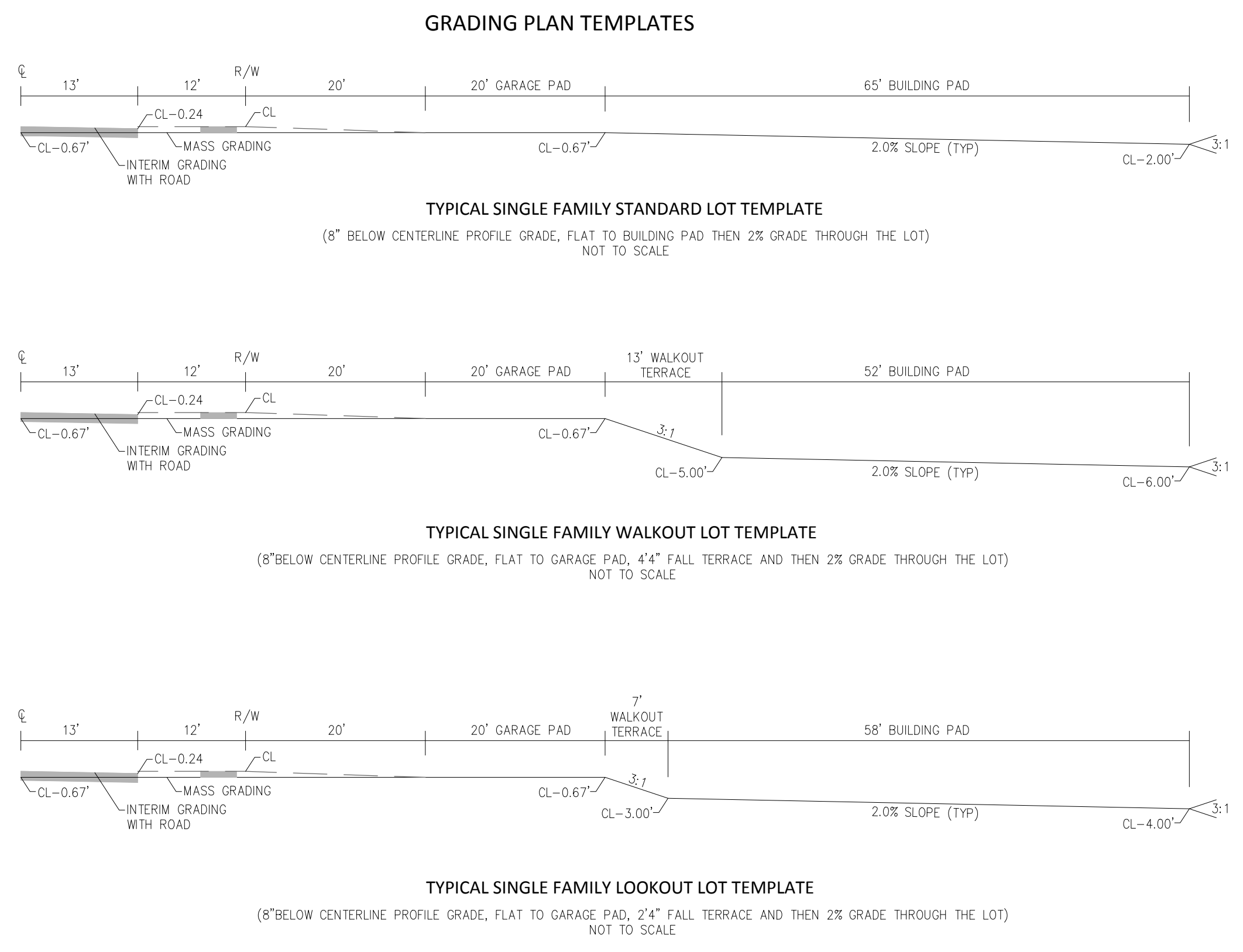
ARIEL CROSSING BARRIER DETAIL	Dwn By: BSM Ckd By: MDOB	App By: KA Date: DEC. 2015	Detail No. 30C
-------------------------------	-----------------------------	-------------------------------	----------------

CROSSING NO.	TOTAL LENGTH OF PIPE L	LENGTH BETWEEN C OF PIPE SUPPORTS I	CARRIER PIPE OUTSIDE DIAMETER D	CARRIER PIPE WALL THICKNESS (IN.)
1				
2				



Duckett Creek Sanitary District

AERIAL CROSSING CONCRETE COLLAR DETAIL	Dwn By: BSM Ckd By: MDOB	App By: KA Date: DEC. 2015	Detail No. 30D
----------------------------------------	-----------------------------	-------------------------------	----------------



PROJECT TITLE
 IMPROVEMENT PLANS
 THE VILLAGES AT
 MONTRACHET (REVISED)

DETAILS
 PFS No. 14055MCH000P
 TASK 017 FIELD BOOK 1476

PICKETT, RAY & SILVER INC
 CIVIL ENGINEERING, LAND SURVEYING,
 AND NATURAL RESOURCES SERVICES

St. Peters
 22 Richmond Center Court
 St. Peters, MO 63376
 Phone (636) 397-1211 Fax (636) 397-1104
 www.prs.com 1-800-708-3818

ENGINEER'S AUTHENTICATION
 THE RESPONSIBILITY FOR PROFESSIONAL ENGINEERING LIABILITY ON THIS PROJECT IS SEVERELY LIMITED TO THE SET OF PLANS AUTHENTICATED BY THE SEAL, SIGNATURE, AND DATE HEREON ATTACHED. RESPONSIBILITY IS DISINGULFED FOR ALL OTHER ENGINEERING PLANS PROVIDED IN THIS PROJECT AND SPECIFICALLY EXCLUDES REVISIONS AFTER THIS DATE UNLESS REAUTHENTICATED.

PICKETT, RAY & SILVER, INC. MO
 LICENSE #000336

KARL ANTHONY SCHOENIKE
 STATE OF MISSOURI
 PROFESSIONAL ENGINEER
 NUMBER PE-2003015039
 09/28/16

ELECTRONIC SEAL
 KARL A. SCHOENIKE, P.E.
 PROFESSIONAL ENGINEER LICENSE 2003015039

Developer / Owner Information

MONTRACHET DEVELOPMENT LLC
 218 Chesterfield Towne Centre
 Chesterfield, Missouri 63005
 Phone: 636-530-6900

P+Z No. 15-15.01

City No. 15-742-SP

Page No.

CITY OF FALLON REVISED PHASE A 09/28/2016

\\PFS-5852011\Projects\14055MCH000\Design\OUTPUT\Improvement Plans REVISED PHASE A\12-14055 DETAILS.dwg