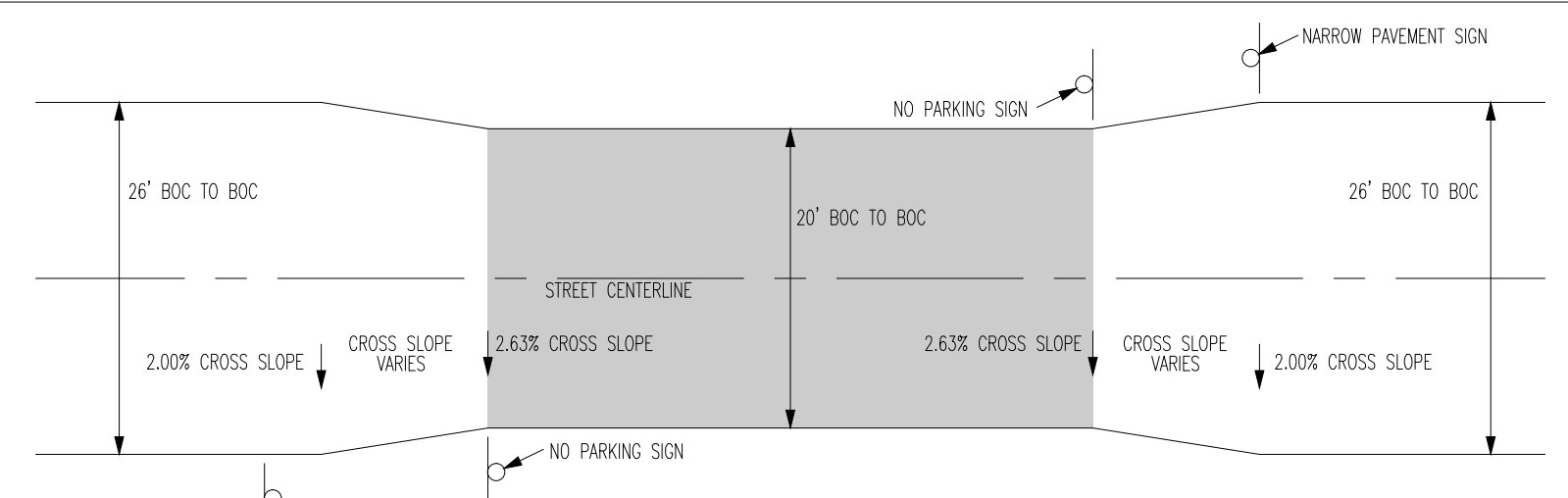


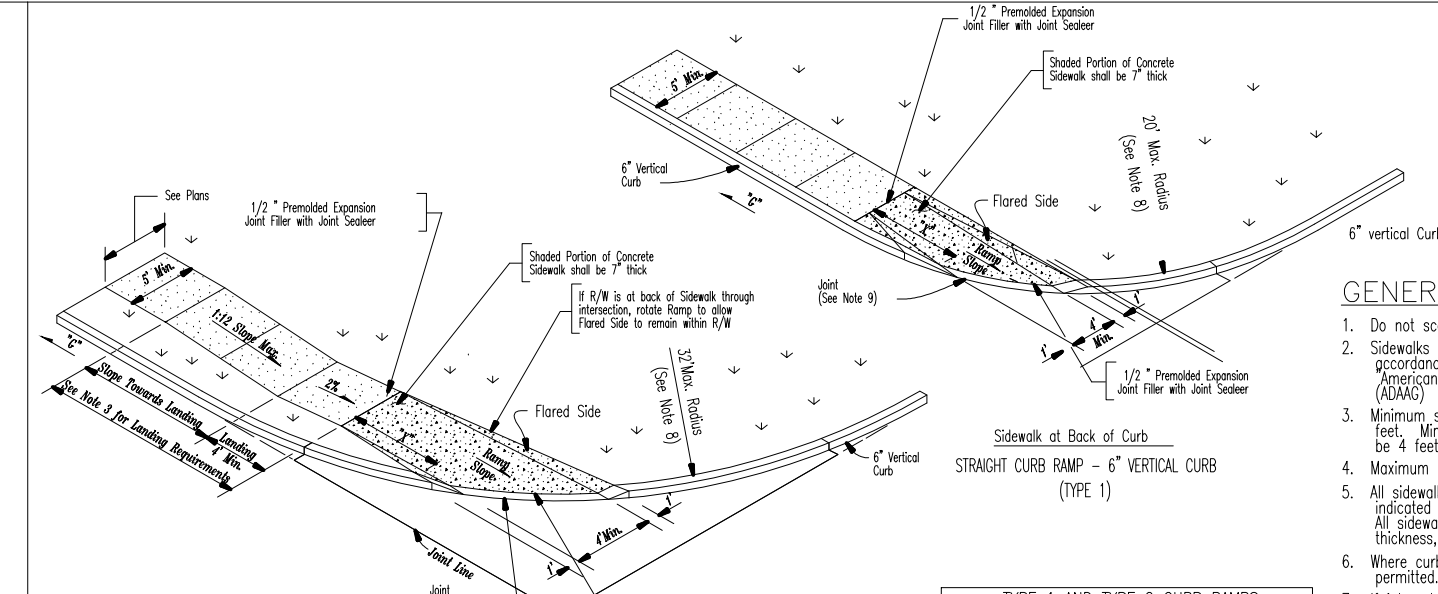
**NOTES:**

- THE ASPHALT SURFACE SHALL BE COMPACTED TO 98% MAXIMUM DENSITY.
- AGGREGATE BASE SHALL BE PLACED ON PREPARED SUBGRADE.



**NOTES:**

- 3" ROLLED CURB SHALL CONTINUE THROUGH THE CHOKER.
- CONTRACTOR SHALL ENSURE POSITIVE DRAINAGE THROUGH THE CHOKER.
- SIGN LOCATIONS MAY VARY TO AVOID CONFLICTS WITH DRIVEWAYS AND UTILITIES.



**GENERAL NOTES:**

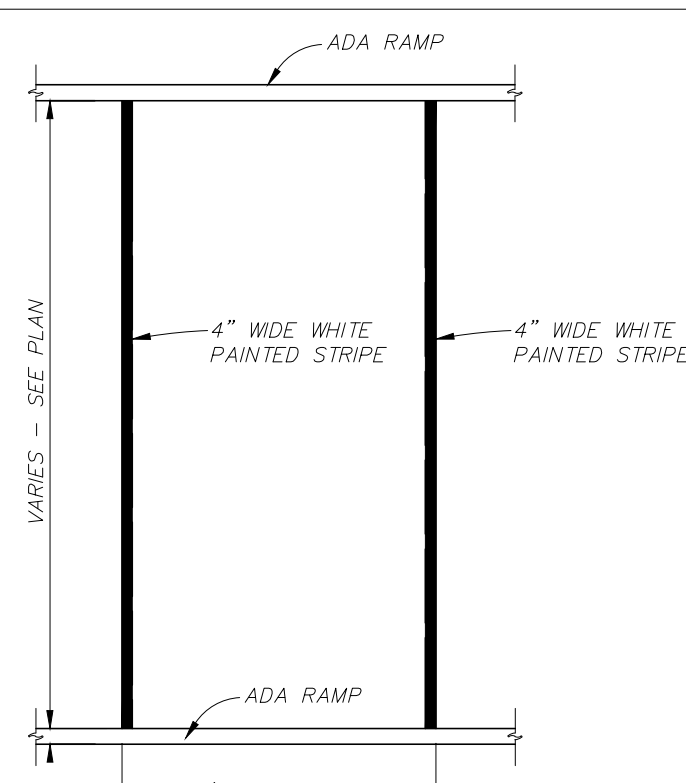
- Do not scale drawing. Follow dimensions.
- Sidewalk and sidewalk curb ramps shall be constructed in accordance with these details and the current approved Americans with Disabilities Act Accessibility Guidelines (ADAAG).
- Maximum sidewalk width along 6" vertical curb shall be 5 feet. Minimum sidewalk width along 3" rolled curb shall be 4 feet.
- Maximum sidewalk cross slope 0.02%/ft.
- All sidewalk segments shall be 4" thick, except where indicated by a note. Sidewalk portions shown on details. All sidewalk segments shall be cast in place concrete. Sidewalk thickness shall be paid for in concrete sidewalks.
- Where curb ramp meets pavement, bullnose will not be permitted.
- If integral concrete curb is constructed, strike a dummy joint across bottom of ramp at curb line. If concrete curb is cast-in-place, block out pavement to provide full depth curb across ramp from outer point of curb taper to outer point of curb taper.
- For sidewalk locations on Cul-De-Sacs, refer to "Pavement Construction Details".
- For roadway cross slopes, pavement types, and thicknesses, refer to "Standard Typical Sections".
- The intersection of two sidewalks or the intersection of a sidewalk and a driveway may serve as a wheelchair passing space on sidewalks less than 5 feet wide.
- All curb ramps shall have a detectable warning complying with Americans with Disabilities Act Accessibility Guidelines (ADAAG).

**TYPE 1 AND TYPE 2 CURB RAMPS**

GRADE ALONG CURB	MIN. LENGTH OF RAMP (L/F)
NEGATIVE (-) VALUES	3
0 TO +1	4
+1.01 TO +2	5
+2.01 TO +3	6
+3.01 TO +4	8
+4.01 TO +5	10
+5.01 TO +6	12
GREATER THAN +6	15

**TYPE 3 CURB RAMP**

GRADE ALONG CURB	MIN. LENGTH OF RAMP (L/F)
NEGATIVE (-) VALUES	3
0 TO +2	4
+2.01 TO +3	5
+3.01 TO +4	6
+4.01 TO +5	8
+5.01 TO +6	11
GREATER THAN +6	13

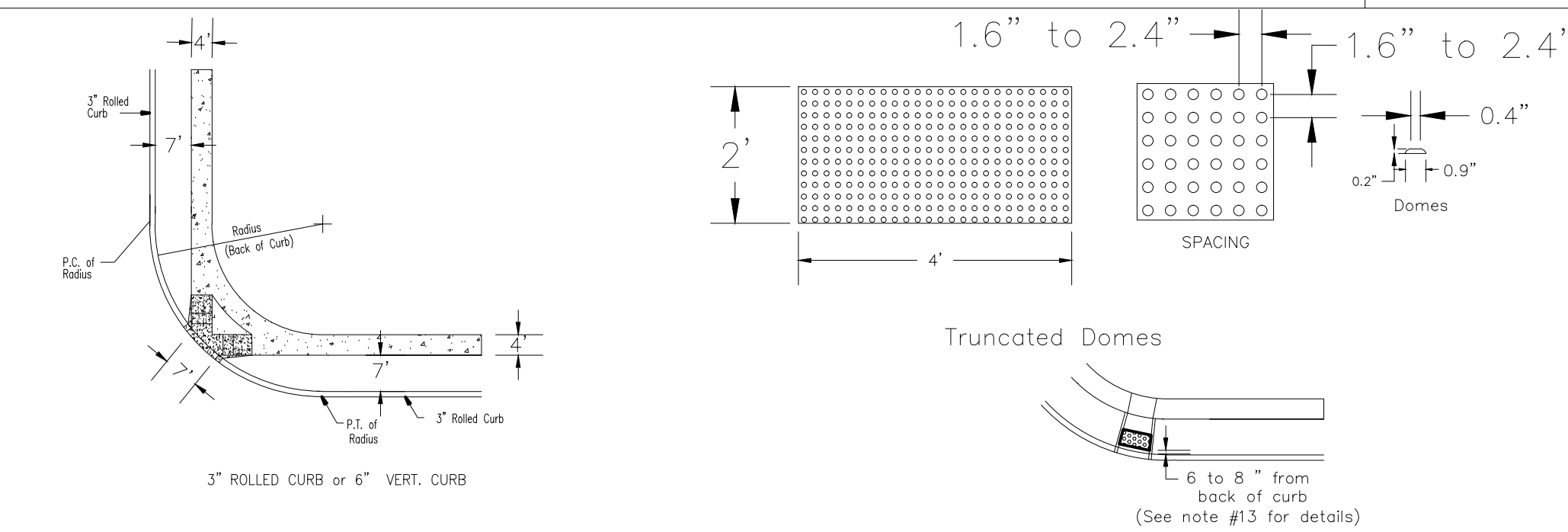


**CROSS WALK STRIPING DETAIL**  
N.T.S.

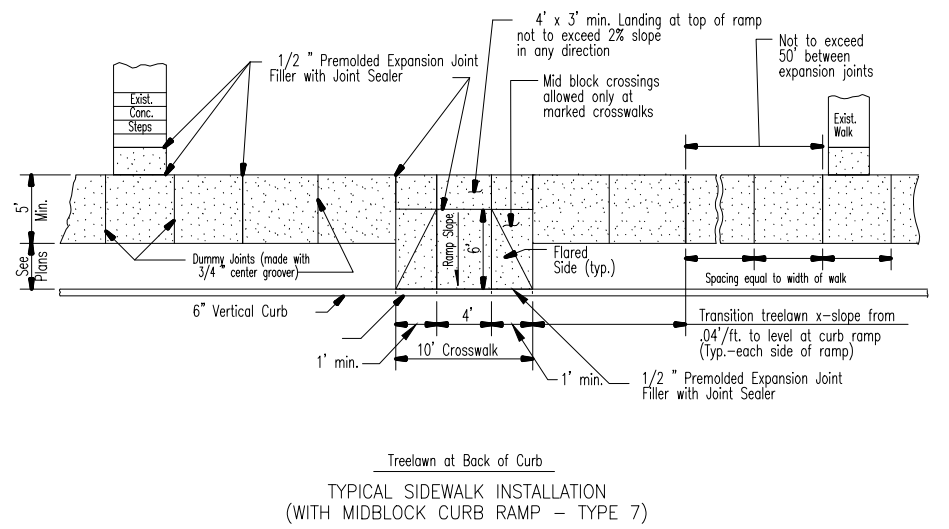
**PAVEMENT CONSTRUCTION DETAILS**  
PAVEMENT WIDTH NARROWING

**CITY OF O'FALLON**  
ENGINEERING DEPARTMENT  
O'FALLON, MISSOURI

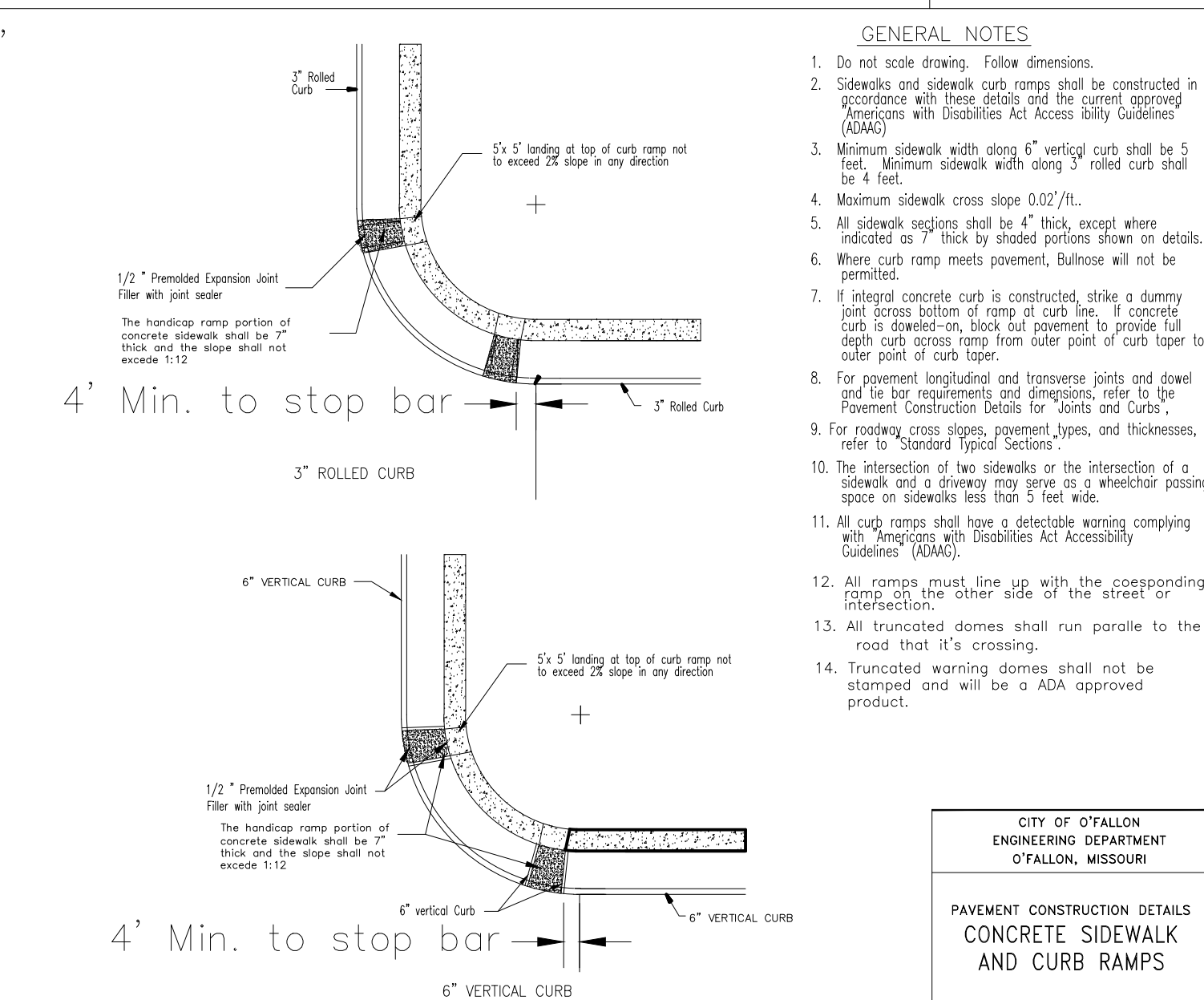
**CONCRETE SIDEWALK WITHIN CUL-DE-SACS**



**Truncated Domes**



**TYPICAL SIDEWALK INSTALLATION WITH MIDBLOCK CURB RAMP - TYPE 7**



**GENERAL NOTES:**

- Do not scale drawing. Follow dimensions.
- Sidewalk and sidewalk curb ramps shall be constructed in accordance with these details and the current approved Americans with Disabilities Act Accessibility Guidelines (ADAAG).
- Minimum sidewalk width along 6" vertical curb shall be 5 feet. Minimum sidewalk width along 3" rolled curb shall be 4 feet.
- Maximum sidewalk cross slope 0.02%/ft.
- All sidewalk segments shall be 4" thick, except where indicated as 7" thick by shaded portions shown on details.
- Where curb ramp meets pavement, bullnose will not be permitted.
- If integral concrete curb is constructed, strike a dummy joint across bottom of ramp at curb line. If concrete curb is cast-in-place, block out pavement to provide full depth curb across ramp from outer point of curb taper to outer point of curb taper.
- For pavement longitudinal and transverse joints and dowel and tie bar requirements and dimensions, refer to the "Pavement Construction Details for Joints and Curbs".
- For roadway cross slopes, pavement types, and thicknesses, refer to "Standard Typical Sections".
- The intersection of two sidewalks or the intersection of a sidewalk and a driveway may serve as a wheelchair passing space on sidewalks less than 5 feet wide.
- All curb ramps shall have a detectable warning complying with Americans with Disabilities Act Accessibility Guidelines (ADAAG).
- All ramps must line up with the corresponding ramp on the other side of the street or crossing.
- All truncated domes shall run parallel to the road that it's crossing.
- Truncated warning domes shall not be stamped and will be a ADA approved product.
- All ramps must line up with the corresponding ramp on the other side of the street or crossing.
- All truncated domes shall run parallel to the road that it's crossing.
- Truncated warning domes shall not be stamped and will be a ADA approved product.

**CITY OF O'FALLON**  
ENGINEERING DEPARTMENT  
O'FALLON, MISSOURI

**PAVEMENT CONSTRUCTION DETAILS**  
CONCRETE SIDEWALK AND CURB RAMPS

**GENERAL NOTES:**

- Do not scale drawing. Follow dimensions.
- Sidewalk cross slope 0.02%/ft.
- Sidewalk thickness increases to 6" on each side of private Driveways and 7" on each side of Commercial Driveways for one section of the sidewalk. See "Entrance Construction Details".
- For sidewalk locations on Cul-De-Sacs see "Pavement Construction Details".
- For longitudinal and transverse joints, dowel, and tie bar requirements and dimensions refer to the "Integral Curb, Pavement Typical Sections and Details".
- For roadway cross slopes, pavement types, and thickness, refer to "Standard Typical Section".

**CONCRETE SIDEWALK THROUGH COMMERCIAL ENTRANCES**

**PROJECT TITLE**  
IMPROVEMENT PLANS  
THE VILLAGES AT  
MONTRACHET (REVISED)

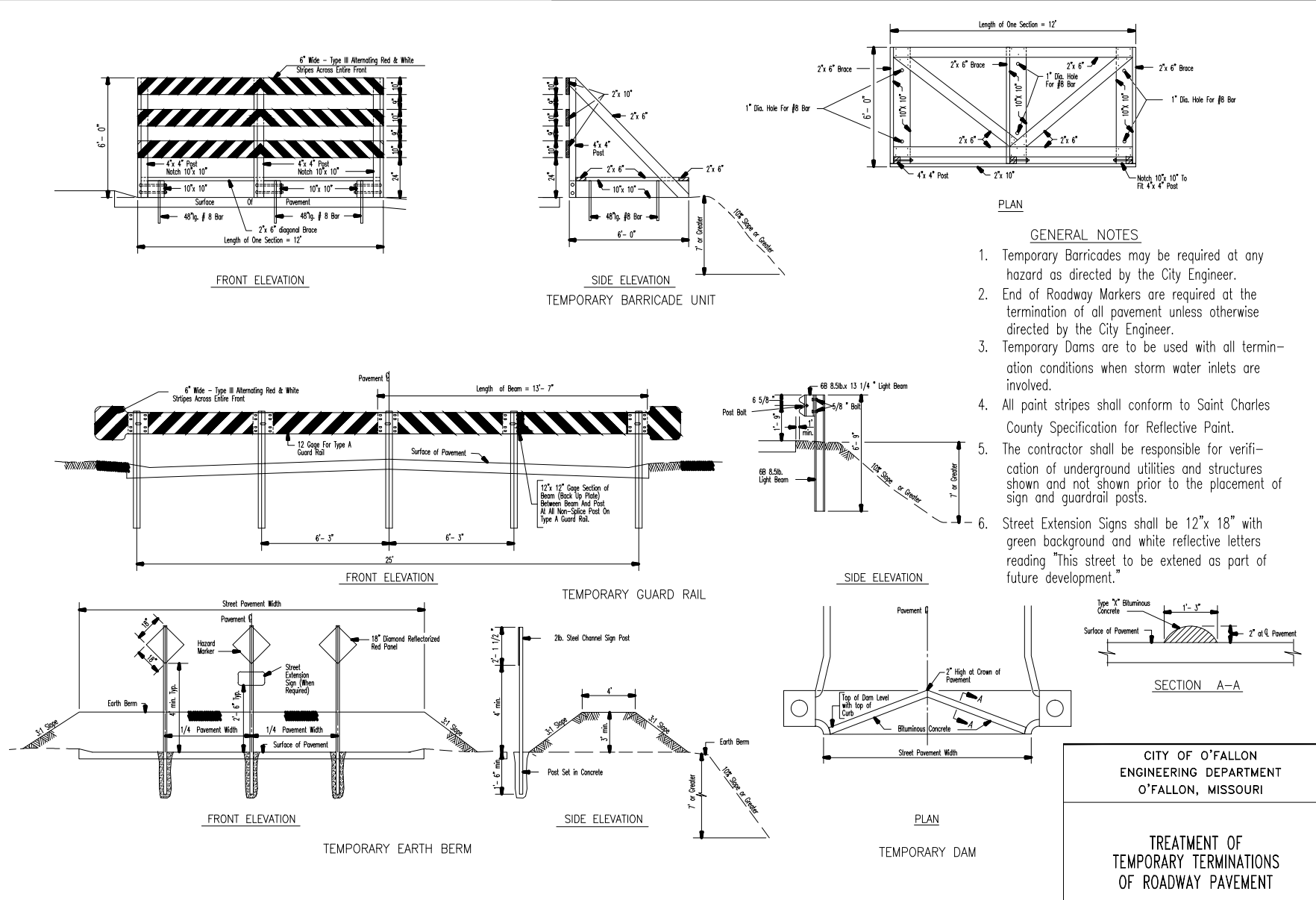
**PICKETT, RAY & SILVER INC**  
CIVIL ENGINEERING, LAND SURVEYING,  
AND NATURAL RESOURCES SERVICES  
St. Peters  
22 Richmond Center Court  
St. Peters, MO 63376  
Phone (636) 397-1211 Fax (636) 397-1104  
www.prs.com 1-800-708-3918

**ENGINEER'S AUTHENTICATION**  
THE RESPONSIBILITY FOR PROFESSIONAL ENGINEERING LIABILITY ON THIS PROJECT IS SOLELY LIMITED TO THE SET OF PLANS AUTHORIZED BY THE SEAL, SIGNATURE, AND DATE HEREON ATTACHED. RESPONSIBILITY IS DISCLAIMED FOR ALL OTHER ENGINEERING PLANS INVOLVED IN THIS PROJECT AND SPECIFICALLY EXCLUDES REVISIONS AFTER THIS DATE UNLESS REAUTHENTICATED.  
PICKETT, RAY & SILVER, INC. MO. LICENSE #000036  
KARL ANTHONY SCHOENKE  
STATE OF MISSOURI  
NUMBER PE-2003015039  
PROFESSIONAL ENGINEER  
09/28/16  
ELECTRONIC SEAL  
KARL A. SCHOENKE, P.E.  
PROFESSIONAL ENGINEER LICENSE 2003015039

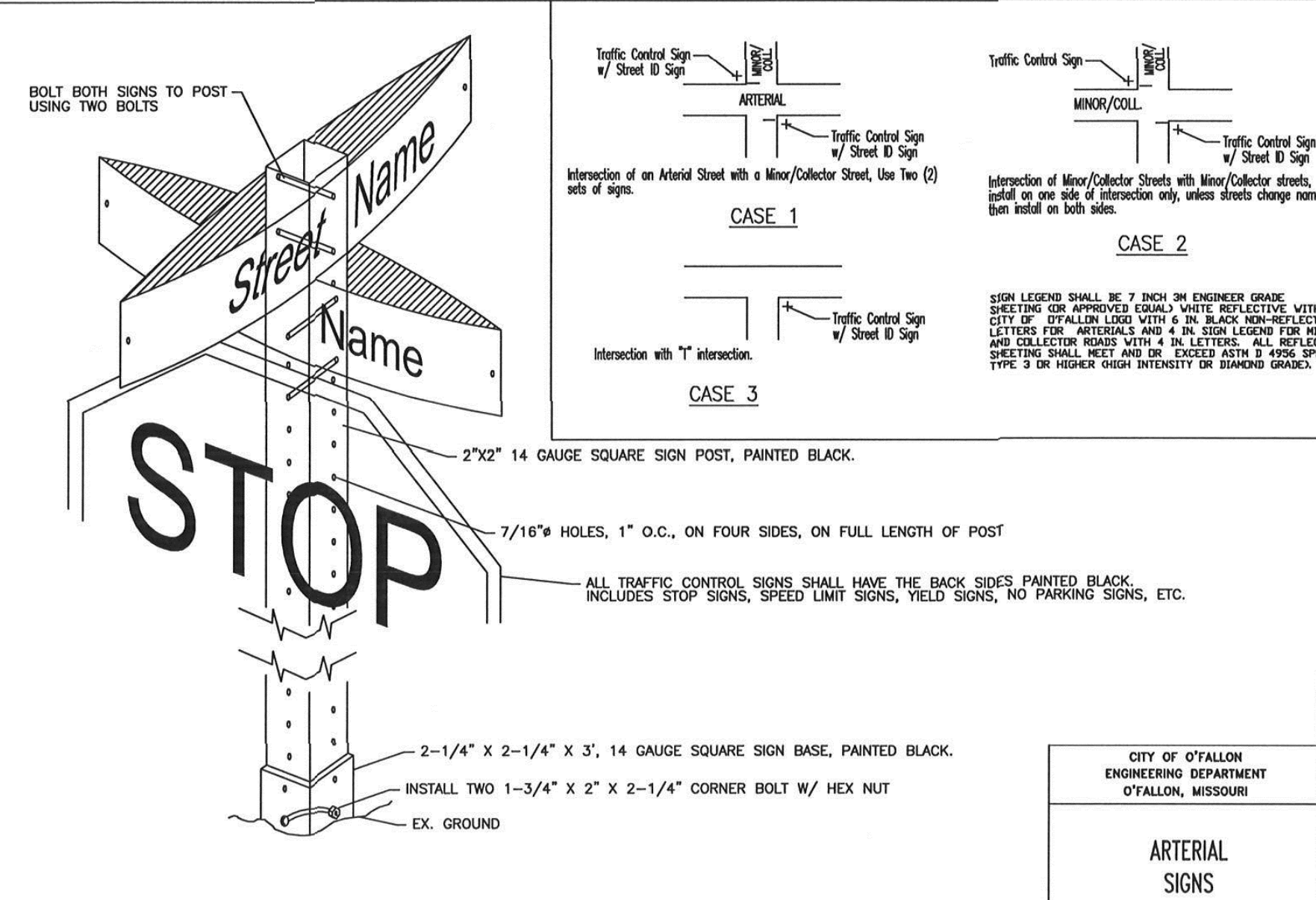
**Developer / Owner Information**  
MONTRACHET DEVELOPMENT LLC  
218 Chesterfield Towne Centre  
Chesterfield, Missouri 63005  
Phone: 636-530-6900

**P+Z No.** 15-15.01  
**City No.** 15-742-SP  
**Page No.** 52 of 63  
**DETAILS**

NOTE: ALL NON-REINFORCED CONCRETE SHALL BE 4,000 p.s.i. AT 28 DAYS.

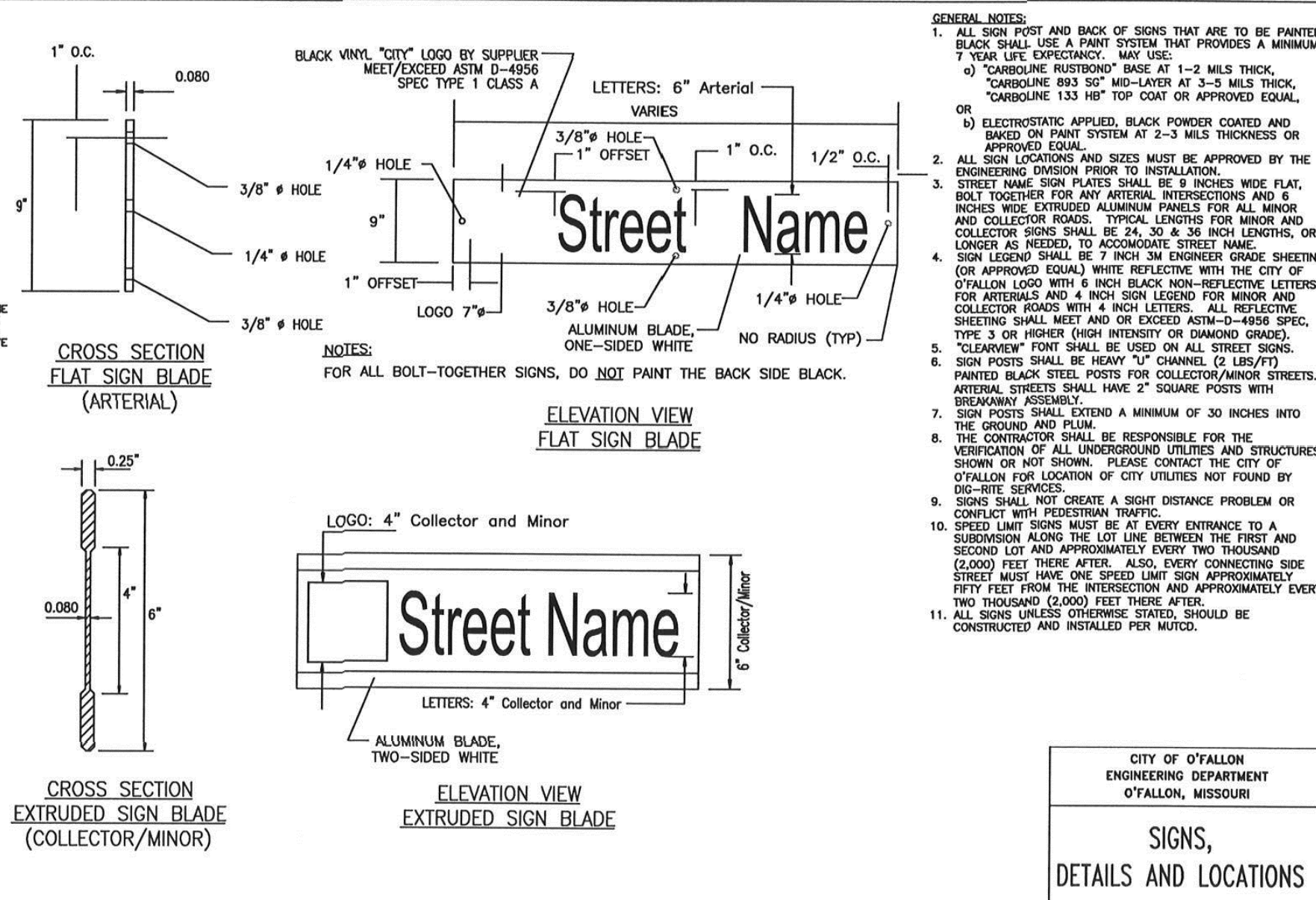


**TREATMENT OF TEMPORARY TERMINATIONS OF ROADWAY PAVEMENT**



**CITY OF O'FALLON**  
ENGINEERING DEPARTMENT  
O'FALLON, MISSOURI

**ARTERIAL SIGNS**



**CITY OF O'FALLON**  
ENGINEERING DEPARTMENT  
O'FALLON, MISSOURI

**SIGNS, DETAILS AND LOCATIONS**