

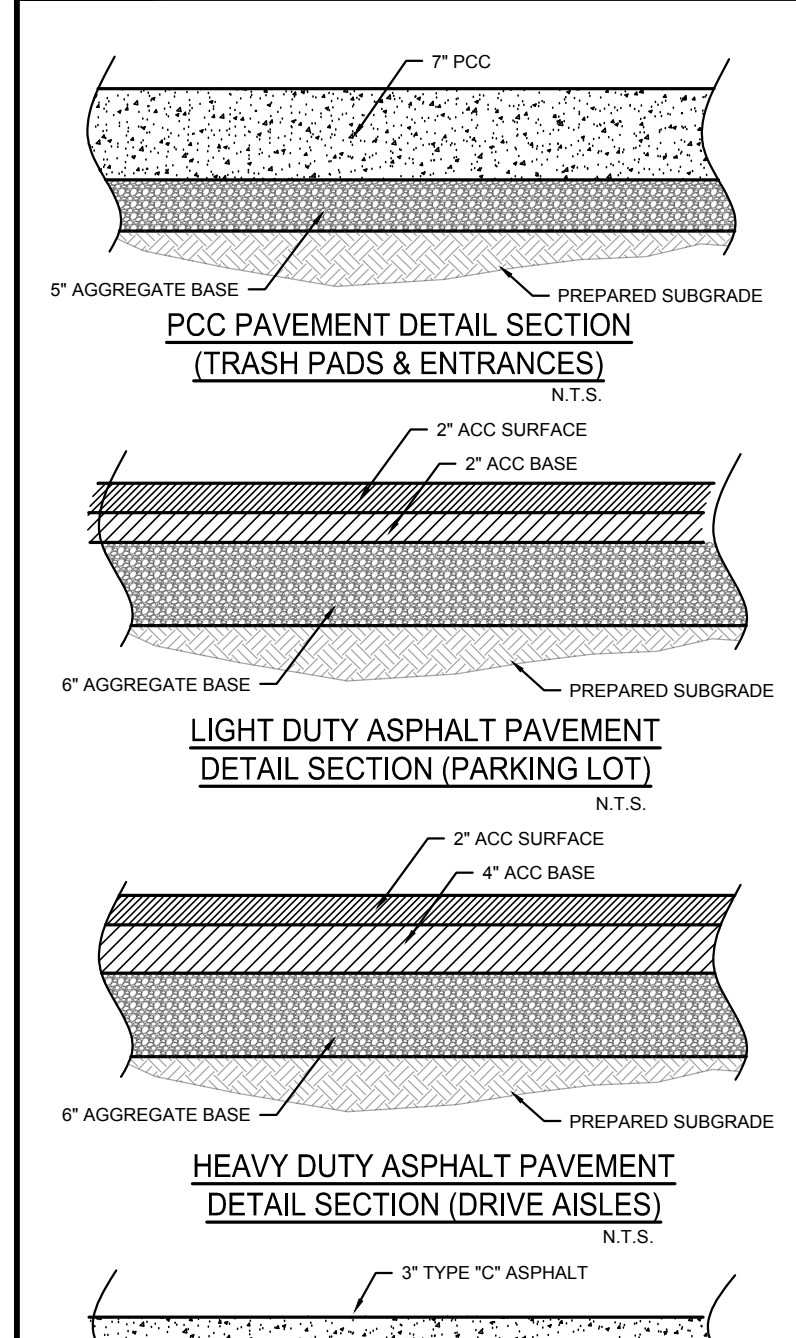
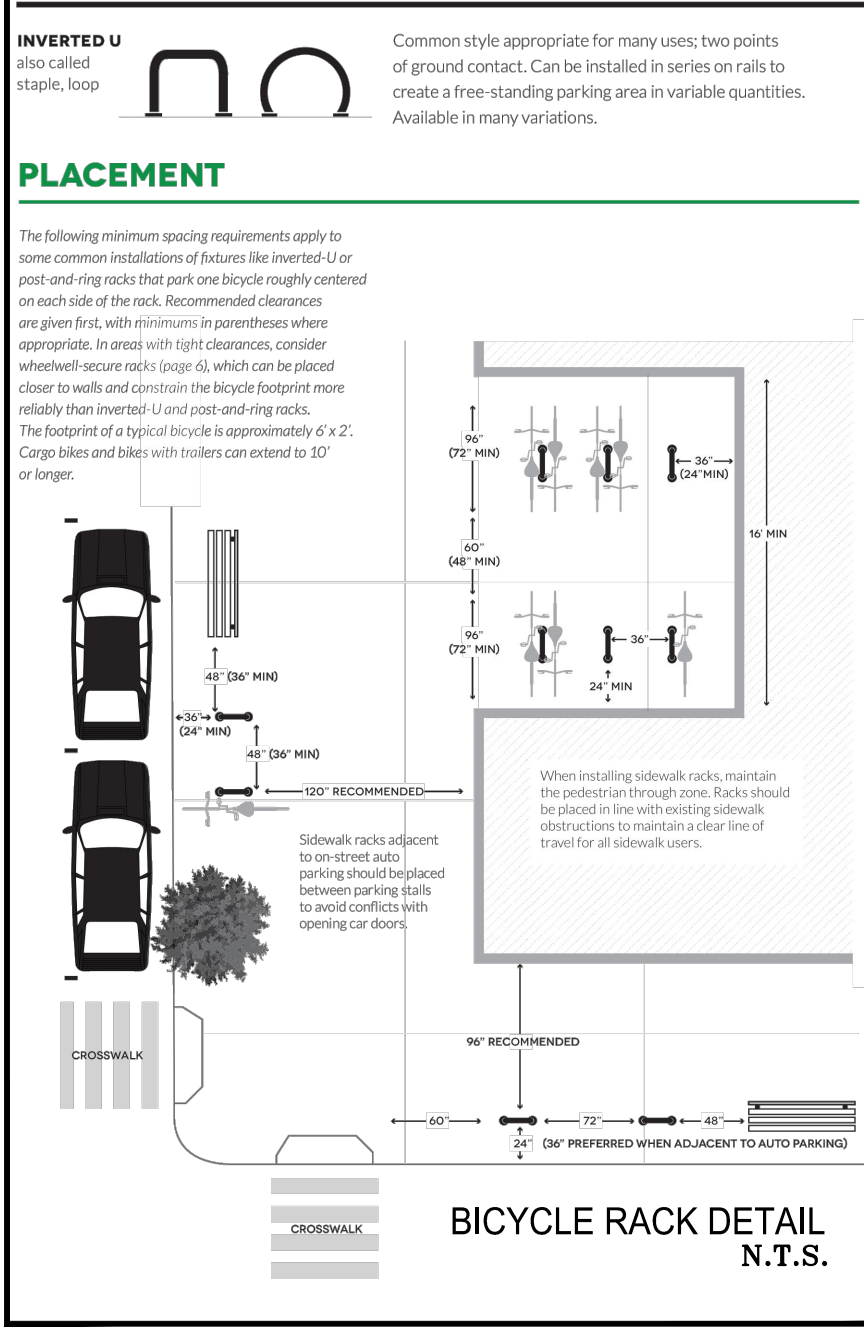
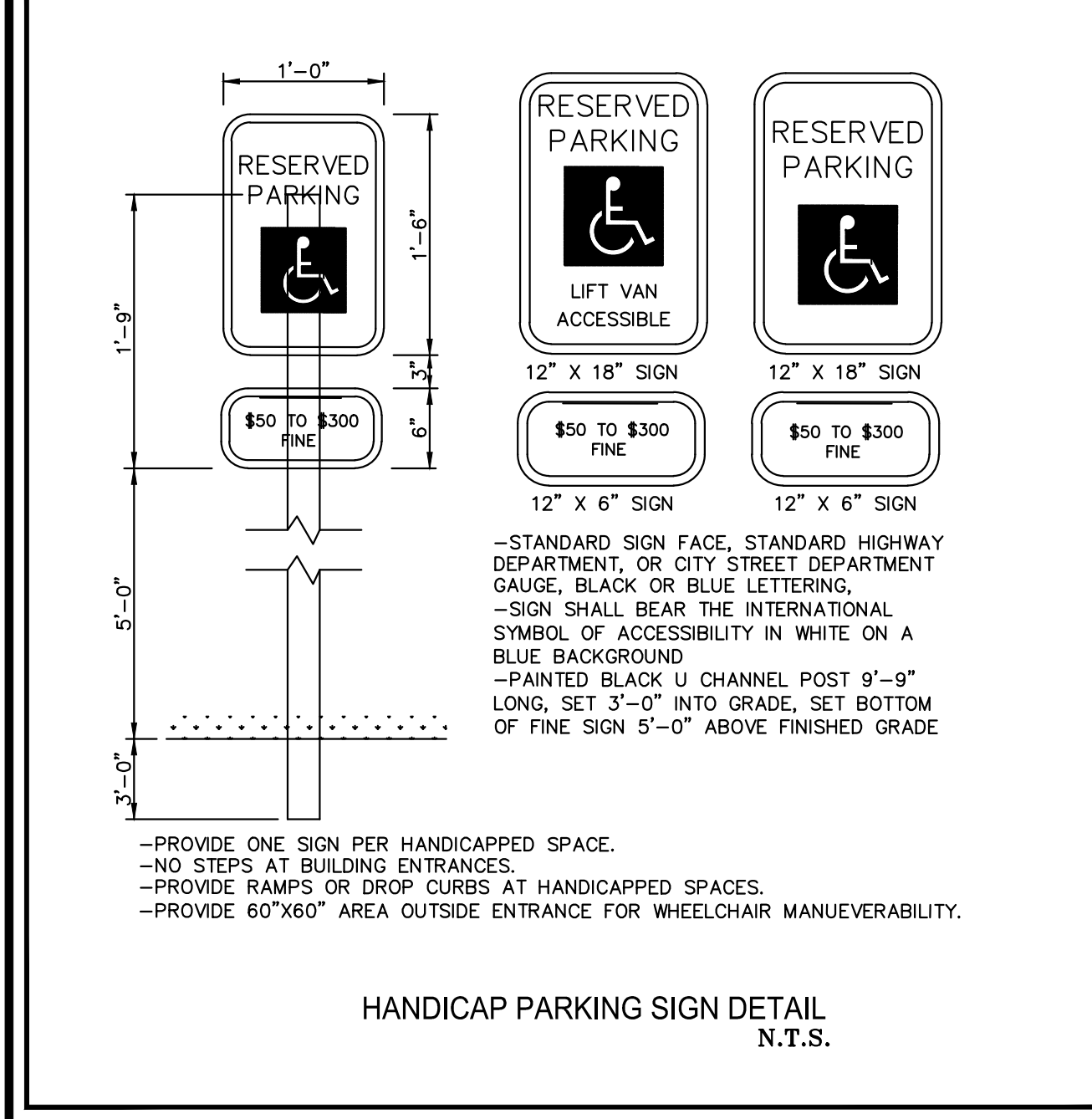
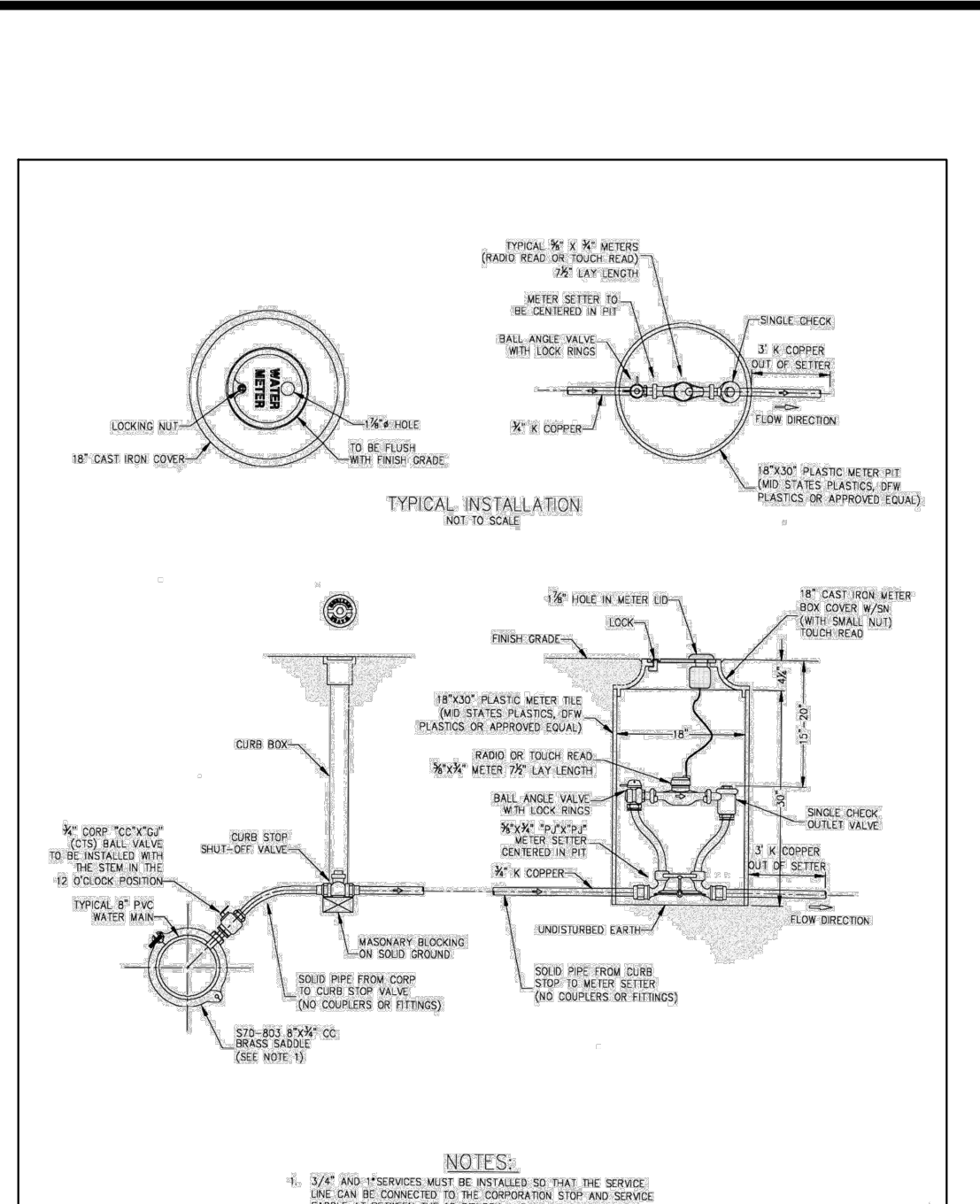
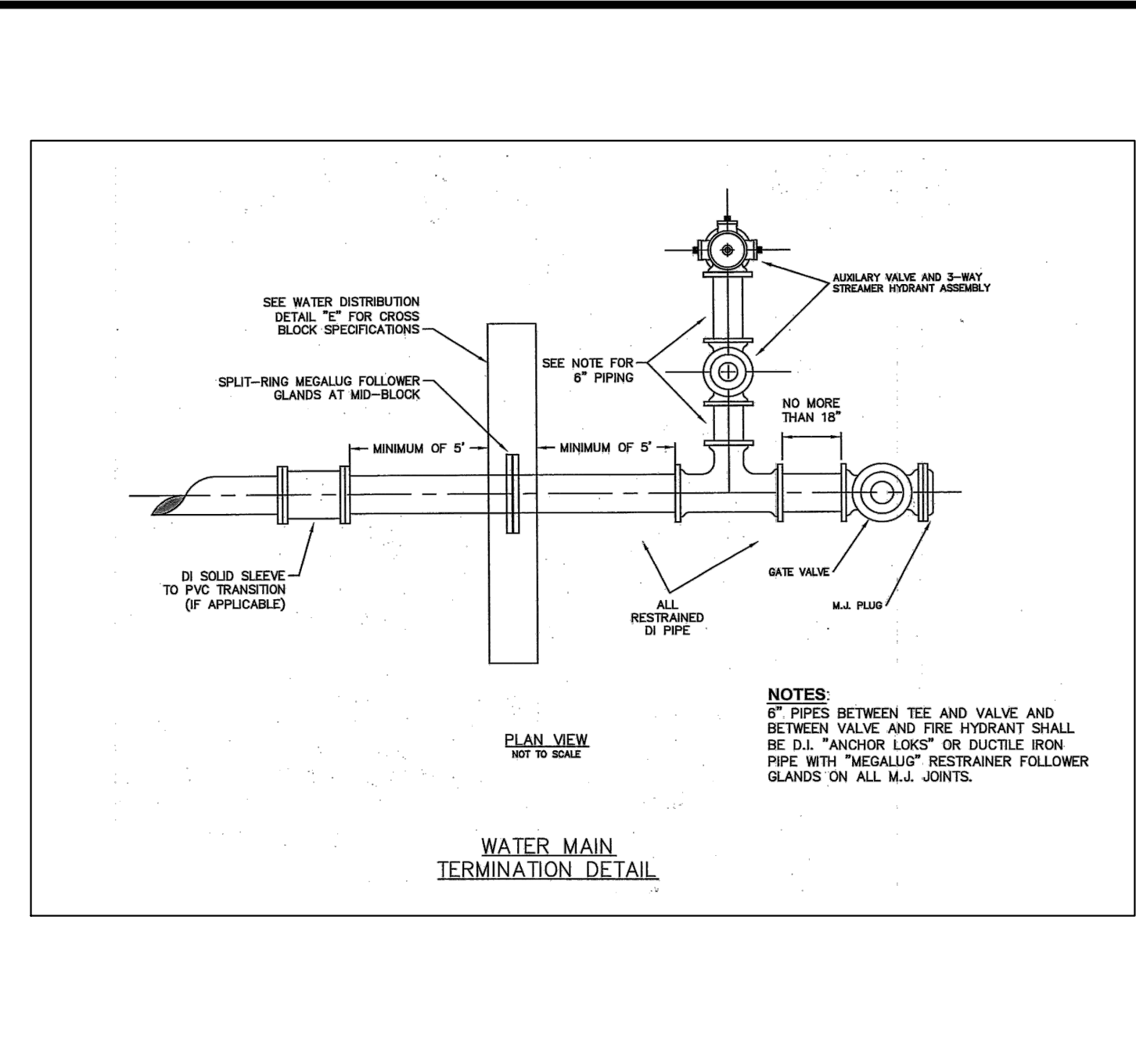
GENERAL NOTES

- Do not scale drawing. Follow dimensions.
- Sidewalks and sidewalk curb ramps shall be constructed in accordance with these details and the current approved Americans with Disabilities Act Accessibility Guidelines (ADAAG).
- Provide a landing at the top of each straight ramp when the curb along curb (C) is greater than 2% and less than 7%. For other values of C, landing is not required.
- Minimum sidewalk width along 6" vertical curb shall be 5 feet. Minimum sidewalk width along 5" rolled curb shall be 4 feet.
- Minimum sidewalk cross slope 0.02%/ft.
- All sidewalk sections shall be 4" thick, except where indicated on 7" block by shaded portions shown on details. All sidewalk sections and curb ramps, regardless of thickness, shall be cast for Concrete Sidewalk.
- Where curb ramp meets pavement, bullnose will not be permitted.
- Construct a diagonal ramp when the maximum corner radius allowed for a straight ramp is exceeded.
- If feasible concrete curb is constructed, either a dummy joint across bottom of ramp or curb line. If concrete curb is down-sloped, block off pavement to provide full depth curb across ramp from outer point of curb taper to outer point of curb taper.
- For sidewalk locations on Call-to-Service, refer to Pavement Construction Details.
- For pavement longitudinal and transverse joints and for bar requirements and dimensions, refer to the Pavement Construction Details for Joints and Curb, Std. Dep. C502.03.
- For roadway cross slopes, pavement types, and thicknesses, refer to Standard Typical Section.
- All curb ramps shall have a detectable warning complying with Americans with Disabilities Act Accessibility Guidelines (ADAAG).

TYPE 1 AND TYPE 2 CURB RAMPS

GRADE ALONG CURB (%)	MIN. LENGTH OF RAMP SLOPE (L.F.)
0 TO +1	6
+1.01 TO +2	7
+2.01 TO +3	8
+3.01 TO +4	10
GREATER THAN +4	12
	15

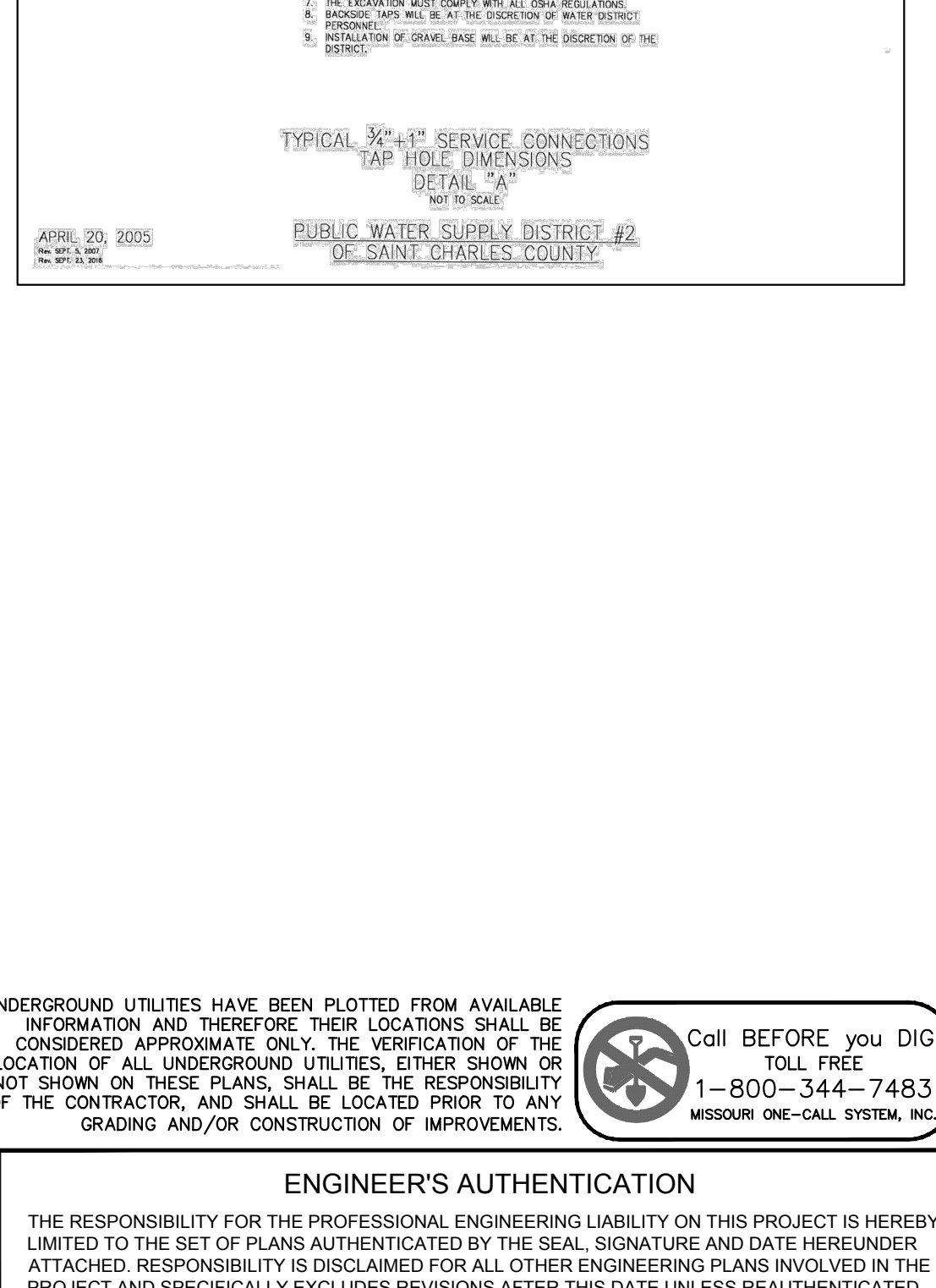
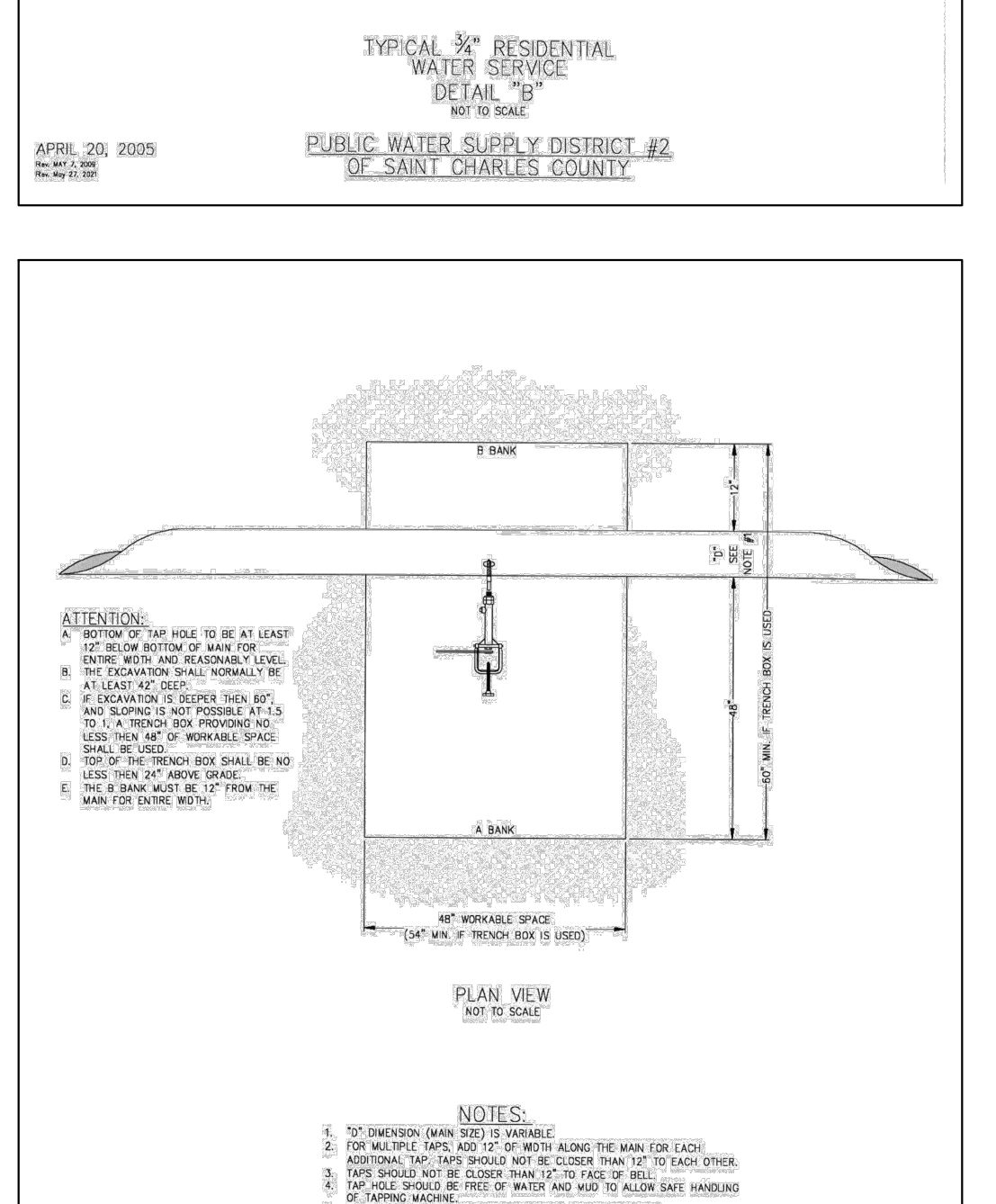
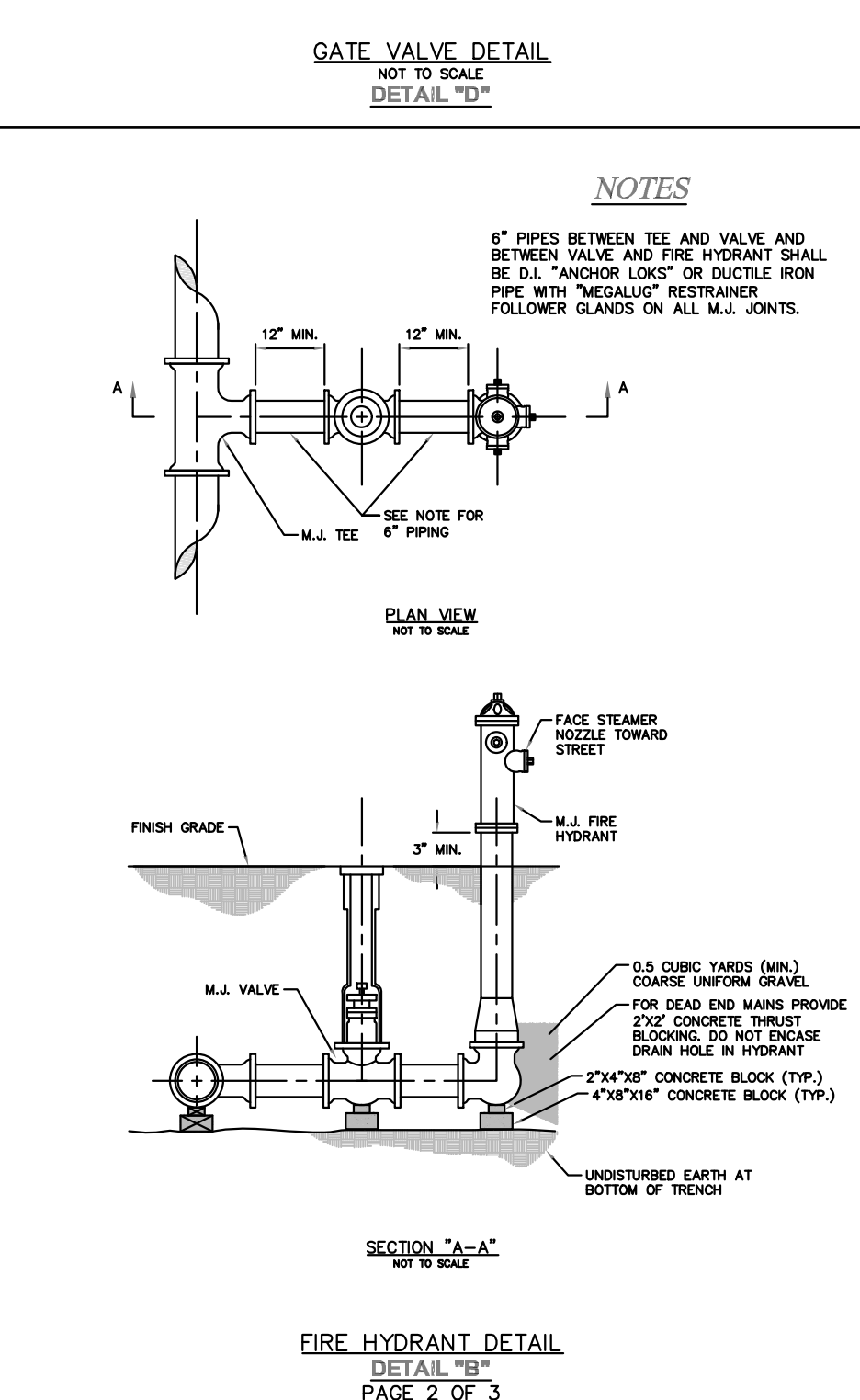
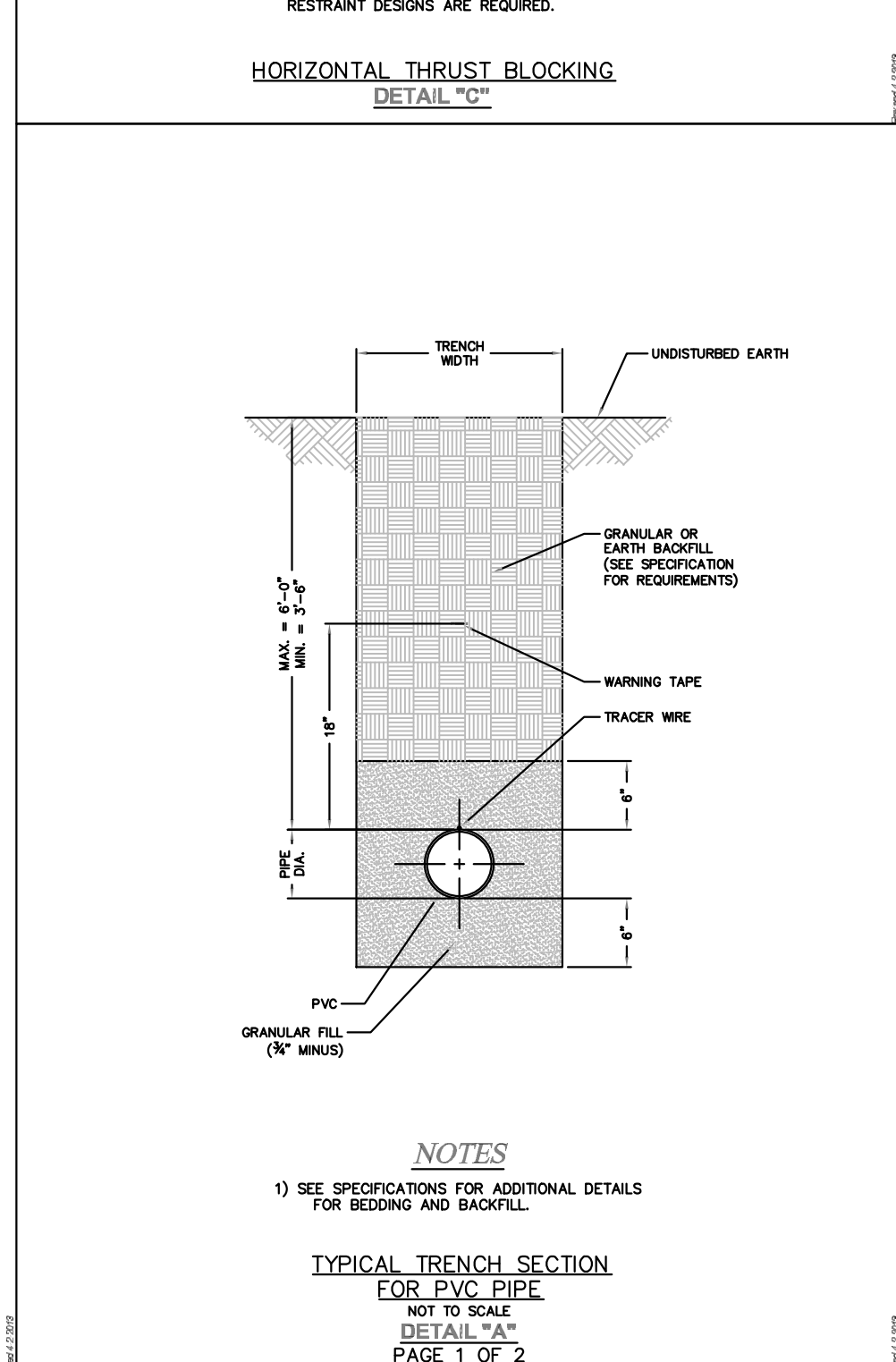
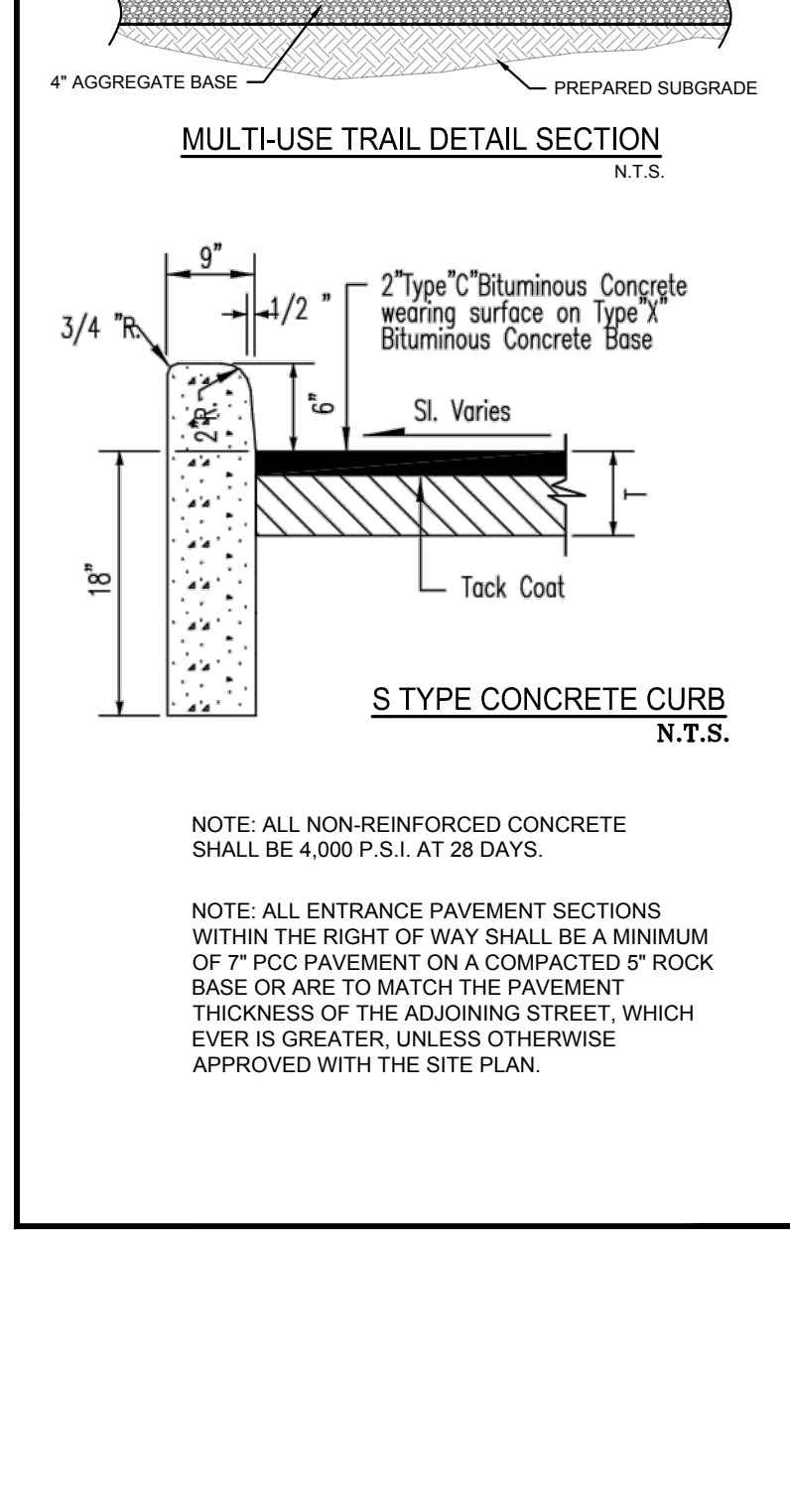
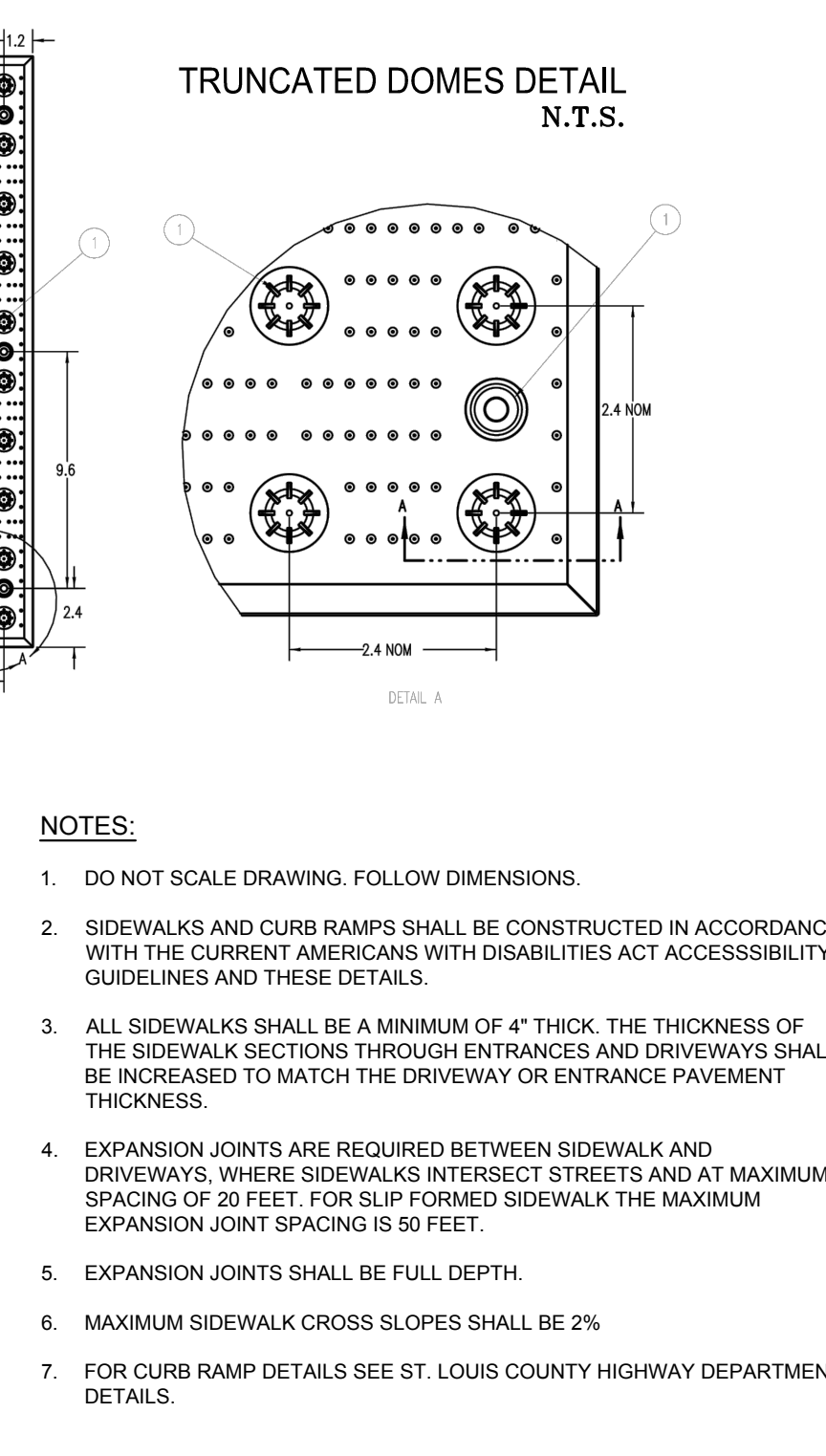
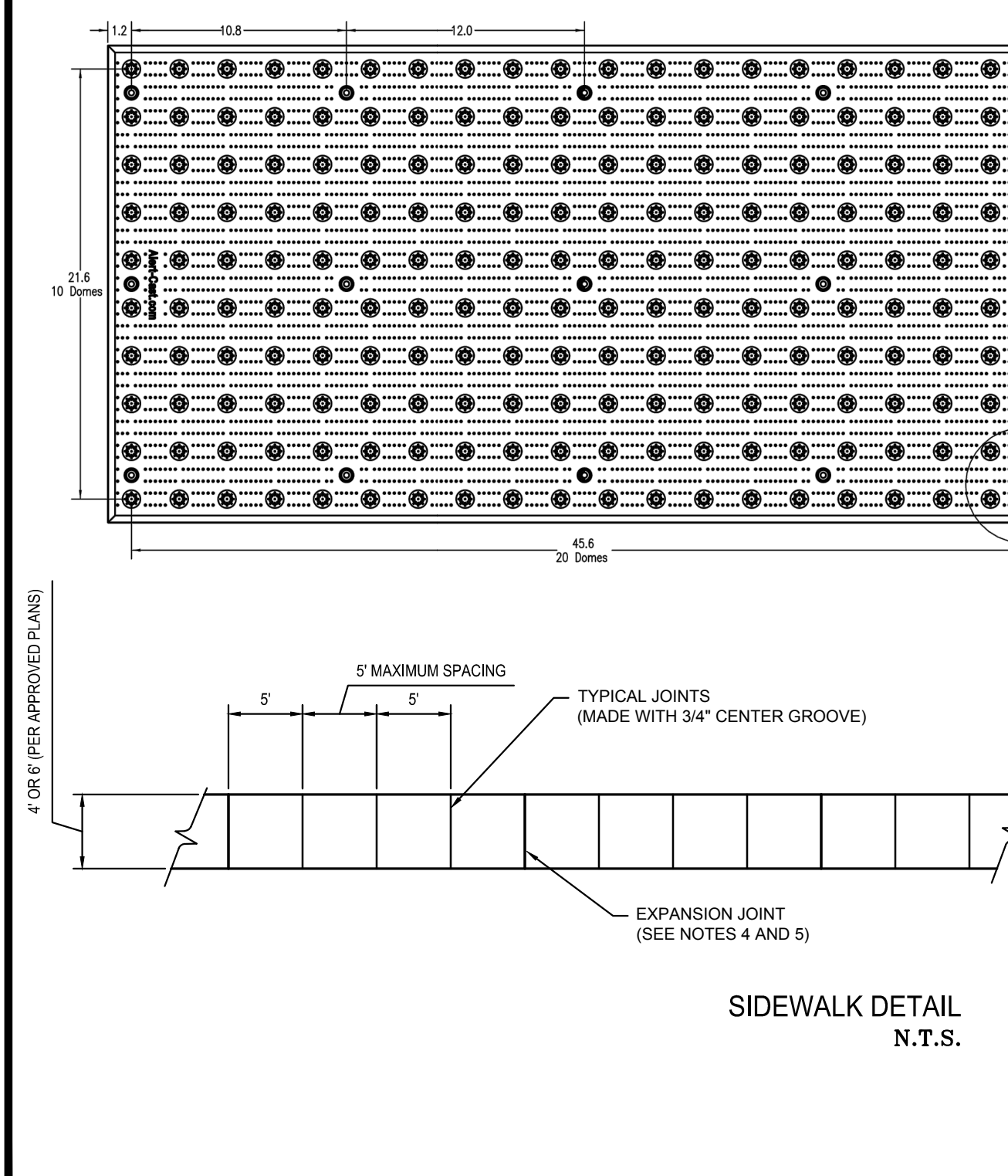
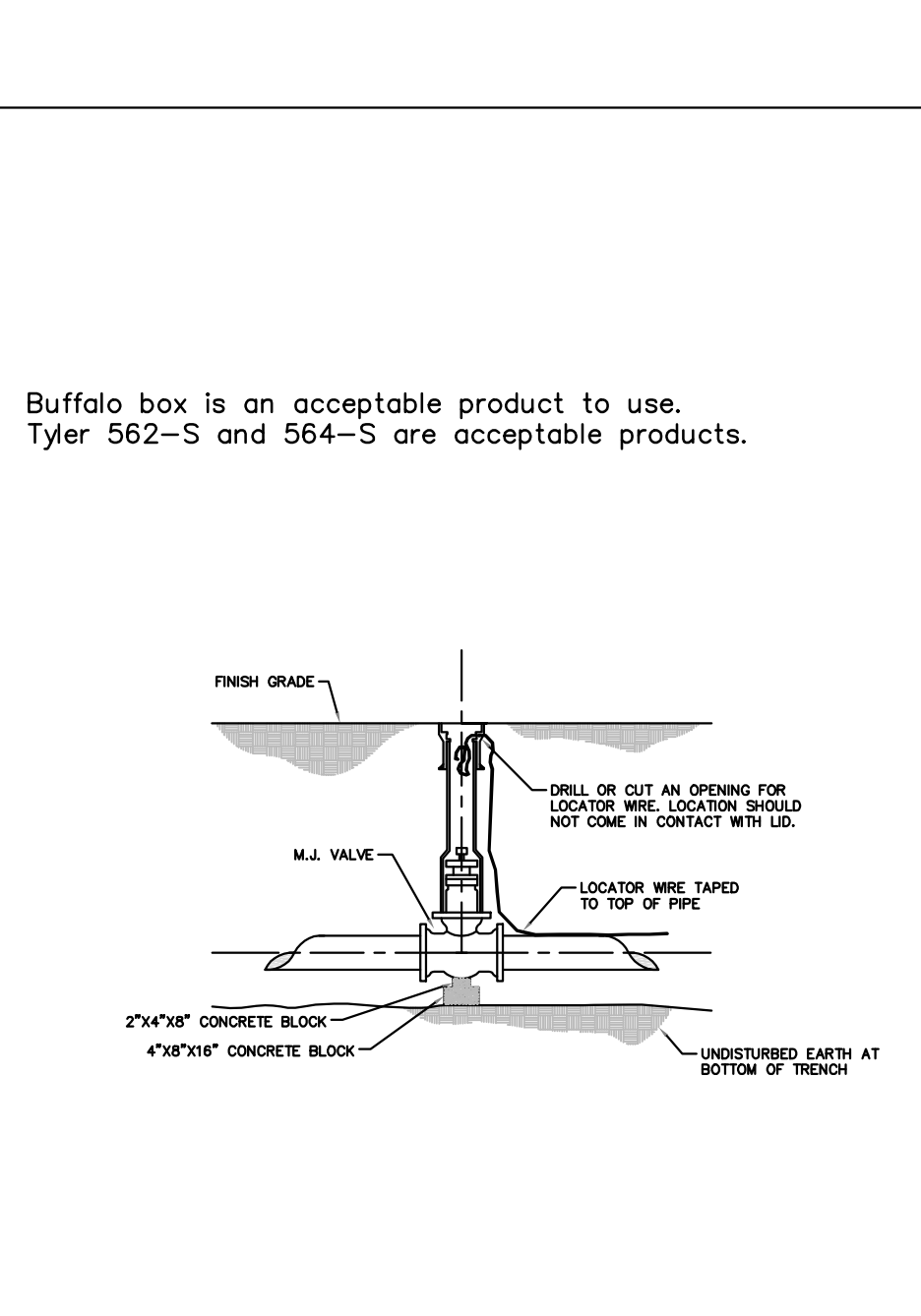
NOTE: Positive (+) % - Proceeding away from intersection and up a grade.
Negative (-) % - Proceeding away from intersection and down a grade.



THRUST BLOCK DIMENSIONS - INCHES

PIPE DIA.	ALL FTGS.	90 DEGREE TAPPING		45 DEGREE BEND		22-1/2 BEND		11-1/4 BEND	
		A	B	C	H	C	H	C	H
4	14	4	24	12	20	15	18	12	12
6	18	6	30	18	36	24	30	18	12
8	20	8	36	30	42	36	36	24	18
10	24	10	48	36	66	36	36	28	24
12	24	12	66	36	82	42	52	36	28

NOTE: FOR FITTINGS LARGER THAN 12" SPECIAL RESTRAINT DESIGN IS REQUIRED.



IMPROVEMENT PLAN
THE VILLAGES AT MONTRACHET
 WEST COMMERCIAL
 CONSTRUCTION DETAILS

ST. CHARLES ENGINEERING & SURVEYING, INC.
 801 S. FIFTH STREET, SUITE 202
 ST. CHARLES, MO 63301
 TEL: (636) 947-0607 FAX: (636) 947-2448

ST. CHARLES ENGINEERING AND SURVEYING, INC.
 PROFESSIONAL ENGINEERING AND LAND SURVEYING CORPORATION
 MISSOURI STATE CERTIFICATE OF AUTHORITY - 001647 & 000379

ORDER NO. 2024020
 DATE 08/25/2025
 9.0