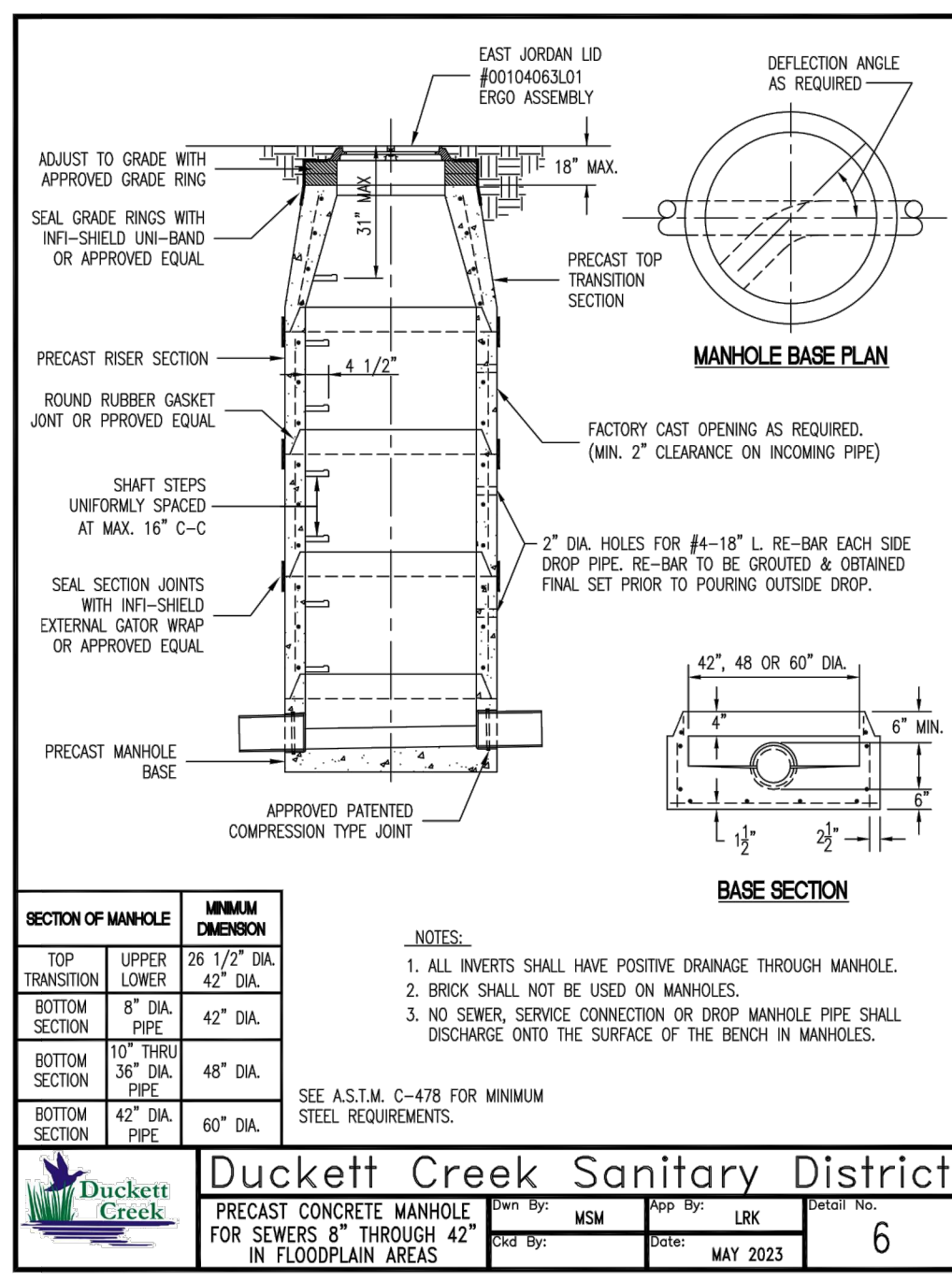
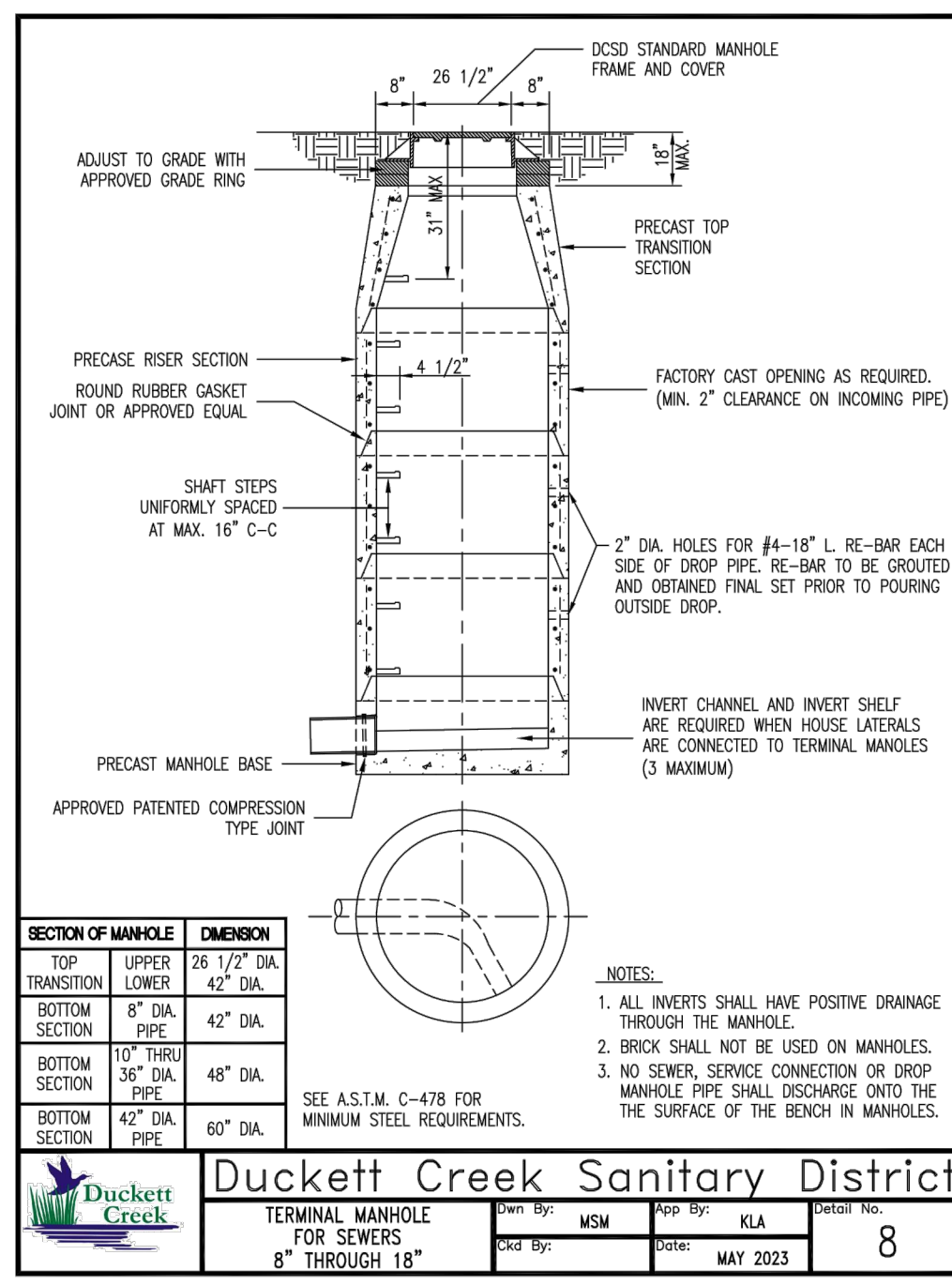


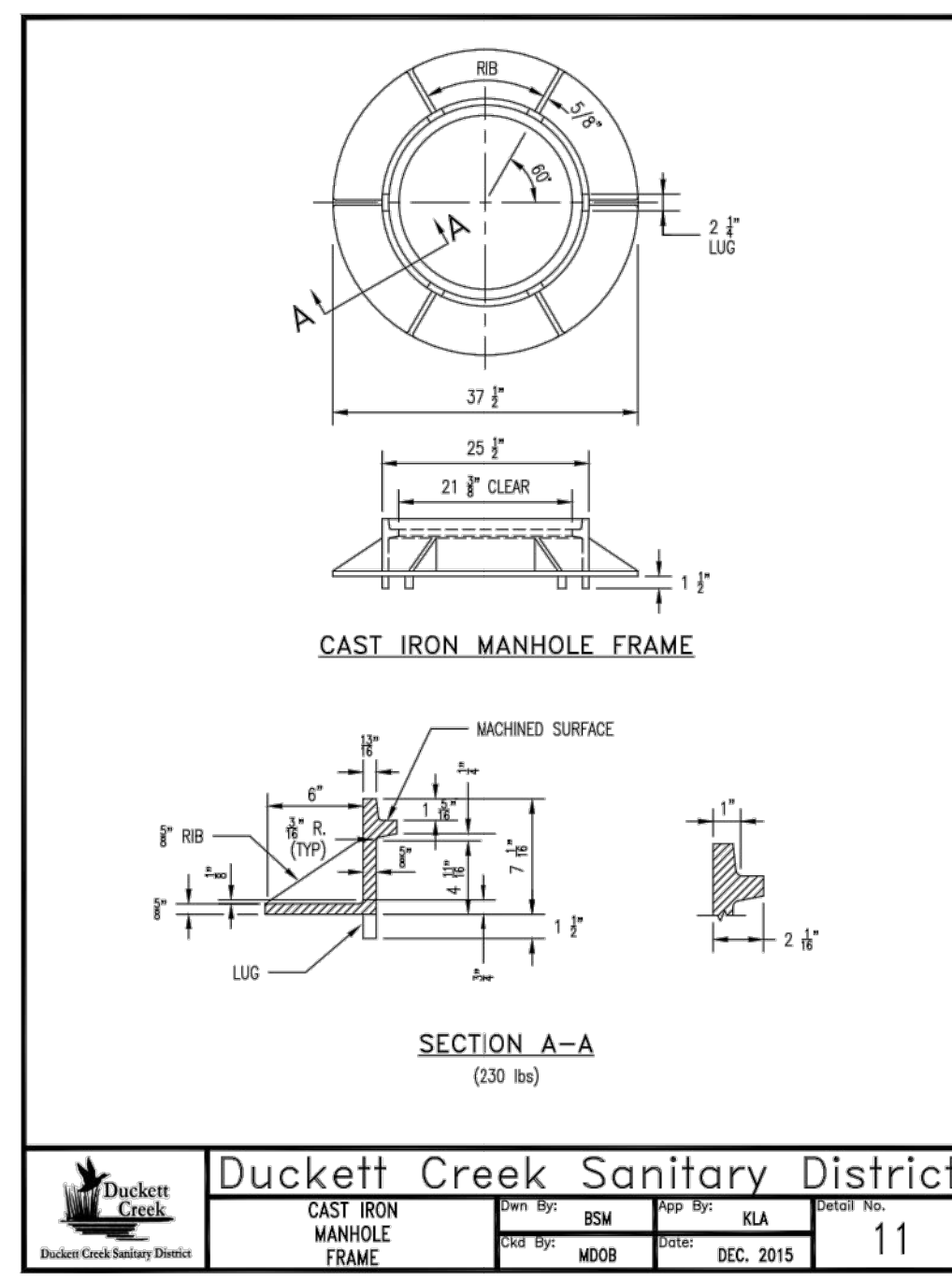
Duckett Creek Sanitary District
PIPE BEDDING CLASS "C"
FOR ALL EXCEPT
REINFORCED CONCRETE PIPE
11-14-2024
BSM
MOB
KLA
DEC. 2015
3



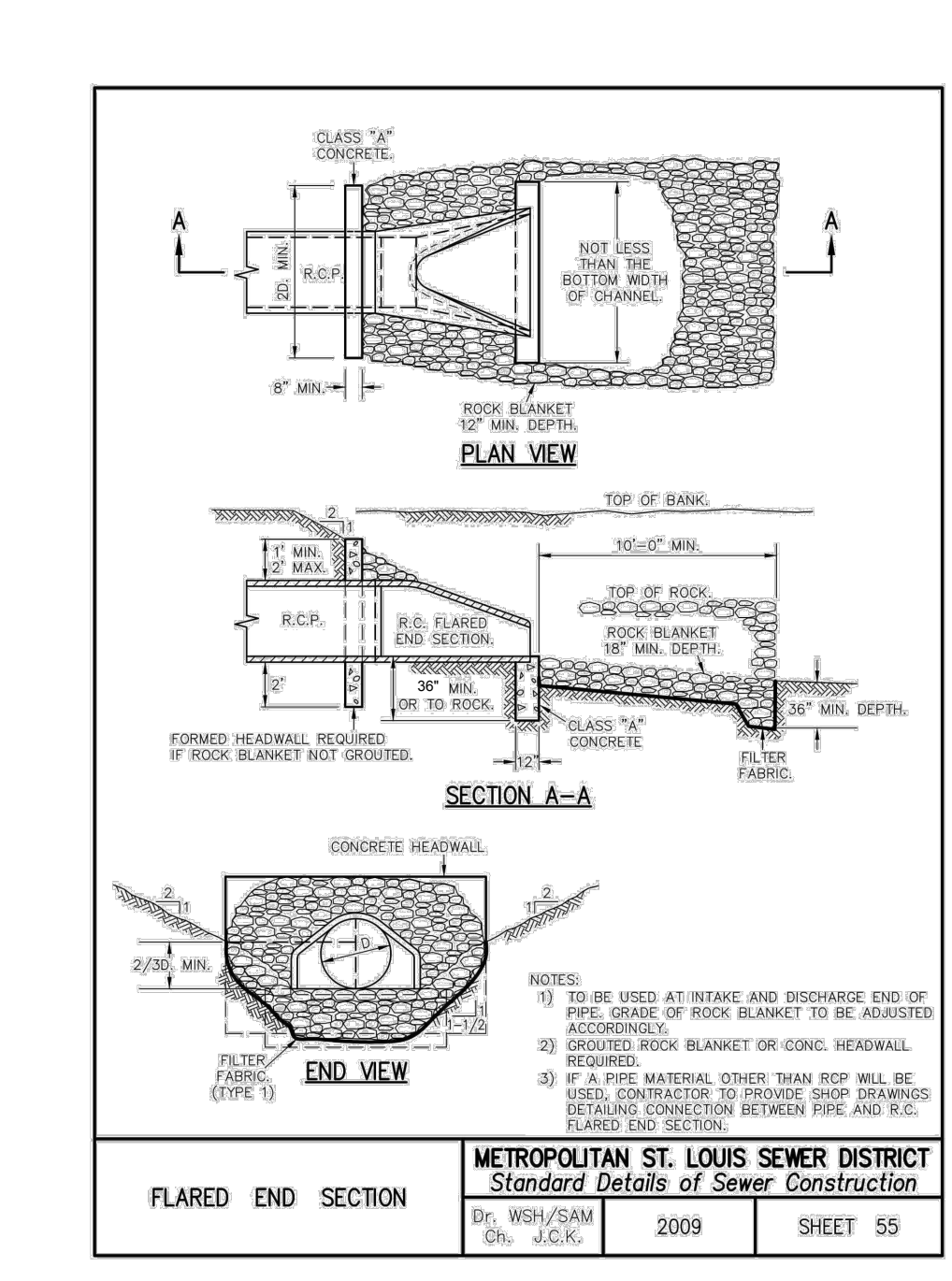
Duckett Creek Sanitary District
PRECAST CONCRETE MANHOLE
FOR SEWERS 8" THROUGH 42"
IN FLOODPLAIN AREAS
11-14-2024
BSM
MOB
KLA
DEC. 2015
6



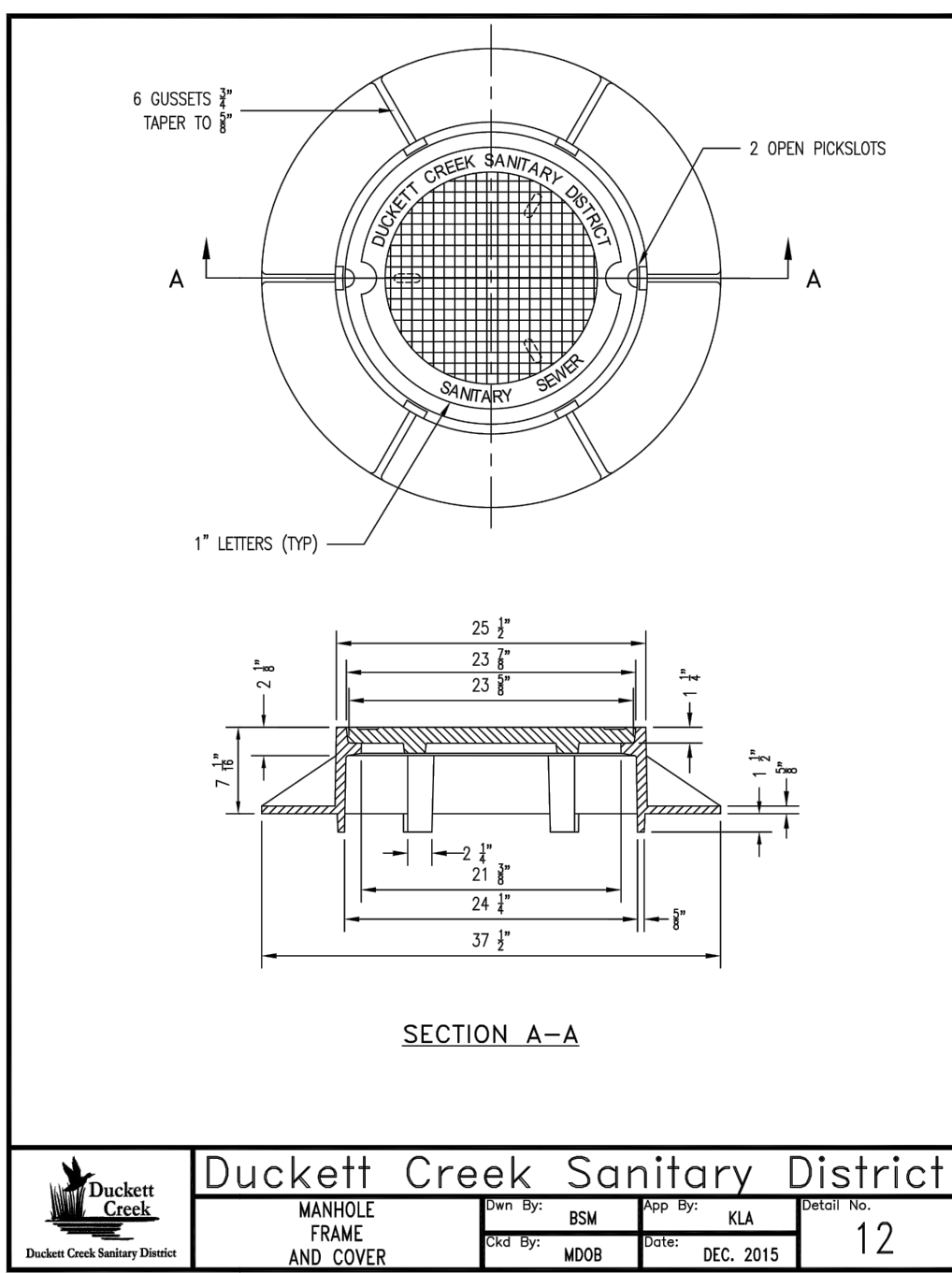
Duckett Creek Sanitary District
TERMINAL MANHOLE
FOR SEWERS 8" THROUGH 18"
11-14-2024
BSM
MOB
KLA
DEC. 2015
8



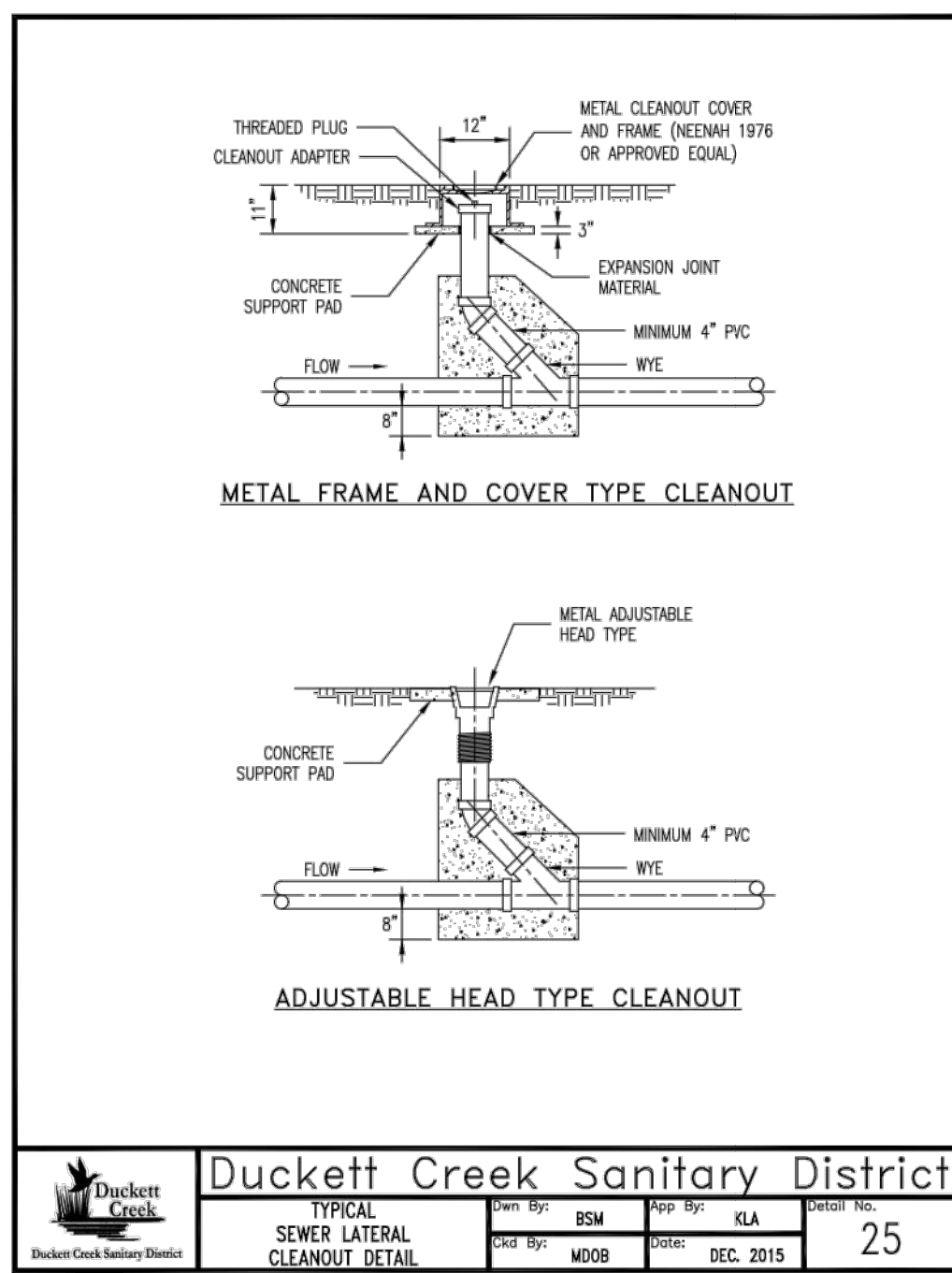
Duckett Creek Sanitary District
CAST IRON
MANHOLE
FRAME
11-14-2024
BSM
MOB
KLA
DEC. 2015
11



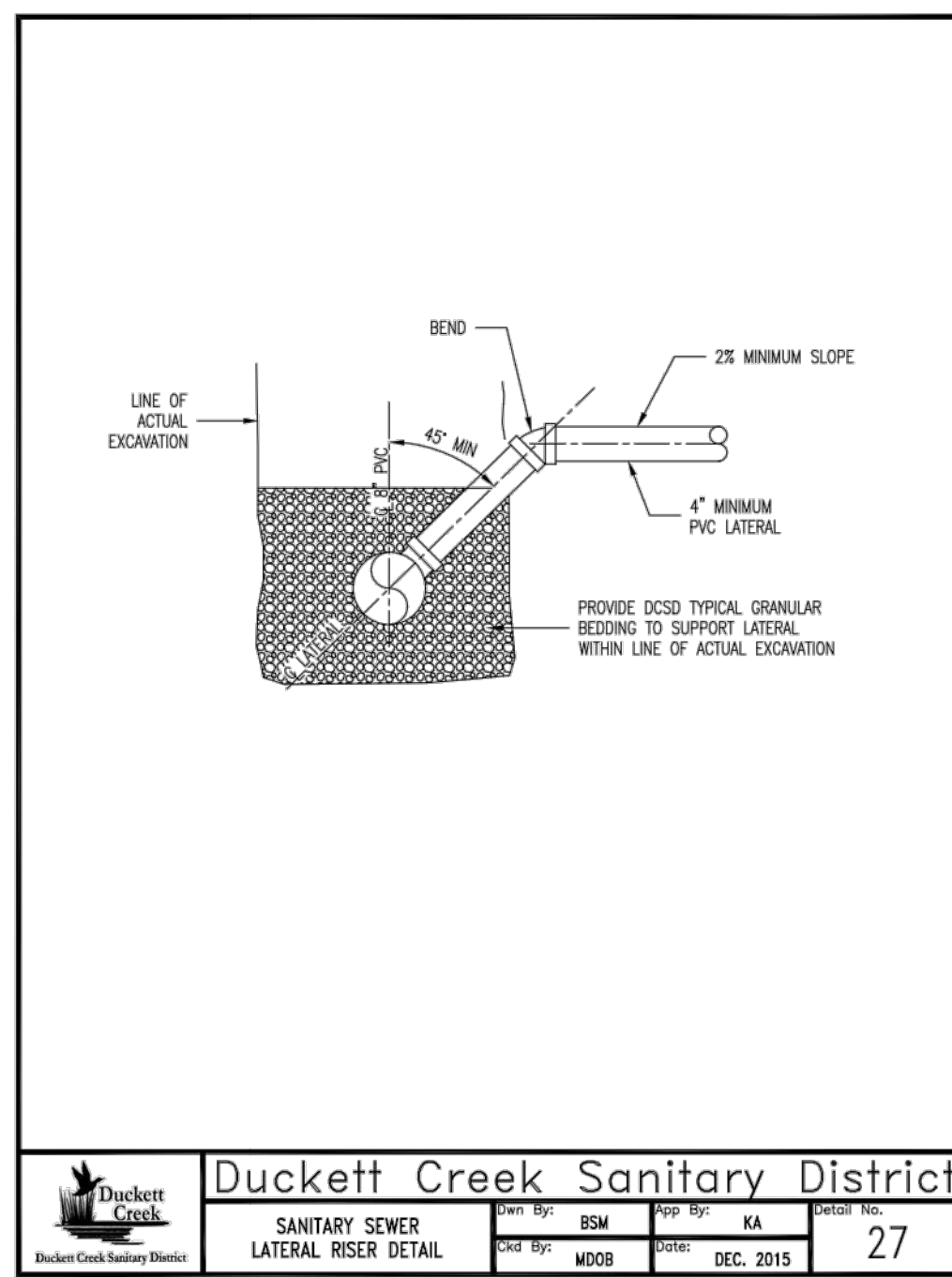
METROPOLITAN ST. LOUIS SEWER DISTRICT
Standard Details of Sewer Construction
11-14-2024
BSM
MOB
KLA
DEC. 2015
SHEET 55



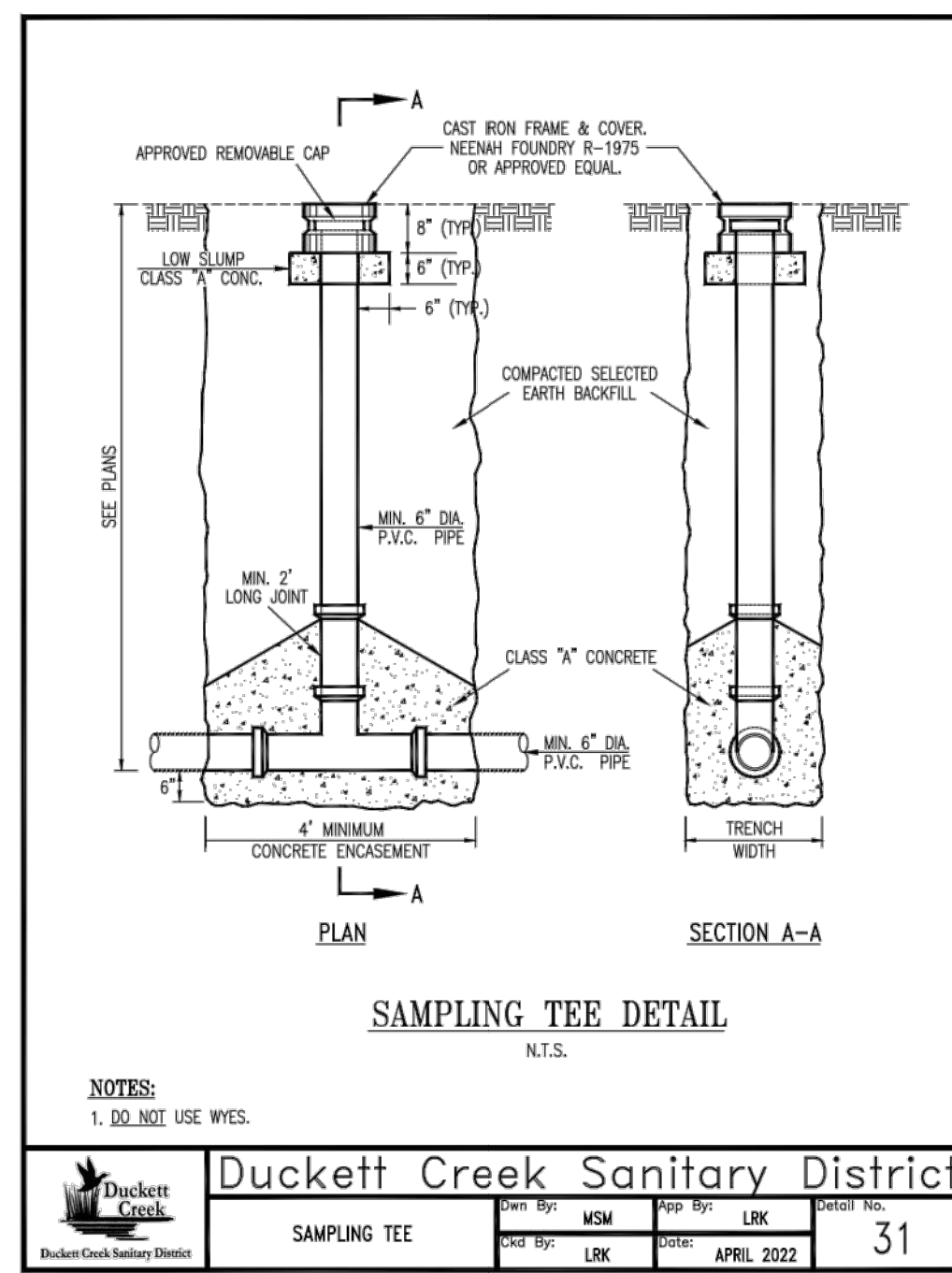
Duckett Creek Sanitary District
MANHOLE
FRAME
AND COVER
11-14-2024
BSM
MOB
KLA
DEC. 2015
12



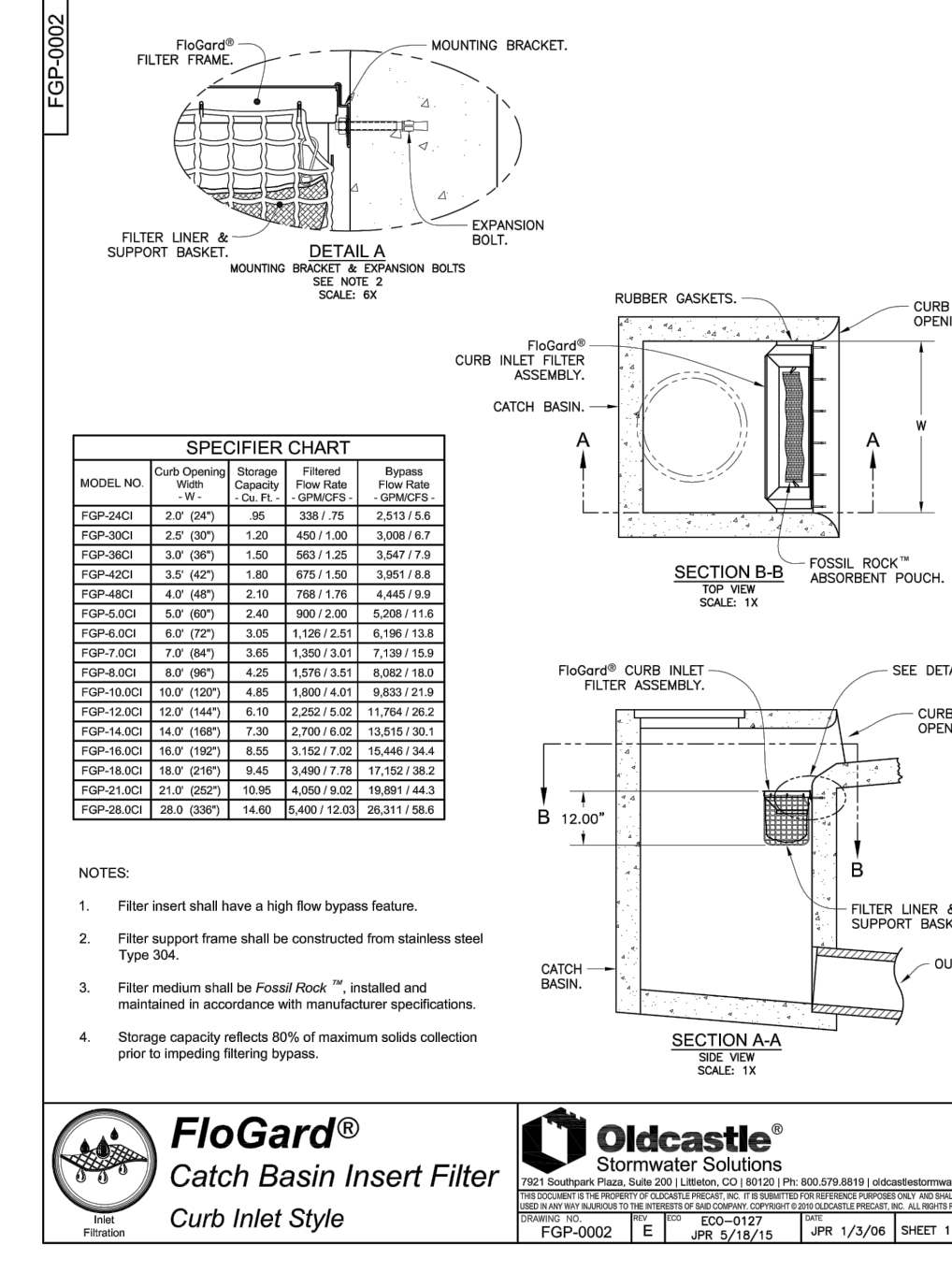
Duckett Creek Sanitary District
TYPICAL
SEWER LATERAL
CLEANOUT DETAIL
11-14-2024
BSM
MOB
KLA
DEC. 2015
25



Duckett Creek Sanitary District
SANITARY SEWER
LATERAL RISER DETAIL
11-14-2024
BSM
MOB
KLA
DEC. 2015
27



Duckett Creek Sanitary District
SAMPLING TEE
11-14-2024
BSM
MOB
KLA
APRIL 2022
31



FloGard®
Catch Basin Insert Filter
Curb Inlet Style
11-14-2024
BSM
MOB
KLA
APRIL 2022
SHEET 1 OF 1

Installation Techniques - Link-Seal® Modular Seats
Online Installation Video
Visit www.linkseal.com

- Center the pipe, cable or conduit in well opening or existing. Make sure the pipe is in the center of the well opening.
- Loosen rear pressure plate with end wrench. Loosen front pressure plate with end wrench. Loosen both ends of the pipe. Link-Seal® modular seats are intended to support the weight of the pipe.
- Check to be sure all ball heads are being the in-stroke. Extra slack or any in-stroke. Do not tighten. Link-Seal® modular seats. Note: On smaller diameter pipe, links may need to be selected.
- Slide ball assembly into annular space. For larger diameter pipe, start inserting Link-Seal® modular seats. Do not tighten any ball more than 4 turns. Continue in a clockwise direction. If a clockwise direction is not possible, reverse the direction of rotation.
- LS-325 thru LS-600: Using a hand tool, when head or offset velocity CRK, start at 12 O'clock. Do not tighten any ball more than 4 turns. Continue in a clockwise direction. If a clockwise direction is not possible, reverse the direction of rotation.
- LS-600 thru LS-915: Do not use power tools on Link-Seal® modular seats. Do not use power tools on Link-Seal® modular seats. Do not use power tools on Link-Seal® modular seats.

Always Wear Safety Equipment When Using Link-Seal® Modular Seats

- Wear safety glasses.
- Wear a hard hat.
- Wear gloves.
- Wear a safety harness.
- Wear a fall arrest system.
- Wear a life line.
- Wear a safety net.
- Wear a safety mat.
- Wear a safety cage.
- Wear a safety net.
- Wear a safety mat.
- Wear a safety cage.

If the seal doesn't appear to be correct using the techniques provided, call PSI at 713-747-6943 or 800-423-2416.

Installation Techniques - Link-Seal® Modular Seats
Online Installation Video
Visit www.linkseal.com

- Center the pipe, cable or conduit in well opening or existing. Make sure the pipe is in the center of the well opening.
- Loosen rear pressure plate with end wrench. Loosen front pressure plate with end wrench. Loosen both ends of the pipe. Link-Seal® modular seats are intended to support the weight of the pipe.
- Check to be sure all ball heads are being the in-stroke. Extra slack or any in-stroke. Do not tighten. Link-Seal® modular seats. Note: On smaller diameter pipe, links may need to be selected.
- Slide ball assembly into annular space. For larger diameter pipe, start inserting Link-Seal® modular seats. Do not tighten any ball more than 4 turns. Continue in a clockwise direction. If a clockwise direction is not possible, reverse the direction of rotation.
- LS-325 thru LS-600: Using a hand tool, when head or offset velocity CRK, start at 12 O'clock. Do not tighten any ball more than 4 turns. Continue in a clockwise direction. If a clockwise direction is not possible, reverse the direction of rotation.
- LS-600 thru LS-915: Do not use power tools on Link-Seal® modular seats. Do not use power tools on Link-Seal® modular seats. Do not use power tools on Link-Seal® modular seats.

Always Wear Safety Equipment When Using Link-Seal® Modular Seats

- Wear safety glasses.
- Wear a hard hat.
- Wear gloves.
- Wear a safety harness.
- Wear a fall arrest system.
- Wear a life line.
- Wear a safety net.
- Wear a safety mat.
- Wear a safety cage.
- Wear a safety net.
- Wear a safety mat.
- Wear a safety cage.

If the seal doesn't appear to be correct using the techniques provided, call PSI at 713-747-6943 or 800-423-2416.

Installation Techniques - Link-Seal® Modular Seats
Online Installation Video
Visit www.linkseal.com

- Center the pipe, cable or conduit in well opening or existing. Make sure the pipe is in the center of the well opening.
- Loosen rear pressure plate with end wrench. Loosen front pressure plate with end wrench. Loosen both ends of the pipe. Link-Seal® modular seats are intended to support the weight of the pipe.
- Check to be sure all ball heads are being the in-stroke. Extra slack or any in-stroke. Do not tighten. Link-Seal® modular seats. Note: On smaller diameter pipe, links may need to be selected.
- Slide ball assembly into annular space. For larger diameter pipe, start inserting Link-Seal® modular seats. Do not tighten any ball more than 4 turns. Continue in a clockwise direction. If a clockwise direction is not possible, reverse the direction of rotation.
- LS-325 thru LS-600: Using a hand tool, when head or offset velocity CRK, start at 12 O'clock. Do not tighten any ball more than 4 turns. Continue in a clockwise direction. If a clockwise direction is not possible, reverse the direction of rotation.
- LS-600 thru LS-915: Do not use power tools on Link-Seal® modular seats. Do not use power tools on Link-Seal® modular seats. Do not use power tools on Link-Seal® modular seats.

Always Wear Safety Equipment When Using Link-Seal® Modular Seats

- Wear safety glasses.
- Wear a hard hat.
- Wear gloves.
- Wear a safety harness.
- Wear a fall arrest system.
- Wear a life line.
- Wear a safety net.
- Wear a safety mat.
- Wear a safety cage.
- Wear a safety net.
- Wear a safety mat.
- Wear a safety cage.

If the seal doesn't appear to be correct using the techniques provided, call PSI at 713-747-6943 or 800-423-2416.

Installation Techniques - Link-Seal® Modular Seats
Online Installation Video
Visit www.linkseal.com

- Center the pipe, cable or conduit in well opening or existing. Make sure the pipe is in the center of the well opening.
- Loosen rear pressure plate with end wrench. Loosen front pressure plate with end wrench. Loosen both ends of the pipe. Link-Seal® modular seats are intended to support the weight of the pipe.
- Check to be sure all ball heads are being the in-stroke. Extra slack or any in-stroke. Do not tighten. Link-Seal® modular seats. Note: On smaller diameter pipe, links may need to be selected.
- Slide ball assembly into annular space. For larger diameter pipe, start inserting Link-Seal® modular seats. Do not tighten any ball more than 4 turns. Continue in a clockwise direction. If a clockwise direction is not possible, reverse the direction of rotation.
- LS-325 thru LS-600: Using a hand tool, when head or offset velocity CRK, start at 12 O'clock. Do not tighten any ball more than 4 turns. Continue in a clockwise direction. If a clockwise direction is not possible, reverse the direction of rotation.
- LS-600 thru LS-915: Do not use power tools on Link-Seal® modular seats. Do not use power tools on Link-Seal® modular seats. Do not use power tools on Link-Seal® modular seats.

Always Wear Safety Equipment When Using Link-Seal® Modular Seats

- Wear safety glasses.
- Wear a hard hat.
- Wear gloves.
- Wear a safety harness.
- Wear a fall arrest system.
- Wear a life line.
- Wear a safety net.
- Wear a safety mat.
- Wear a safety cage.
- Wear a safety net.
- Wear a safety mat.
- Wear a safety cage.

If the seal doesn't appear to be correct using the techniques provided, call PSI at 713-747-6943 or 800-423-2416.

Installation Techniques - Link-Seal® Modular Seats
Online Installation Video
Visit www.linkseal.com

- Center the pipe, cable or conduit in well opening or existing. Make sure the pipe is in the center of the well opening.
- Loosen rear pressure plate with end wrench. Loosen front pressure plate with end wrench. Loosen both ends of the pipe. Link-Seal® modular seats are intended to support the weight of the pipe.
- Check to be sure all ball heads are being the in-stroke. Extra slack or any in-stroke. Do not tighten. Link-Seal® modular seats. Note: On smaller diameter pipe, links may need to be selected.
- Slide ball assembly into annular space. For larger diameter pipe, start inserting Link-Seal® modular seats. Do not tighten any ball more than 4 turns. Continue in a clockwise direction. If a clockwise direction is not possible, reverse the direction of rotation.
- LS-325 thru LS-600: Using a hand tool, when head or offset velocity CRK, start at 12 O'clock. Do not tighten any ball more than 4 turns. Continue in a clockwise direction. If a clockwise direction is not possible, reverse the direction of rotation.
- LS-600 thru LS-915: Do not use power tools on Link-Seal® modular seats. Do not use power tools on Link-Seal® modular seats. Do not use power tools on Link-Seal® modular seats.

Always Wear Safety Equipment When Using Link-Seal® Modular Seats

- Wear safety glasses.
- Wear a hard hat.
- Wear gloves.
- Wear a safety harness.
- Wear a fall arrest system.
- Wear a life line.
- Wear a safety net.
- Wear a safety mat.
- Wear a safety cage.
- Wear a safety net.
- Wear a safety mat.
- Wear a safety cage.

If the seal doesn't appear to be correct using the techniques provided, call PSI at 713-747-6943 or 800-423-2416.

IMPROVEMENT PLAN
THE VILLAGES AT MONTRACHET
WEST COMMERCIAL
CONSTRUCTION DETAILS

ST. CHARLES ENGINEERING & SURVEYING, INC.
801 S. FIFTH STREET, SUITE 202
ST. CHARLES, MO 63301
TEL: (636) 947-0607 FAX: (636) 947-2448
ST. CHARLES ENGINEERING AND SURVEYING, INC.
PROFESSIONAL ENGINEERING AND LAND SURVEYING CORPORATION
MISSOURI STATE CERTIFICATES OF AUTHORITY - 001647 & 000379

S E S

MICHAEL NEWELL
MEMBER
NO. 22483
REGISTERED PROFESSIONAL ENGINEER
EXPIRES 08/25/2025

Call BEFORE you DIG
TOLL FREE
1-800-344-7483
MISSOURI ONE-CALL SYSTEM, INC.

ENGINEER'S AUTHENTICATION
THE RESPONSIBILITY FOR THE PROFESSIONAL ENGINEERING LIABILITY ON THIS PROJECT IS HEREBY LIMITED TO THE SET OF PLANS AUTHENTICATED BY THE SEAL, SIGNATURE AND DATE HEREUNDER ATTACHED. RESPONSIBILITY IS DISCLAIMED FOR ALL OTHER ENGINEERING PLANS INVOLVED IN THE PROJECT AND SPECIFICALLY EXCLUDES REVISIONS AFTER THIS DATE UNLESS REAUTHENTICATED.

ORDER NO.
2024020
DATE
08/25/2025
92