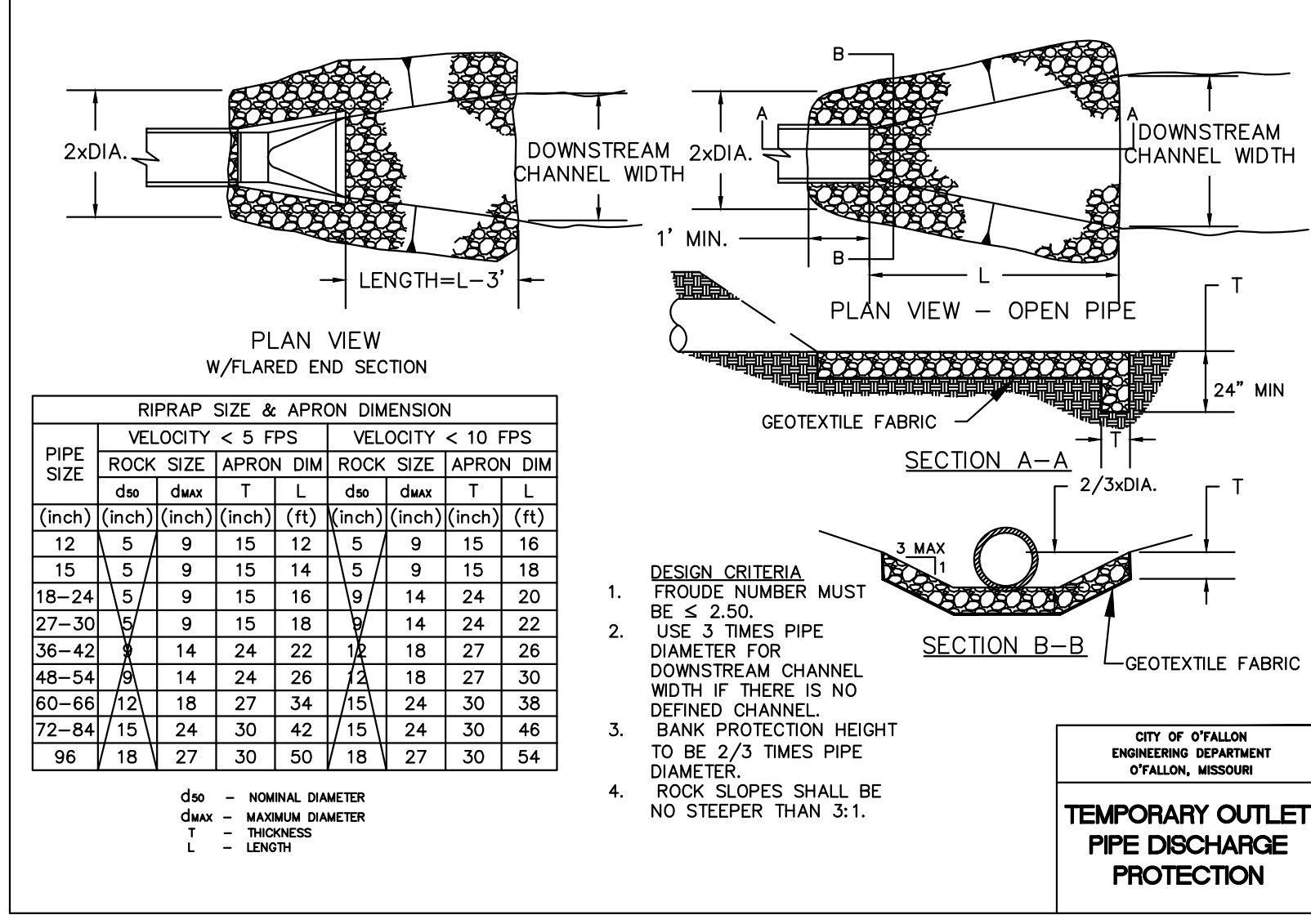
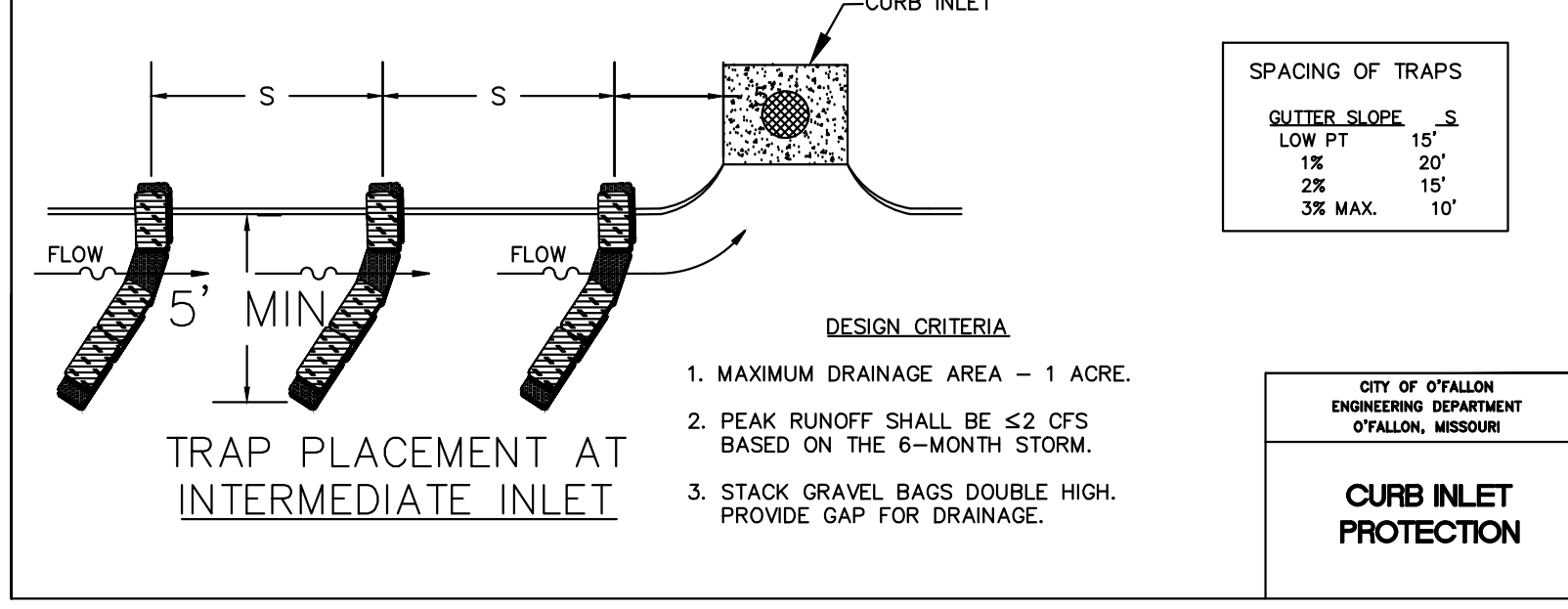
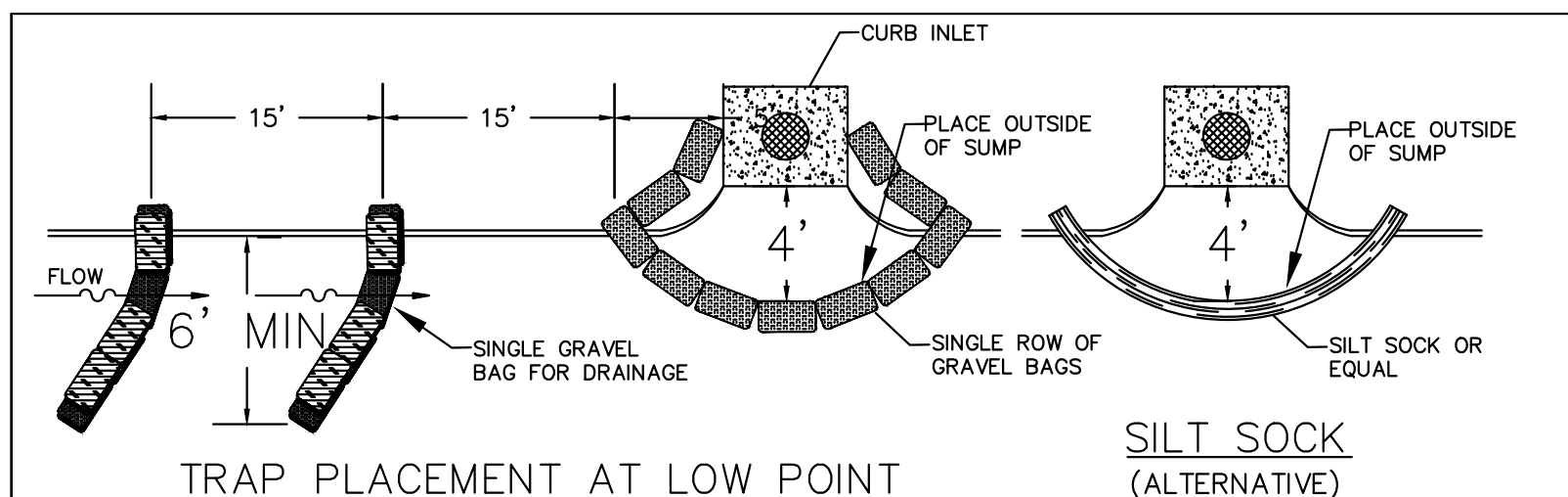
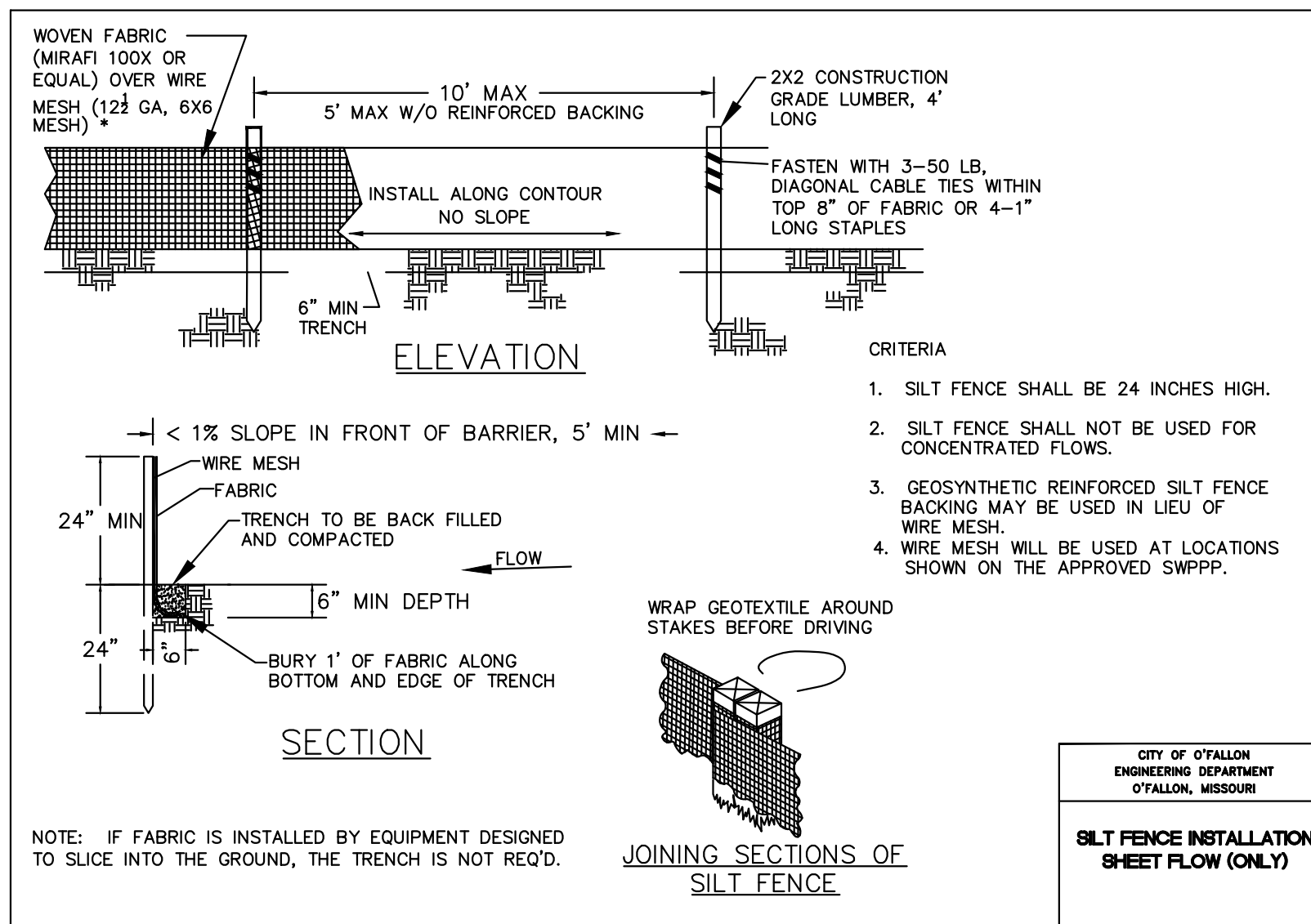
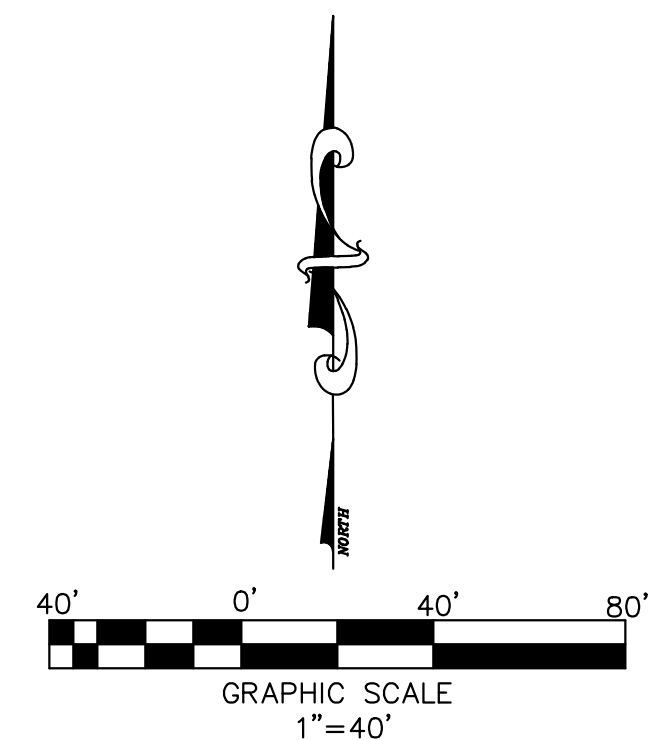
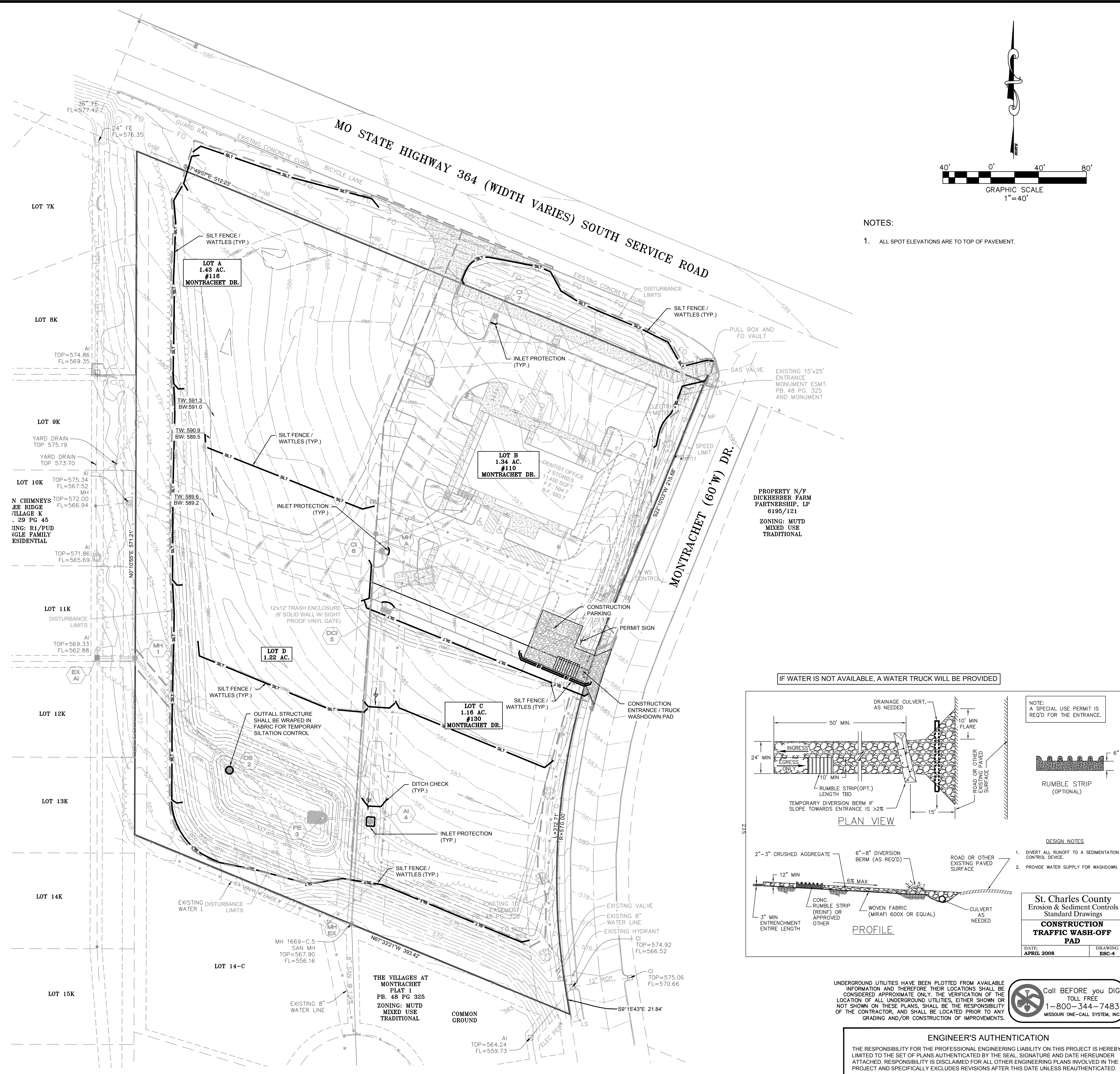


EROSION CONTROL NOTES:

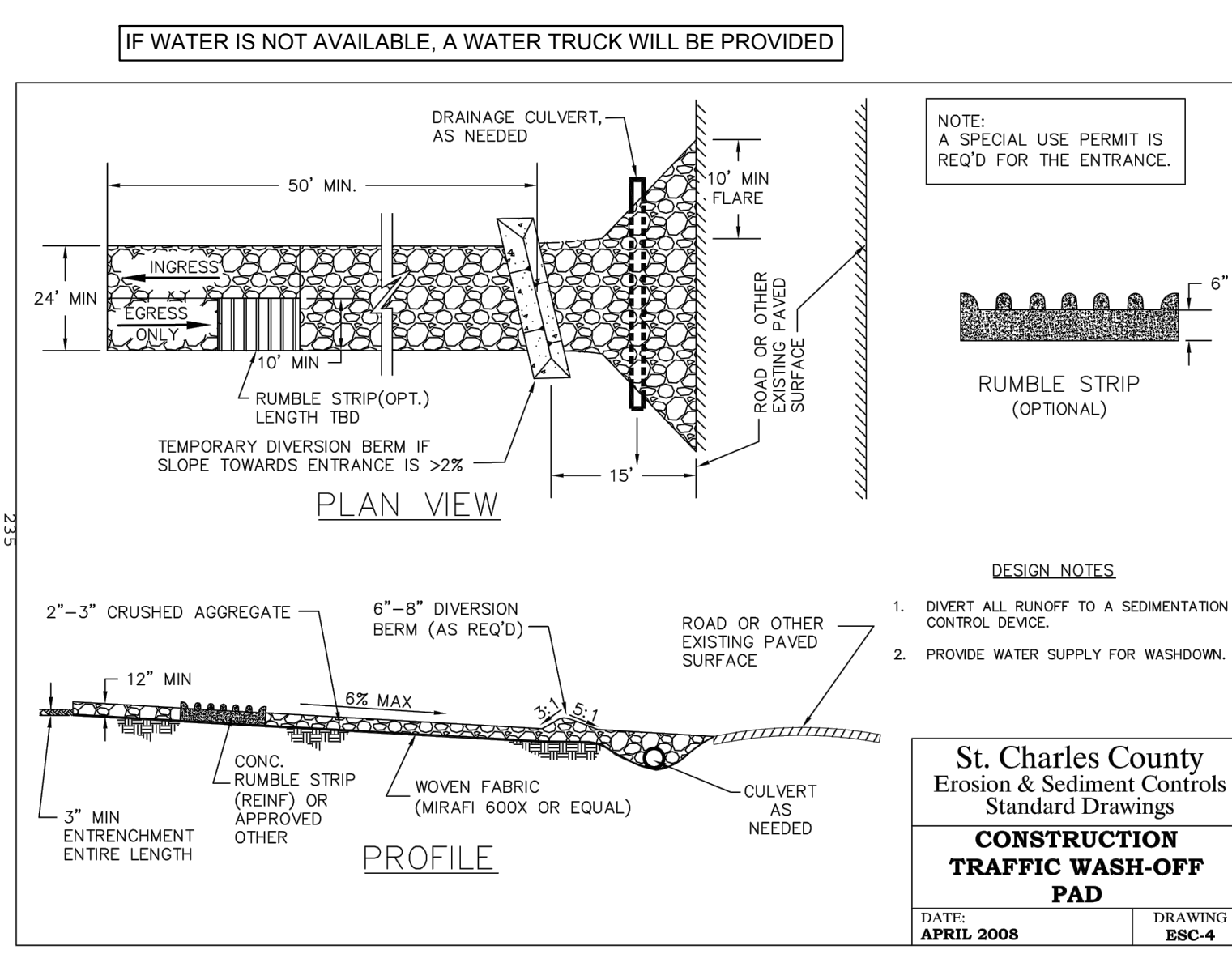
- THE PERMITTEE SHALL ASSUME COMPLETE RESPONSIBILITY FOR CONTROLLING ALL SILTATION AND EROSION OF THE PROJECT AREA. THE PERMITTEE SHALL USE WHATEVER MEANS NECESSARY TO CONTROL EROSION AND SILTATION INCLUDING, BUT NOT LIMITED TO, STAKED STRAW BALES AND/OR SILTATION FABRIC FENCES (POSSIBLE METHODS OF CONTROL ARE DETAILED IN THE PLAN). CONTROL SHALL COMMENCE WITH THE CLEARING OPERATIONS AND BE MAINTAINED THROUGHOUT THE PROJECT UNTIL ACCEPTANCE OF THE WORK BY THE CITY OF OFALLON AND AS NEEDED BY MDOOT. THE PERMITTEE'S RESPONSIBILITIES INCLUDE ALL DESIGN AND IMPLEMENTATION AS REQUIRED TO PREVENT EROSION AND THE DEPOSITING OF SILT. THE CITY OF OFALLON AND AS REQUIRED BY MDOOT MAY AT THEIR OPTION DIRECT THE PERMITTEE IN HIS METHODS AS DEEMED FIT TO PROTECT PROPERTY AND IMPROVEMENTS. ANY DEPOSITING OF SILT OR MUD ON NEW OR EXISTING PAVEMENT SHALL BE REMOVED IMMEDIATELY. ANY DEPOSITING OF SILTS OR MUD IN NEW OR EXISTING STORM SEWERS AND/OR SWALES SHALL BE REMOVED AFTER EACH RAIN AND AFFECTED AREAS CLEANED TO THE SATISFACTION OF THE CITY OF OFALLON AND AS REQUIRED BY MDOOT.
- ALL EROSION CONTROL SYSTEMS ARE TO BE INSPECTED AND CORRECTED WEEKLY, ESPECIALLY WITHIN 48 HOURS OF ANY RAIN STORM RESULTING IN ONE-QUARTER INCH OF RAIN OR MORE. ANY SILT OR DEBRIS LEAVING THE SITE AND AFFECTING PUBLIC RIGHT OF WAY OR STORM WATER DRAINAGE FACILITIES SHALL BE CLEANED UP WITHIN 24 HOURS AFTER THE END OF THE STORM.
- EROSION CONTROL DEVICES (SILT FENCE, SEDIMENT BASIN, ETC.) SHALL BE IN ACCORDANCE WITH MISSOURI DEPARTMENT OF NATURAL RESOURCES PROTECTING WATER QUALITY - A FIELD GUIDE TO EROSION, SEDIMENT AND STORMWATER BEST MANAGEMENT PRACTICES FOR DEVELOPMENT SITES IN MISSOURI AND KANSAS.
- THIS DEVELOPMENT IS REQUIRED TO PROVIDE LONG TERM POST CONSTRUCTION BMP'S SUCH AS: LOW IMPACT DESIGN, SOURCE CONTROL AND TREATMENT CONTROLS THAT PROTECTS WATER QUALITY AND CONTROLS RUN OFF TO MAXIMUM EXTENT PRACTICAL IN COMPLIANCE WITH PHASE II ILLICIT STORM WATER DISCHARGE GUIDELINES (ORD. 5082, SECTION 405.245)
- GRADED AREAS SHALL BE SEEDED AND MULCHED (STRAWED) WITHIN 14 DAYS OF STOPPING LAND DISTURBANCE ACTIVITIES. UNLESS IT CAN BE SHOWN TO THE CITY ENGINEER THAT WEATHER CONDITIONS ARE NOT FAVORABLE, VEGETATIVE GROWTH IS TO BE ESTABLISHED WITHIN 6 WEEKS OF STOPPING GRADING WORK ON THE PROJECT. THE VEGETATIVE GROWTH ESTABLISHED SHALL BE SUFFICIENT TO PREVENT EROSION AND THE STANDARD SHALL BE AS REQUIRED BY EPA AND DNR. (70% COVERAGE PER SQUARE FOOT) ORD. 6496, SECTION 405.095



l:\2024020 - montrachet dr\CAD\2024020 WORKING.dwg 08/25/25-9:32am



NOTES:
1. ALL SPOT ELEVATIONS ARE TO TOP OF PAVEMENT.



UNDERGROUND UTILITIES HAVE BEEN PLOTTED FROM AVAILABLE INFORMATION AND THEREFORE THEIR LOCATIONS SHALL BE CONSIDERED APPROXIMATE ONLY. THE VERIFICATION OF THE LOCATION OF ALL UNDERGROUND UTILITIES, EITHER SHOWN OR NOT SHOWN ON THESE PLANS, SHALL BE THE RESPONSIBILITY OF THE CONTRACTOR, AND SHALL BE LOCATED PRIOR TO ANY GRADING AND/OR CONSTRUCTION OF IMPROVEMENTS.

Call BEFORE you DIG
TOLL FREE
1-800-344-7483
MISSOURI ONE-CALL SYSTEM, INC.

ENGINEER'S AUTHENTICATION
THE RESPONSIBILITY FOR THE PROFESSIONAL ENGINEERING LIABILITY ON THIS PROJECT IS HEREBY LIMITED TO THE SET OF PLANS AUTHENTICATED BY THE SEAL, SIGNATURE AND DATE HEREUNDER ATTACHED. RESPONSIBILITY IS DISCLAIMED FOR ALL OTHER ENGINEERING PLANS INVOLVED IN THE PROJECT AND SPECIFICALLY EXCLUDES REVISIONS AFTER THIS DATE UNLESS REAUTHENTICATED.

IMPROVEMENT PLAN
THE VILLAGES AT MONTRACHET
WEST COMMERCIAL
STORMWATER POLLUTION PREVENTION PLAN

ST. CHARLES ENGINEERING & SURVEYING, INC.
801 S. FIFTH STREET, SUITE 202
ST. CHARLES, MO 63301
TEL: (636) 947-0607 FAX: (636) 947-2448

ST. CHARLES ENGINEERING AND SURVEYING, INC.
PROFESSIONAL ENGINEERING AND LAND SURVEYING CORPORATION
MISSOURI STATE CERTIFICATES OF AUTHORITY - 001647 & 000379

DATE: APRIL 2008
DRAWING: EBC-4

ORDER NO. 2024020
DATE 08/25/2025
40