

THE VILLAGES OF PHEASANT POINT

A TRACT OF LAND BEING PART OF LOT 1 OF U.S. SURVEY 1696, IN FRACTIONAL SECTION 9 & 16
TOWNSHIP 46 NORTH, RANGE 3 EAST, ST. CHARLES COUNTY, MISSOURI

VILLAGES 2 & 5

LEGEND

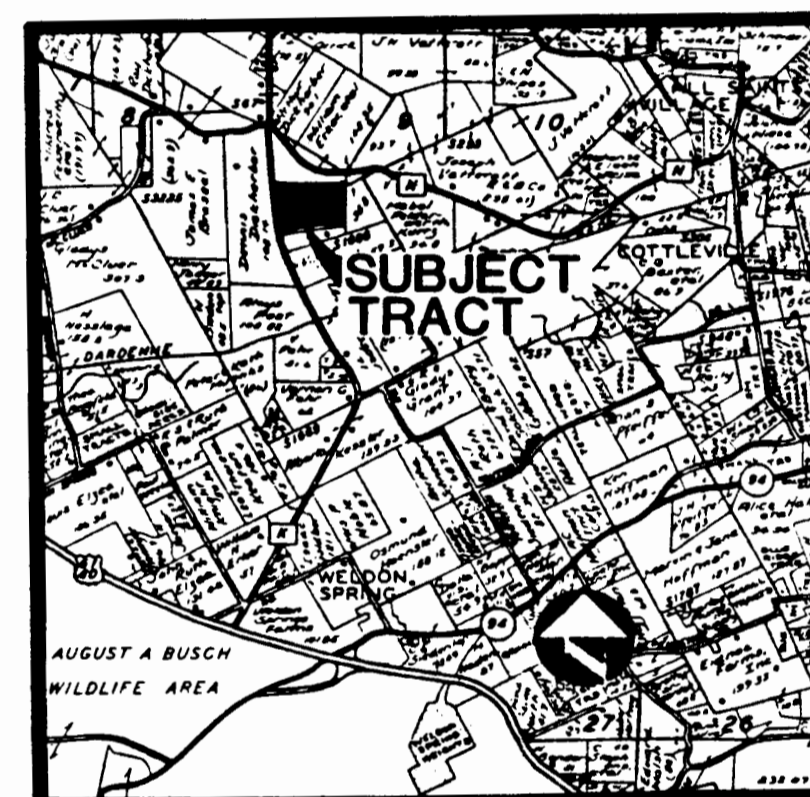
CONTOURS
MANHOLE
INLET
GRATE INLET
FLARED END SECTION
1' HIGH BERM
SODDED SWALE
STREET ADDRESSES

EXISTING

50%
500

PROPOSED

50%
500



LOCATION MAP
TOTAL AREA OF TRACT : 12.61 ACRES
64 DETACHED SINGLE FAMILY LOTS
58 ATTACHED SINGLE FAMILY LOTS
TYPICAL LOT 4,225 SQ. FT.

INDEX OF SHEETS

- 1 TITLE SHEET
- 2-3 ROUGH GRADING PLAN
- 4-5 SITE & GRADING PLAN
- 6-7 STREET PROFILES
- 8-9 SANITARY SEWER PROFILES
- 10 STORM SEWER PROFILES
- 11 SEWER DETAILS
- 12 PAVEMENT DETAILS
- 13-14 DRAINAGE AREA MAPS

APPROVED

GEORGE BUTLEY ASSOCIATES, INC.
SUITE 4 - 11 EAST 65th ST.
OFALLON, MISSOURI 63366



RECEIVED OCT 03 1985

MRH

BENCHMARK

ELEVATION 487.55 (NGVD)

CHISELED SQUARE ON NORTHWEST WINGWALL OF STATE
HIGHWAY K BRIDGE NO. L-15 OVER DARDENNE CREEK.

PREPARED FOR:
FLOWER HOMES, INC.
CLARKSON EXECUTIVE CENTER
SUITE 164
ELLISVILLE, MISSOURI 63011
(314) 391-9333

THE VILLAGES OF PHEASANT POINT

TITLE SHEET

Fox & Cole

CONSULTING ENGINEERS

Drawn By <i>KEN</i>	Checked By <i>MARK</i>	Project Number <i>84-006</i>	Sheet Number <i>1 OF 14</i>
Date <i>6-24-85</i>	Revisions <i>8-15-85 8-21-85 9-3-85 9-27-85</i>		