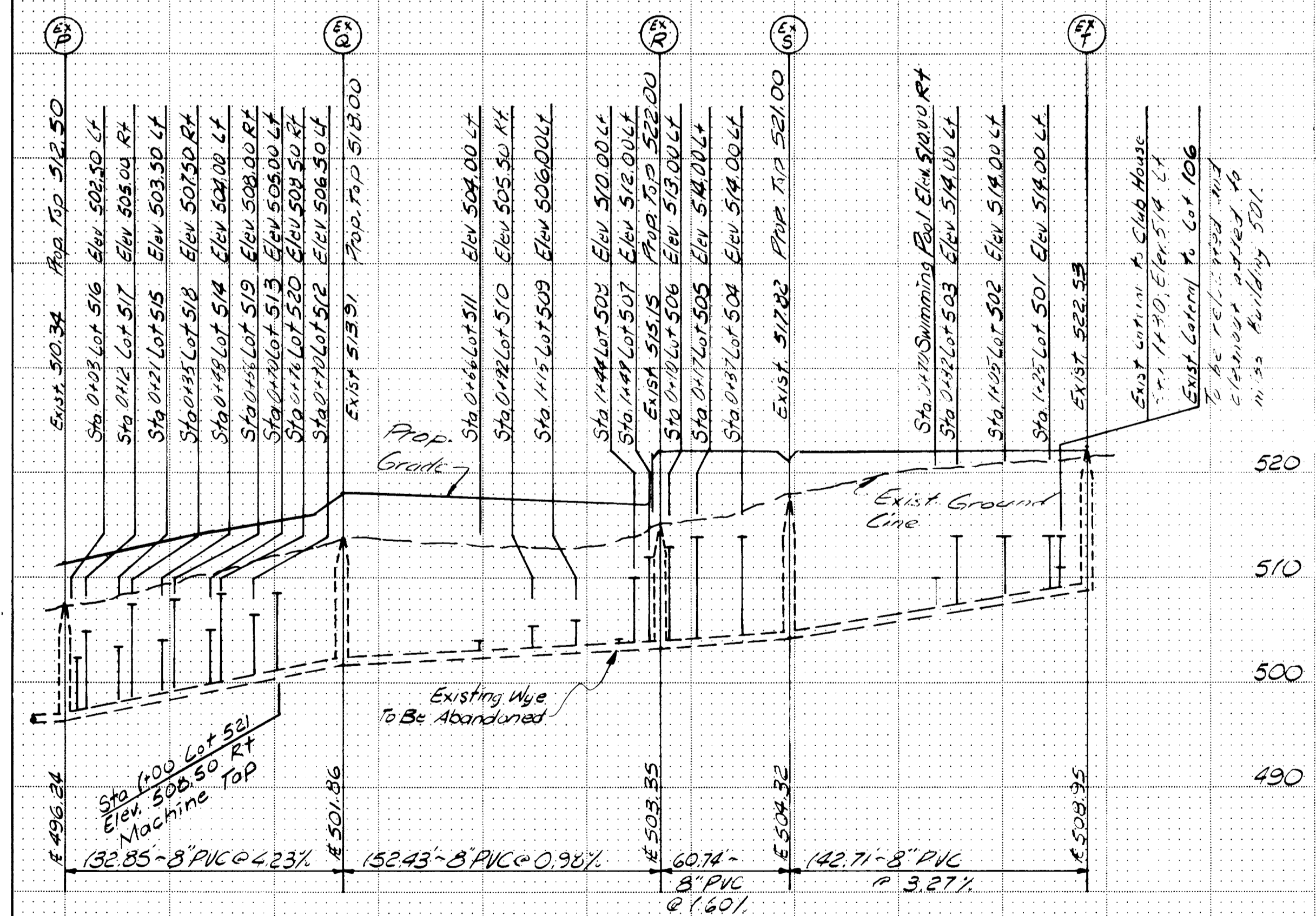
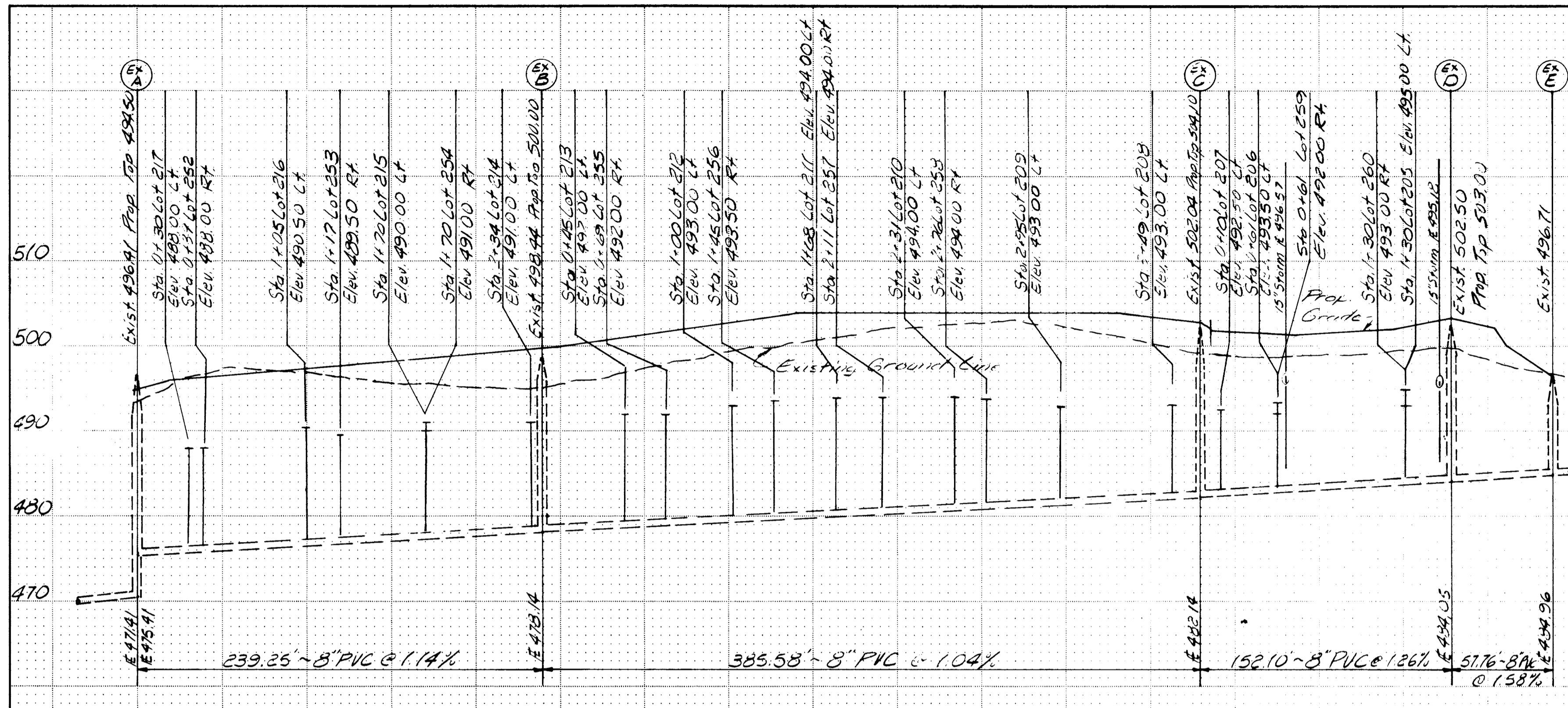


FINAL SURVEY	DATE
SURVEYED	BY
PLOTTED	
NOTE BOOK	
AREAS CHECKED	
NO.	

ORIGINAL SURVEY	DATE
SURVEYED	BY
PLOTTED	
NOTE BOOK	
AREAS CHECKED	
NO.	



- NOTES:
1. ALL SEWERS SHOWN ON THIS SHEET ARE EXISTING. ALL WYES SHOWN ON LINE A-F ARE TO BE ADDED AS WELL THE WYE FOR LOT 521 ON LINE P-Q. EXCEPT FOR LOT 521, ALL WYES SHOWN ON LINE P-T ARE EXISTING. THE INDICATED WYE ON LINE Q-R IS TO BE ABANDONED.
 2. EXISTING MANHOLE TOPS TO BE ADJUSTED TO GRADE PER TOPS SHOWN OR ADJUSTED TO GRADE AFTER THE FINAL GRADING OPERATIONS IN THE AREA OF THE MANHOLES HAVE BEEN COMPLETED.
 3. EXISTING INFORMATION SHOWN IS FROM "AS-BUILT" DRAWINGS PREPARED IN DECEMBER 1984 BY FOX & COLE.
 4. EXISTING WYES PER "AS-BUILT" LOCATION BY FURLER CANNON SCHULTE, INC.

Scale: 1"=10' Vert.
1"=50' Horiz.

NOTICE TO CONTRACTOR:
 UTILITIES HAVE BEEN LOCATED BY THE ENGINEER FROM AVAILABLE RECORDS. THEIR LOCATIONS SHOULD BE CONSIDERED APPROXIMATE. THE CONTRACTOR HAS THE RESPONSIBILITY TO NOTIFY ALL UTILITY COMPANIES, A MINIMUM OF 48 HOURS (2 WORKING DAYS), PRIOR TO CONSTRUCTION TO HAVE EXISTING UTILITIES FIELD LOCATED.

THE VILLAGES OF PHEASANT POINT
 SANITARY SEWER PROFILES

Fox & Cole
 Consulting Engineers

3000 Cedar Plaza Parkway • Suite 300 • St. Louis, MO 63113

Drawn By VLB	Checked By MAK	Project Number 84-006	Sheet Number 9 of 14
Date 4-29-85		Revisions 8-21-85 (rs. cl. Loh 208-212) 9-3-85	