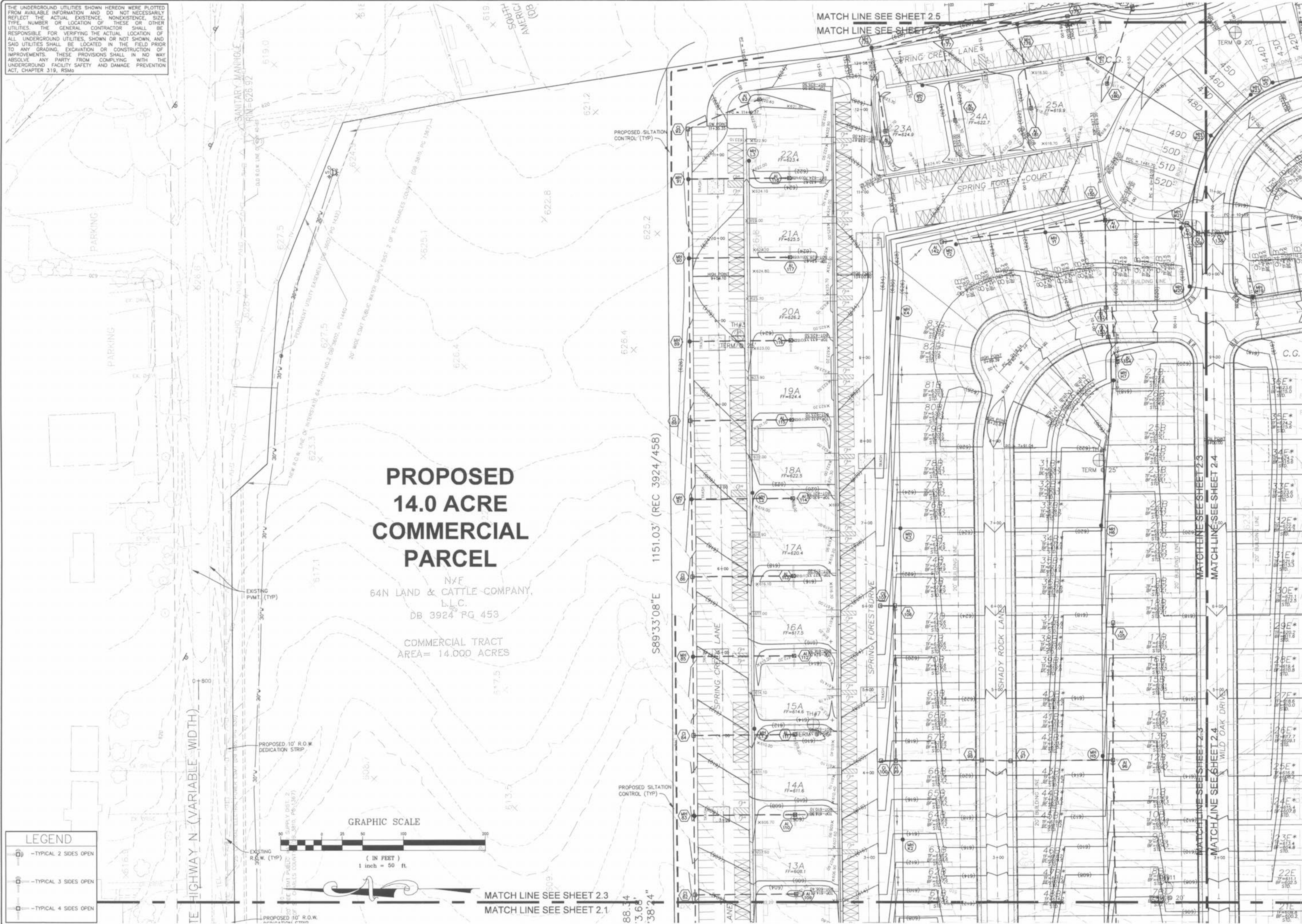
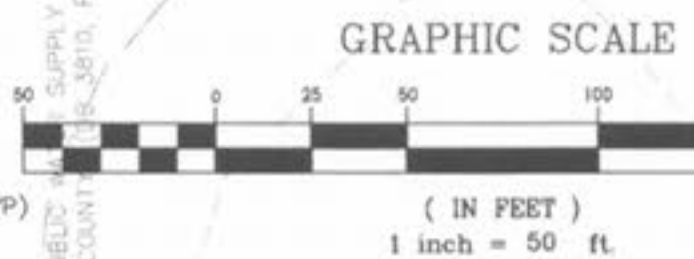


THE UNDERGROUND UTILITIES SHOWN HEREON WERE PLOTTED FROM AVAILABLE INFORMATION AND DO NOT NECESSARILY REFLECT THE ACTUAL EXISTENCE, NONEXISTENCE, SIZE, TYPE, NUMBER OR LOCATION OF THESE OR OTHER UTILITIES. THE GENERAL CONTRACTOR SHALL BE RESPONSIBLE FOR VERIFYING THE ACTUAL LOCATION OF ALL UNDERGROUND UTILITIES, SHOWN OR NOT SHOWN, AND SAID UTILITIES SHALL BE LOCATED IN THE FIELD PRIOR TO ANY GRADING, EXCAVATION OR CONSTRUCTION OF IMPROVEMENTS. THESE PROVISIONS SHALL IN NO WAY ABSOLVE ANY PARTY FROM COMPLYING WITH THE UNDERGROUND FACILITY SAFETY AND DAMAGE PREVENTION ACT, CHAPTER 319, RSMo



**PROPOSED  
14.0 ACRE  
COMMERCIAL  
PARCEL**

NXF  
64N LAND & CATTLE COMPANY,  
L.L.C.  
DB 3924 PG 453  
COMMERCIAL TRACT  
AREA= 14.000 ACRES



**LEGEND**

- TYPICAL 2 SIDES OPEN
- TYPICAL 3 SIDES OPEN
- TYPICAL 4 SIDES OPEN

**ISSUE REMARKS/DATE**

1	03-02-05	FIRST SUBMITTAL
2	04-04-05	REVISED PER DCSO COMMENTS
3	05-23-05	REVISED PER CITY OF FALLON COMMENTS
4	05-27-05	REVISED PER DCSO COMMENTS
5	06-06-05	REVISED PER PASO #0 COMMENTS
6	06-27-05	REVISED PER CITY OF FALLON COMMENTS
7	07-14-05	REVISED PER PASO#02 COMMENTS
8	08-08-05	REVISED PER CITY OF FALLON COMMENTS

PREPARED FOR:  
**SPRINGHURST, L.L.C.**  
5091 NEW BAUMGARTNER ROAD  
ST. LOUIS, MISSOURI 63129  
(314) 487-6717



THE **STERLING** CO.  
ENGINEERS & SURVEYORS  
5055 NEW BAUMGARTNER ROAD  
ST. LOUIS, MISSOURI 63129  
(314) 487-0440 FAX 487-8944  
E-Mail: Sterling@sterling-eng-srv.com

PROJECT: **THE VILLAGES AT SPRINGHURST**

NO. **03 12 269**  
M.S.D. SHEET  
P# **2.3**  
SHEET TITLE: **GRADING PLAN**

DRAWN: [Signature]  
DESIGNED: [Signature]  
CHECKED: [Signature]

Drawing no. 631032269 SpringhurstImprovements269mp.dwg Plotted on Aug. 06, 2005 10:30am Plotted by: jbutcherous

BASE MAP

PC#2804