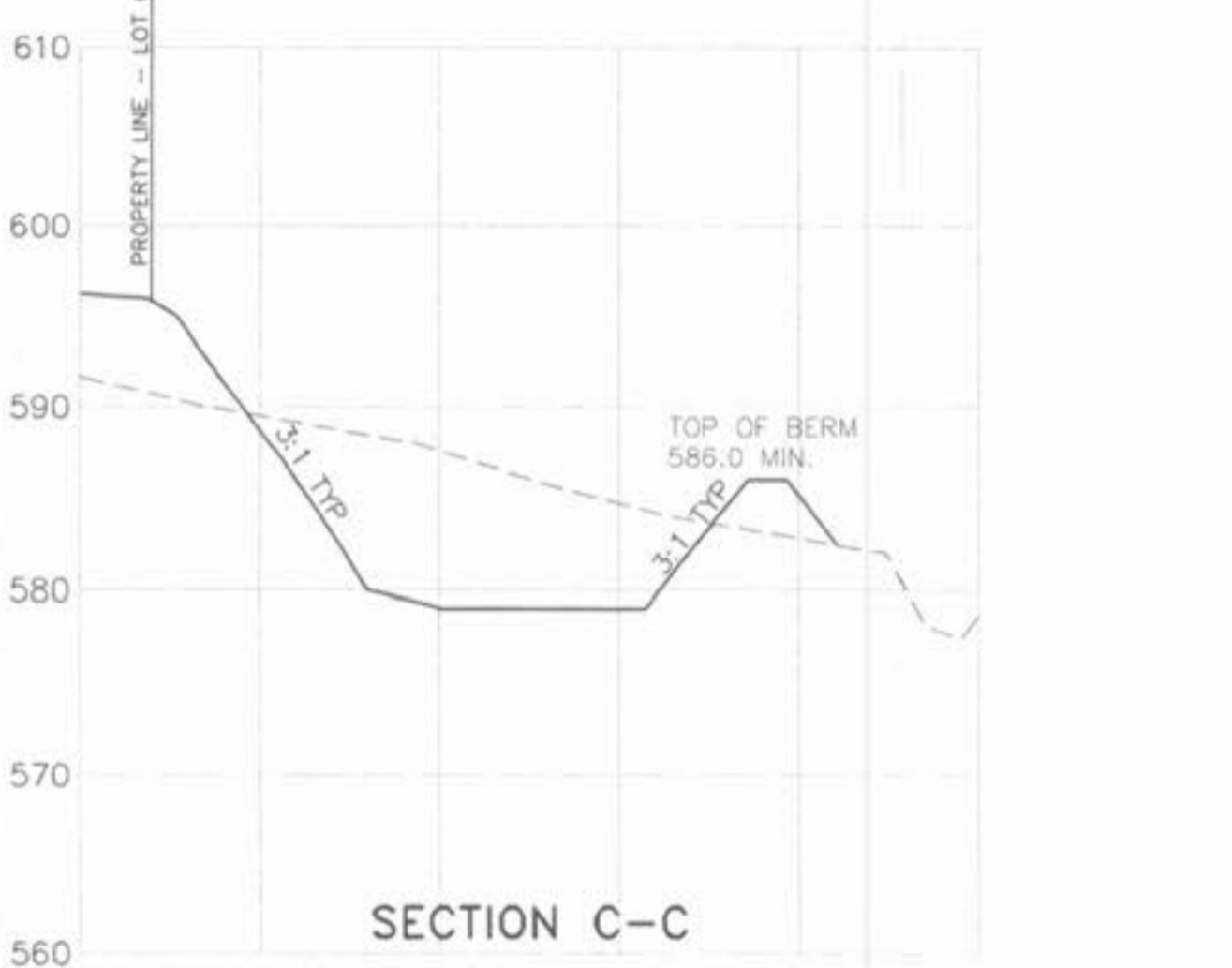
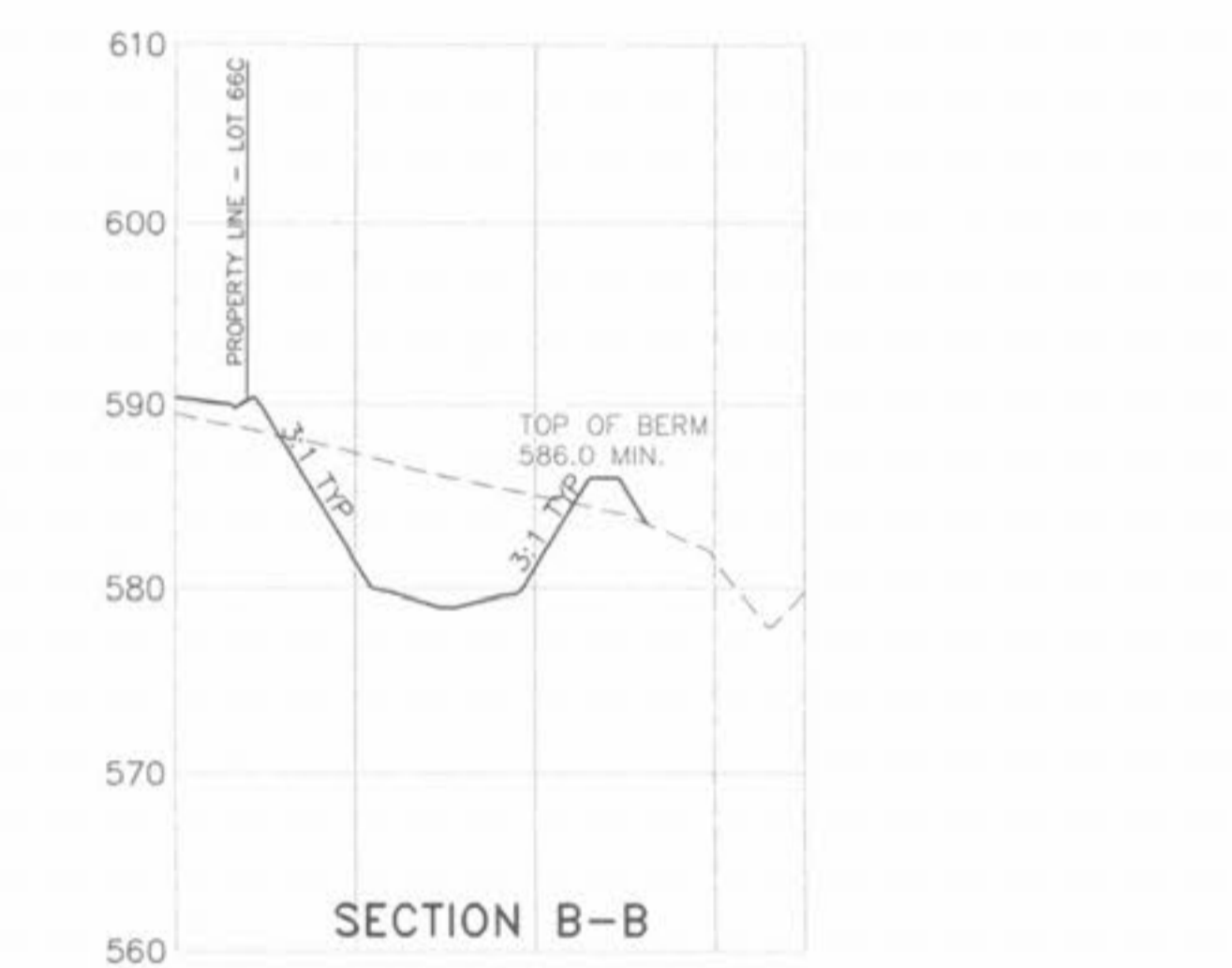
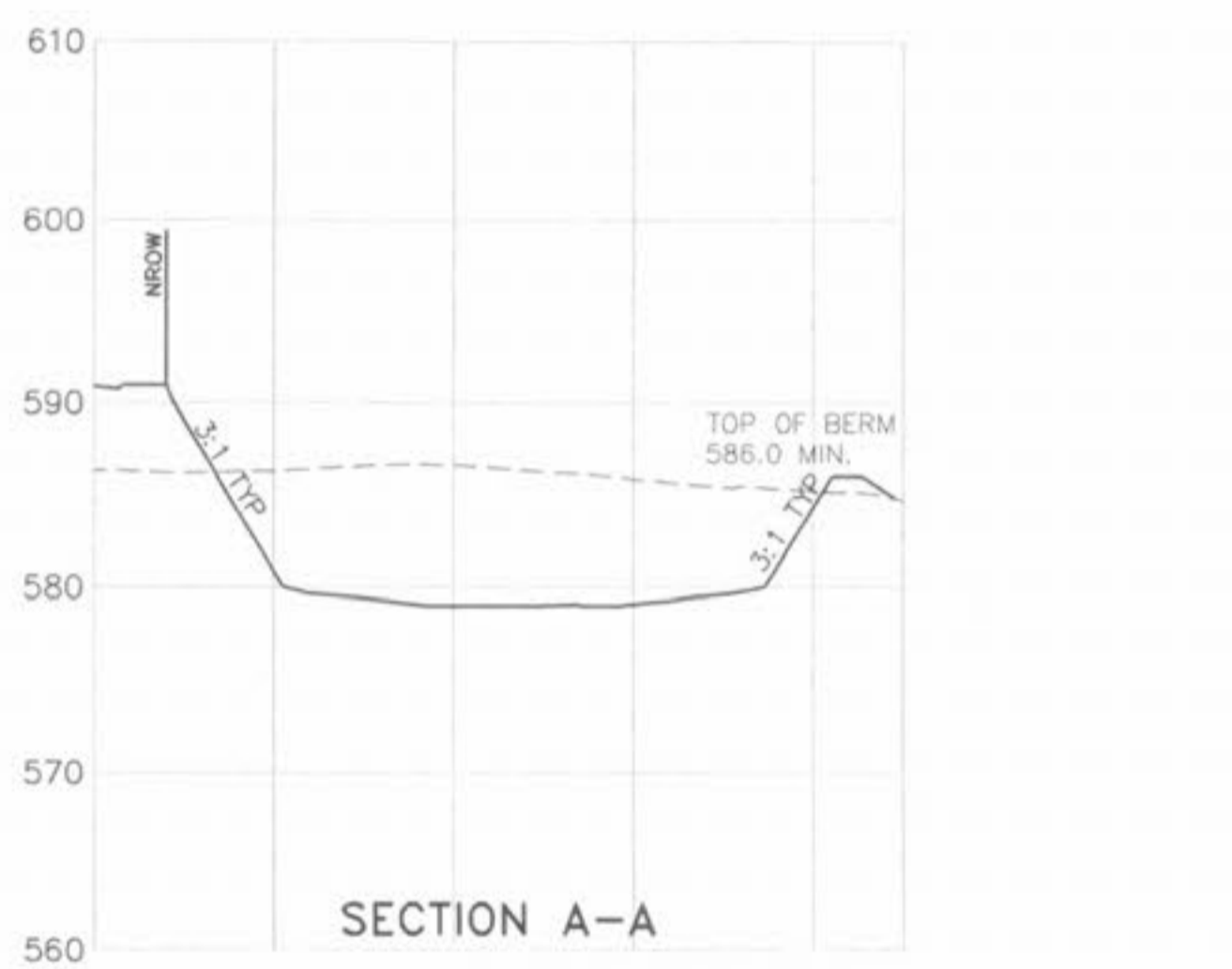
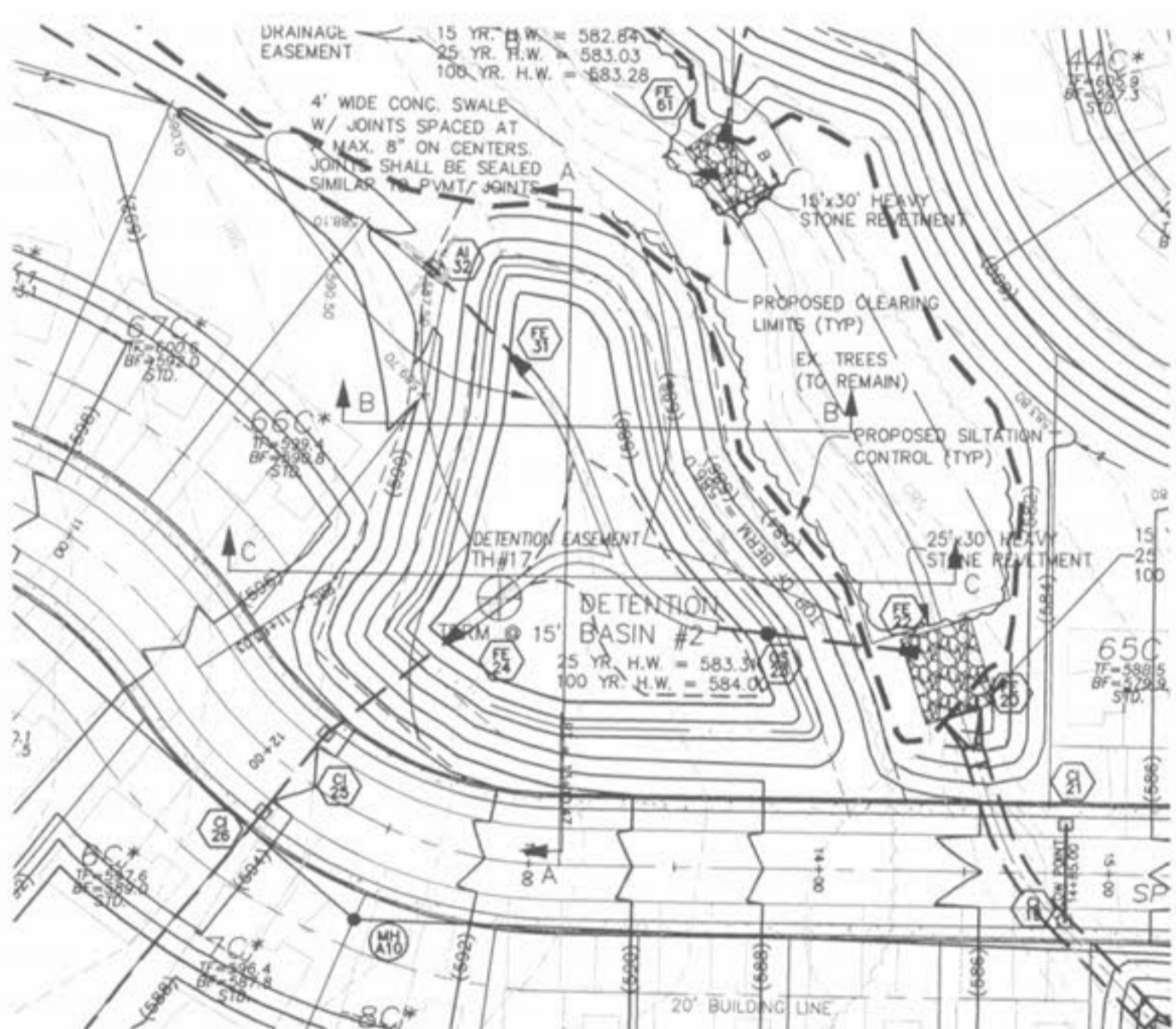
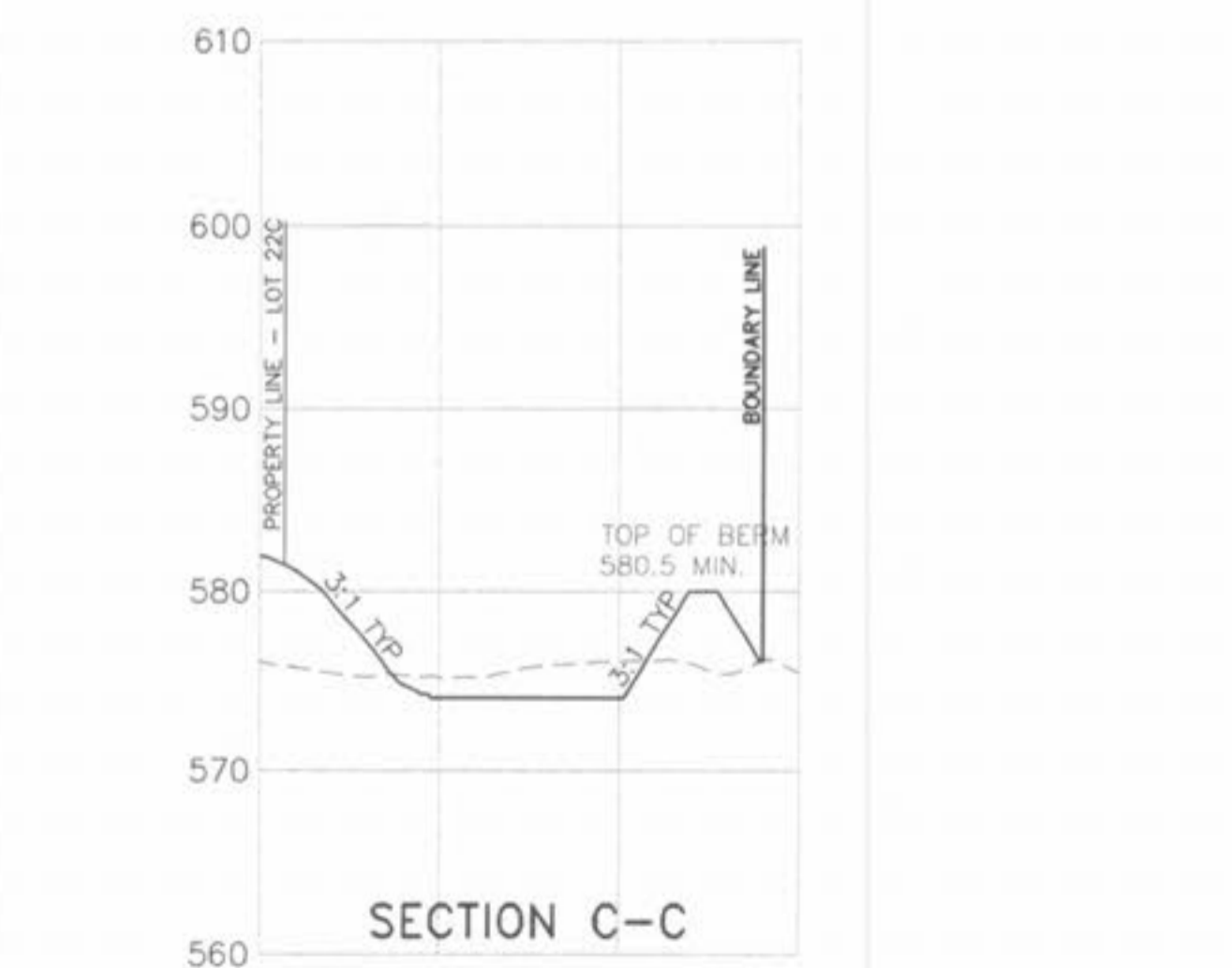
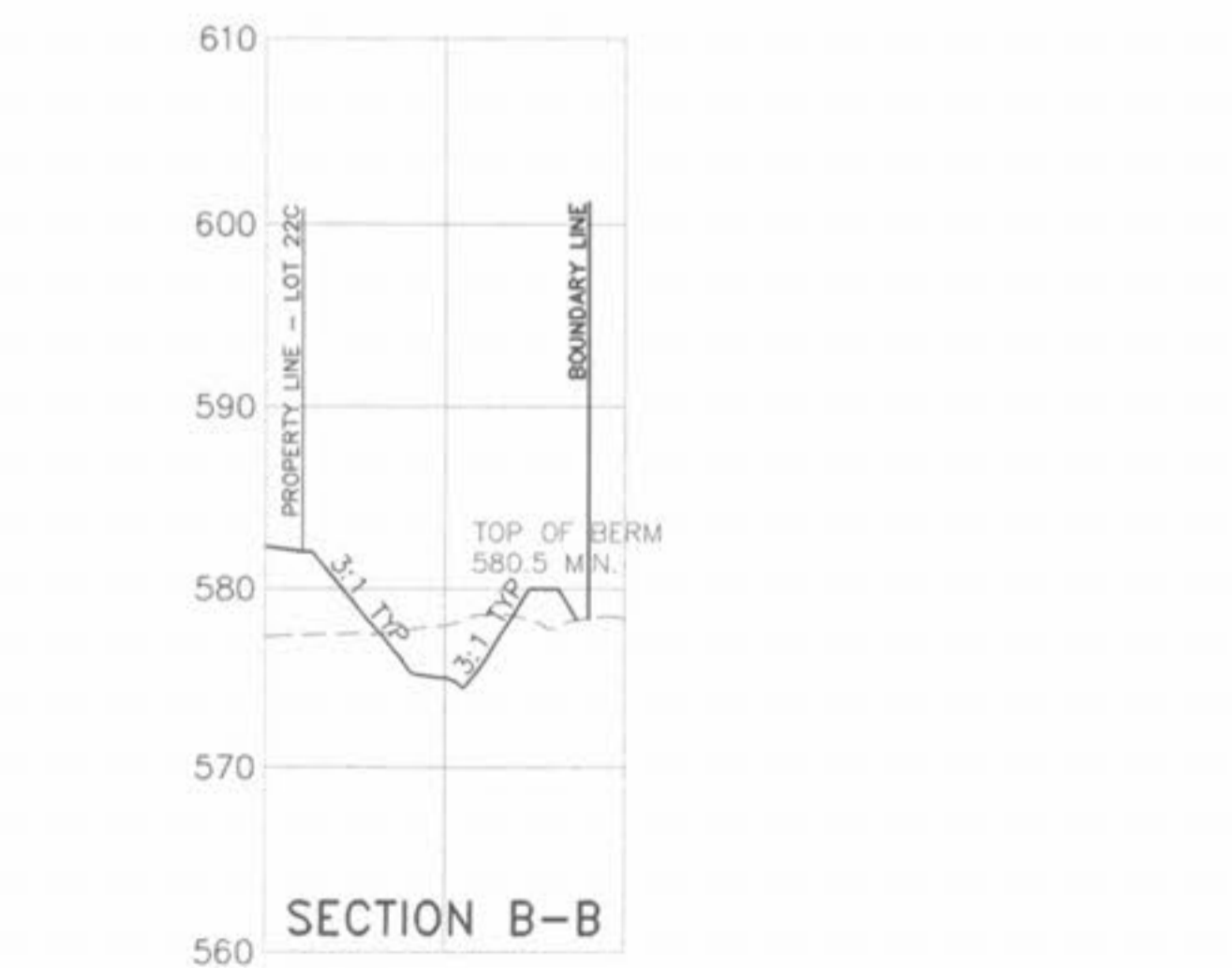
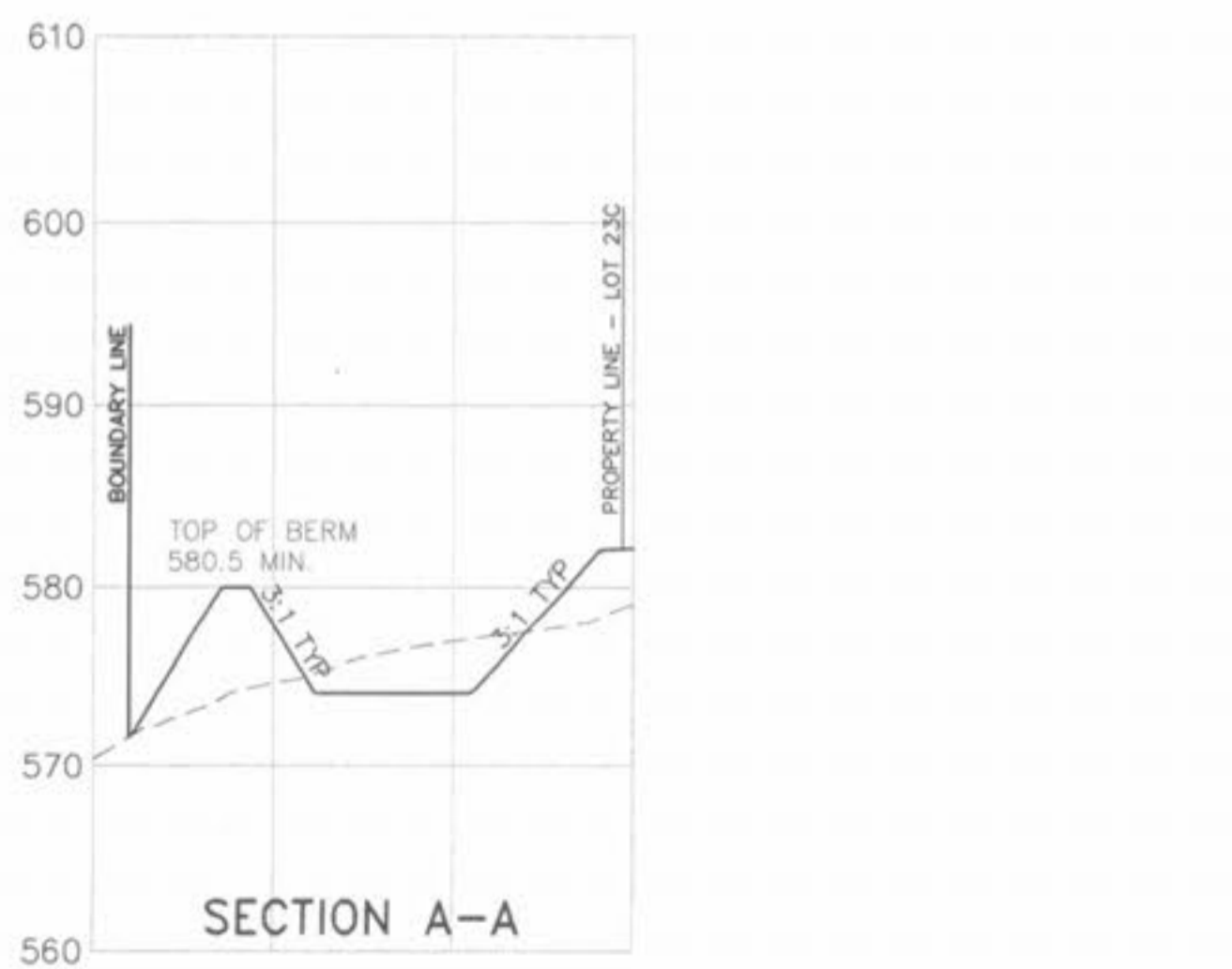
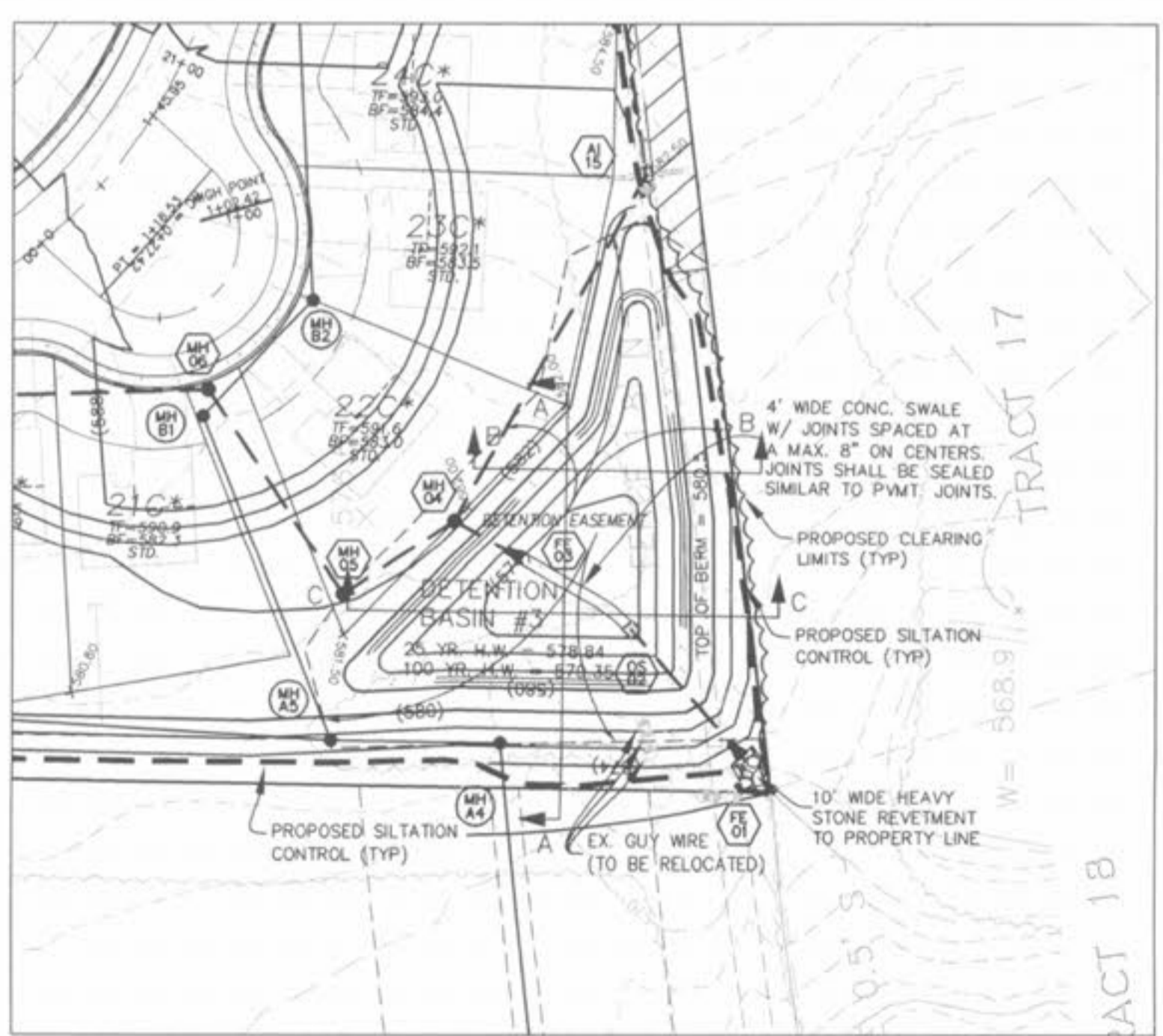


DETENTION BASIN #1  
 SCALE:  
 1" = 50' HOR.  
 1" = 10' VER.



DETENTION BASIN #2  
 SCALE:  
 1" = 50' HOR.  
 1" = 10' VER.



DETENTION BASIN #3  
 SCALE:  
 1" = 50' HOR.  
 1" = 10' VER.

ISSUE	REMARKS/DATE
1	03-02-05 FIRST SUBMITTAL
2	04-04-05 REVISED PER DCSO COMMENTS
3	05-23-05 REVISED PER CITY OF OFFALLON COMMENTS
4	05-27-05 REVISED PER DCSO COMMENTS
5	06-09-05 REVISED PER PWS#12 COMMENTS
6	06-27-05 REVISED PER CITY OF OFFALLON COMMENTS
7	07-14-05 REVISED PER PWS#2 COMMENTS
8	08-08-05 REVISED PER CITY OF OFFALLON COMMENTS

PREPARED FOR:  
**SPRINGHURST, L.L.C.**  
 5091 NEW BAUMGARTNER ROAD  
 ST. LOUIS, MISSOURI 63129  
 (314) 487-6717

THE **STERLING** CO.  
 ENGINEERS & SURVEYORS  
 5055 NEW BAUMGARTNER ROAD  
 ST. LOUIS, MISSOURI 63129  
 (314) 487-0440 FAX 487-6944  
 E-Mail: Sterling@sterling-eng-srv.com

8/18/2005

PROJECT: **THE VILLAGES AT SPRINGHURST**

DRAWN: \_\_\_\_\_ DESIGNED: \_\_\_\_\_ CHECKED: \_\_\_\_\_

SHEET TITLE: **BASIN SECTION**

NO. **03 12 269**

M.S.D. SHEET

P# **11.1**

DIGITAL FILE LOCATION: SERVER=STERLING-2

PC#2804

Drawing no.: K:\D\03269\_Springhurst\Improvements\269\DWG\_Plot.dwg Plotted on: Aug 06, 2005 - 9:49am Plotted by: jurlinkhaus