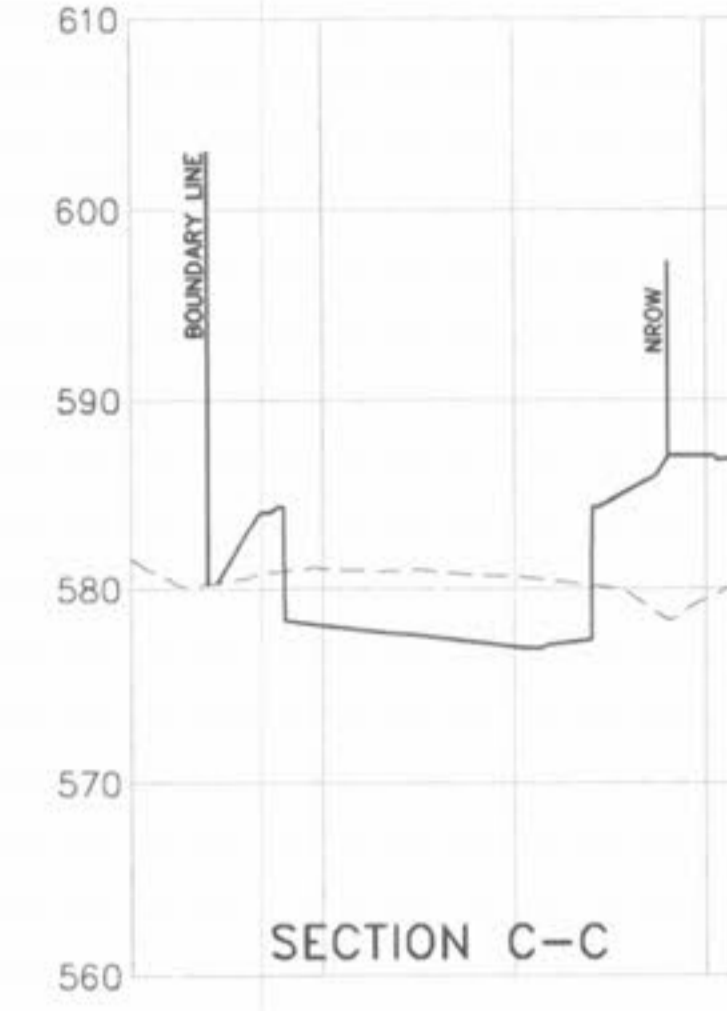
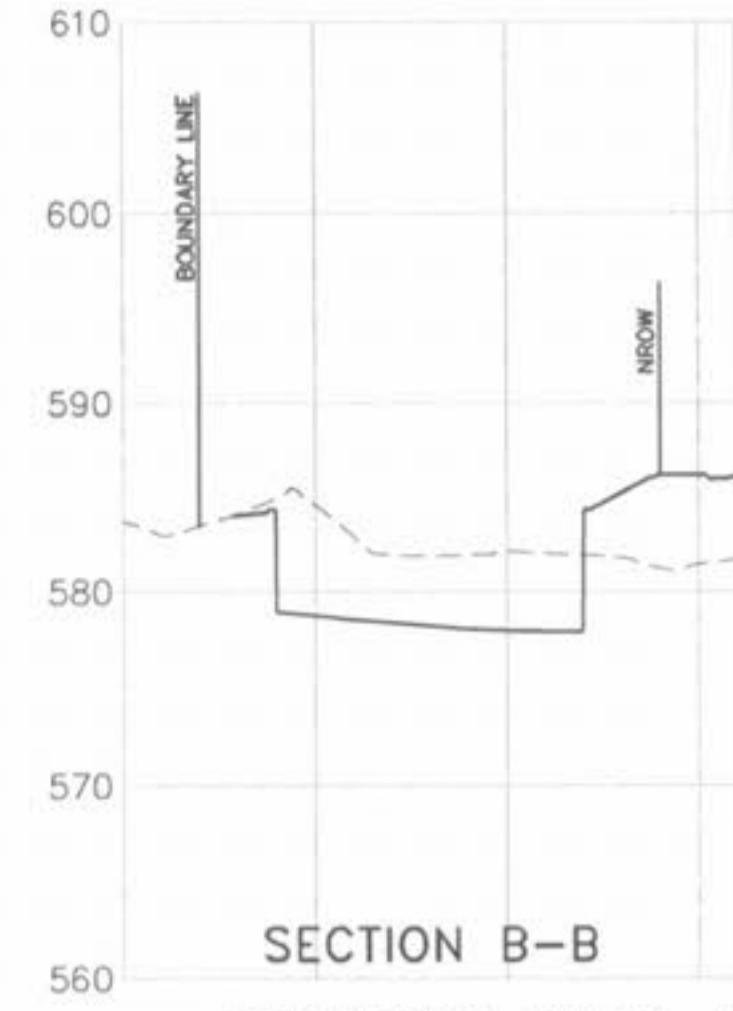
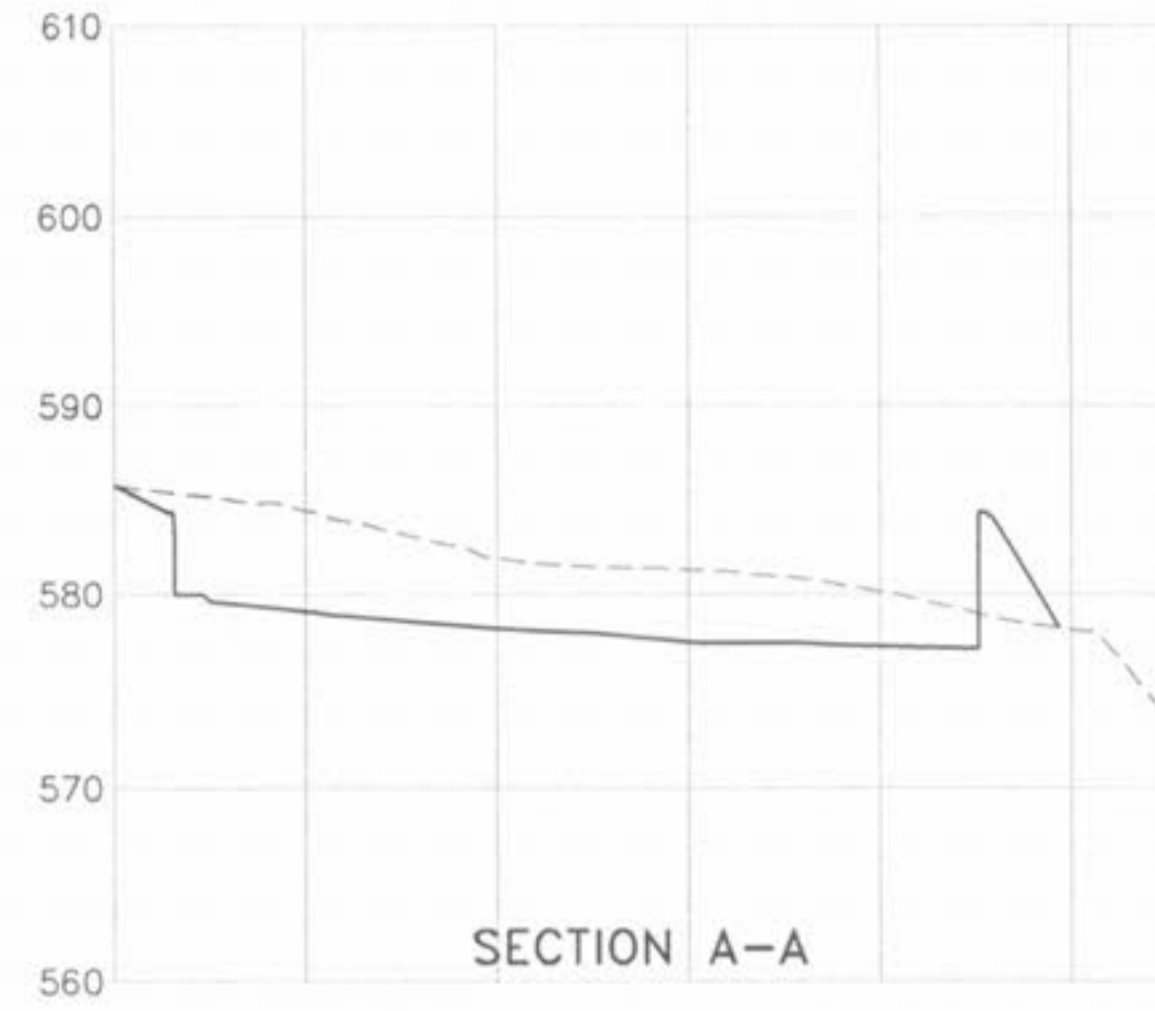
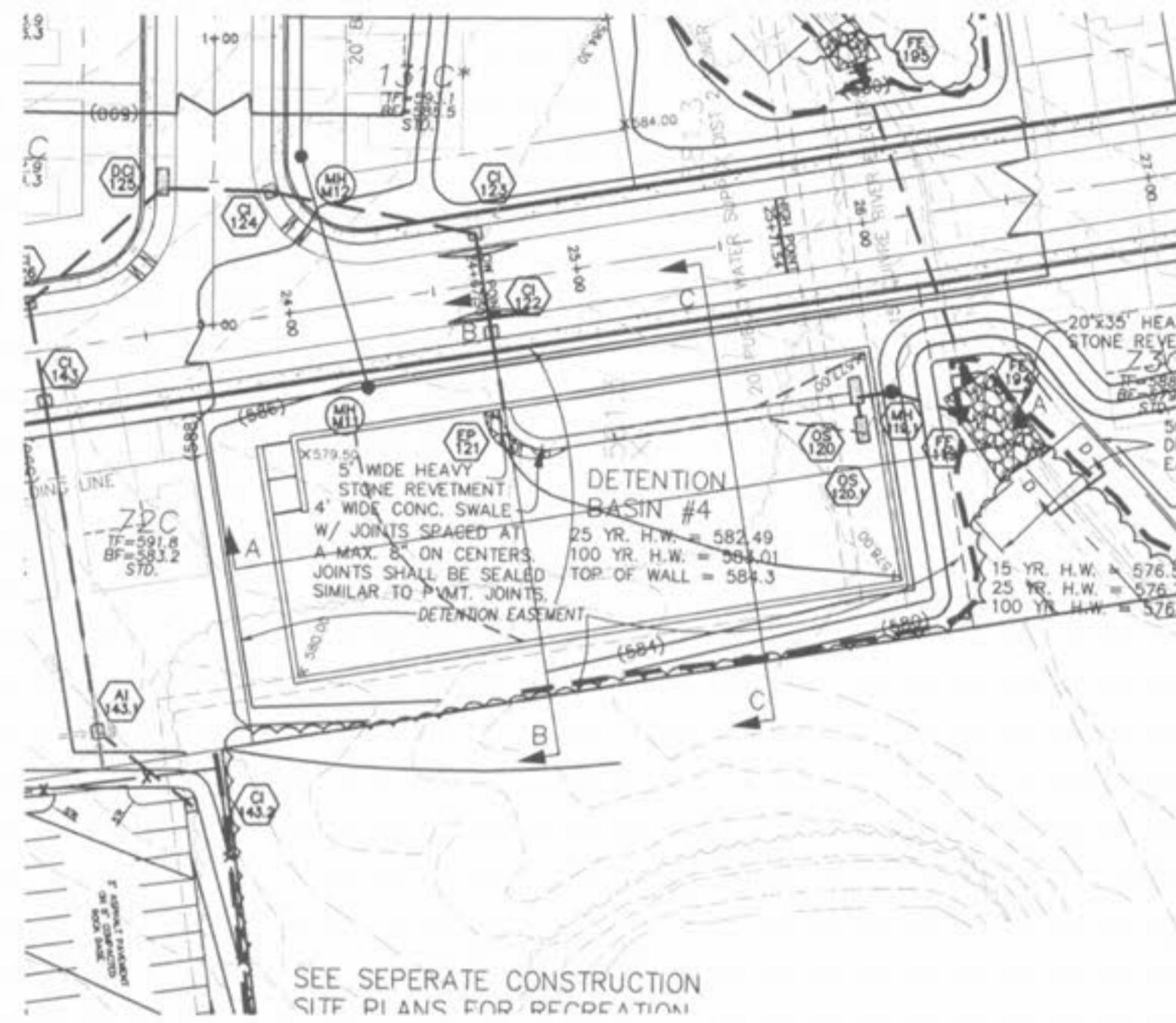
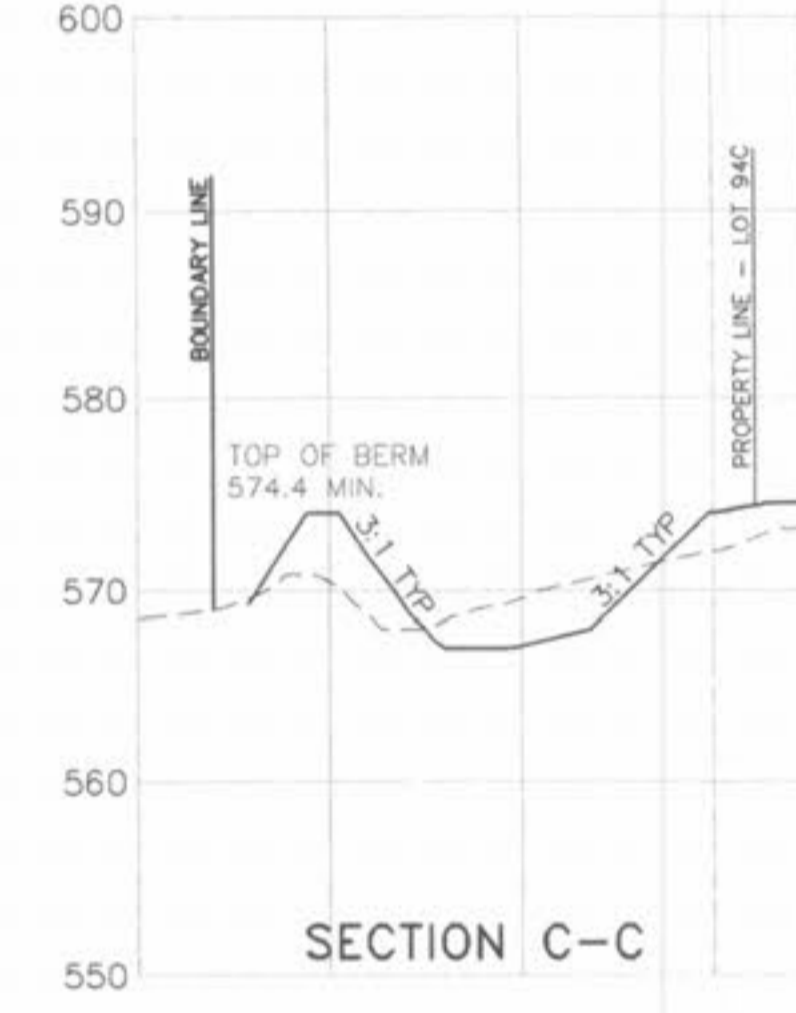
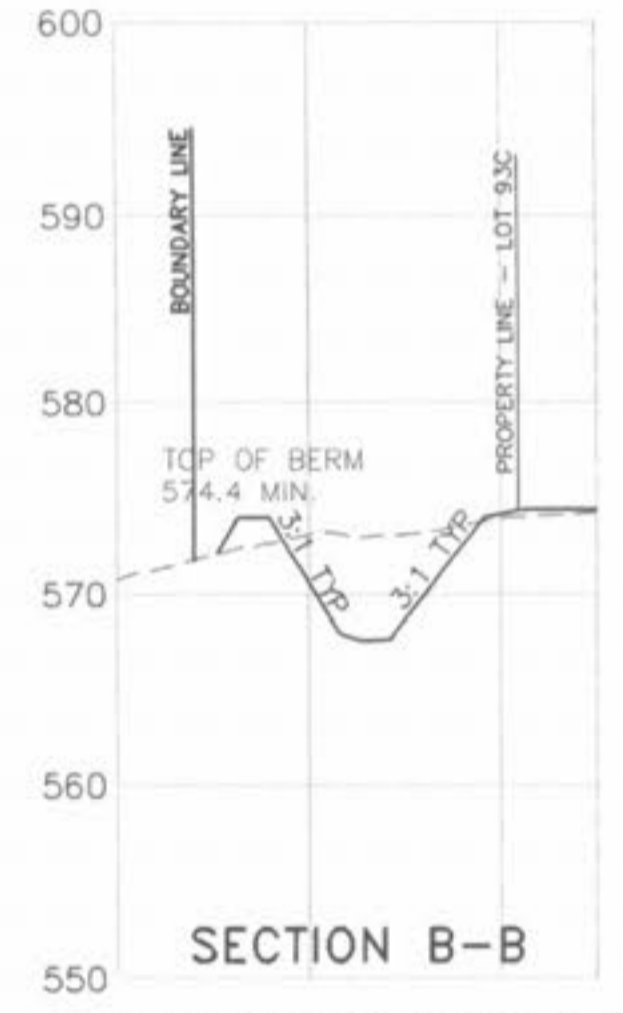
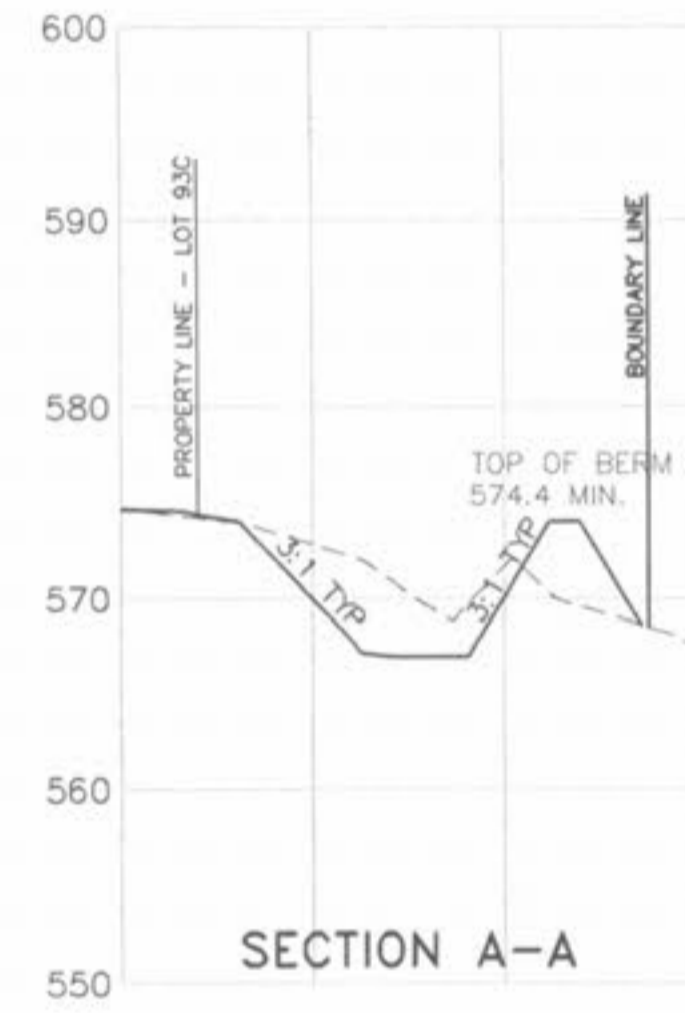
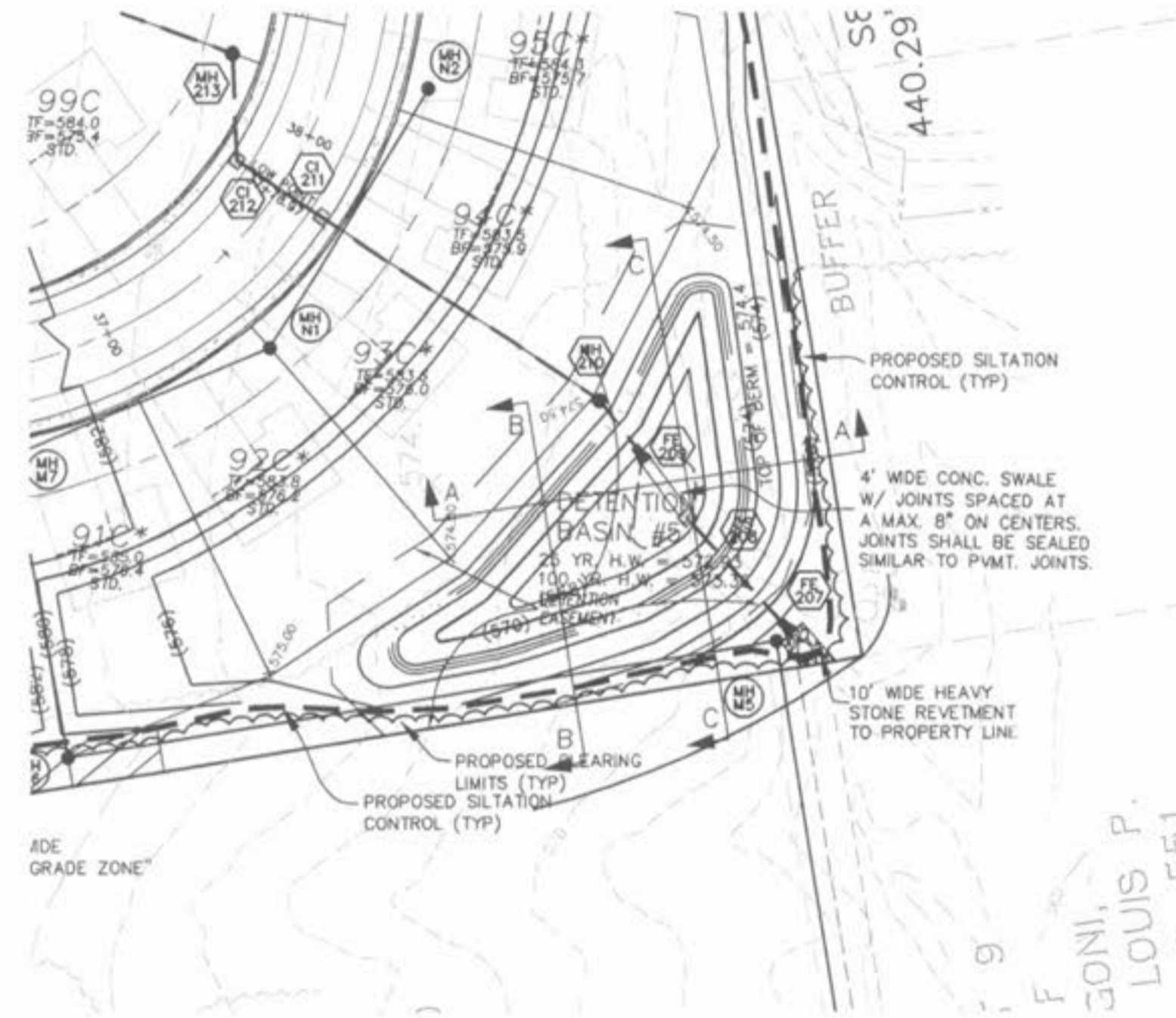


Drawing name: K:\D\28289\_Springhurst\Improvements\28289P03.dwg Plotted on: Aug 06, 2003 - 9:48am Plotted by: jurbornhaus



**DETENTION BASIN #4**  
SCALE:  
1" = 50' HOR.  
1" = 10' VER.



**DETENTION BASIN #5**  
SCALE:  
1" = 50' HOR.  
1" = 10' VER.

ISSUE	REMARKS/DATE
1	03-02-05 FIRST SUBMITTAL
2	04-04-05 REVISED PER DCSD COMMENTS
3	05-23-05 REVISED PER CITY OF FALLON COMMENTS
4	05-27-05 REVISED PER DCSD COMMENTS
5	06-09-05 REVISED PER PWS&D #2 COMMENTS
6	06-27-05 REVISED PER CITY OF FALLON COMMENTS
7	07-14-05 REVISED PER PWS&D #2 COMMENTS
8	08-08-05 REVISED PER CITY OF FALLON COMMENTS

PREPARED FOR:  
**SPRINGHURST, L.L.C.**  
5091 NEW BAUMGARTNER ROAD  
ST. LOUIS, MISSOURI 63129  
(314) 487-6717



PREPARED BY:  
**THE STERLING CO.**  
ENGINEERS & SURVEYORS  
5055 NEW BAUMGARTNER ROAD  
ST. LOUIS, MISSOURI 63129  
(314) 487-0440 FAX 487-8844  
E-Mail: Sterling@sterling-eng-sur.com

DRAWN: [Blank]  
DESIGNED: [Blank]  
CHECKED: [Blank]

PROJECT:  
**THE VILLAGES AT SPRINGHURST**

SHEET TITLE:  
BASIN SECTION

NO	03	12	269
M.S.D.			SHEET
P#			112
DIGITAL FILE LOCATION	DRAWING - STERLING-2		
DATE	11/08/07.dwg		
OF			-