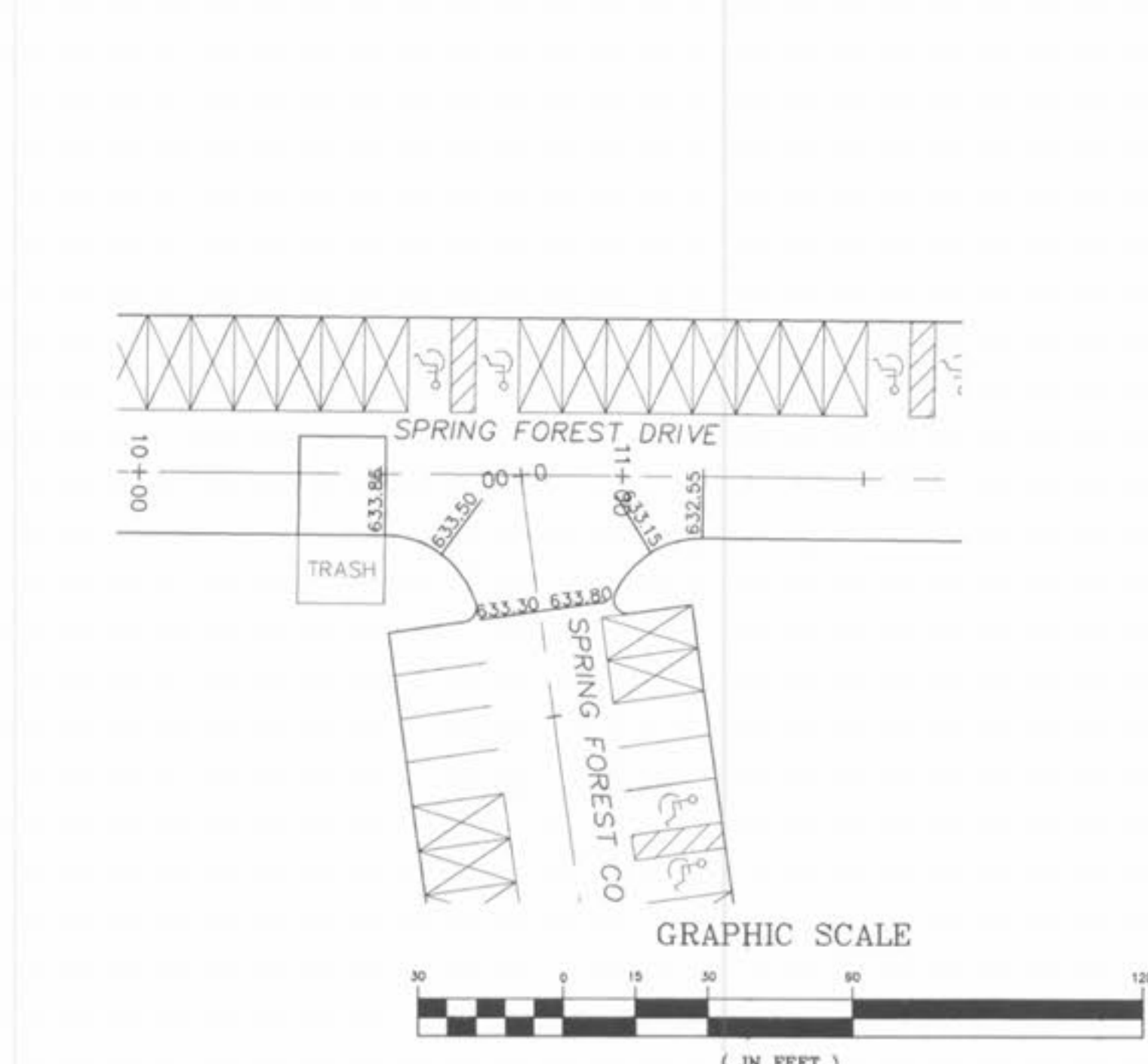
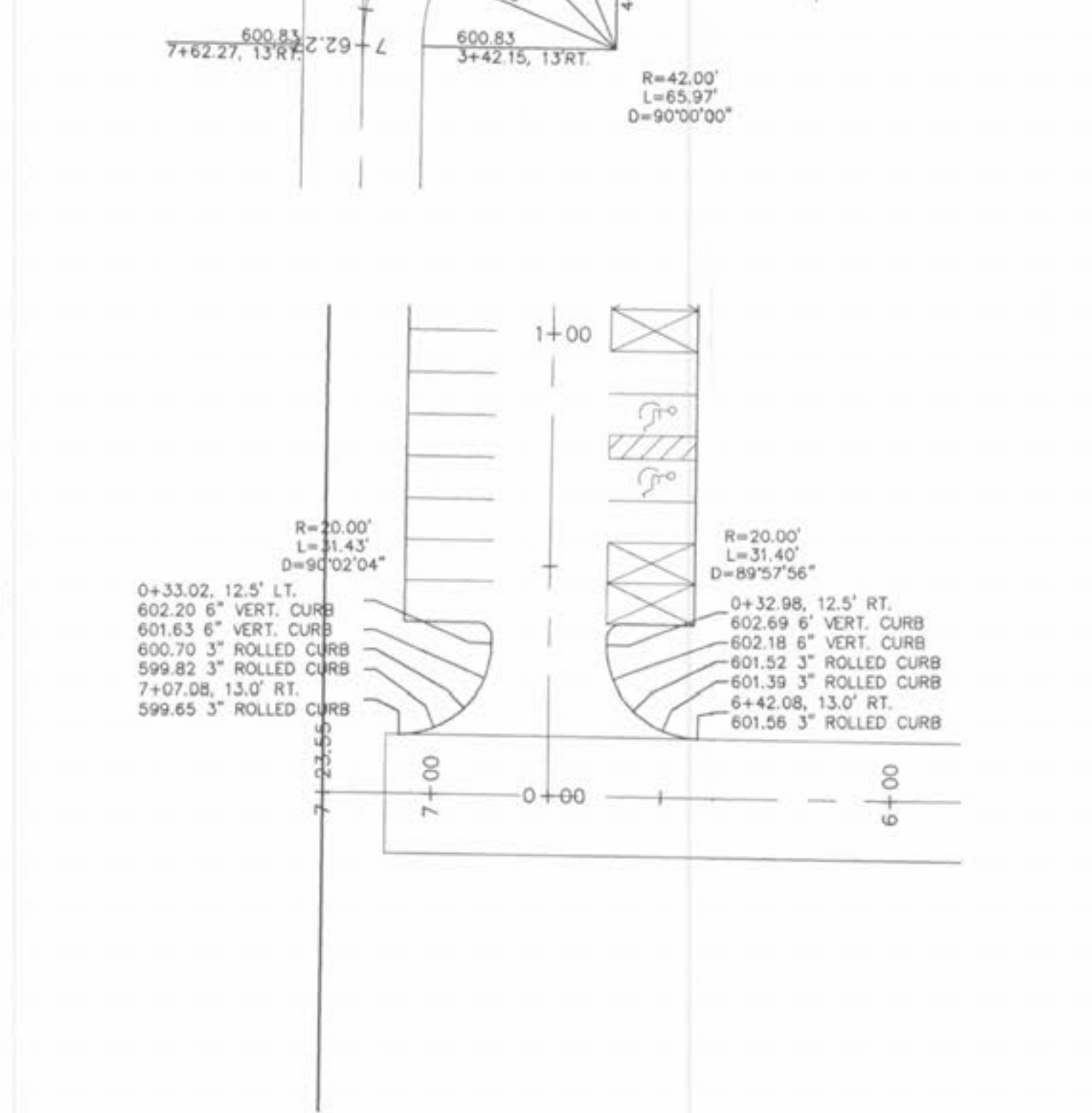
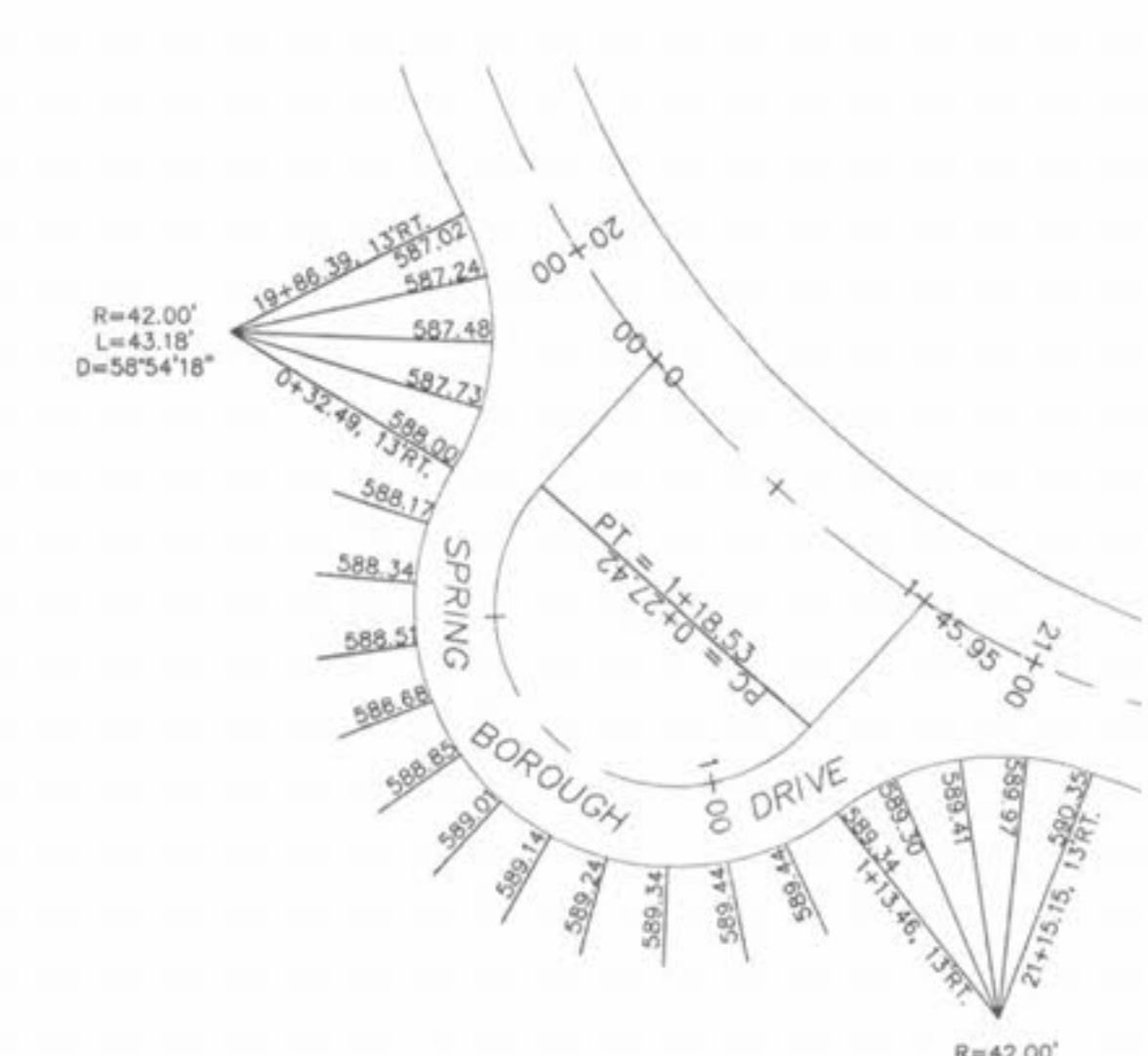
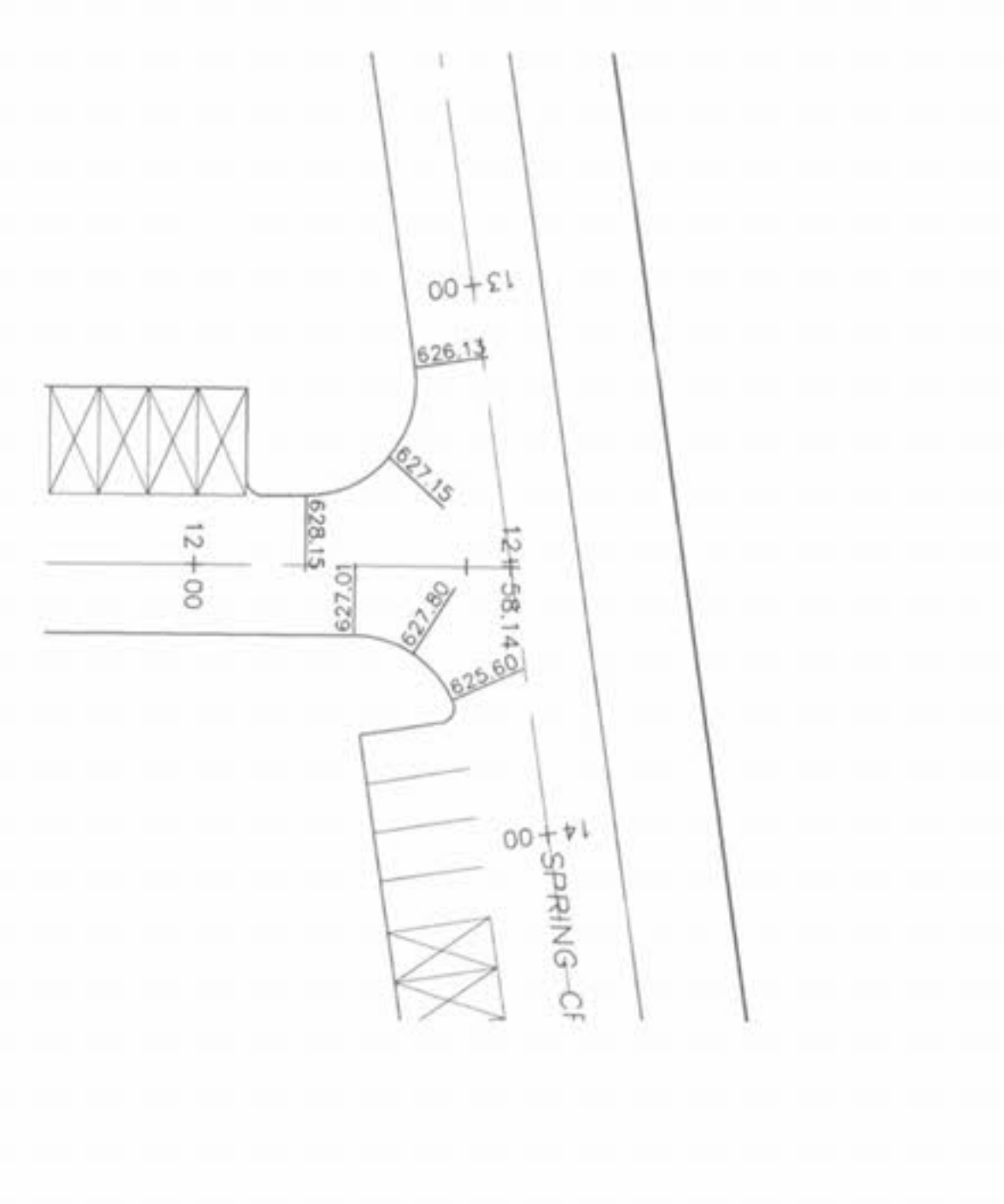
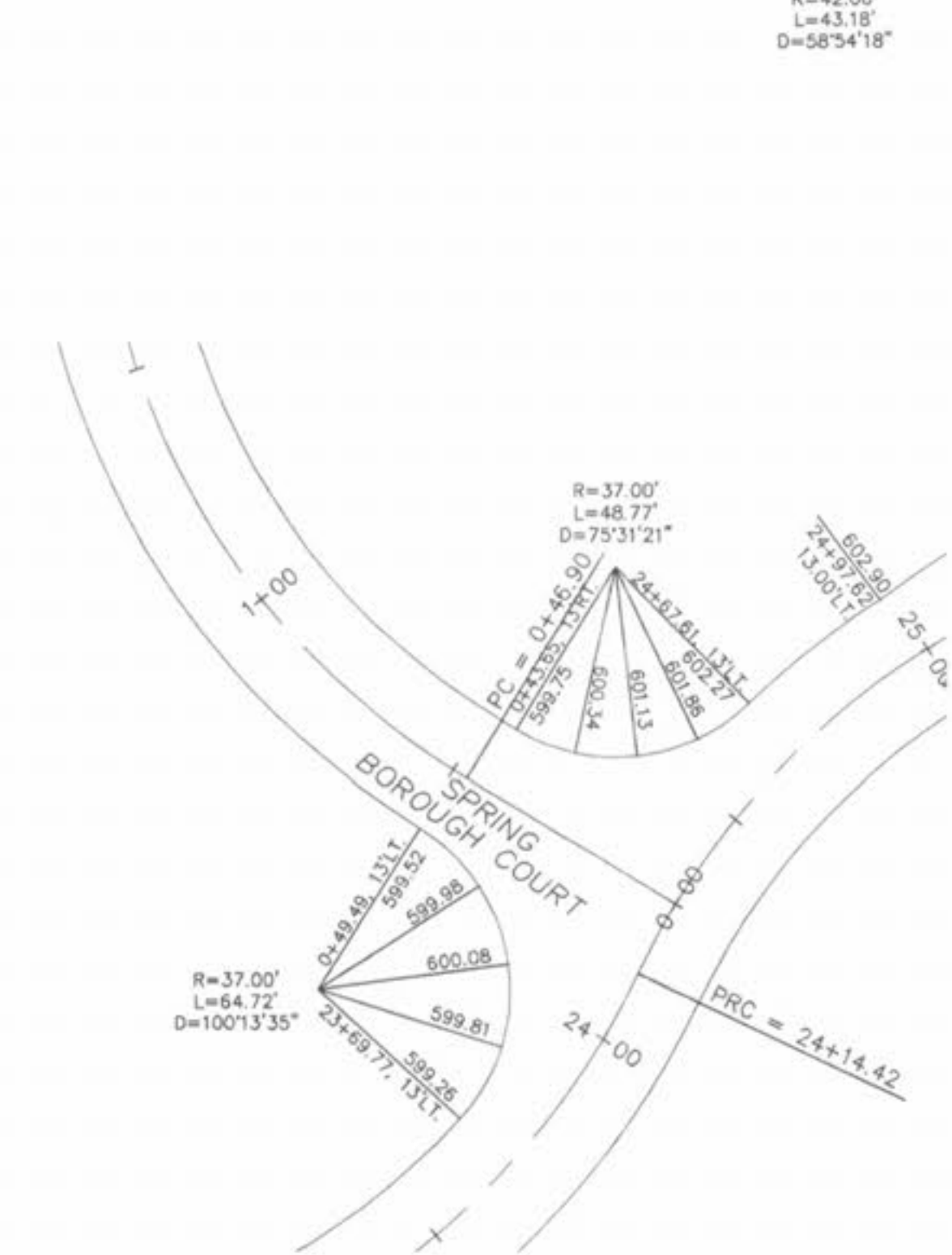
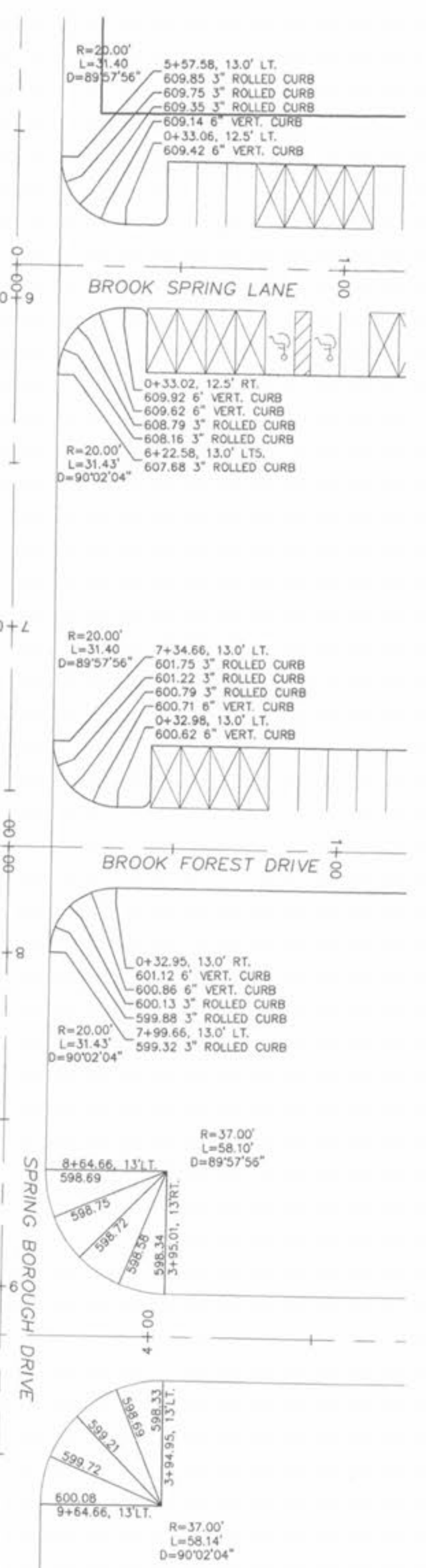
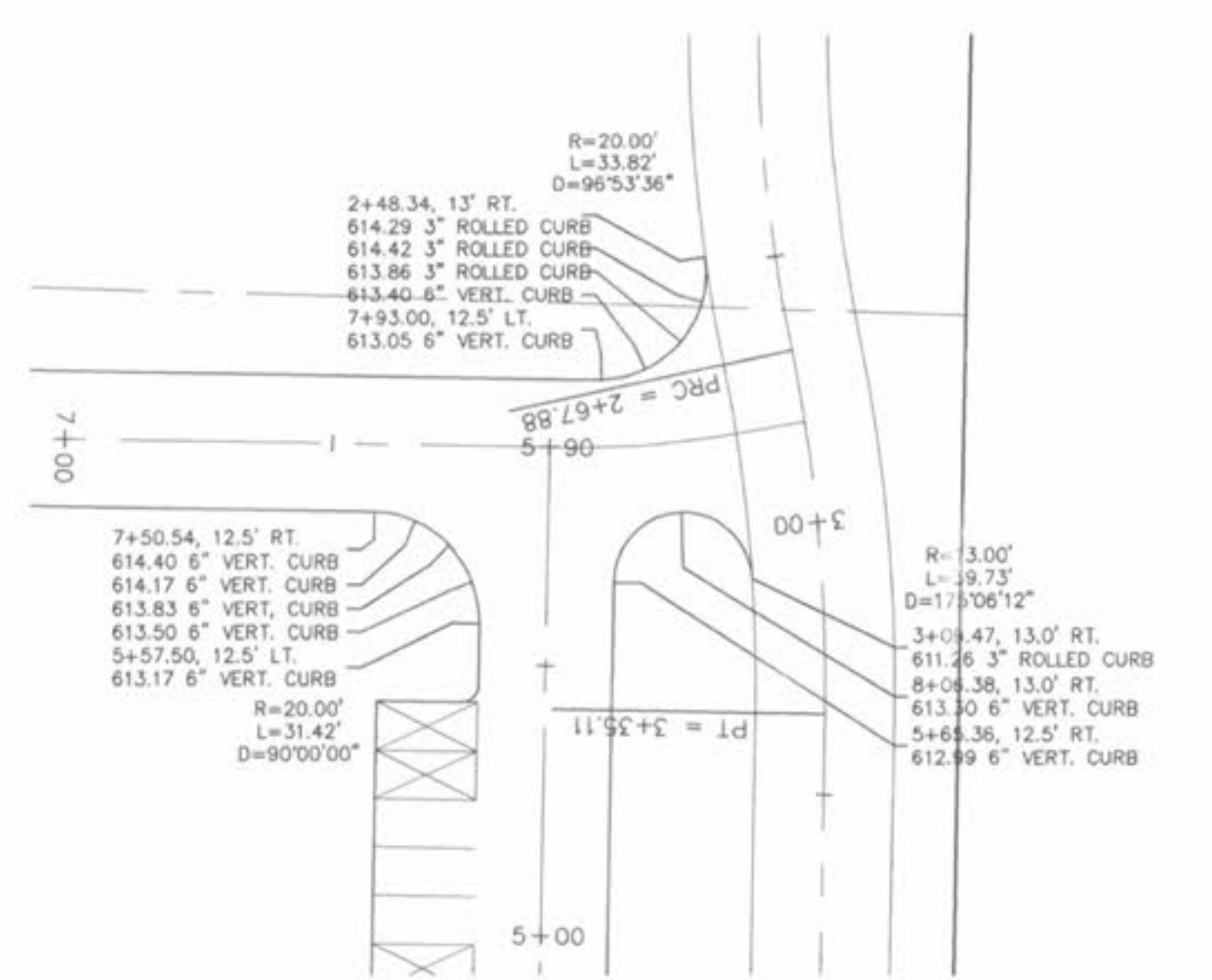
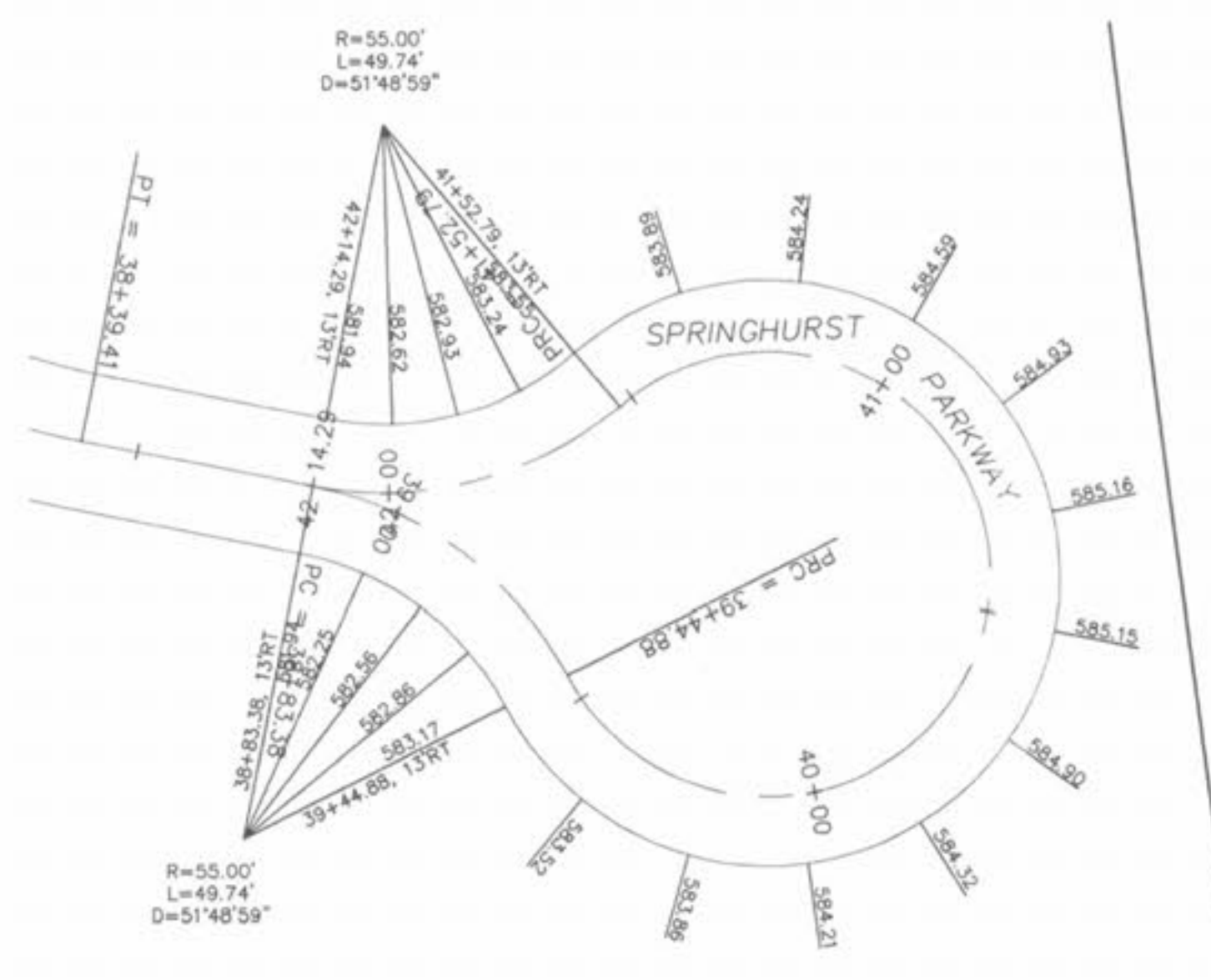
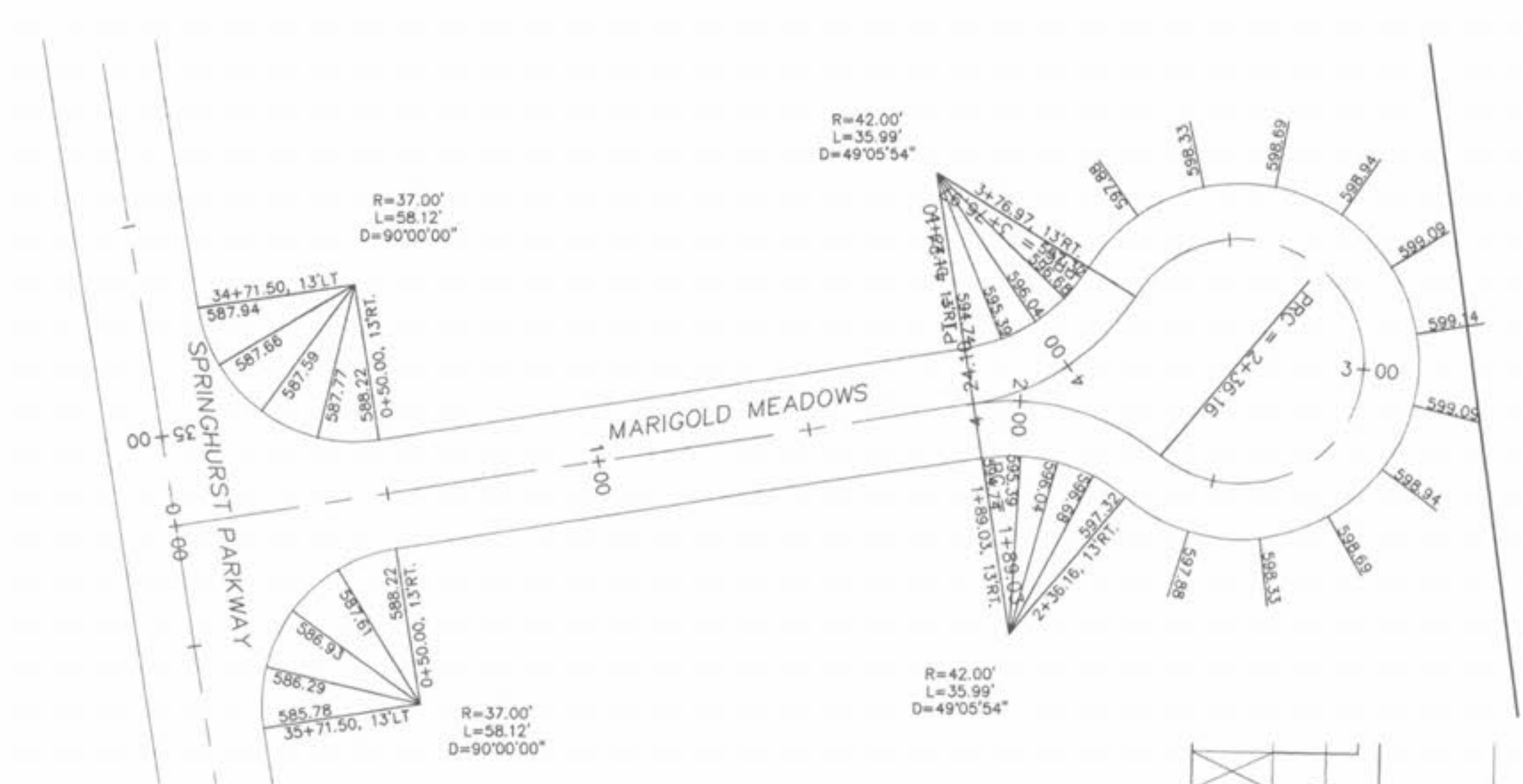


Drawing name: c:\projects\2804\Springhurst\Improvements\2804.dwg Plotted on: Aug 06, 2003 - 9:45am Plotted by: BurtHemphill



ISSUE	REMARKS/DATE
1	03-02-05 FIRST SUBMITTAL
2	04-04-05 REVISED PER DCS COMMENTS
3	05-23-05 REVISED PER CITY OF FALLON COMMENTS
4	05-27-05 REVISED PER DCS COMMENTS
5	06-09-05 REVISED PER PASO #2 COMMENTS
6	06-27-05 REVISED PER CITY OF FALLON COMMENTS
7	07-14-05 REVISED PER PASO #2 COMMENTS
8	08-08-05 REVISED PER CITY OF FALLON COMMENTS

PREPARED FOR:
SPRINGHURST, L.L.C.
 5091 NEW BAUMGARTNER ROAD
 ST. LOUIS, MISSOURI 63129
 (314) 487-6717



THE **STERLING** CO.
 ENGINEERS & SURVEYORS
 5055 NEW BAUMGARTNER ROAD
 ST. LOUIS, MISSOURI 63129
 Tel: (314) 487-6717
 E-Mail: Sterling@sterling-eng-srv.com

PROJECT: **THE VILLAGES AT SPRINGHURST**
 SHEET TITLE: **WARPINGS**

NO	03	12	269
M.S.D.			SHEET
P#			13.3
DIGITAL FILE LOCATION			OF
SERVER-STERLING-2			
c:\projects\2804			

BASE MAP

PC#2804