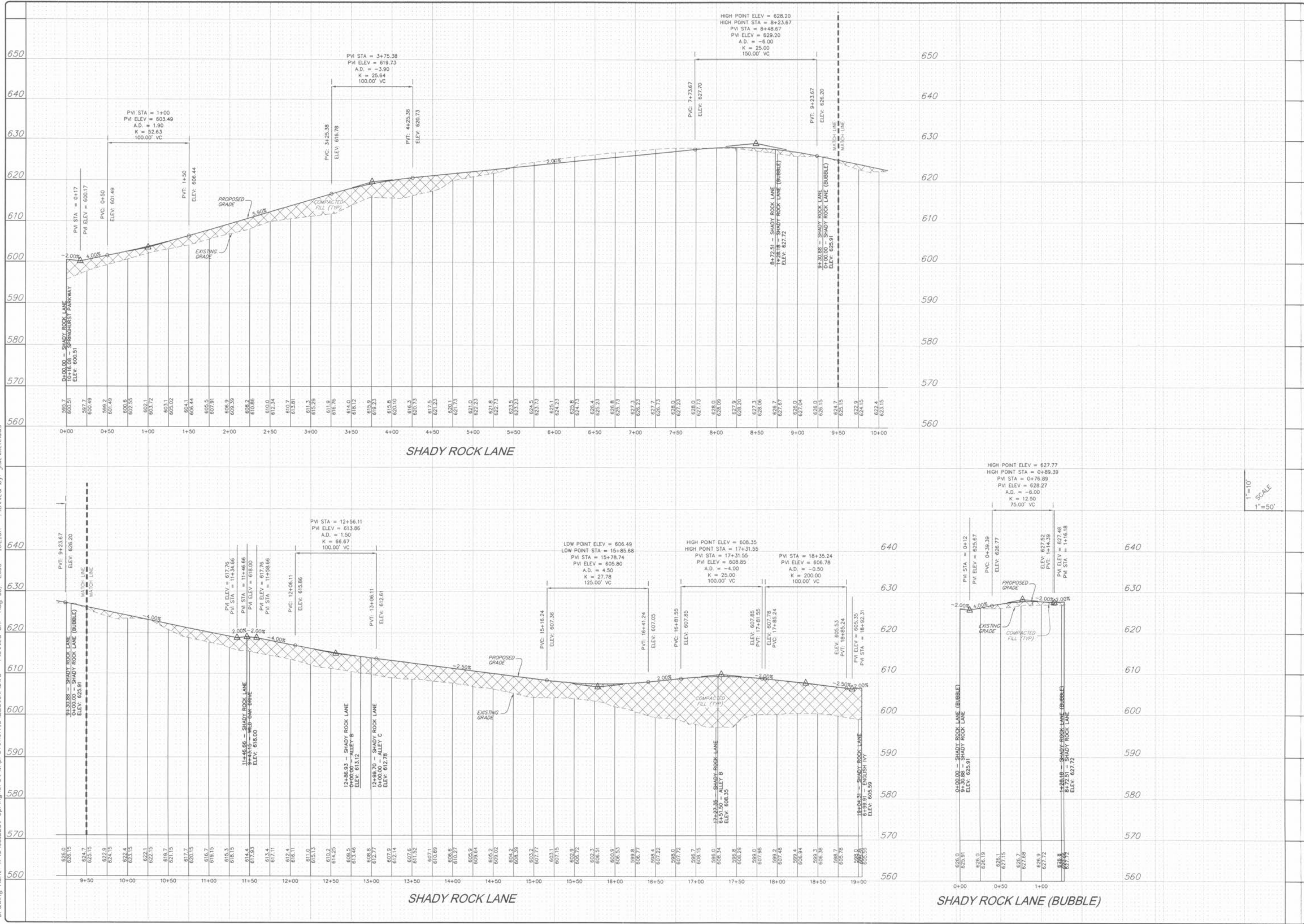


Drawing name: K:\0312269 Springhurst\Improvements\2269\MP.DWG Plotted on: Aug 06, 2005 - 10:21am Plotted by: Juetkenhaus



1"=10'
1"=50'

ISSUE	REMARKS/DATE
1	03-02-05 FIRST SUBMITTAL
2	04-04-05 REVISED PER DCSD COMMENTS
3	05-23-05 REVISED PER CITY OF FALLON COMMENTS
4	05-27-05 REVISED PER DCSD COMMENTS
5	06-09-05 REVISED PER PWS&M COMMENTS
6	06-27-05 REVISED PER CITY OF FALLON COMMENTS
7	07-14-05 REVISED PER PWS&M COMMENTS
8	08-08-05 REVISED PER CITY OF FALLON COMMENTS

PREPARED FOR:
SPRINGHURST, L.L.C.
5091 NEW BAUMGARTNER ROAD
ST. LOUIS, MISSOURI 63129
(314) 487-6717



THE **STERLING** CO
ENGINEERS & SURVEYORS
5061 NEW BAUMGARTNER ROAD
ST. LOUIS, MISSOURI 63129
(314) 487-0440 FAX 487-8944
E-Mail: Sterling@sterling-eng-sur.com

PROJECT:	THE VILLAGES AT SPRINGHURST
DRAWN:	DESIGNED:
CHECKED:	CHECKED:
SHEET TITLE:	STREET PROFILES
NO. 03 12 269	SHEET 45
M.S.D.	OF -
DIGITAL FILE LOCATION	
SERVER=STERLING-2	
LOCAL=MP.dwg	