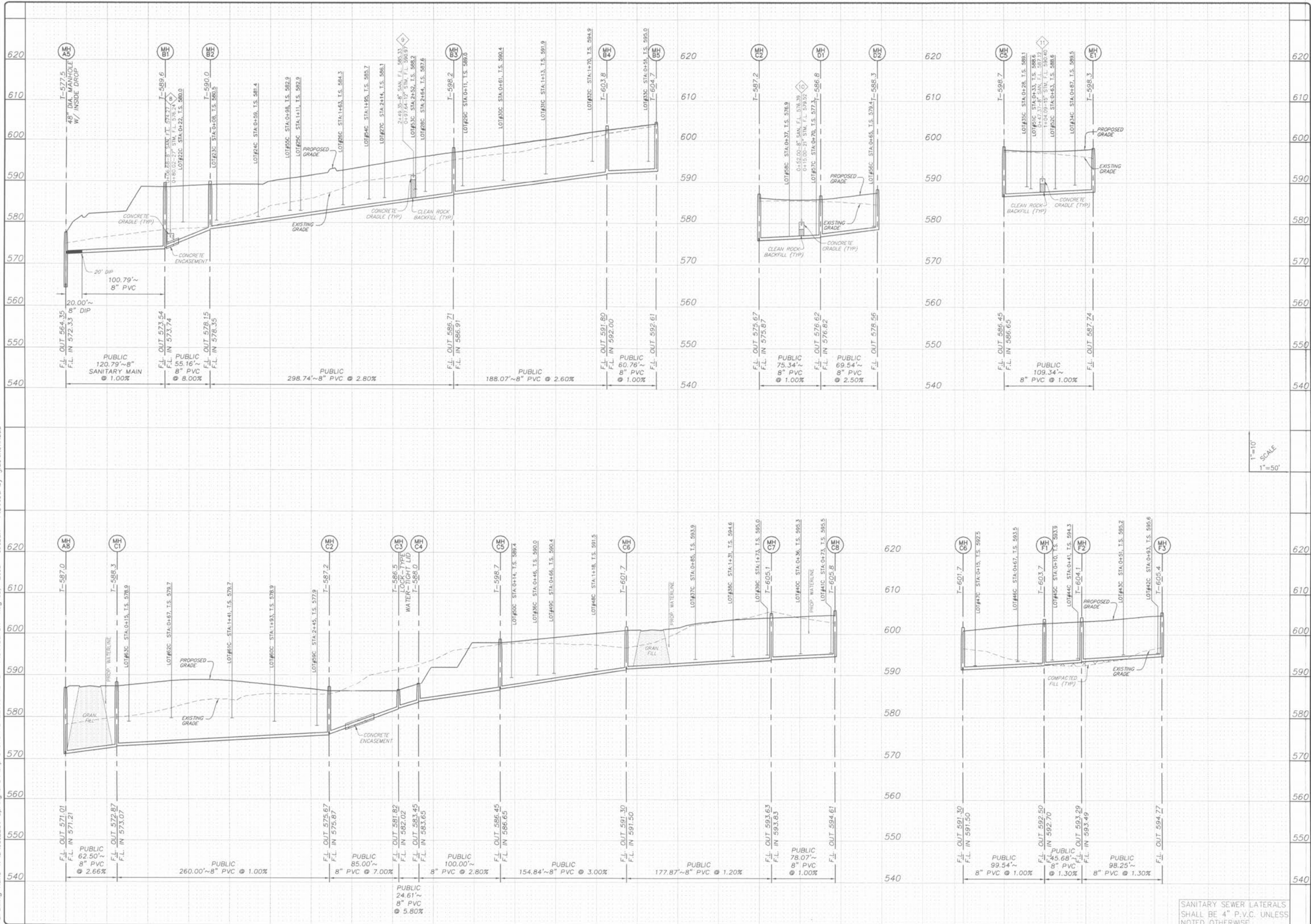


Drawing name: K:\D\0312269_Springhurst\Improvements\22691MP.DWG Plotted on: Aug 06, 2005 - 10:16am Plotted by: jluettenhaus



SANITARY SEWER LATERALS SHALL BE 4" P.V.C. UNLESS NOTED OTHERWISE.

BASE MAP

ISSUE	REMARKS/DATE
1	03-02-05 FIRST SUBMITTAL
2	04-04-05 REVISED PER DCSS COMMENTS
3	05-23-05 REVISED PER CITY OF FALLON COMMENTS
4	05-27-05 REVISED PER DCSS COMMENTS
5	06-09-05 REVISED PER PWS&W COMMENTS
6	06-27-05 REVISED PER CITY OF FALLON COMMENTS
7	07-14-05 REVISED PER PWS&W COMMENTS
8	08-08-05 REVISED PER CITY OF FALLON COMMENTS

PREPARED FOR:

THE STERLING CO.
ENGINEERS & SURVEYORS
5055 NEW BAUMGARTNER ROAD
ST. LOUIS, MISSOURI 63129
(314) 487-0440 FAX 487-8944
E-Mail: Sterling@sterling-eng-sur.com

PROJECT: **THE VILLAGES AT SPRINGHURST**

SHEET TITLE: **SANITARY SEWER PROFILES**

NO. **03 12 269**

M.S.D. SHEET **52**

DIGITAL FILE LOCATION: **SERVER-STERLING-3**

FILE: **22691MP.dwg**

OF **-**

THE STERLING CO.
ENGINEERS & SURVEYORS
5055 NEW BAUMGARTNER ROAD
ST. LOUIS, MISSOURI 63129
(314) 487-0440 FAX 487-8944
E-Mail: Sterling@sterling-eng-sur.com

PREPARED FOR:

SPRINGHURST, L.L.C.
5091 NEW BAUMGARTNER ROAD
ST. LOUIS, MISSOURI 63129
(314) 487-6717

PROJECT: **THE VILLAGES AT SPRINGHURST**

SHEET TITLE: **SANITARY SEWER PROFILES**

NO. **03 12 269**

M.S.D. SHEET **52**

DIGITAL FILE LOCATION: **SERVER-STERLING-3**

FILE: **22691MP.dwg**

OF **-**