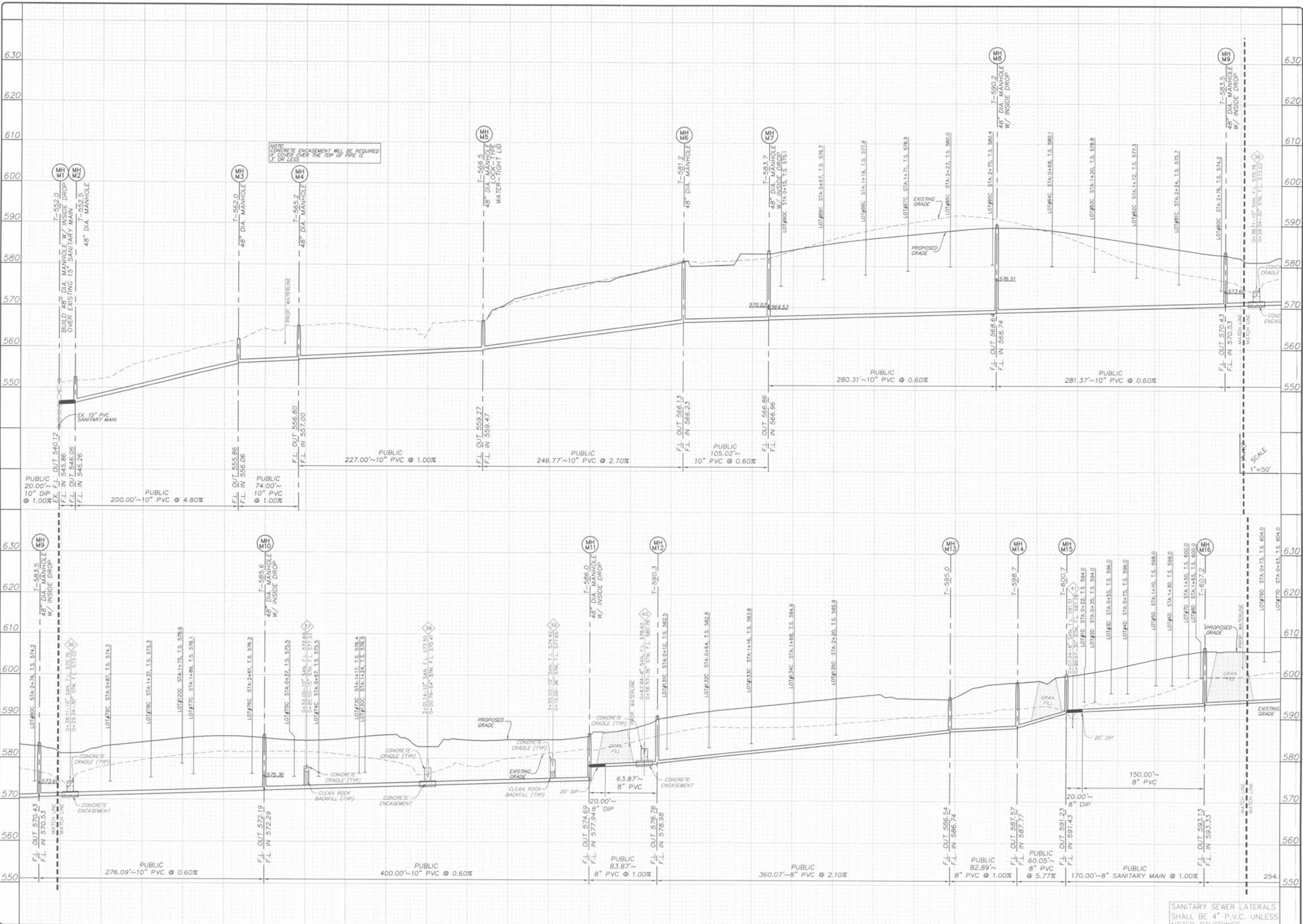


Drawing name: K:\D\0312269_Springhurst\Improvements_2269IMP.DWG Plotted on Aug 06, 2005 - 10:16am Plotted by Jurettienhaus



PROJECT:	THE VILLAGES AT SPRINGHURST	
DRAWN:	DESIGNED:	CHECKED:
NO.	03 12 269	
M.S.D.	SHEET	
#	5.5	
DIGITAL FILE LOCATION: SERVER=STERLING-2		
OF		

PROJECT: SANITARY SEWER PROFILES

PREPARED BY: **THE STERLING CO.**
STERLING & SURVEYORS
 ENGINEERS & SURVEYORS
 5091 NEW BAUMGARTNER ROAD
 ST. LOUIS, MISSOURI 63129
 (314) 487-0440 FAX 487-8844
 E-Mail: Sterling@sterling-eng-sur.com

PREPARED FOR: **SPRINGHURST, L.L.C.**
 5091 NEW BAUMGARTNER ROAD
 ST. LOUIS, MISSOURI 63129
 (314) 487-6717

ISSUE REMARKS/DATE:

1	03-02-05	FIRST SUBMITTAL
2	04-04-05	REVISED PER DCSD COMMENTS
3	05-23-05	REVISED PER CITY OF FALLON COMMENTS
4	05-27-05	REVISED PER DCSD COMMENTS
5	06-09-05	REVISED PER PWS&Z COMMENTS
6	06-27-05	REVISED PER CITY OF FALLON COMMENTS
7	07-14-05	REVISED PER PWS&Z COMMENTS
8	08-08-05	REVISED PER CITY OF FALLON COMMENTS

NOTE: CONCRETE ENCASUREMENT WILL BE REQUIRED IF COVER OVER THE TOP OF PIPE IS 4" OR LESS.

SANITARY SEWER LATERALS SHALL BE 4" P.V.C. UNLESS NOTED OTHERWISE.

BASE MAP PC#2804