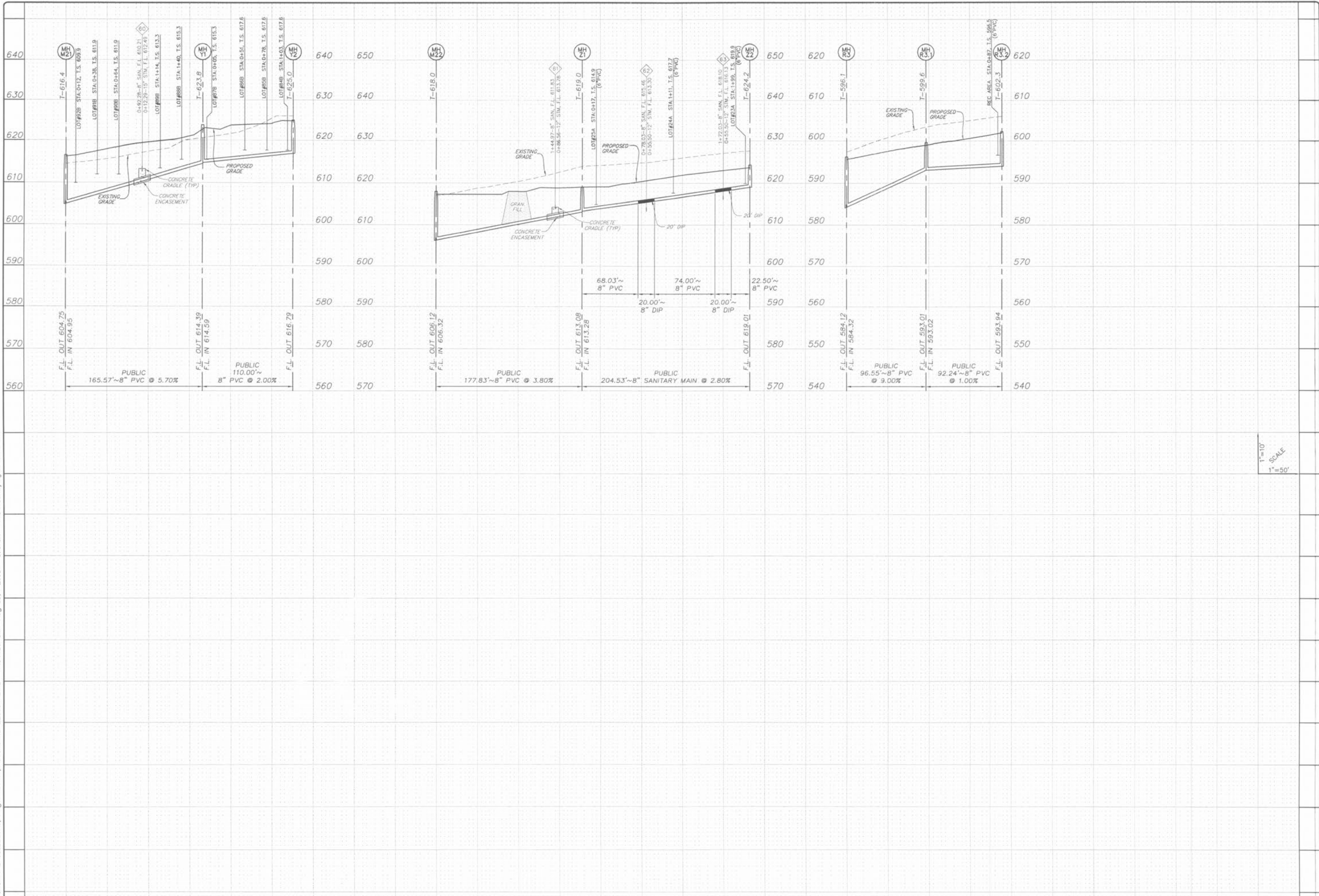


Drawing name: K:\D\0312269_Springhurst\Improvements\2269IMP.DWG Plotted on: Aug 06, 2005 - 10:17am Plotted by: jluetherhaus



1"=10'
1"=50'
SCALE

SANITARY SEWER LATERALS SHALL BE 4" P.V.C. UNLESS NOTED OTHERWISE.

ISSUE	REMARKS/DATE
1	03-02-05 FIRST SUBMITTAL
2	04-04-05 REVISED PER DCSD COMMENTS
3	05-23-05 REVISED PER CITY OF FALLON COMMENTS
4	05-27-05 REVISED PER DCSD COMMENTS
5	06-09-05 REVISED PER PASWD#2 COMMENTS
6	06-27-05 REVISED PER CITY OF FALLON COMMENTS
7	07-14-05 REVISED PER PASWD#2 COMMENTS
8	08-08-05 REVISED PER CITY OF FALLON COMMENTS

PREPARED FOR:
THE STERLING CO.
ENGINEERS & SURVEYORS
 5085 NEW BAUMGARTNER ROAD
 ST. LOUIS, MISSOURI 63129
 (314) 487-6717
 E-Mail: Sterling@sterling-eng.sur.com

PROJECT:
THE VILLAGES AT SPRINGHURST
 SHEET TITLE:
 SANITARY SEWER PROFILES

NO. 03 12 269
 M.S.D. SHEET
 P# 59
 DIGITAL FILE LOCATION
 SERVER=STERLING-2
 2/20/05
 OF 1

DRAWN:
 DESIGNED:
 CHECKED:

BASE MAP
 PC#2804