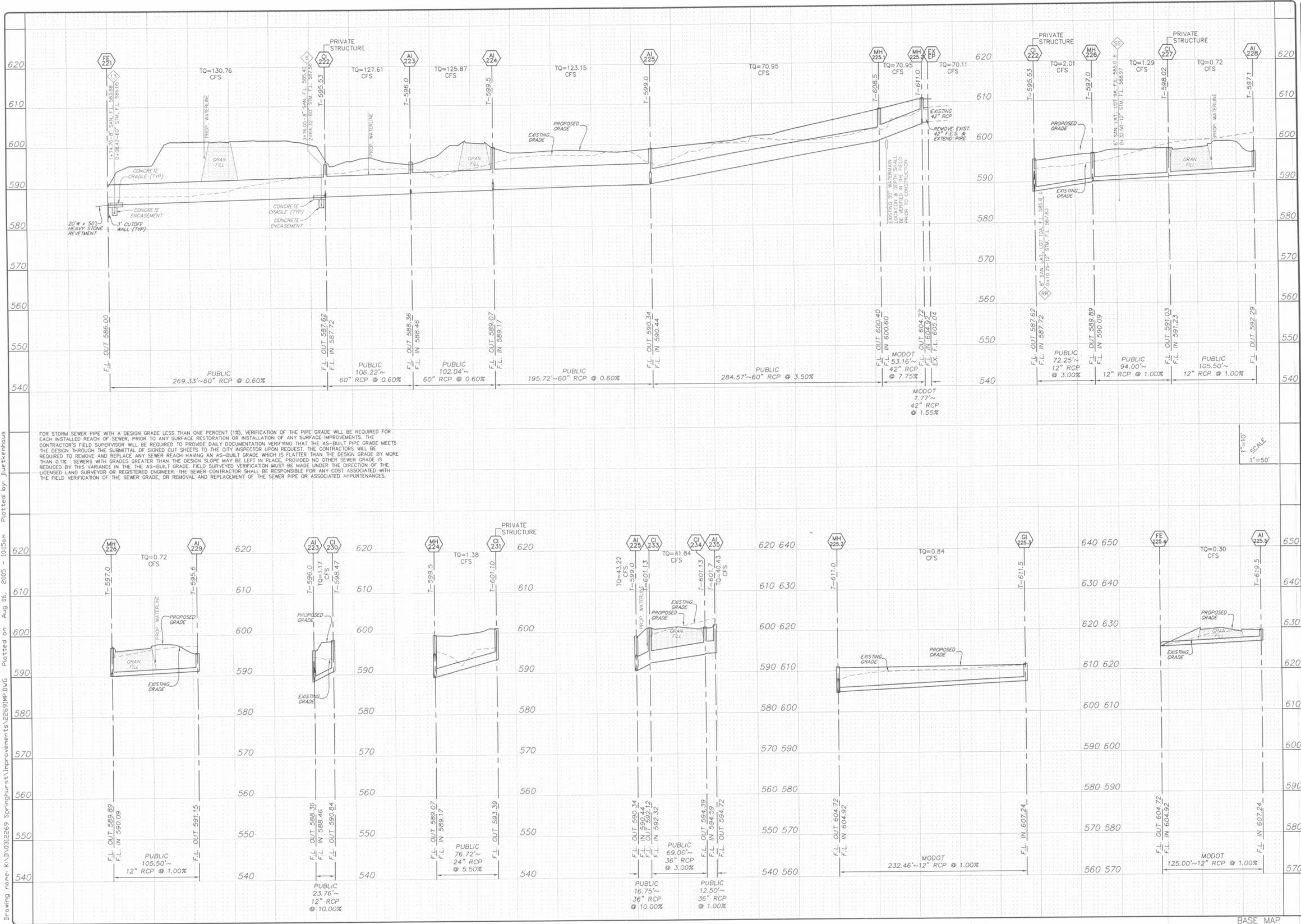


Drawing name: K:\0312269 Springhurst\Improvements\2269IMP.DWG Plotted on: Aug 06, 2005 - 10:15am Plotted by: Juethenhaus



ISSUE	REMARKS/DATE
1	03-02-05 FIRST SUBMITTAL
2	04-04-05 REVISED PER DCSO COMMENTS
3	05-23-05 REVISED PER CITY OF FALLON COMMENTS
4	05-27-05 REVISED PER DCSO COMMENTS
5	06-09-05 REVISED PER CITY OF FALLON COMMENTS
6	06-27-05 REVISED PER DCSO COMMENTS
7	07-14-05 REVISED PER PHISDC COMMENTS
8	08-08-05 REVISED PER CITY OF FALLON COMMENTS

PREPARED FOR:
STERLING CO.
 ENGINEERS & SURVEYORS
 5091 NEW BAUMGARTNER ROAD
 ST. LOUIS, MISSOURI 63129
 (314) 487-0440 FAX 487-8944
 E-Mail: Sterling@sterling-eng-sur.com

PREPARED BY:
 [Signature]

PROJECT:
THE VILLAGES AT SPRINGHURST

DRAWN:
 DESIGNED:
 CHECKED:

NO. 03 12 269
 M.S.D. SHEET
 P# 3.10
 OF

DIGITAL FILE LOCATION:
 SERVER=STERLING-2
 C:\DWG\0312269

BASE MAP PC#2804

STORM SEWER PROFILES