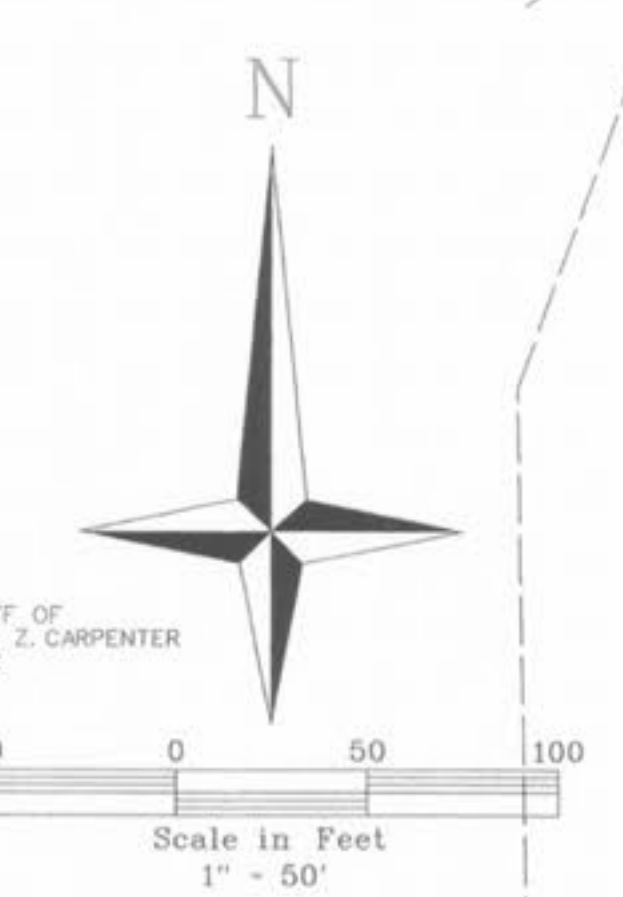
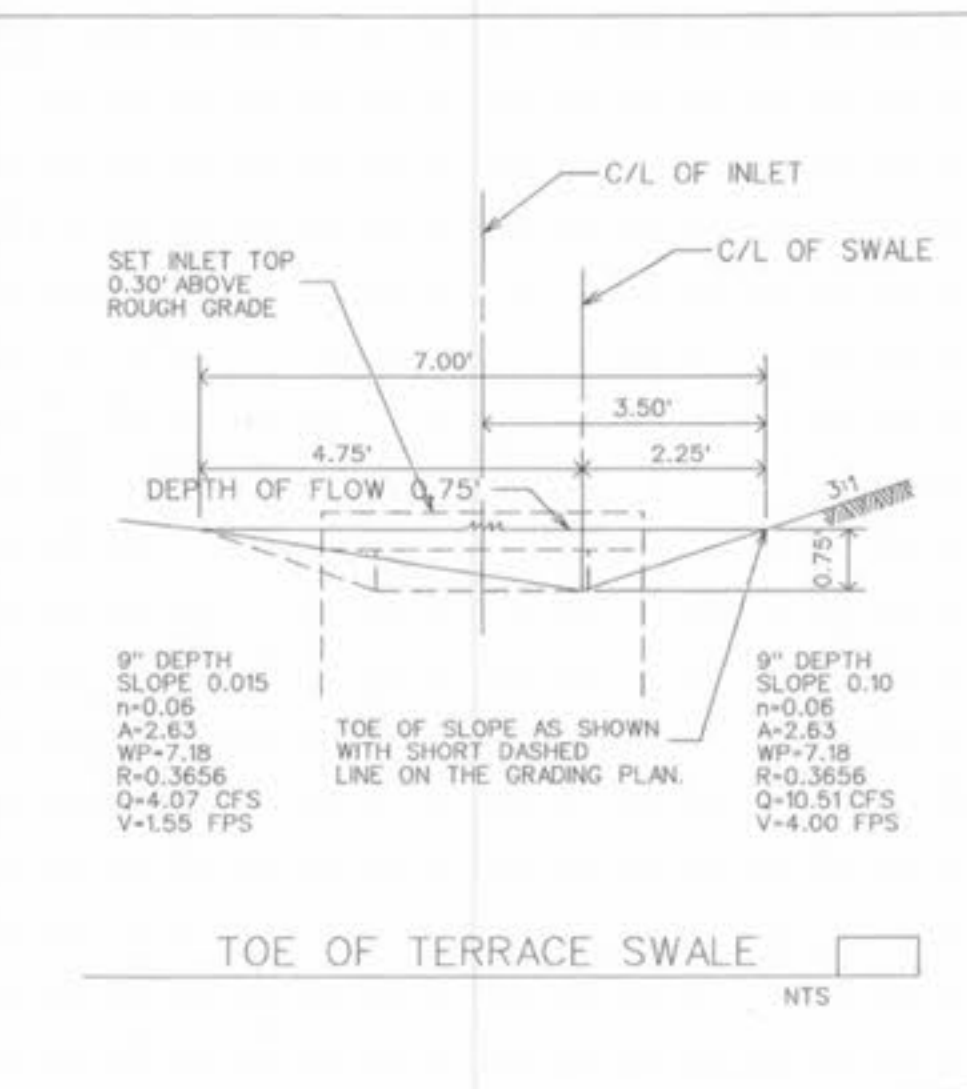
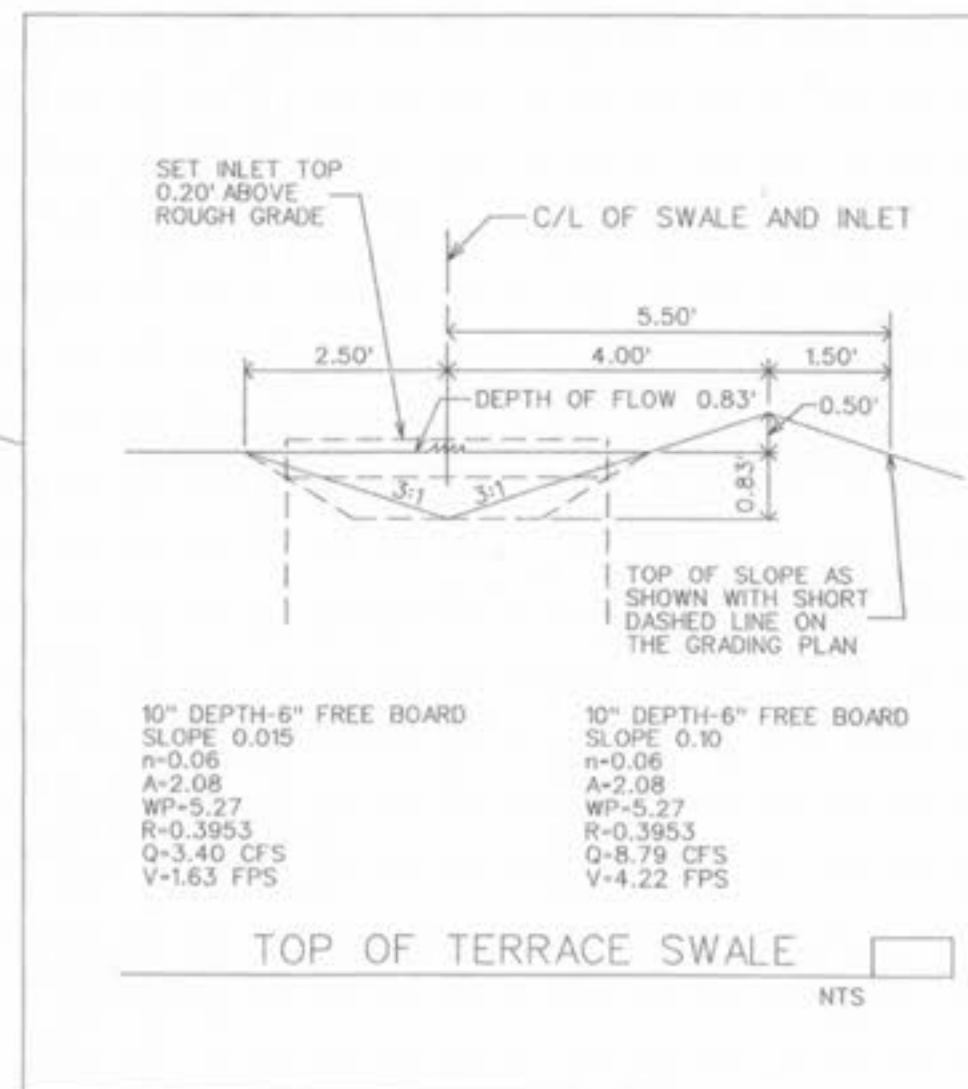


CASE NO. 5543
488/676



The underground utilities shown herein were plotted from available information and do not necessarily reflect the actual existence, or nonexistence, size, type, number, or location of these or other utilities. The general contractor shall be responsible for verifying the actual location of all underground utilities in the field, shown or not shown, prior to any grading, excavation, or construction of improvements. These provisions shall in no way absolve any party from complying with the Underground Facility Safety and Damage Prevention Act, Chapter 319, RSMo.

NOTE: IN ALL AREAS WHERE THE SANITARY AND STORM SEWER LINES RUN PARALLEL COMACTION WILL BE VERIFIED BY THE SOILS CONSULTANT.

NOTE: STREET TREES SHALL BE PLACED IN ACCORDANCE WITH CITY OF OFALLON ZONING CODE - SECTION 400.420.

NOTE: NO OCCUPANCY PERMITS SHALL BE ISSUED FOR THIS PHASE UNTIL STREET CONNECTION TO ELAINE DRIVE IS CONSTRUCTED WITH FUTURE PHASE OF DEVELOPMENT.

NOTE: ALL TRAFFIC FOR THIS SITE SHALL ENTER FROM ELAINE DRIVE

PHASE ONE TREE PRESERVATION CALCULATIONS
28.20 ACRES EXISTING TREES
7.86 ACRES TO REMAIN
27.82 TO REMAIN

WALDEN POND, L.L.C.
2529 LEMAY FERRY RD.
ST. LOUIS, MO. 63125



THE VILLAGES AT WALDEN POND

SITE PLAN
Design By: G.A.S.
Drawn By: G.A.S.
Checked By: E.A.K.
B-5973
05-11-10
02