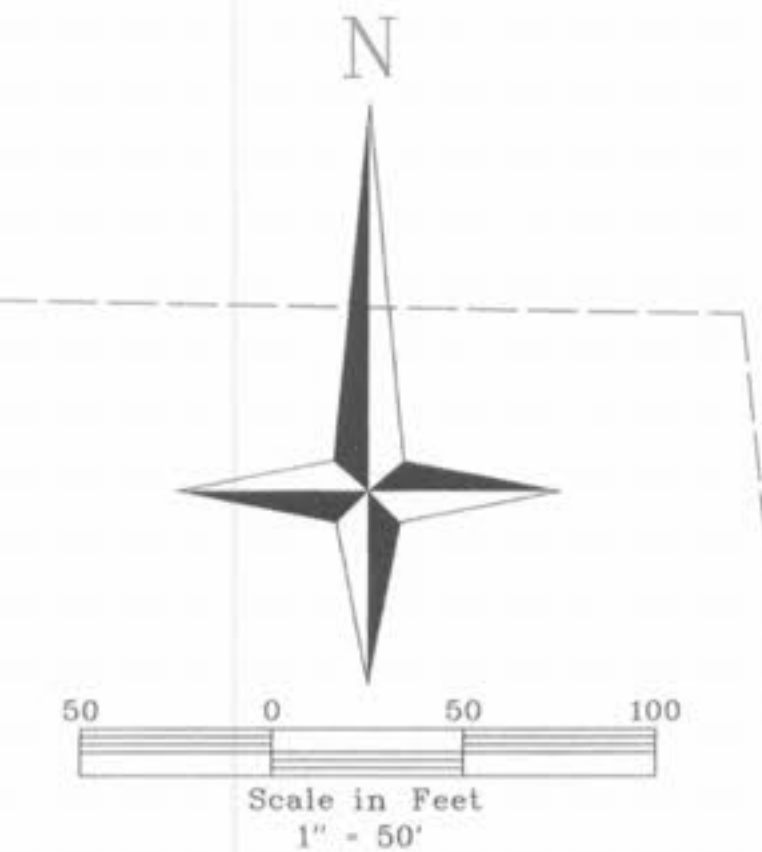
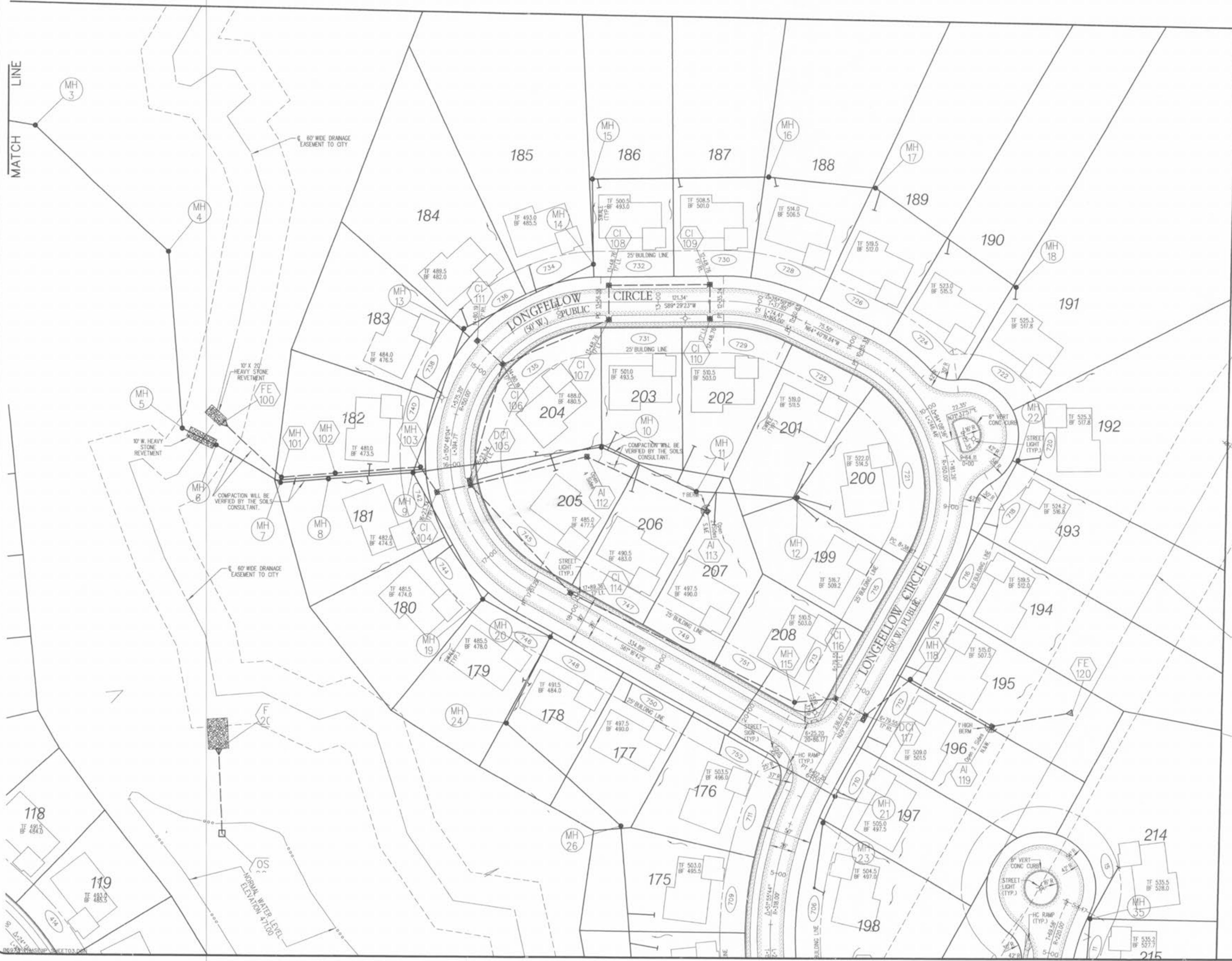
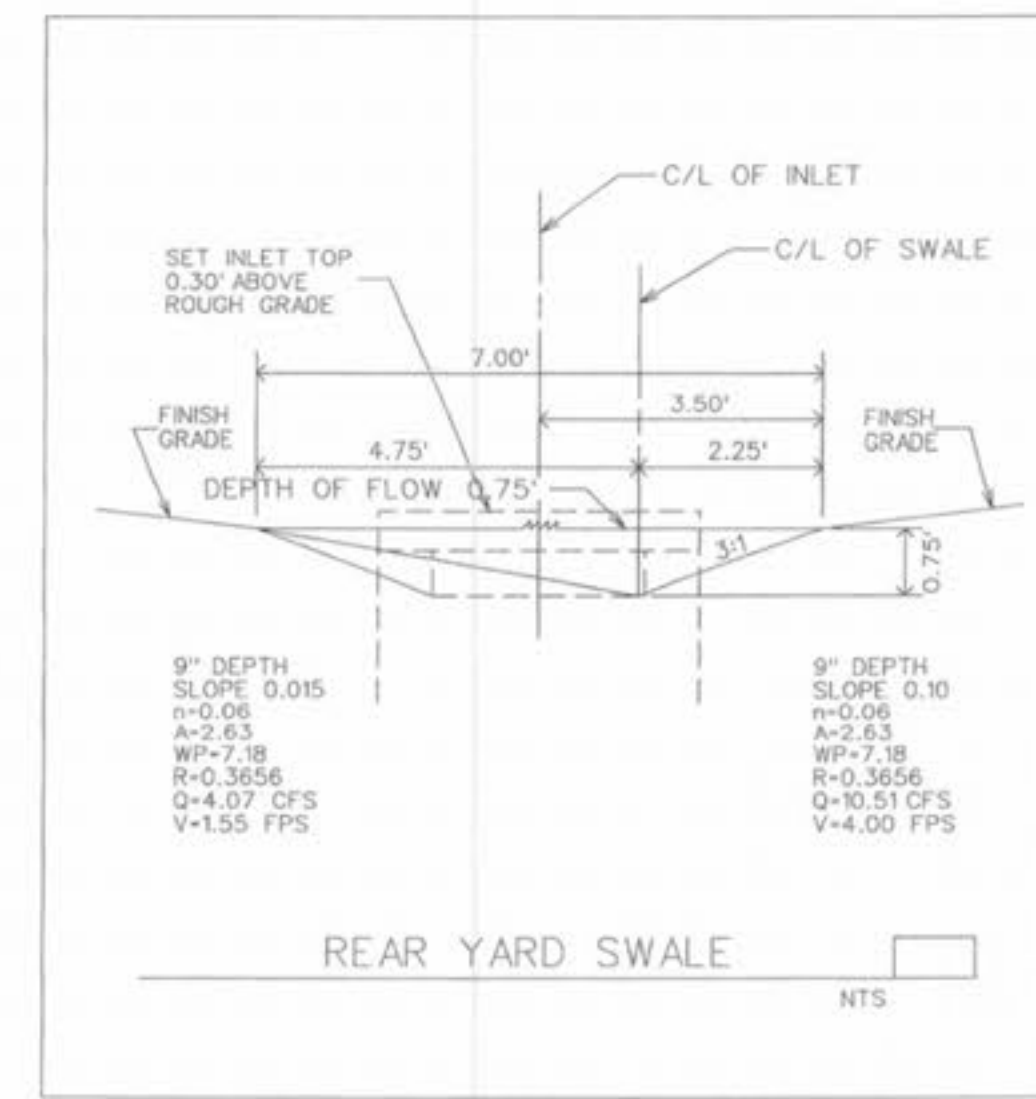


FLOOD PLAN AND FLOODWAY SHOWN ON THIS PLAN IS PER FIRM MAP NUMBER 291B3C0230 E MAP REVISED AUGUST 2, 1996



PROPERTY N/E OF RICHARD A. AND SANDRA K. SEMLER 978/174

CENTER LINE 100' RIGHT OF WAY BY EASEMENT TO CENTRAL ELECTRIC POWER COOPERATIVE CASE NO. 5543 488/676

The underground utilities shown herein were plotted from available information and do not necessarily reflect the actual existence, or nonexistence, size, type, number, or location of these or other utilities. The general contractor shall be responsible for verifying the actual location of all underground utilities in the field, shown or not shown, prior to any grading, excavation, or construction of improvements. These provisions shall in no way absolve any party from complying with the Underground Facility Safety and Damage Prevention Act, Chapter 319, RSMo.

WALDEN POND, L.L.C.
2529 LEMAY FERRY RD.
ST. LOUIS, MO. 63125



THE VILLAGES AT WALDEN POND

SITE PLAN	Design By: G.A.S.
	Drawn By: G.A.S.
	Checked By: E.A.K.
	B-5973
	05-03-W
	03