

**TREE PRESERVATION CALCULATIONS**  
 CITY OF OFALLON, MO; SECTION 402.040.B  
 DURING DEVELOPMENT, ONCE A SITE PLAN OR PRELIMINARY PLAT APPROVAL HAS BEEN REQUESTED, A MINIMUM OF TWENTY PERCENT (20%) OF THE EXISTING TREES OR FIFTEEN TREES PER ACRE SHALL BE RETAINED.  
 ARAGON REQUIREMENT: RETAIN TWENTY PERCENT (20%) OF THE EXISTING TREES.  
 CALCULATIONS (TREES 6" CALIPER AND GREATER):  
 EXISTING TREES = 10.27 AC.  
 TREES TO BE REMOVED = 7.19 AC.  
 TREES TO BE RETAINED = 2.88 AC.  
 % RETAINED = 28.10% > 20%  
 GENERAL NOTES:  
 1. CLEARING LIMITS SHALL BE VISIBLY MARKED IN THE FIELD PRIOR TO REMOVAL OF TREES.

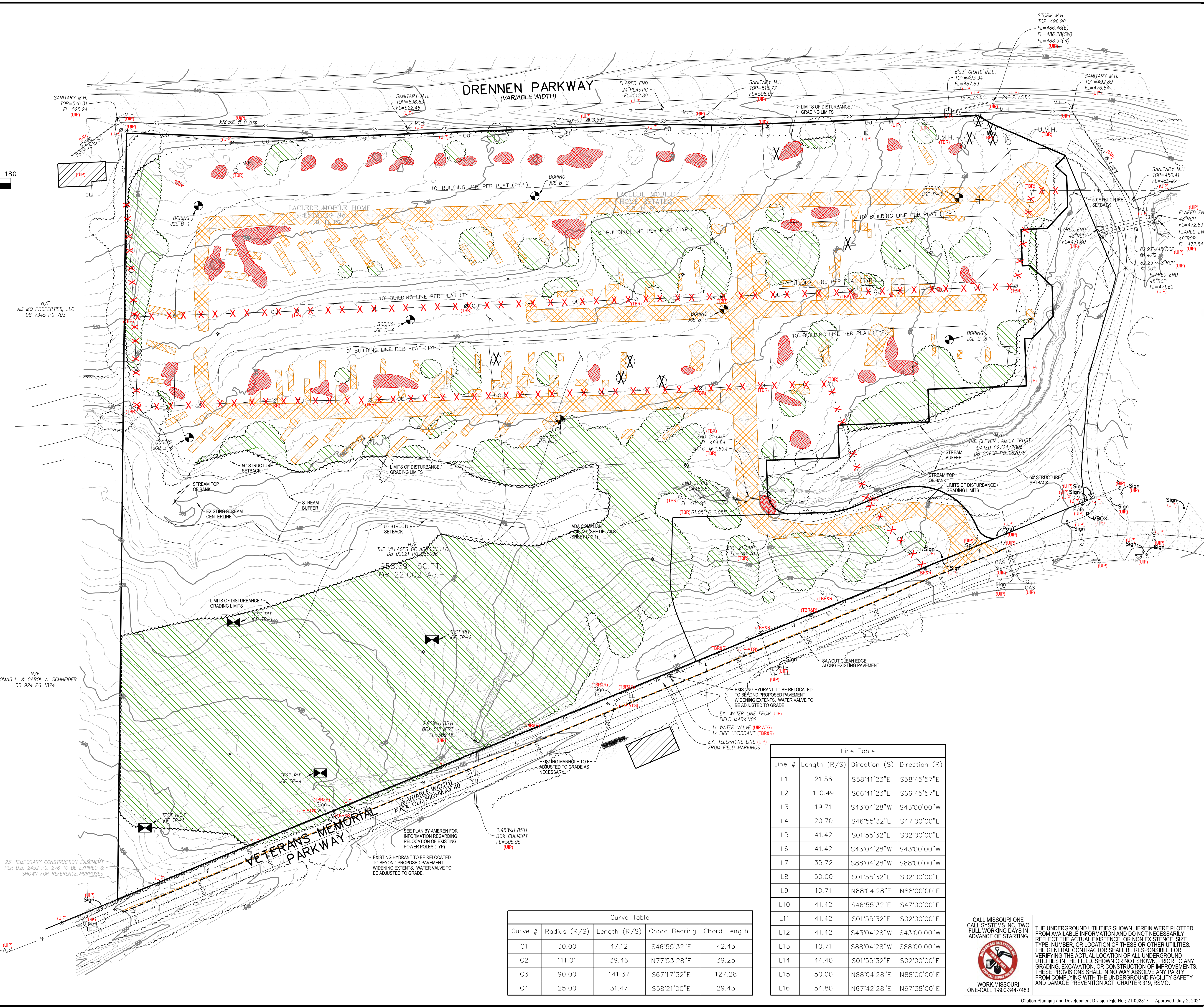
**DEMOLITION LEGEND**  
 - - - SAWCUT PAVEMENT  
 X X X UTILITY TO BE REMOVED  
 X TREE TO BE REMOVED  
 TO BE REMOVED  
 USE IN PLACE  
 TO BE REMOVED & REPLACED  
 AREA OF EXISTING TREES TO BE REMOVED  
 AREA OF EXISTING PAVEMENT TO BE REMOVED  
 AREA OF CULTURAL DEBRIS TO BE REMOVED  
 EDGE OF NEW TREE LINE

**CLEARING NOTE:**  
 NO LAND DISTURBANCE PERMITTED (INCLUDING REMOVAL OF TREE STUMPS, CONCRETE PADS, ETC.) PRIOR TO RECEIPT OF ISSUED MISSOURI DEPARTMENT OF NATURAL RESOURCES (MOSNR) LAND DISTURBANCE PERMIT.

SEPARATE CLEARING PERMIT RECEIVED FROM THE CITY OF OFALLON  
 PERMIT NO. GR22-000001  
 FILE NO. 22-000312  
 DATE APPROVED: FEBRUARY 11, 2022  
 EXPIRATION DATE: FEBRUARY 11, 2023

N/E  
 THOMAS L. & CAROL A. SCHNEIDER  
 DB 924 PG 1874

25' TEMPORARY CONSTRUCTION EASEMENT PER D.B. 2452 PG. 276 TO BE EXPIRED & SHOWN FOR REFERENCE PURPOSES



**Curve Table**

Curve #	Radius (R/S)	Length (R/S)	Chord Bearing	Chord Length
C1	30.00	47.12	S46°55'32"E	42.43
C2	111.01	39.46	N77°53'28"E	39.25
C3	90.00	141.37	S67°17'32"E	127.28
C4	25.00	31.47	S58°21'00"E	29.43

**Line Table**

Line #	Length (R/S)	Direction (S)	Direction (R)
L1	21.56	S58°41'23"E	S58°45'57"E
L2	110.49	S66°41'23"E	S66°45'57"E
L3	19.71	S43°04'28"W	S43°00'00"W
L4	20.70	S46°55'32"E	S47°00'00"E
L5	41.42	S01°55'32"E	S02°00'00"E
L6	41.42	S43°04'28"W	S43°00'00"W
L7	35.72	S88°04'28"W	S88°00'00"W
L8	50.00	S01°55'32"E	S02°00'00"E
L9	10.71	N88°04'28"E	N88°00'00"E
L10	41.42	S46°55'32"E	S47°00'00"E
L11	41.42	S01°55'32"E	S02°00'00"E
L12	41.42	S43°04'28"W	S43°00'00"W
L13	10.71	S88°04'28"W	S88°00'00"W
L14	44.40	S01°55'32"E	S02°00'00"E
L15	50.00	N88°04'28"E	N88°00'00"E
L16	54.80	N67°42'28"E	N67°38'00"E



CALL MISSOURI ONE CALL SYSTEMS INC. TWO FULL WORKING DAYS IN ADVANCE OF STARTING  
 THE UNDERGROUND UTILITIES SHOWN HEREIN WERE PLOTTED FROM AVAILABLE INFORMATION AND DO NOT NECESSARILY REFLECT THE ACTUAL EXISTENCE, OR NON EXISTENCE, SIZE, TYPE, NUMBER, OR LOCATION OF THESE OR OTHER UTILITIES. THE GENERAL CONTRACTOR SHALL BE RESPONSIBLE FOR VERIFYING THE ACTUAL LOCATION OF ALL UNDERGROUND UTILITIES IN THE FIELD, SHOWN OR NOT SHOWN, PRIOR TO ANY GRADING, EXCAVATION, OR CONSTRUCTION OF IMPROVEMENTS. THESE PROVISIONS SHALL IN NO WAY ABSOLVE ANY PARTY FROM COMPLYING WITH THE UNDERGROUND FACILITY SAFETY AND DAMAGE PREVENTION ACT, CHAPTER 319, RSMO.

**Lombardo**  
 H · O · M · E · S  
 4 Research Park Drive, Suite 130  
 St. Charles, MO 63304  
 Phone: (636) 265-2710

**VOLZ**  
 Incorporated  
 PROFESSIONAL ENGINEERING  
 LAND SURVEYING  
 TRANSPORTATION  
 CONSTRUCTION MANAGEMENT  
 10849 Indian Head Indl. Blvd.  
 St. Louis, Missouri 63132  
 St. Louis, Missouri 63132  
 314.890.1250 Fax  
 www.volzinc.com  
 Aulinity #203

MISSOURI BOARD OF PROFESSIONAL ENGINEERS  
 RYAN L. HOLMES  
 NUMBER  
 PE-2017018988  
 EXPIRES 12-22  
 RYAN L. HOLMES  
 Professional Engineer  
 PE-2017018988

**THE VILLAGES AT ARAGON**  
 VETERANS MEMORIAL PARKWAY  
 OFALLON, MO 63366

**DEMOLITION PLAN**  
 Permit ID: 2106C-S026-06-0001.10  
 Design By: R/LH  
 Drawn By: R/LH  
 Checked By: R/LH  
 Project No. GR22-000001  
 Volz Project # 22649  
 10-12-22  
 C05