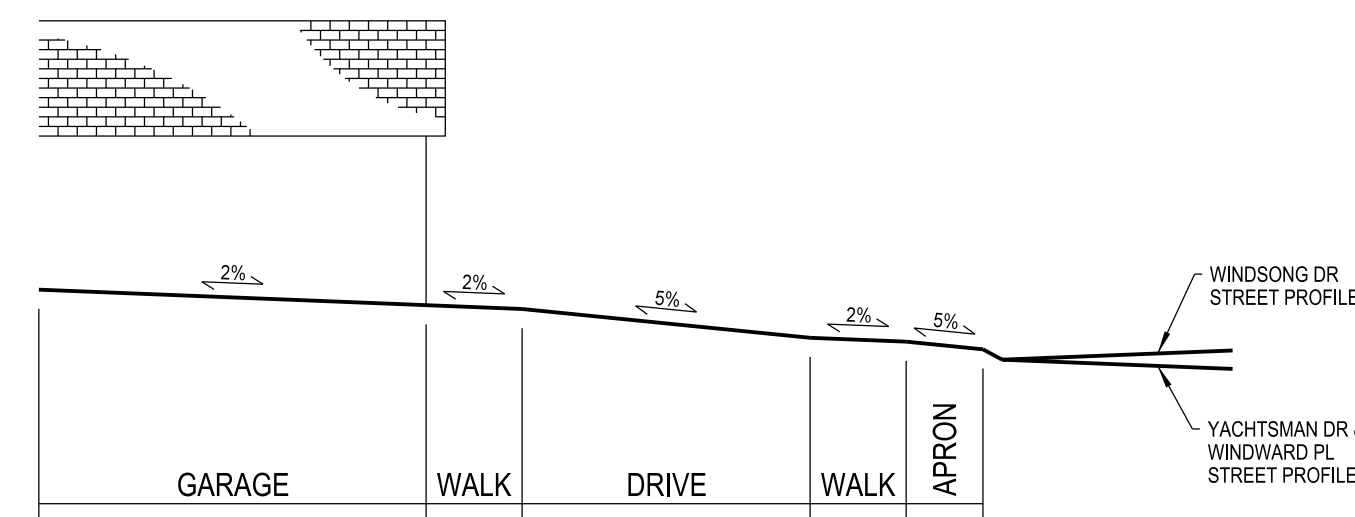


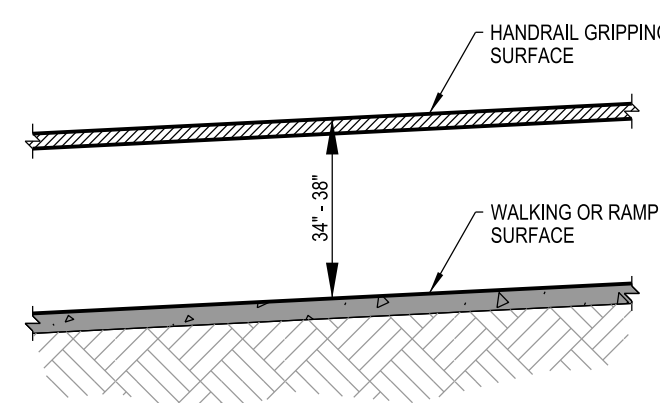
TYPICAL MAXIMUM SLOPE BUILDING LAYOUT

SCALE: 1" = 10'



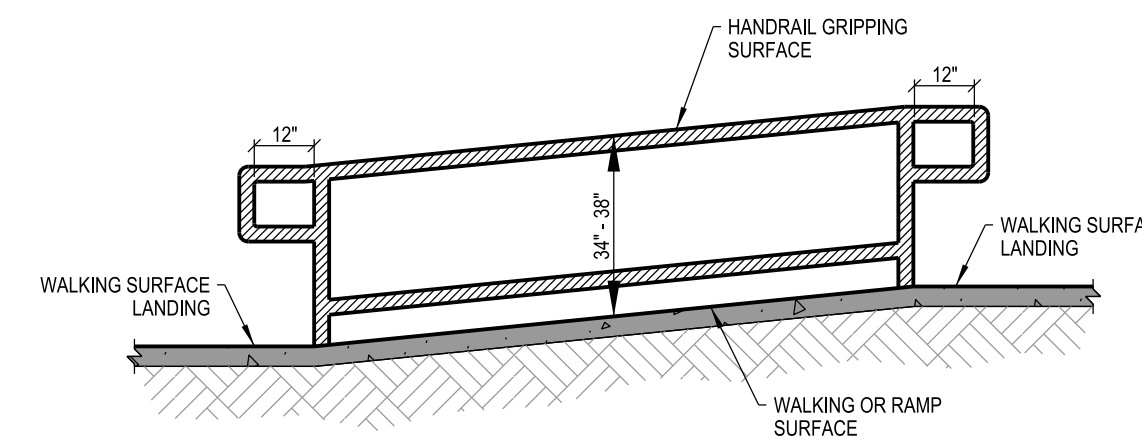
MAXIMUM SLOPES PROFILE

HORIZONTAL SCALE: 1" = 10'
VERTICAL SCALE: 1" = 5'



ANSI 505.4 - HANDRAIL HEIGHT:
TOP OF GRIPPING SURFACES OF HANDRAILS SHALL BE 34 INCHES (865 mm) MINIMUM AND 38 INCHES MAXIMUM (965 mm) VERTICALLY ABOVE WALKING SURFACES, STAIR NOSING, AND RAMP SURFACES. HANDRAILS SHALL BE AT A CONSISTENT HEIGHT ABOVE WALKING SURFACES, STAIR NOSINGS, AND RAMP SURFACES.

ADA HANDRAIL HEIGHT
NOT TO SCALE



ANSI 505.10.1 - TOP AND BOTTOM EXTENSION AT RAMPS:
RAMP HANDRAILS SHALL EXTEND HORIZONTALLY ABOVE THE LANDING FOR 12 INCHES (305 mm) MINIMUM BEYOND THE TOP AND BOTTOM OF THE RAMP RUNS. EXTENSIONS SHALL RETURN TO A WALL, GUARD, OR THE ADJACENT SURFACE, OR SHALL BE CONTINUOUS TO THE HANDRAIL OF AN ADJACENT RAMP RUN.

ADA HANDRAIL TOP AND BOTTOM
EXTENSION AT RAMPS
NOT TO SCALE

ACCESSIBLE ROUTE GENERAL NOTES:

1. AT LEAST ONE ACCESSIBLE ROUTE MUST CONNECT ACCESSIBLE BUILDING OR FACILITY ENTRANCES WITH THE REQUIRED ACCESSIBLE ENTRANCE OF EACH TYPE A AND TYPE B UNIT (IBC 1107.4).
2. ACCESSIBLE ROUTES MUST CONSIST OF ONE OR MORE OF THE FOLLOWING COMPONENTS: WALKING SURFACES WITH A RUNNING SLOPE NOT STEEPER THAN 1:20; DOORWAYS; RAMPS; CURB RAMPS EXCLUDING THE FLARED SIDES; AND ELEVATORS. PLATFORM LIFTS ARE ALLOWED IN LIMITED APPLICATIONS. STEPS AND STAIRS ARE NOT ALLOWED IN AN ACCESSIBLE ROUTE. (ANSI 402.2)

ADA COMPLIANT ACCESSIBLE
DESIGN BUILDING LAYOUT

Permit ID: 21096C-SDB-06-0001.10
Permit No. GR22-00001
Volz Project # 22649

Design By: RLH
Drawn By: RLH
Checked By: RLH

10-12-22
C12-1

THE VILLAS AT ARAGON

VETERANS MEMORIAL PARKWAY
OF FALLON, MO 63366

RYAN L. HOLMES
Professional Engineer
PE-2017018988

VOLZ
INCORPORATED
10849 Indian Head Indl. Blvd.
St. Louis, Missouri 63132
314.890.1250 Fax
www.volzinc.com
Authority #203

Lombardo
H.O.M.E.S.
4 Research Park Drive, Suite 130
St. Charles, MO 63304
Phone: (636) 265-2710