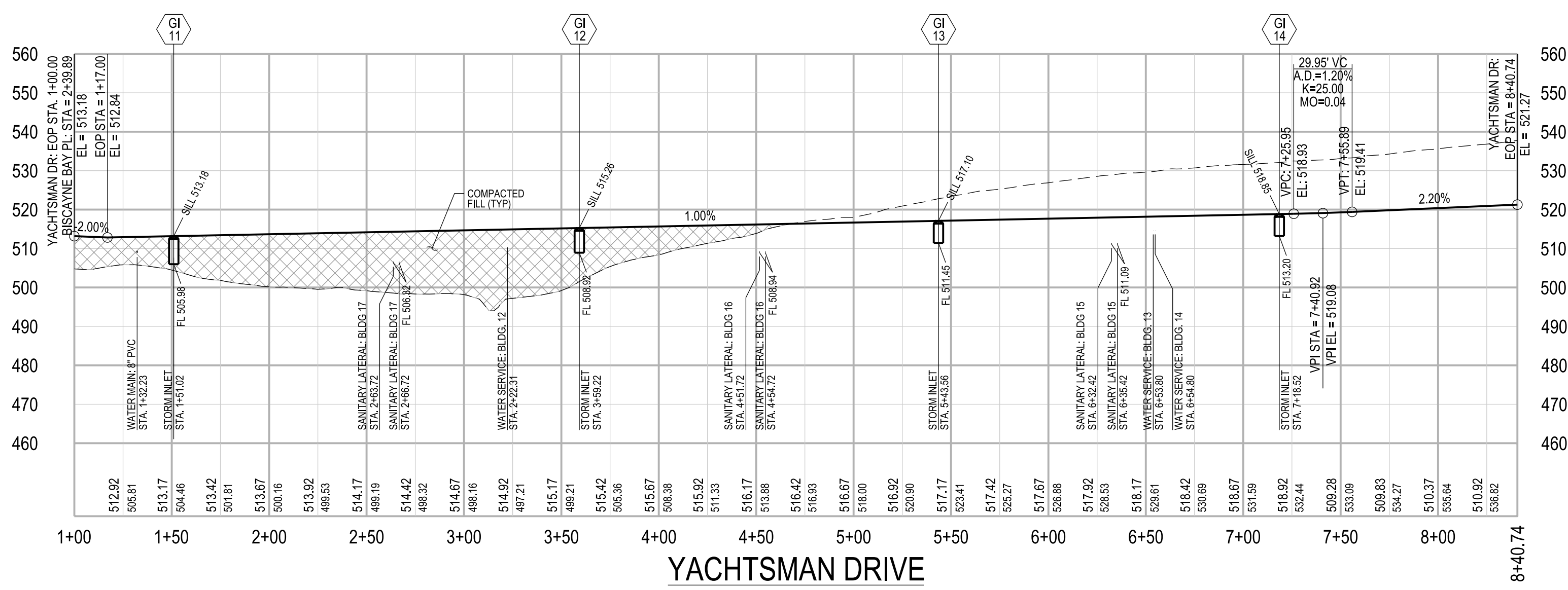
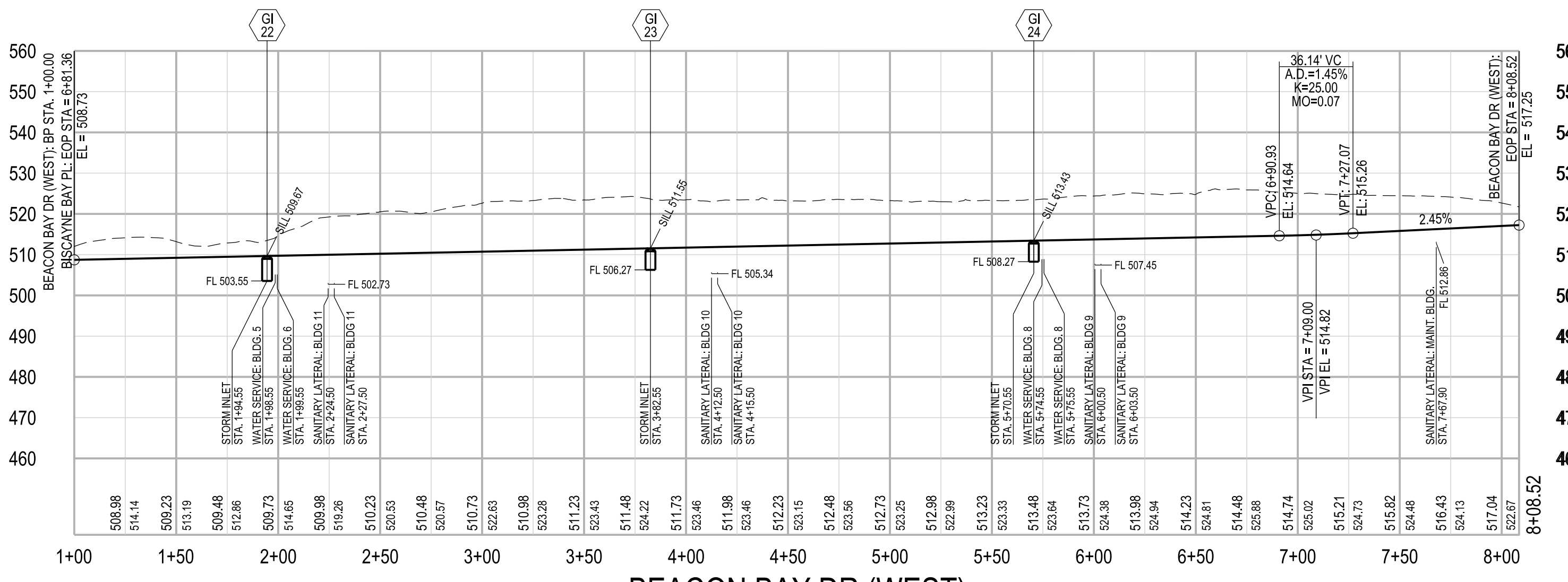


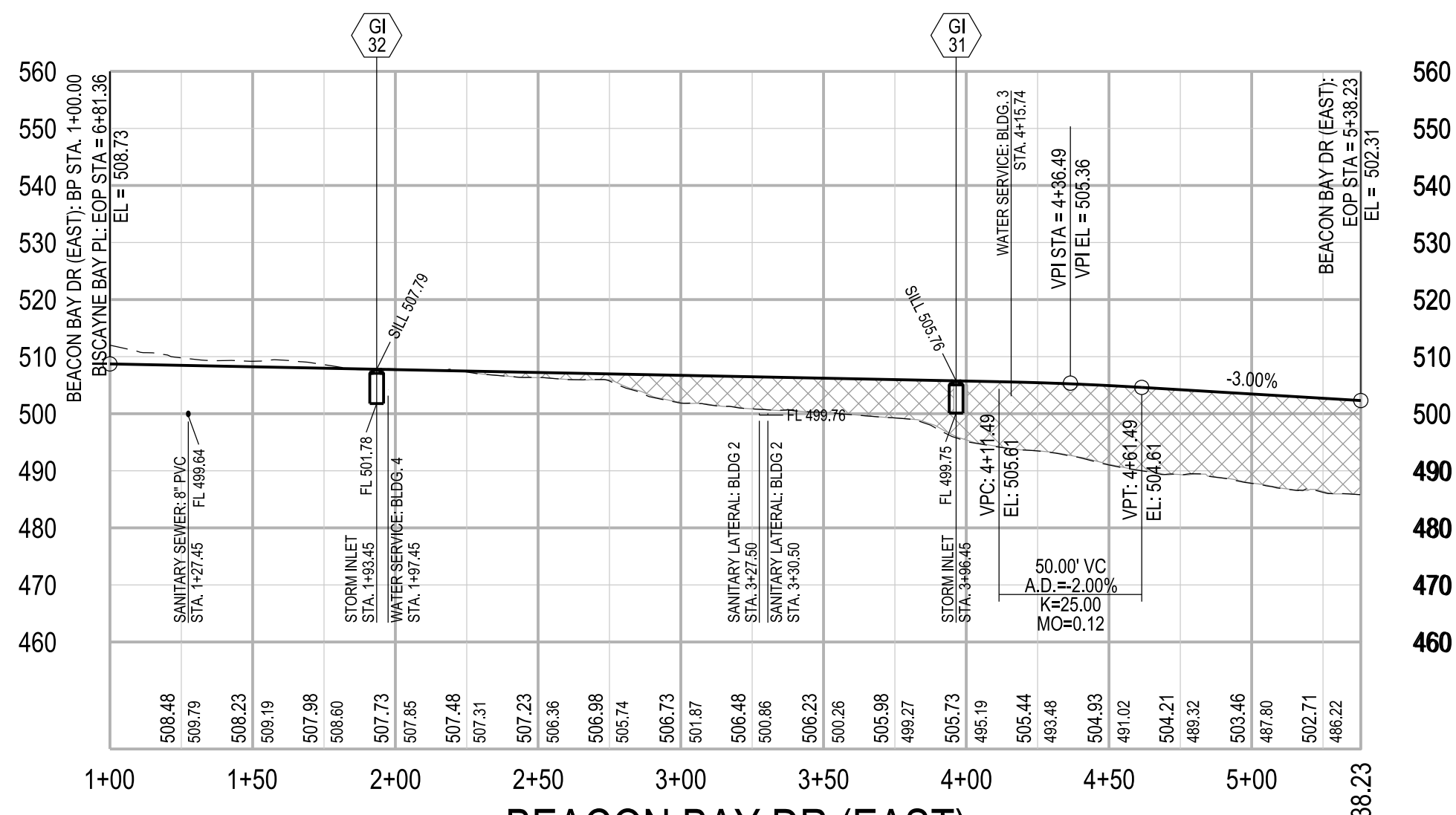
**BISCAYNE BAY PL**  
HORIZONTAL SCALE: 1" = 50'  
VERTICAL SCALE: 1" = 25'



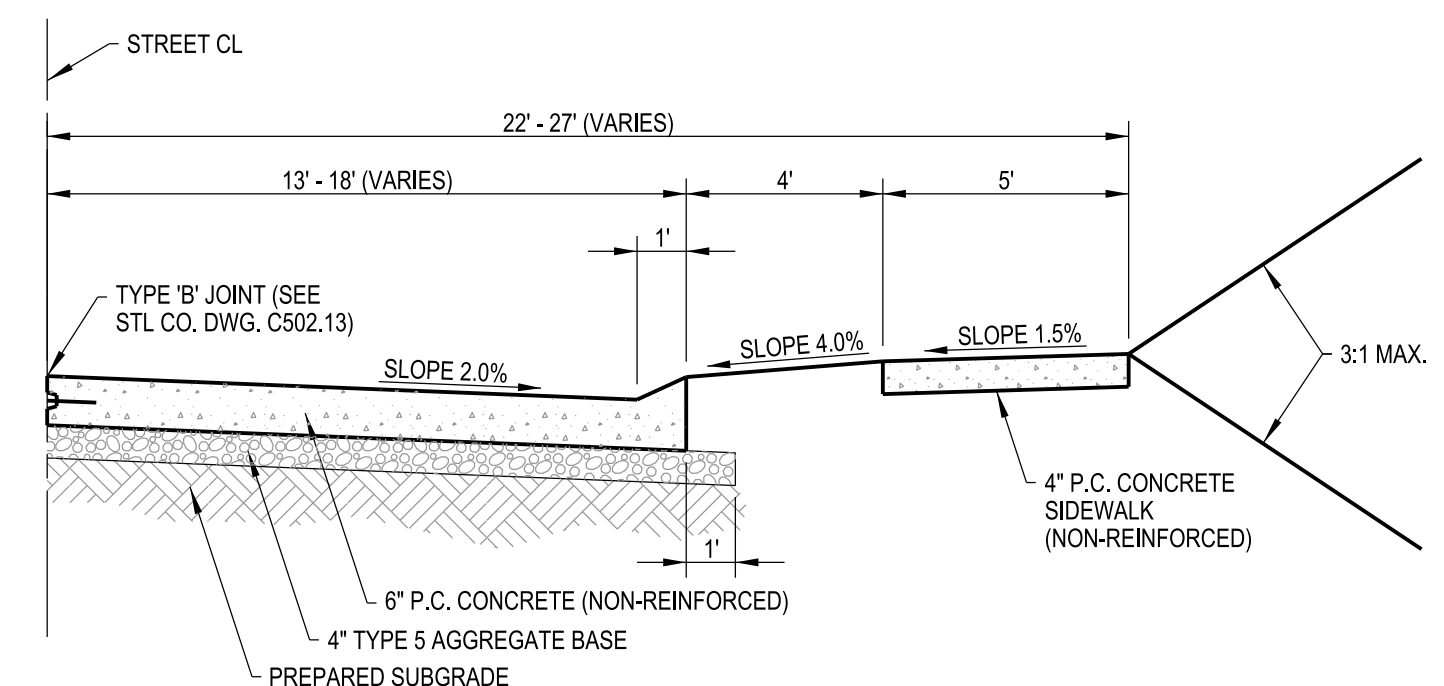
**YACHTSMAN DRIVE**  
HORIZONTAL SCALE: 1" = 50'  
VERTICAL SCALE: 1" = 25'



**BEACON BAY DR (WEST)**  
HORIZONTAL SCALE: 1" = 50'  
VERTICAL SCALE: 1" = 25'

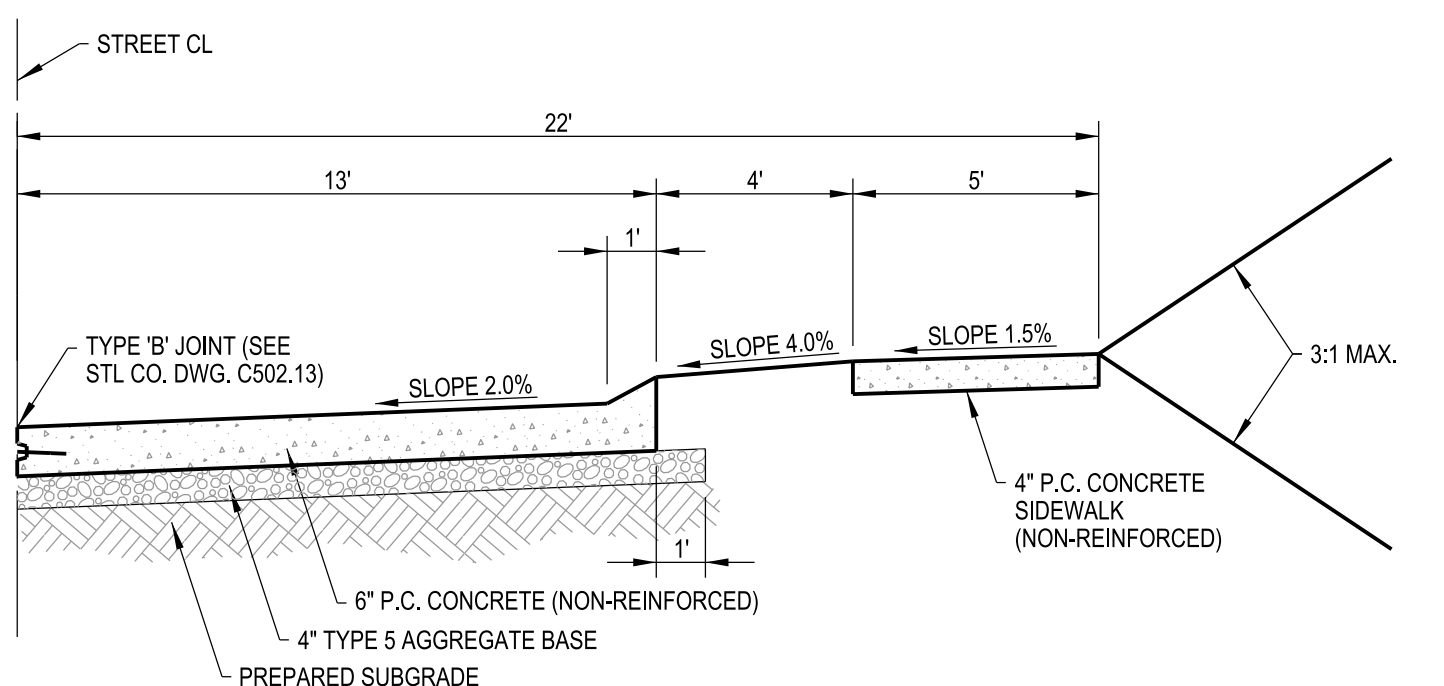


**BEACON BAY DR (EAST)**  
HORIZONTAL SCALE: 1" = 50'  
VERTICAL SCALE: 1" = 25'



**BISCAYNE BAY PL TYPICAL PAVEMENT SECTION**  
(PRIVATE: 26'-36' PVMT.)  
N.T.S.

- GENERAL NOTES**
1. TYPICAL SECTIONS SHOWN MODIFIED FROM STL CO. DWG. C203.82 TO REFLECT SITE SPECIFIC PAVEMENT SECTIONS.
  2. DO NOT SCALE DRAWINGS. FOLLOW DIMENSIONS.
  3. SECTIONS SHOWN ARE SYMMETRICAL ABOUT STREET CENTERLINE.
  4. ALL NECESSARY PAVEMENT MARKINGS SHALL BE AS REQUIRED BY ST. LOUIS COUNTY. FOR DETAILS REFER TO 'GUIDE LINES FOR PAVEMENT MARKINGS AND LANE STRIPING', STANDARD DWG. C902.10.



**YACHTSMAN DR & BEACON BAY DR TYPICAL PAVEMENT SECTION**  
(PRIVATE - 26' PVMT.)  
N.T.S.

**Lombardo**  
H · O · M · E · S  
4 Research Park Drive, Suite 130  
St. Charles, MO 63304  
Phone: (636) 265-2710

**VOLZ**  
INCORPORATED  
10849 Indian Head Indl. Blvd.  
St. Louis, Missouri 63132  
314.890.1250 Fax  
www.volzinc.com  
Aulinity #203

**RYAN L. HOLMES**  
Professional Engineer  
PE-2017018988

**THE VILLAS AT ARAGON**  
VETERANS MEMORIAL PARKWAY  
OF FALLON, MO 63366

**STREET PROFILES & PAVEMENT SECTION DETAILS**  
10-12-22  
C13

Parcel ID: 2-056C-5028-00-0001.10	Design By: R/LH
Permit No. GR22-00001	Drawn By: R/LH
Volz Project # 22649	Checked By: R/LH