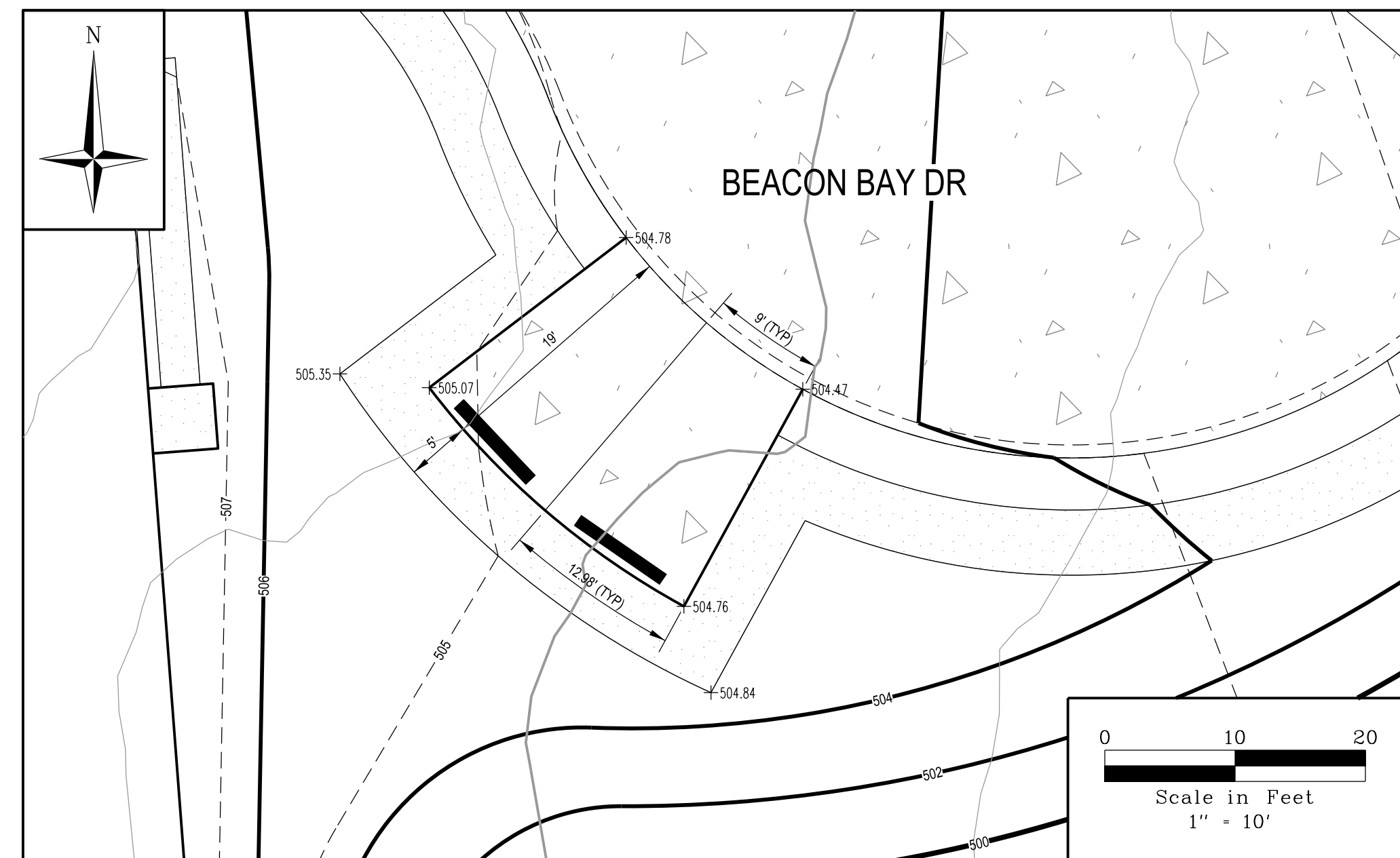
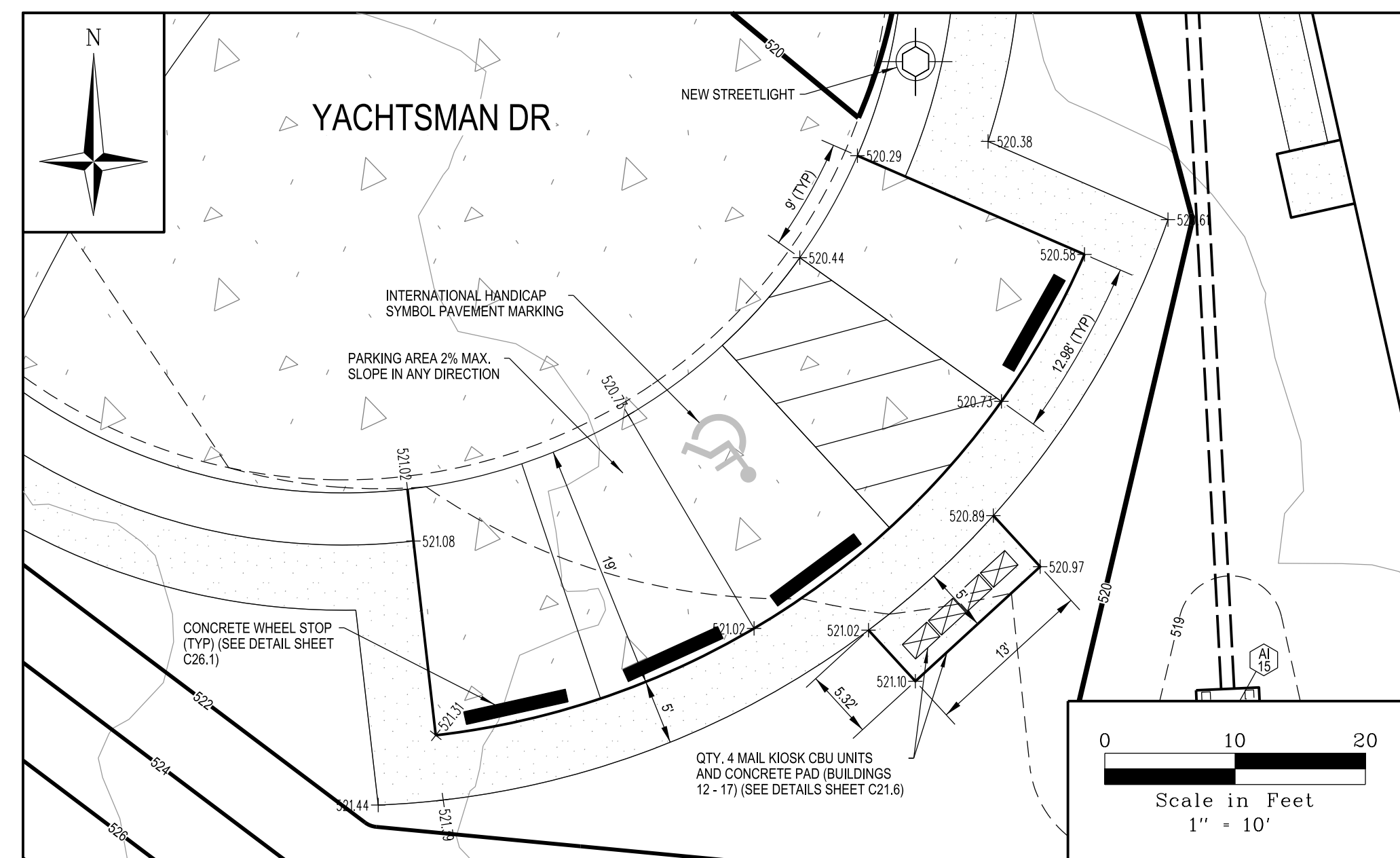


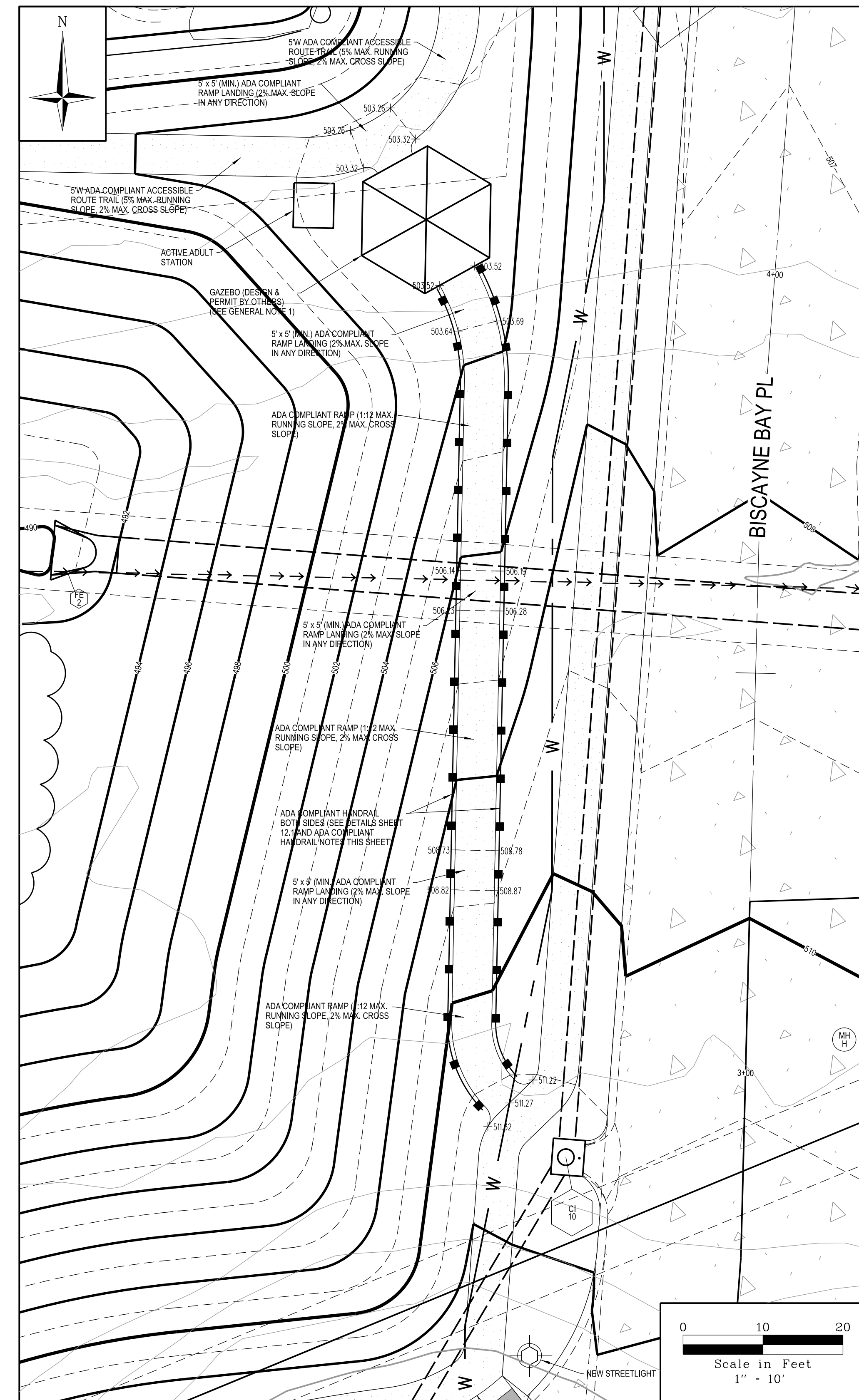
BEACON BAY DR PARKING AREA: WEST CUL-DE-SAC



BEACON BAY DR PARKING AREA: EAST CUL-DE-SAC



YACHTSMAN DR PARKING AREA



GAZEBO TRAIL DETAIL PLAN

GENERAL NOTES:

1. ANY PROPOSED PAVILIONS OR PLAYGROUND AREAS WILL NEED A SEPARATE PERMIT FROM THE BUILDING DIVISION.

ADA COMPLIANT HANDRAIL NOTES:

1. THE TOP OF HANDRAIL GRIPPING SURFACES MUST BE 34 INCHES HIGH MINIMUM AND 38 INCHES HIGH MAXIMUM ABOVE WALKING SURFACES, STAIR NOSINGS, AND RAMP SURFACES. (ANSI 505.4)
2. RAMP HANDRAILS MUST EXTEND HORIZONTALLY ABOVE THE LANDING FOR 12 INCHES MINIMUM BEYOND THE TOP AND BOTTOM OF RAMP RUNS (OR MUST BE CONTINUOUS TO THE HANDRAIL OF AN ADJACENT RAMP RUN). AFTER EXTENDING THE MINIMUM DISTANCE, EXTENSIONS MUST RETURN TO A WALL, GUARD, OR THE LANDING SURFACE. (ANSI 505.10.1)

CALL MISSOURI ONE CALL SYSTEMS INC. TWO FULL WORKING DAYS IN ADVANCE OF STARTING



WORK, MISSOURI ONE-CALL 1-800-344-7483

THE UNDERGROUND UTILITIES SHOWN HEREIN WERE PLOTTED FROM AVAILABLE INFORMATION AND DO NOT NECESSARILY REFLECT THE ACTUAL EXISTENCE, OR NON EXISTENCE, SIZE, TYPE, NUMBER, OR LOCATION OF THESE OR OTHER UTILITIES. THE GENERAL CONTRACTOR SHALL BE RESPONSIBLE FOR VERIFYING THE ACTUAL LOCATION OF ALL UNDERGROUND UTILITIES IN THE FIELD, SHOWN OR NOT SHOWN, PRIOR TO ANY GRADING, EXCAVATION, OR CONSTRUCTION OF IMPROVEMENTS. THESE PROVISIONS SHALL IN NO WAY ABSOLVE ANY PARTY FROM COMPLYING WITH THE UNDERGROUND FACILITY SAFETY AND DAMAGE PREVENTION ACT, CHAPTER 319, RSMO.

PARKING & GAZEBO TRAIL SITE PLANS

Design By: R/LH  
Drawn By: R/LH  
Checked By: R/LH  
Permit No. GR22-00001  
Vote Project # 22649

10-12-22  
C14.2

THE VILLAS AT ARAGON  
VETERANS MEMORIAL PARKWAY  
OF FALLON, MO 63366

RYAN L. HOLMES  
Professional Engineer  
PE-2017018988

VOLZ  
INCORPORATED  
10849 Indian Head Indl. Blvd.  
St. Louis, Missouri 63132  
314.860.1250 Fax  
www.volzinc.com  
Agency #203

Lombardo  
H.O.M.E.S.  
4 Research Park Drive, Suite 130  
St. Charles, MO 63034  
Phone: (636) 265-2710