

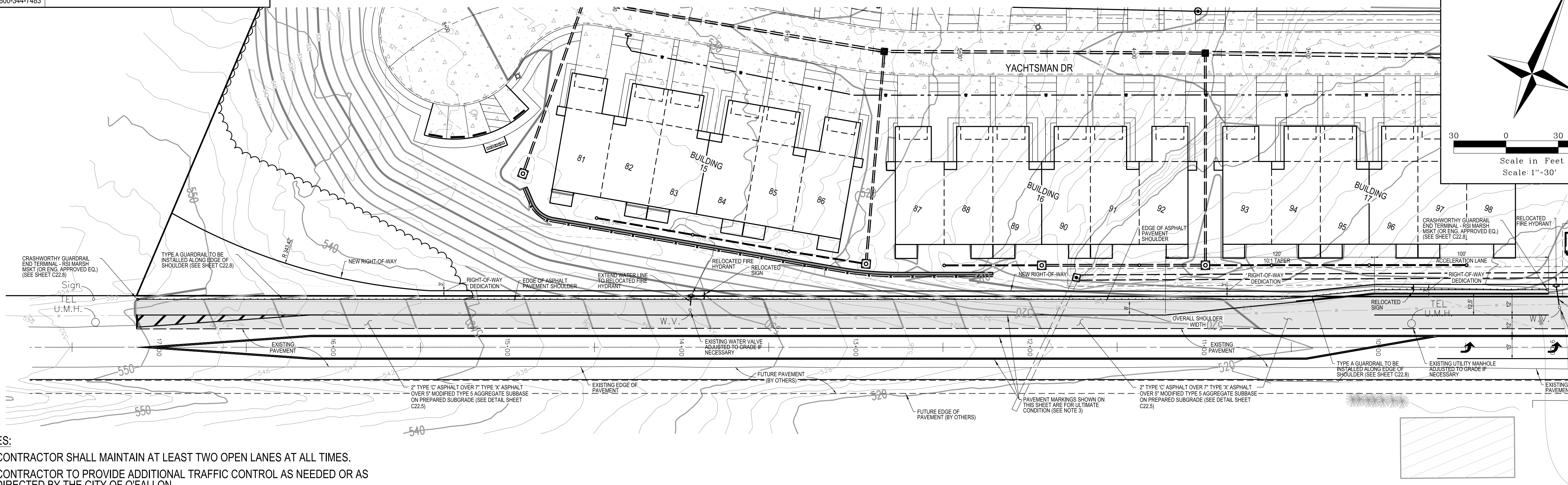
VETERANS MEMORIAL PARKWAY SITE PLAN:
STA 4+00 TO 12+00

CALL MISSOURI ONE CALL SYSTEMS INC. TWO FULL WORKING DAYS IN ADVANCE OF STARTING



WORK MISSOURI ONE-CALL 1-800-344-7483

THE UNDERGROUND UTILITIES SHOWN HEREIN WERE PLOTTED FROM AVAILABLE INFORMATION AND DO NOT NECESSARILY REFLECT THE ACTUAL EXISTENCE, OR NON EXISTENCE, SIZE, TYPE, NUMBER, OR LOCATION OF THESE OR OTHER UTILITIES. THE GENERAL CONTRACTOR SHALL BE RESPONSIBLE FOR VERIFYING THE ACTUAL LOCATION OF ALL UNDERGROUND UTILITIES IN THE FIELD SHOWN OR NOT SHOWN PRIOR TO ANY GRADING, EXCAVATION, OR CONSTRUCTION OF IMPROVEMENTS. THESE PROVISIONS SHALL IN NO WAY ABSOLVE ANY PARTY FROM COMPLYING WITH THE UNDERGROUND FACILITY SAFETY AND DAMAGE PREVENTION ACT, CHAPTER 319, RSMO.



VETERANS MEMORIAL PARKWAY SITE PLAN:
STA 9+00 TO 17+50

NOTES:

- CONTRACTOR SHALL MAINTAIN AT LEAST TWO OPEN LANES AT ALL TIMES.
- CONTRACTOR TO PROVIDE ADDITIONAL TRAFFIC CONTROL AS NEEDED OR AS DIRECTED BY THE CITY OF OFALLON.
- PAVEMENT MARKINGS SHOWN ARE FOR ULTIMATE CONDITION AND SHOULD BE COMPLETED BY OTHERS ONCE FULL WIDTH PAVEMENT WIDENING INCLUDING TO SOUTHERN HALF OF VETERANS MEMORIAL PARKWAY HAS BEEN COMPLETED BY OTHERS.

Lombardo
H.O.M.E.S.
4 Research Park Drive, Suite 130
St. Charles, MO 63304
Phone: (636) 265-2710

VOLZ
INCORPORATED
10849 Indian Head Indl. Blvd.
St. Louis, Missouri 63132
314.890.1250 Fax
www.volzinc.com
Aulinity #203

RYAN L. HOLMES
Professional Engineer
PE-2017018988

THE VILLAS AT ARAGON
VETERANS MEMORIAL PARKWAY
OFALLON, MO 63366

VETERANS MEMORIAL PARKWAY SITE PLAN
Design By: RLH
Drawn By: RLH
Checked By: RLH
Permit No. GR22-00001
Volz Project # 22649
10-12-22
C14.4